

burda style magazine 03/2010 Above-the-knee skirt

By: burda style magazine

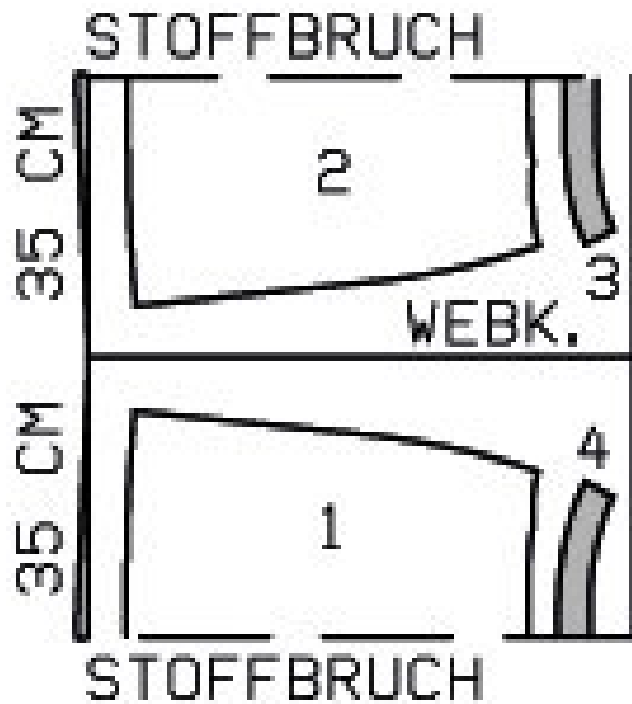
<http://www.burdastyle.com/projects/burda-style-magazine-032010-a>

Above-the-knee skirt. For more information on this and other burda style magazine patterns, please see this dedicated blog post.

Materials

MatelassÃ©

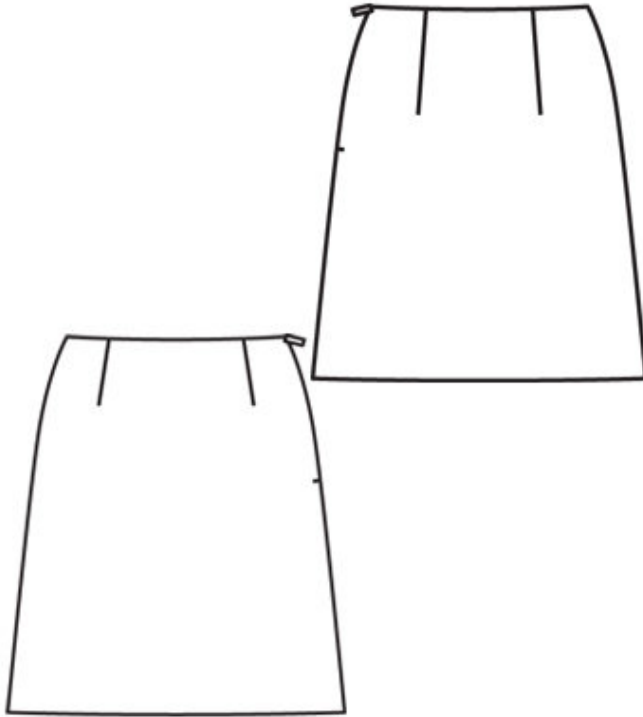
Step 1 — Preparation



105 A 34-44

Trace the pattern pieces from the pattern sheet. Follow lines and details for view A.
 Seams and edges 1.5 cm (5/8 in), hem for view A 4 cm (15/8 ins). Cut lining pieces with 1.5 cm (5/8 in) seam and hem allowances.

Step 2 — Cutting Out



Materials:

1—front skirt panel, on a fold 1x

2—back skirt panel, on a fold 1x

3—front facing, on a fold 1x

4—back facing, on a fold 1x

Lining: pieces 1 and 2.

Interfacing: Iron onto facing pieces.

Step 3 — Darts

Stitch darts and press toward centre.

Step 4 — Right side seam and zipper

Stitch right side seam. Sew invisible zip to left opening edges. Stitch left side seam from lower edge to zip. Press seam allowances open.

Step 5 — Lining

Stitch darts in lining. Stitch side seams, leaving slit open in left side seam. Stitch right side seam of facing (as mirror image of skirt). Baste facing to upper edge of skirt lining with wrong side facing right side. Stitch lower edge of facing in place.

Step 6 — Face upper edge of skirt

Place lining and facing over skirt with right sides facing, and pin to upper edge of skirt. Turn ends of facing back, 5 mm (3/16 in) before edge of opening, and pin to upper edge. Lay allowances of skirt outward and pin to upper edge of skirt, over facing. Stitch along upper edge of skirt. Turn allowances at opening edge to inside. Lay facing and lining up. Stitch facing to seam allowances, as far as possible, close to seam. Turn facing and lining to inside and sew to zip tapes.

Step 7 — Hem

Press hem allowance to inside and sew in place by hand. Hem lining so that it is about 2 cm (3/4 in) shorter than the skirt.

BurdaStyle

burda style magazine 03/2010 Above-the-knee skirt