

4/2010 Light Stretch Jacket

By: burda style magazine

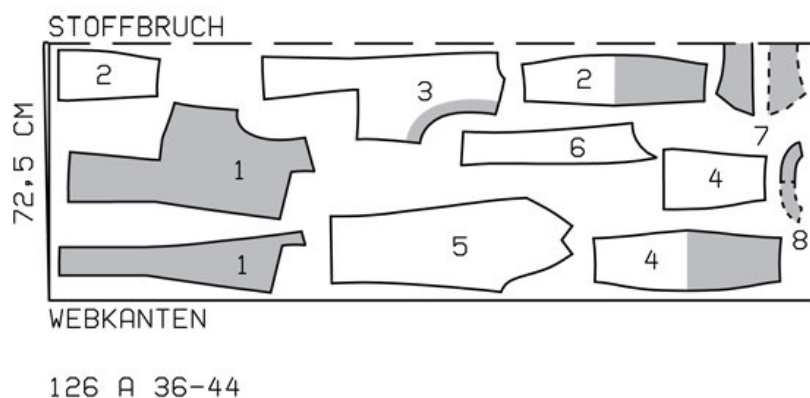
<http://www.burdastyle.com/projects/42010-light-stretch-jacket>

Light Stretch Jacket burda style magazine patterns FAQ

Materials

Crosswise stretch gabardine

Step 1 — Preparation



Trace the pattern pieces from the pattern sheet. Note different grain lines for views A and B. Trace the facing from piece 1 as a separate pattern piece. On pieces 2 and 4, trace the outer pieces from the inside -pieces, each as a separate pattern piece.

Seam and hem allowances:

Seams and edges 1.5 cm (5/8 in), hem and sleeve hems 4 cm (15/8 ins), edges of sleeve vents 4 cm (15/8 ins). Hem allowance on outer side front and back pieces is already included on the pattern pieces.

Step 2 — Cutting Out



Top fabric:

1â— front 2x

â— â— front facing 2x

2â— inside side front 2x

â— â— outside side front 2x

3â— back 2x

4â— inside side back 2x

â— â— outside side back 2x

5â— upper sleeve 2x

6â— undersleeve 2x

7â— collar, on a fold 2x

8â— back facing, on a fold 1x

Lining: piece 1 minus width of facing; piece 3 minus width of facing and at centre back with an ease pleat of about 2 cm (3/4 in); pieces 2 and 4 to fold line; and also pieces 5 and 6.

Interfacing: See pattern layout. Also interface hem allowances and allowances on edges of vents.

Step 3 — Centre back seam and darts

Stitch centre back seam. Press seam allowances open. On fronts, cut along centre of darts, about 10 cm (4 ins) long. Trim darts to a width of 1.5 cm (5/8 in). On backs, cut along centre of darts, about 5 cm (2 ins) long. Stitch side seams (seam number 1). Press seam allowances open.

Step 4 — Outside and inside side and front pieces

Stitch side seams on outside and inside side front and back pieces (seam number 2). Press seam allowances open. Lay outside and inside pieces right sides facing. Stitch side edges together from upper edges to marked fold line. Clip seam allowances toward end of seam. Turn pieces right side out and pressed seamed edges. Fold inside pieces up on fold line toward inside of jacket (right fabric sides are facing). Baste upper edges together. Hem allowance of outer pieces extend at the bottom and side seam allowances of folded piece extend at seamed edges. Stitch side front and back pieces to horizontal edges of front and back pieces (seam numbers 3 and 4). Press seam allowances up. Stitch vertical front and back section seams, not catching seamed edge of piece lying on top. Then go on to stitch darts. Press seam allowances and darts open, pressing points of darts flat.

Step 5 — Shoulder Seams

Stitch shoulder seams on jacket and facing.

Step 6 — Notched collar

Pin facing right sides together with jacket. Build a little extra fullness into corners of lapels. Stitch facing to front edges and edges of lapels, to marking. Leave facing lying right sides together with jacket for now. Stitch collar pieces together on outer edges, from seam number 6, building a little extra fullness into top collar. Begin and end stitching exactly on seam line of joining edge. Turn collar right side out. Lay collar between jacket and facing. Stitch undercollar to neck edge of jacket, from each marking to corner. Clip seam allowances of fronts into corners. Stitch lengthwise edge of undercollar piece to neck edge of jacket. Stitch top collar to facing. Clip seam allowance of facing into corners. Press seam allowances of collar joining seams open. Turn facing to inside. Pin collar joining seams together exactly. Lay back facing up and stitch seam allowances together, close to collar joining seam. Lay facing down again.

Step 7 — Pressing hem allowances

Unfold facings at hem. Press hem allowance to inside but do not yet sew in place.

Step 8 — Front sleeve seams and vents

Stitch front sleeve seams (seam number 8). Lay hem allowance and allowances on edges of vents to outside, mitring at each corner. Trim allowances of mitred seams to 5 mm (3/16 in) wide and press open. Turn hem allowance and allowances on edges of vents to inside. Stitch back sleeve seams to slit mark. Press seam allowances open. Press hem and vent edges. Sew hem and vent allowances in place by hand.

Step 9 — Darts in sleeve caps

Stitch darts in sleeve caps. Press darts open, pressing points of darts flat.

Step 10 — Sleeve caps and shoulder pads

Set in sleeves, easing sleeve caps. Sew shoulder pads in place so that they lie about 4 cm (15/8 ins) wide on sleeves.

Step 11 — Line jacket, hem

On back lining, stitch allowances of centre seam together, 1 cm (3/8 in) from edge. For the ease pleat, stitch along centre back at top and bottom, each about 5 cm (2 ins) long, and baste in between. Press pleat to one side. Stitch darts and seams of lining. Set in sleeve linings. Stitch lining to inside edges of facing, laying hem allowance of facings down. Lay lining inside jacket with wrong sides facing, pulling linings into sleeves. Lay hem allowance to inside and sew in place by hand. Turn in lining along lower edge of jacket. Press fold lightly, push upward in a shallow curve, and pin to hem allowance. Sew lining in place. Lay extra length of lining down and press lightly. Turn in lining of sleeves and sew to hem and vent allowances by hand.

BurdaStyle

4/2010 Light Stretch Jacket