

4/2010 Full skirt with tie

By: burda style magazine

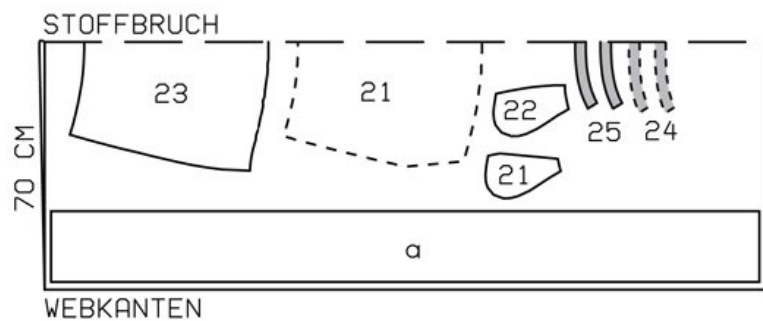
<http://www.burdastyle.com/projects/42010-full-skirt-with-tie>

Full skirt with tie burda style magazine patterns FAQ

Materials

Batiste

Step 1 — Preparation



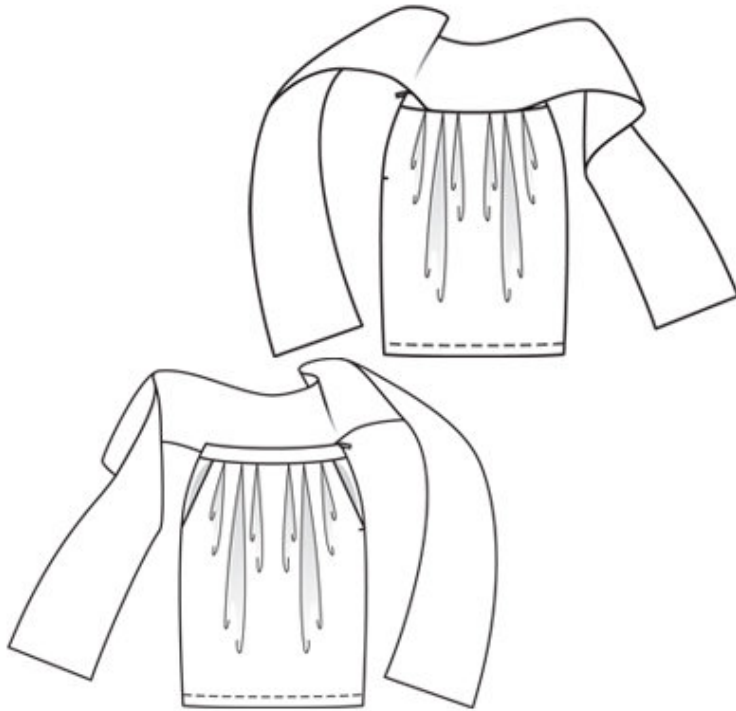
111 A 72-88

Trace the pattern pieces from the pattern sheet. Trace the pocket piece from piece 21 as a separate pattern piece.

Seam and hem allowances:

Seams and edges 1.5 cm (5/8 in), hem 3 cm (1 ins), (flare hem allowances).

Step 2 — Cutting Out



- 21—front skirt panel, on a fold 1x
- — —pocket piece 2x
- 22—side hip yoke with
- — —integrated pocket piece 2x
- 23—back skirt panel, on a fold 1x
- 24—front waistband, on a fold 2x
- 25—back waistband, on a fold 2x

a) 2 tie band pieces, 196 — 200 — 204 — 208 — 212 cm (77 — 78³/₄ — 80¹/₄ — 82 — 83¹/₂ ins) long, 20 cm (8 ins) wide.

Step 3 — Hip yoke pockets

Stitch pocket pieces to pocket opening edges of front skirt panel. Lay pocket pieces up and stitch to seam allowances, close to seam. Turn pocket pieces to inside. Pin pocket opening edges to side hip yokes at placement lines. Stitch inside edges of pocket pieces together. Baste pocket pieces to wrong side of front skirt panel.

Step 4 — Pleats

Fold pleats in skirt panels in arrow direction and baste.

Step 5 — Right side seam

Stitch right side seam. Press seam allowances open.

Step 6 — Waistband, invisible zip, left side seam

Stitch right side seam on outer waistband unit and stitch seam on inside waistband unit as mirror image. Stitch outer waistband to upper edge of skirt. Press seam allowances of joining seam onto waistband. Sew invisible zip to left opening edges and to edge of outer waistband. Stitch left side seam from lower edge to zip. Pin inside waistband unit right sides together with upper edge of outer waistband. Turn inside waistband back at edge of zip opening, about 5 mm (3/16 in) before edge, and pin to upper edge of waistband. Lay allowances of skirt at edges of opening outward and pin to upper edge of waistband, over inside waistband. Stitch along upper edge of waistband. Turn allowances at edges of opening to inside. Lay inside waistband up and stitch to seam allowances, close to seam, as far as possible. Turn inside waistband to inside and sew to zip tapes. Work from right side of skirt to stitch along line of -waistband joining seam.

Step 7 — Hem

Press hem allowance to inside and stitch 2.5 cm (1 in) from fold edge.

Step 8 — Tie band

Stitch tie band pieces right sides together, leaving an opening of 10 cm (4 ins) in centre of one long edge, for turning. Trim seam allowances. Turn tie band right side out and press edges. Sew seam opening closed. Mark centre of tie band. Pin tie band to back waistband, matching centres, so that lower edge of band meets waistband joining seam. Work from the centre to measure and mark 8 cm (3 1/4 ins) toward both sides. Edgestitch lower edge of tie band in place, between the markings.

BurdaStyle

4/2010 Full skirt with tie