

05/2011 Linen underdress Plus Size

By: burda style magazine

<http://www.burdastyle.com/projects/052011-linen-underdress-plus->



Plus Size underdress sewing pattern. 05/2011 Linen underdress burda style magazine patterns FAQ

Materials

Linen lawn

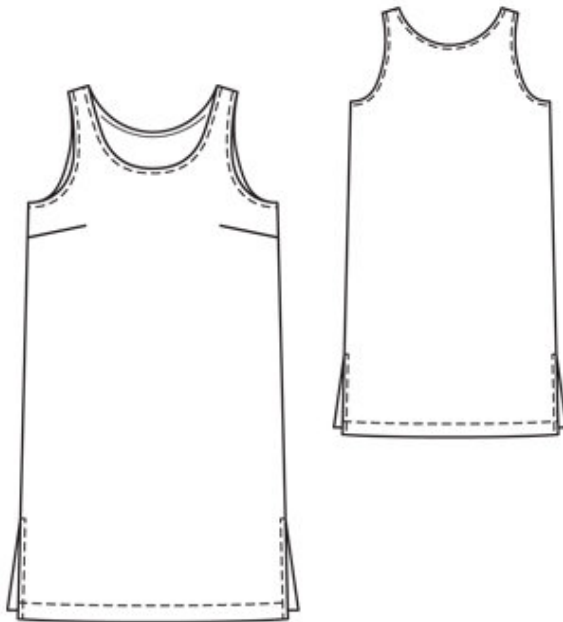
Step 1 — Preparation

Trace the pattern pieces from the pattern sheet, lengthening the \hat{A} -pieces as indicated.

Seam and hem allowances:

Seams and edges 1.5 cm (5/8 in), slit edges 2 cm (3/4 in), hem 4 cm (15/8 ins).

Step 2 — Cutting out



10â—front, on a fold 1x

11â—back, on a fold 1x

a) bias strip for neck edge, a total of 86 â— 88 â— 90 â— 92 â— 95 cm (34 â— 343/4 â— 351/2 â— 361/4 â— 371/2 ins) long, 3 cm (11/4 ins) wide (incl. allowances),

b) 2 bias strips for armholes, each a total of 55 â— 56 â— 58 â— 60 â— 62 cm (213/4 â— 221/4 â— 23 â— 233/4 â— 241/2 ins) long, 3 cm (11/4 ins) wide (incl. allow \hat{A} -ances).

Step 3 — Shoulder seam

Stitch right shoulder seam. Trim seam allowances to 7 mm (1/4 in) wide, neaten together, and press down

Step 4 — Neck edge

Fold bias strip for neck edge lengthwise and press, right side facing out. Pin folded bias strip to neck edge so that fold edge of strip lies on garment piece, 1 cm (3/8 in) past seam line. Stitch along neck edge. Trim seam allowances and clip curves several times. Turn bias strip to inside and press edge.

Step 5 — Bias strip

Stitch left shoulder seam, turning bias strip out flat again to stitch ends of strip together. Turn bias strip to inside again. Topstitch 7 mm (1/4 in) from neck edge.

Step 6 — Neck edge

Face edges of armholes with bias strips as for neck edge.

Step 7 — Armholes

At armhole edges, turn bias strips up again. Stitch side seams above slit marks, also stitching ends of bias strips together. Press seam allowances open and press allowances on edges of slits to inside. Turn bias strips to inside again. Topstitch armholes close to edges. At slit edges, turn edges of allowances under. Stitch 1 cm(3/8 in) from slit edges and stitch horizontally across tops of slits.

Step 8 — Hem Allowance

Turn in hem allowance. Stitch hem in place, 3 cm (1 1/4 ins) from lower edge

BurdaStyle

05/2011 Linen underdress Plus Size