

10/2010 Long sleeve dress with belt

By: burda style magazine

<http://www.burdastyle.com/projects/102010-long-sleeve-dress-with>



Long sleeve dress with belt burda style magazine patterns FAQ

Materials

stretch crÃªpe

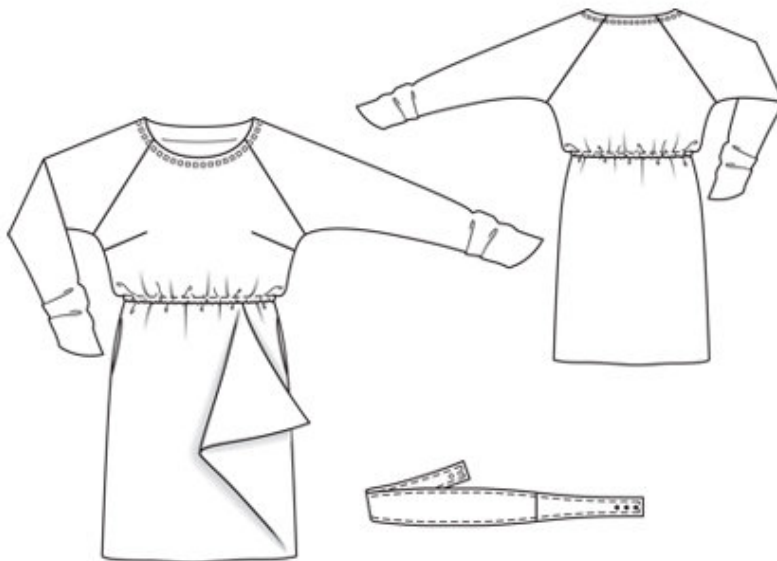
Step 1 — Preparation

Trace the pattern pieces from the pattern sheet. Glue pieces 4 and 4a together on joining lines. Lengthen piece 5 as indicated. Trace the pocket pieces from piece 4 as separate pattern pieces — they are the same for all sizes. Cut piece 8 apart on the marked seam line = front and back belt pieces.

Seam and hem allowances:

Seams and edges 1.5 cm (5/8 in), lower front and back edge 2 cm (3/4 in), upper edge of skirt pieces 2 cm (3/4 in), hem and sleeve hems 3 cm (1 1/4 ins).

Step 2 — Cutting out



Dress

CrÃ³pe:

1â—front, on a fold 1x

2â—back, on a fold 1x

3â—sleeve 2x

4â—skirt front 1x

â— â—pocket piece, each 1x

5â—skirt back, on a fold 1x

6â—front neck facing, on a fold 1x

7â—back neck facing, on a fold 1x

Lining: pocket piece (piece 4).

Interfacing: Iron onto facing pieces.

Belt

Nappa leather:

8â— front belt piece, on a fold 2x

â— â— back belt piece 4x

Step 3 — Bust Darts

Stitch bust darts and press down.

Step 4 — Sleeves and sides

Stitch sleeves to front and back (seam numbers 2 and 1). Press seam allowances open. Stitch side seams and sleeve seams of dress bodice as continuous seams.

Step 5 — Sleeves

Press sleeve hem allowances to inside and sew in place by hand. Fold pleats in sleeves in arrow direction and sew in place along line of sleeve seam.

Step 6 — Shoulders

Stitch shoulder seams of neck facing. Stitch facing right sides together with neck edge. Trim seam allowances. Lay facing up and stitch to \hat{A} -seam allowances, close to seam. Turn facing to inside and sew to sleeve attachment seams.

Step 7 — Front skirt

Fold front skirt panel on fold line, right side facing in. Stitch upper edges together from fold to marking. Trim seam allowances and clip at marking. Turn point right side out. Stitch skirt side seams, but do not stitch across pocket openings.

Step 8 — In-seam pockets

Pin pocket pieces right sides together with seam allowances of pocket openings \hat{A} — pocket lining pieces in front and pocket pieces of main fabric in back. Stitch pocket pieces in place along marked seam lines, stitching close to seam above pocket opening edges. Press pocket pieces forward and stitch together. Baste upper edges of pocket pieces to upper edge of skirt.

Step 9 — Dress bodice

Stitch skirt to dress bodice. Press seam allowances up and stitch as marked, to form elastic casing. Leave a section of seam open for elastic. Pull elastic into casing. Sew ends of elastic together for a circumference of 82 \hat{A} — 86 \hat{A} — 92 \hat{A} — 98 \hat{A} — 104 cm (32 1/2 \hat{A} — 34 \hat{A} — 36 1/4 \hat{A} — 38 3/4 \hat{A} — 41 ins). Sew seam opening close

Step 10 — Hem allowance

Press hem allowance to inside and sew in place by hand.

Step 11 — Gems

Sew gems to dress, along neck edge, 1 cm (3/8 in) from edge and spaced about 1 cm (3/8 in) apart.

Step 12 — Belt

Stitch seams of belt pieces. Spread seam allowances open and glue down. First iron leather interfacing to wrong leather side of outer belt piece. Cut pelment interfacing with seam allowances and iron on outer belt piece, over leather interfacing. Important: First test-iron a piece of interfacing on a scrap of leather. For better results, it may be necessary to glue the pelment interfacing on with a glue stick instead of ironing.

Step 13 — Belt

Fold seam allowances of outer belt unit to inside, over edges of interfacing, and glue in place. Lay outer belt unit on inside unit, with wrong sides facing. Topstitch close to edges and again 7 mm (1/4 in) from edges. Trim allowances. Insert two upper snap halves in right end of belt as marked. Insert lower snap halves in left end of belt as marked. To adjust belt length, insert a third lower snap half, with the same spacing.

BurdaStyle

10/2010 Long sleeve dress with belt