

# Dress Pants (Plus Size) 04/2012

By: burda style magazine

<http://www.burdastyle.com/projects/dress-pants-plus-size-042012>

---



Dress pants sewing pattern. These pants are flattering and stylish and go perfectly with our suit jacket #134 for a full suit!

## Materials

Crepe, width: 150 cm (59 ins) length: Size 44 – 50: 2.00 m (2 1/4 yds) 2.15 m (2 1/2 yds). Vilene/ Pellon G 785. Vilene Bias Tape/stay tape. 1 zip, 10 cm (4 ins) long. 1 button. Note: To make both jacket, style 133, and trousers, style 134 A, you will need: Size 44 – 46: 4.30 m (4 3/4 yds) Size 48 – 50: 4.60 m (5 1/8 yds)

Size 52: 4.75 m ( 5 1/4 yds) of 150 cm wide outer fabric and Size 46 – 50: 1.85 m (2 1/8 yds), Size 50 – 52: 2.05 m (2 1/4 yds) of 140 cm wide lining fabric.

---

## Step 1 — Preparations



Paper cut for ANSI A (German DIN A4) prints:

This pattern is printed on 8.5 × 11 sheets of plain paper. Do not scale or center pages before printing. Wait until all sheets are printed out before beginning to tape them together. **Do not cut out pattern pieces yet**— Arrange the sheets on a large, hard, flat surface so that they fit together, matching up like numbers and letters (i.e. 6A to 6A). To tape pattern together, fold under the margin of one piece (6A) and tape right against the line of it's matching number/letter (6A).

Trace the pattern pieces from the pattern sheet following the lines and markings for the correct size.

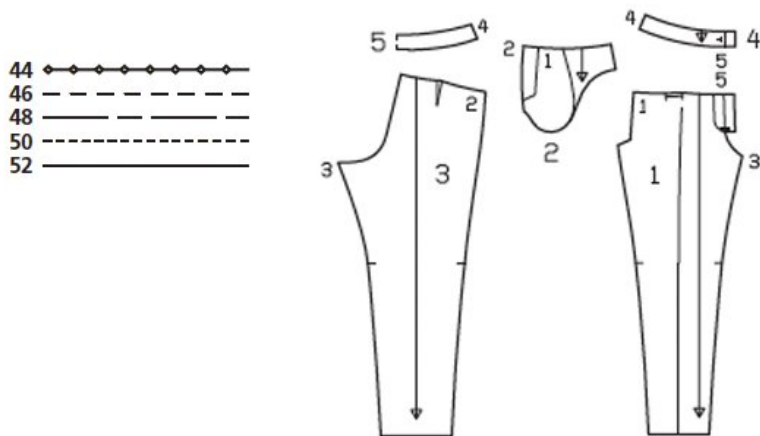
On piece 2, trace the marked pocket piece up to the abutting line.

**burda style magazine pattern do not have seam allowance included.**

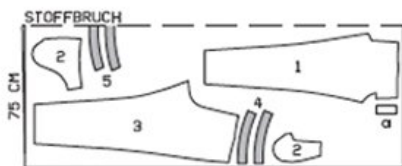
Seam and hem allowances to be added: Seams and edges 1.5 cm (5/8 in), hem 4 cm (1 5/8 ins).

---

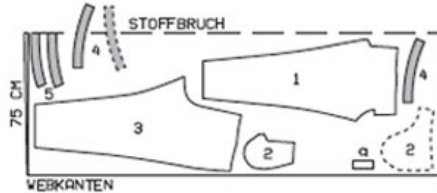
## Step 2 — Cutting out



Crepe, 150cm width  
Sz, 44-50



Sz. 52



stoffbruch = fabric fold  
webkanten = selvage

- 1 front trouser piece 2x
- 2 side hip yoke with integrated pocket piece 2x
- pocket piece 2x
- 3 back trouser piece 2x
- 4 front waistband 4x
- 5 back waistband, on a fold 2x

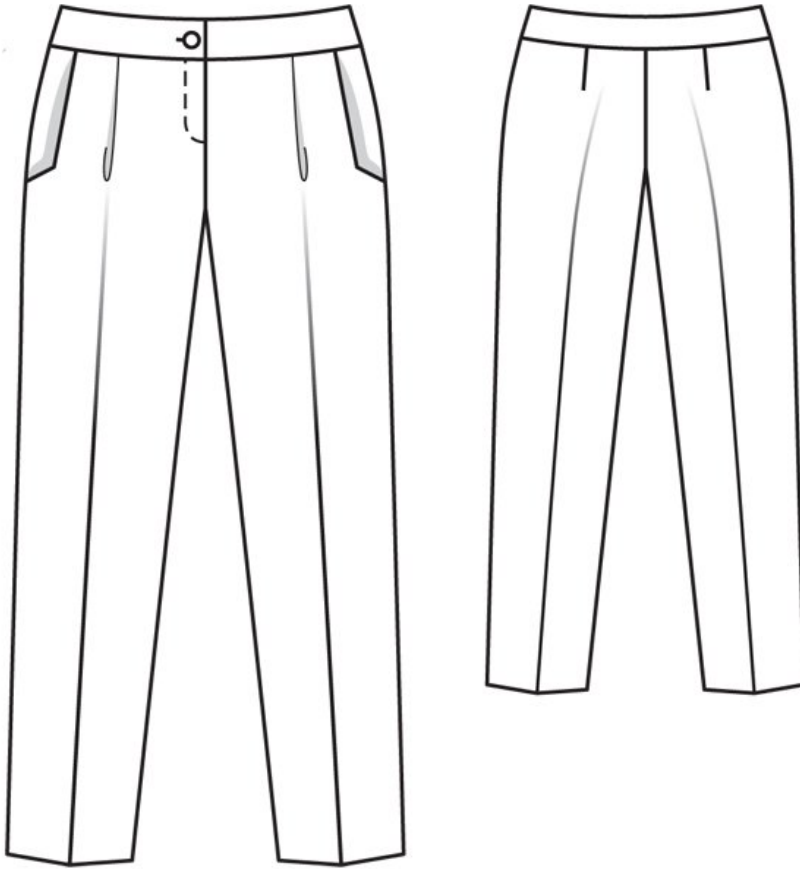
Also draft and cut the following piece:

- a) left underlap piece, 11 cm (4 3/8 ins) long, 5 cm (2 ins) wide, finished width 2.5 cm (1 in).

Interfacing: Cut interfacing and iron on to the waistband pieces. Iron Vilene Bias Tape/stay tape to pocket opening edge of front trouser pieces.

---

## Step 3 — Sewing



Fold front trouser pieces length wise, with wrong side facing in, and press creases. Fold pleats in direction of arrow and baste.

Stitch back darts and press toward centre.

Hip yoke pockets: Stitch pocket pieces right sides together with pocket opening edges of front trouser pieces. Clip seam allowances at corner. Turn pocket pieces to the side/up and stitch to seam allowances, close to seam. Turn pocket pieces to inside. Press edges. Pin pocket opening edges to side hip yokes at abutting lines. Stitch edges of pocket pieces together. Baste pocket pieces to wrong side of front trouser pieces, first trimming away allowance of right pocket piece along centre front.

Stitch side seams and inside leg seams. Stitch centre front seam from slit mark to inside leg seam.

Zip opening: Press self-facings on slit edges to inside along centre front on the right and 5 mm (3/16 in) before centre front on the left. Stitch zip under left slit edge (underlap), stitching close to teeth of zip. Pin slit closed matching centre fronts. Stitch loose zip tape to right facing, not catching trouser piece. Baste facing in place. Topstitch slit from upper edge to 2 cm (3/4 in) before the end as marked. Fold underlap piece length wise and stitch across lower end. Turn right side out. Lay underlap under left opening edge, and pin to facing. Stitch facing to underlap, close to zip joining seam. Lay slit closed again and topstitch to the end, catching underlap.

Stitch centre back seam.

Waistband: Stitch side seams on waistband units. Stitch outer waistband to upper trousers edge, with right waistband end extending from centre front and stitching left waistband end to underlap. Press seam allowances onto waistband. Lay inside waistband unit right sides together with attached waistband unit. Stitch waistband across ends and along upper edge, stitching along centre front at right waistband end. Trim seam allowances, trimming corners diagonally. Turn waistband right side out. Turn inside waistband edge under, approx. 4 cm (1 5/8 ins) long and baste, then lay remaining edge flat over joining seam. Work from right side of garment to stitch along line of joining seam, catching inside waistband edge. Work buttonhole in right waistband end as marked.

Press hem allowances to inside and sew in place by hand.

Press creases in back trouser pieces. Repress creases in hem edge.

---

**BurdaStyle**

Dress Pants (Plus Size) 04/2012