

02/2011 Short coat

By: burda style magazine

<http://www.burdastyle.com/projects/022011-short-coat>



Short coat burda style magazine patterns FAQ

Materials

eyelet/broderie anglaise

Step 1 — Preparation

| Größen, Tailles, Sizes | | | | | | 2 | | 3 | | 4 | | |
|------------------------|-------------|------|-------------|------|-------------|------|--|-----|---|-----|---|-----|
| 1 | N | | L | | K | | Oberweite Tour de poitrine Bust | | Tailleweite Tour des taille Waist | | Hüftweite Tour des hanches Hip | |
| | 5'6" 168 cm | | 5'9" 176 cm | | 5'3" 160 cm | | ins | cm | ins | cm | ins | cm |
| | US | Eur. | US | Eur. | US | Eur. | | | | | | |
| | 6 | 32 | 6 | 64 | 6 | 16 | 30 | 76 | 23 | 58 | 32 ½ | 82 |
| | 8 | 34 | 8 | 68 | 8 | 17 | 31 ½ | 80 | 24 ½ | 62 | 34 | 86 |
| | 10 | 36 | 10 | 72 | 10 | 18 | 33 | 84 | 26 | 66 | 35 ½ | 90 |
| | 12 | 38 | 12 | 76 | 12 | 19 | 34 ¾ | 88 | 27 ¾ | 70 | 37 | 94 |
| | 14 | 40 | 14 | 80 | 14 | 20 | 36 ¾ | 92 | 29 ¾ | 74 | 38 ¾ | 98 |
| | 16 | 42 | 16 | 84 | 16 | 21 | 37 ¾ | 96 | 30 ¾ | 78 | 40 ¾ | 102 |
| | 18 | 44 | 18 | 88 | 18 | 22 | 39 ½ | 100 | 32 ½ | 82 | 41 ¾ | 106 |
| | 20 | 46 | 20 | 92 | 20 | 23 | 41 | 104 | 34 | 86 | 43 ½ | 110 |
| | 22 | 48 | 22 | 96 | 22 | 24 | 43 ½ | 110 | 36 ¾ | 92 | 45 ¾ | 116 |
| | 24 | 50 | 24 | 100 | 24 | 25 | 45 ¾ | 116 | 38 ¾ | 98 | 48 | 122 |
| | 26 | 52 | 26 | 104 | 26 | 26 | 48 | 122 | 41 | 104 | 50 ¾ | 128 |
| | 28 | 54 | 28 | 108 | 28 | 27 | 50 ½ | 128 | 43 ½ | 110 | 52 ¾ | 134 |
| | 30 | 56 | 30 | 112 | 30 | 28 | 52 ¾ | 134 | 45 ¾ | 116 | 55 ¾ | 140 |
| | 32 | 58 | 32 | 116 | 32 | 29 | 55 ¾ | 140 | 48 | 122 | 57 ¾ | 146 |
| | 34 | 60 | 34 | 120 | 34 | 30 | 57 ¾ | 146 | 50 ¾ | 128 | 60 | 152 |

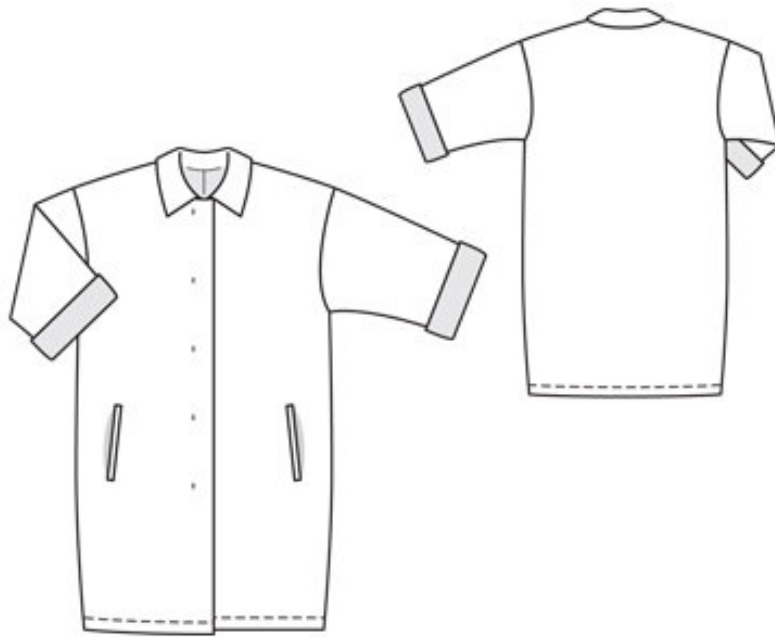
Trace the pattern pieces from the pattern sheet. Follow lines and details for style 112 A. Trace the pocket piece from piece 1 as a separate pattern piece.

The buttonholes on piece 1 are marked for size 72. For sizes 76 — 88, mark the top buttonhole the same distance from neck edge as for size 72. The bottom buttonhole is in the same place for all sizes. Space the other buttonholes evenly in between.

Seam and hem allowances:

Seams and edges 1.5 cm (5/8 in), hem 4 cm (15/8 ins), lining 4 cm (15/8 ins). Flare hem allowances.

Step 2 — Cutting out



Eyelet fabric/ broderie anglaise:

1â— front 2x

â— â— pocket piece 2x

2â— back, on a fold 1x

3â— sleeve 2x

4â— top collar, on a fold 1x

a) 2 welt strips, 18 cm (7 ins) long, 4 cm (15/8 ins) wide (incl. allowance).

Cotton satin print:

1â— front 2x

2â— back, on a fold 1x

3â— sleeve 2x

4â— undercollar, on a fold 1x

Lining: pocket piece to welt joining line, twice.

Interfacing: See pattern layout. Iron interfacing to top collar and undercollar pieces. Iron strips of interfacing, about 3 cm (1 1/4 ins) wide, to wrong side of fabric, over pocket marking.

Step 3 — Single welt pockets

Sew single welt pockets on fronts: Mark an abutting line for each welt, 7 mm (1/4 in) from welt joining line (= finished width of welt). Fold welt strips lengthwise, right side facing out, and press. Baste folded welt strips in place, at each welt joining line, so that fold edge of welt meets abutting line and open long edges lie between pocket lines. Stitch welts in place along welt joining lines. Stitch fabric pocket pieces in place along pocket piece joining lines. Slash between lines of stitching and clip diagonally toward ends of seams, not catching welts or pocket pieces. Lay welts into pocket openings and pull pocket pieces to inside. Stitch

pocket lining pieces to seam allowances of welt joining seams. Fold small triangles at pocket opening ends to inside and stitch to welts and pocket pieces, from seam end to seam end. Trim pocket pieces even and stitch together.

Step 4 — Shoulder seams

Stitch shoulder seams. Stitch each sleeve to armhole edge. Press seam allowances of sleeve joining seams away from sleeves. Stitch side seams and sleeve seams as continuous seams. Press seam allowances open.

Step 5 — Collar

Stitch collar pieces right sides together along outer edges, from seam number 5. Trim seam allowances. Turn collar right side out and press. Baste edges of collar together to neck edge.

Step 6 — Shoulders and lining

Stitch shoulder seams of lining. Stitch sleeve linings to armhole edges. Stitch side seams and sleeve seams. Work buttonholes in right front lining piece as marked, first ironing small pieces of interfacing to wrong side, for reinforcement, as marked.

Step 7 — Lining

Pin lining right sides together with coat. Stitch along front and neck edges, catching collar. Trim allowances, trimming corners diagonally. Turn lining to inside, pulling linings into sleeves. Turn in lower edges of sleeves and sleeve linings at the seam and hold with a single straight pin. Reach between outer fabric and lining at edge of hem to first pull out one sleeve. Remove the pin but keep hold of the edges. Stitch lower edges of sleeve and lining right sides together. Push sleeve back in again. —Stitch lining of other sleeve in same manner. Turn up lower edges of sleeves.

Step 8 — Hem and buttons

At front edges, press seams open, from the bottom up about 10 cm (4 ins) long. Press hem allowances of coat and lining to inside, individually, turn in to a width of 3 cm (1¼ ins), and stitch. Attach hem of lining to coat hem with a small thread bar at each seam. Machine stitch vertical thread bars, about 1 cm (3/8 in) long, behind buttonholes, 6 cm (23/8 ins) from right front edge. Pin right front to left front, matching centre fronts. Sew buttons in place, to match button—holes.

BurdaStyle

02/2011 Short coat