

burda style magazine 03/2010 Blouson Jacket

By: burda style magazine

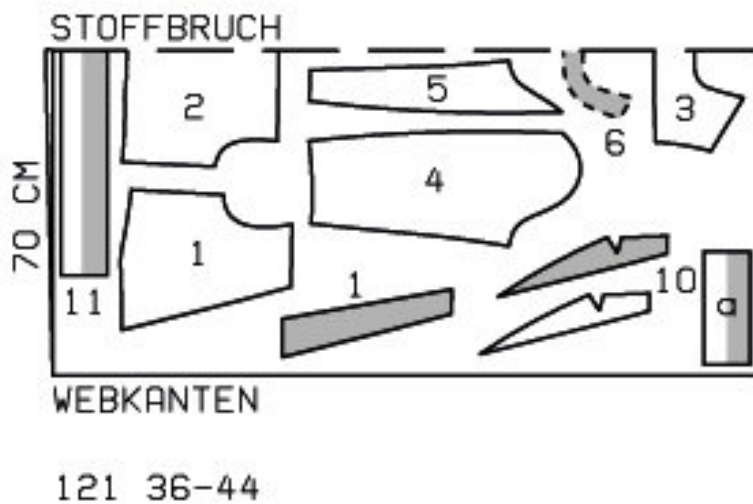
<http://www.burdastyle.com/projects/burda-style-magazine-032010-1>

Blouson Jacket. For more information on this and other burda style magazine patterns, please see this dedicated blog post.

Materials

Cotton gabardine with crosswise stretch

Step 1 — Preparation



Trace pattern pieces from the pattern sheet. Follow lines and details for style 121. Trace front facing from piece 1 as a separate pattern piece.

Seam and hem allowances:

Seams and edges 1.5 cm (5/8 in).

Step 2 — Cutting Out



- 1 — front 2x
- 2 — front facing 2x
- 3 — back, on a fold 1x
- 4 — yoke, on a fold 1x
- 5 — front sleeve 2x
- 6 — back sleeve 2x
- 7 — neck facing, on a fold 1x
- 8 — lapel 4x
- 9 — hem band, on a fold 1x

a) 2 cuffs with 2.5 cm (1 in) underlap, 24 — 24.5 — 25 — 25.5 — 26 cm (9 1/2 — 9 3/4 — 9 7/8 — 10 — 10 1/4 ins) long, 10 cm (4 ins) wide, finished width 5 cm (2 ins).

Interfacing: See pattern layout. Interface top lapel pieces and also outer halves of hem band and cuffs.

Step 3 — Darts

Stitch front and back darts. Press darts toward centre

Step 4 — Lapels

For the each lapel, lay one top piece on one underneath piece, right sides facing. Stitch outer edges together, stitching across the seam allowances of the joining edge exactly at the bottom point. Leave narrow upper

edge and joining edge open. Trim seam allowances. Trim corners diagonally and clip into inside corners. Turn lapels right side out and press edges. Baste joining edges of lapels together to fronts (seam number 1). Baste upper narrow edge in place.

Step 5 — Yoke

Stitch yoke to fronts and to back. Press seam allowances onto yoke.

Step 6 — Side Seams and Front Facings

Stitch side seams. Stitch front facings to neck facing. Press seam allowances open.

Step 7 — Facings

Pin facing right sides together with jacket. Stitch along front edges and neck edge. Trim seam allowances. Lay facing forward and stitch to seam allowances, close to joining seam. Turn facing to inside. Press edges. Baste lower edges of facing in place. Sew inside edge of facing to seams.

Step 8 — Back Sleeve Seams and Vents

Stitch back sleeve seams to vent mark. Press seam allowances open. Press allowances at edges of vent to inside. Topstitch edges of sleeve vents 7 mm (1/4 in) wide, stitching across top end of vents. Stitch underneath sleeve seams.

Step 9 — Cuffs

Construct cuffs and stitch to lower edges of sleeves.

Step 10 — Setting in sleeves

Set in sleeves, easing sleeve caps. Sew shoulder pads in place.

Step 11 — Hem Band

Stitch hem band to lower edge of jacket. Press seam allowances of joining seam and on other long edge of hem band onto hem band. Fold hem band lengthwise. Stitch ends closed. Turn hem band right side out. Baste inside edge in place. Work from right side of garment to stitch inside edge along line of joining seam.

Step 12 — Button and Buttonhole

Work a buttonhole for inside button in left end of hem band. Sew button to inside of hem band. Fasten hem band with two hooks and eyes. Fasten cuffs with one hook and eye each. Sew each hook in place, 1.5 cm (5/8 in) behind edge of overlap, not exiting needle on right side of fabric.

BurdaStyle