

# 5/2011 Long-sleeved Dress with Zipper Detail

By: burda style magazine

<http://www.burdastyle.com/projects/52011-long-sleeved-dress-with>

---



Long-sleeved Dress with Zipper Detail burda style magazine patterns FAQ

## Materials

Duchesse

---

## Step 1 — Preparation

Trace the pattern pieces from the pattern sheet.

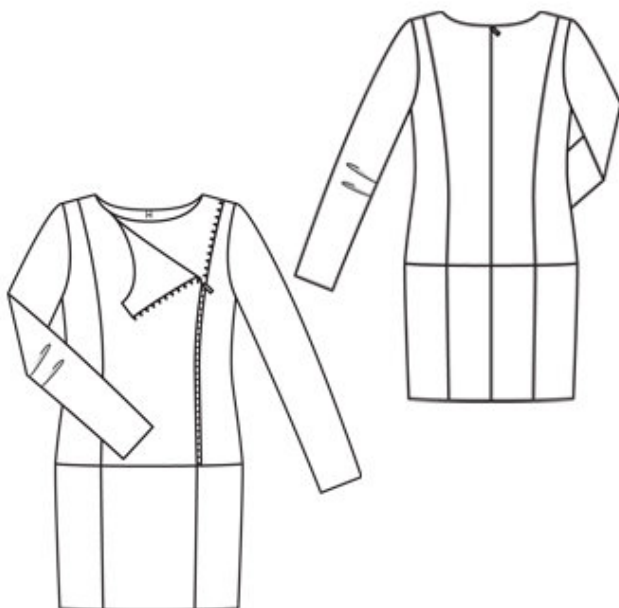
The pleat arrows on piece 31 are marked for size 36. For the other sizes, mark the pleat arrows according to the size lines.

Seam and hem allowances:

Seams and edges 1.5 cm (5/8 in), hem and sleeve hems 4 cm (15/8 ins) (flare sleeve hem allowance).

---

## Step 2 — Cutting Out



21â—upper centre front, on a fold 3x

22â—upper side front 2x

23â—upper centre back 2x

24â—upper side back 2x

25â—lower centre front, on a fold 1x

26â—lower side front 2x

27â—lower centre back 2x

28â—lower side back 2x

29â—front neck facing, on a fold 1x

30â—back neck facing 2x

31â—sleeve 2x

Interfacing: See pattern layout. Iron Vilene Bias Tape/stay tape to edges of armholes.

---

### **Step 3 — Open the plastic zip**

Open the plastic zip. Pin zip face down to left edge of one upper centre front piece, so that edge of zip tape lies 1 cm (3/8 in) from edge of seam allowance and teeth of zip lie on garment piece, 7 mm (1/4 in) past marked seam line. Begin at the top, at shoulder seam line, and turn top end of zip tape under. Stitch zip tape in place, close zip teeth, so that this seam lies 5 mm (3/16 in) from marked seam line. Leave bottom end of zip extending. Lay second upper centre front piece right sides together with front with zip and pin edges together, catching zip in between. Stitch exactly along line of zip attachment -seam, then continue stitching, along left shoulder edge and neck edge. Trim seam allowances, trimming corners diagonally. Turn piece right side out and press edges. Baste open edges together. Lay this piece face up on third upper centre front piece (on right side of fabric). Seam allowances of lower piece extend at left shoulder seam edge and at neck edge. Left zip tape lies on seam allowance of left section seam edge and teeth of zip lie on garment piece, next to marked seam line. Baste zip tape in place. Baste together along right shoulder seam edges, right section seam edges, and lower edges .

---

### **Step 4 — Stitch upper side fronts to upper centre front pieces**

Stitch upper side fronts to upper centre front pieces. Press seam allowances toward side fronts. Stitch back section seams. Press seam allowances open.

---

### **Step 5 — Zipper**

Sew invisible zip to upper back pieces.

---

### **Step 6 — Stitch centre seam of lower back**

Stitch centre seam of lower back. Stitch section seams of lower pieces. Stitch side seams of upper and lower pieces. Stitch lower unit to upper unit. Press seam allowances down. Trim end of zip tape and bind with a scrap of fabric.

---

### **Step 7 — Shoulder seams**

Stitch shoulder seams on dress and facing, beginning and ending stitching exactly at marked neck edge. Open front zip.

---

### **Step 8 — Neck edge**

Pin facing right sides together with neck edge. At zip slit, turn ends of facing back, approx. 5 mm (3/16 in) before marked seam line, and pin to neck edge. At edges of dress slit, turn allowances to outside and pin in place, over facing. Turn allowances on slit edges to inside. Turn facing up and stitch to seam allowances, as far as possible close to seam. Turn facing to inside and sew to zip tapes and to shoulder seams.

---

### **Step 9 — Fold pleats in sleeves in direction of arrows and baste**

Fold pleats in sleeves in direction of arrows and baste. Press sleeve hem allowances to inside and sew in place by hand.

---

## **Step 10 — Set in sleeves, easing sleeve caps**

Set in sleeves, easing sleeve caps.

---

## **Step 11 — Hem**

Press hem allowance to inside and sew in place by hand.

---

**BurdaStyle**

5/2011 Long-sleeved Dress with Zipper Detail