

burda style magazine 03/2010 Full Skirt

By: burda style magazine

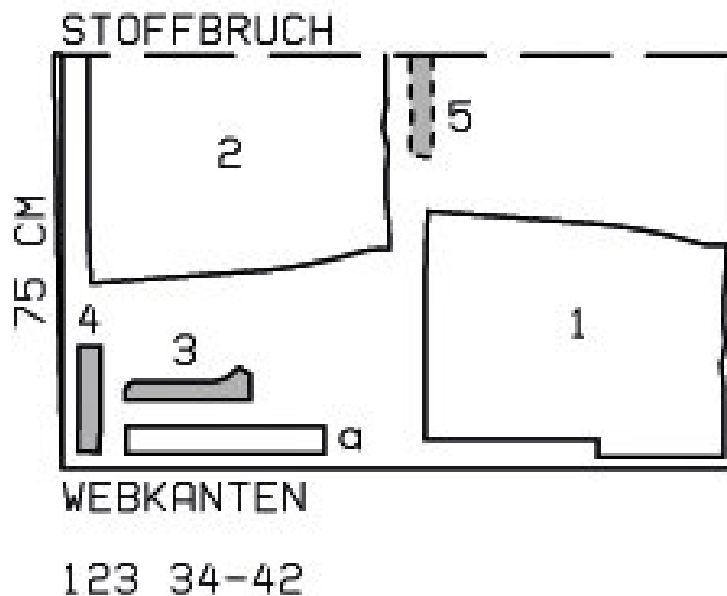
<http://www.burdastyle.com/projects/burda-style-magazine-032010-f>

Full Skirt burda style magazine patterns FAQ

Materials

Blend fabric (with metallic threads for crushed effect)

Step 1 — Preparation



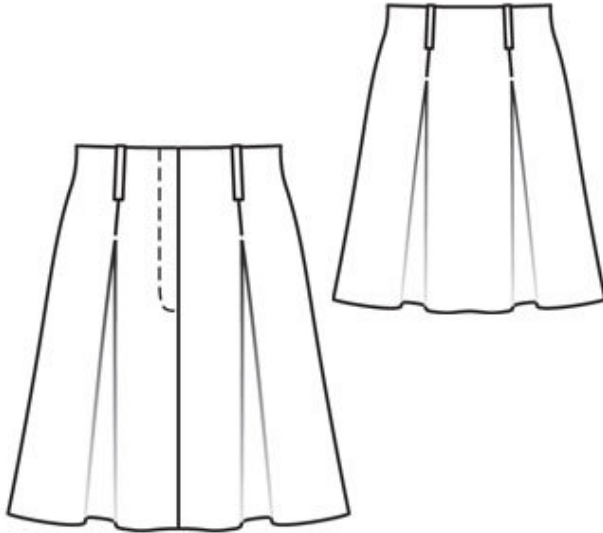
Trace the pattern pieces from the pattern sheet.

The stitching line at the zip opening on piece 1 is marked for size 34. For sizes 36 — 42, mark the stitching line the same distance from centre front as for size 34.

Seam and hem allowances:

Seams and edges 1.5 cm (5/8 in), hem 4 cm (15/8 ins).

Step 2 — Cutting Out



- 1â—front skirt panel 2x
- 2â—back skirt panel, on a fold 1x
- 3â—left underlap piece 2x
- 4â—front facing 2x
- 5â—back facing, on a fold 1x

a) 4 belt carriers, a total of 36 cm long, 5 cm (2 ins) wide (incl. allowance).

Interfacing: See pattern layout. Iron interfacing onto one underlap piece.

Step 3 — Centre Front Seam

Stitch centre front seam, leaving opening for zip. Press seam allowances open

Step 4 — Inverted Pleats

Fold each skirt panel on centre pleat line, right side facing in. Stitch outer pleat lines together, from upper edge to pleat arrow. Lay pleats in arrow direction and baste.

Step 5 — Side Seams

Stitch side seams on skirt and facing.

Step 6 — Belt Carriers

Fold strip for belt carriers lengthwise, right side facing in. Stitch 1.5 cm (5/8 in) from fold edge. Turn right side out. Topstitch close to edges. Cut into 4 equal pieces. Stitch belt carriers to skirt, over pleat seams, 7 cm (23/4 ins) below upper edge — belt carriers point down. Turn belt carriers up and baste to upper edge of skirt, easing in extra length.

Step 7 — Zip and Inside Button

Press attached facings at opening edges to inside. Stitch on the right along centre front and stitch on the left 5 mm (3/16 in) before centre front. Baste zip under left edge of opening (underlap), close to teeth of zip. Stitch both pieces for underlap right sides together, leaving straight edge open. Trim seam allowances. Turn underlap right side out and press. Work buttonhole. Lay underlap under left edge of opening and pin. Topstitch close to left edge of opening. Pin opening closed, matching centres. Stitch free zip tape to right facing, not catching skirt panel. Trim seam allowance to 1 cm (3/8 in) wide, up to 1 cm (3/8 in) above end of opening, then trim horizontally to edge of opening. Lay right facing with zip to outside and pin to upper edge of skirt. Stitch along upper edge of skirt. Turn facing at opening edge to inside and baste. Topstitch right edge of opening to 3 cm (1 1/4 ins) before end, as marked. Lay opening closed and topstitch to the end, catching underlap.

Sew inside button to inside of right facing, to match buttonhole.

Step 8 — Hem

Press hem allowance to inside and sew in place by hand.

BurdaStyle

burda style magazine 03/2010 Full Skirt