

09/2011 Girl's blouse

By: burda style magazine

<http://www.burdastyle.com/projects/092011-girls-blouse>



Girl's blouse burda style magazine patterns FAQ

Materials

Bastiste,

Step 1 — Preparation

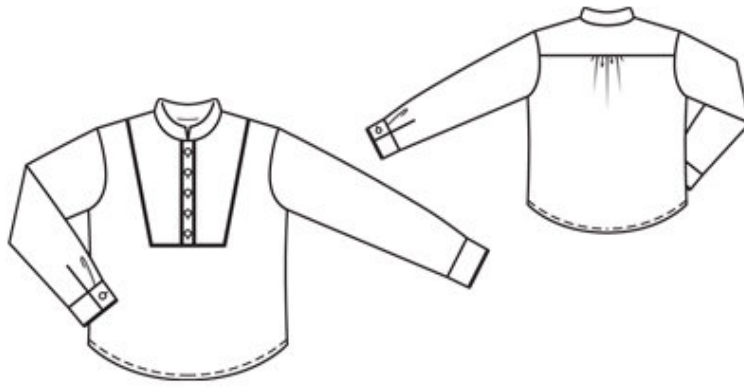


Paper cut for ANSI A (German DIN A4) prints:â€œâ€œThis pattern is printed on 8.5 × 11 sheets of plain paper. Do not scale or center pages before printing. Wait until all sheets are printed out before beginning to tape them together. **Do not cut out pattern pieces yet**— Arrange the sheets on a large, hard, flat surface so that they fit together, matching up like numbers and letters (i.e. 6A to 6A). To tape pattern together, fold under the margin of one piece (6A) and tape right against the line of it’s matching number/letter (6A).
â€œâ€œ**burda style magazine pattern do not have seam allowance included.**â€œâ€œSeam and hem allowances to be added: Seams and edges 1.5 cm (5/8 in). â€œâ€œsee example here: [HYPERLINK](http://www.burdastyle.com/projects/072011-jumpsuit/instructions/1)
“<http://www.burdastyle.com/projects/072011-jumpsuit/instructions/1>” \t “_blank”
<http://www.burdastyle.com/projects/072011-jumpsuit/instructions/1>

Step 3 — Piping

Baste the piping to the vertical front edges of the inserts so that the piping cord lies on garment piece, next to the marked seam line, and the flat edge of tape lies on seam allowance. Stitch each fastening band right sides together with the vertical edges of the front inserts. Press the seam allowances of the band joining seams and of other long edges of bands onto the bands. Fold the bands on the fold line, right side facing in. Stitch across the top ends, from the fold edge to the centre front. Clip the seam allowances to ends of seams. Turn bands right side out. Baste inside edges of bands to joining seams. Topstitch bands close to edges.

Step 2 — Cutting out



1â€“front, on a fold 1x

2â€“front insert 2x

3â€“fastening band 2x

4â€“back, on a fold 1x

5â€“back yoke, on a fold 2x

6â€“sleeve 2x

7â€“standing collar, on a fold 2x

a) 2 binding strips for sleeve vents, 14 cm long, 2 cm (3/4 in) wide (incl. allowances),

b) 4 cuff pieces, with 2.5 cm (1 in) underlap, 19.5 â€“ 19.5 â€“ 20 â€“ 20 â€“ 20.5 cm (73/4 â€“ 73/4 â€“ 8 â€“ 8 â€“ 8 1/4 ins) long, 3 cm (1 1/4 ins) wide.

Interfacing: See pattern layout. Also iron interfacing to wrong side of front, over bottom corners of insert joining seam

Step 4 — Buttonholes

Work 4 â€“ 4 â€“ 5 â€“ 5 â€“ 5 vertical buttonholes in left front band, at centre front. Work top buttonhole 1 cm (3/8 in) below upper edge, then work 3 â€“ 3 â€“ 4 â€“ 4 â€“ 4 more buttonholes, spacing them 3 â€“ 3.5 â€“ 3 â€“ 3 â€“ 3.5 cm (1 1/4 â€“ 1 1/2 â€“ 1 1/4 â€“ 1 1/4 â€“ 1 1/2 ins) apart. Lay the left band on the right band and baste the bottom edges together.

Step 5 — Piping

Baste the piping to the side and lower insert edges, clipping the tape at corners, close to the piping cord. Stitch the insert to the front, from each seam number 2 to the corner. At the corners, clip the seam allowance of the front close to the end of the seam. Stitch insert to front, from corner to corner. Press allowances onto the front. Work from the right side of the garment to topstitch close to the insert seams.

Step 6 — Gather

Gather the upper back edge between the asterisks.

Step 7 — Yoke

Pin the outer back yoke right sides together with the upper edge of the back. Pin the inside back yoke to inside upper edge of back, with right side facing wrong side. Stitch yokes in place together. Press yokes up. Stitch outer yoke to upper edges of front. Press the seam allowances onto the yoke. Turn in inside yoke and baste to joining seams. Topstitch yoke close to joining seams.

Step 8 — Collar

Lay the collar pieces right sides together. Stitch along the front and upper collar edges, beginning and ending stitching in front, exactly on seam line of the joining edge. Turn collar right side out. Stitch the outer collar piece to the neck edge of blouse. Turn in the inside collar piece and baste to joining seam. Topstitch collar close to edge.

Step 9 — Front and back

On the front and back, press the hem allowance to the inside, turn in, and stitch.

Step 10 — Sleeve vents

Slash the sleeve vents as marked. Spread the cut edges open to a straight line and stitch to the binding strip, as narrowly as possible. Press the binding strip over the joining seam into the vent, fold under to 5 mm (3/16 in) wide, turn edge under, and baste to joining seam. Mitre binding on inside at bottom of slit. On front edges of vents, turn binding to inside and baste to lower edge.

Step 11 — Sleeves

Stitch the sleeves to the edges of the armholes. Stitch the side seams and the sleeve seams as continuous seams.

Step 12 — Cuffs

Fold pleat in lower edge of each sleeve and baste. Baste the piping to lower edge of each outer cuff piece, turning ends of tape in toward seam allowance. Stitch outer cuff pieces to lower sleeve edges, leaving underlaps at the back vent edges extending, 2.5 cm (1 in) wide. Press the seam allowances of the joining seams onto the cuffs. Lay the inside cuff pieces right sides together with the outer cuff pieces. Stitch together

along ends, lower edges, and upper underlap edges, turning seam allowances of joining seam up again to do so. Trim seam allowances, trimming corners diagonally. Turn cuffs right side out. Turn inside edges under and sew in place.

Step 13 — Buttonholes

Work one buttonhole in front end of each cuff.

BurdaStyle

09/2011 Girl's blouse