

# 4/2010 Mens' shirt

By: burda style magazine

<http://www.burdastyle.com/projects/42010-mens-shirt>

---

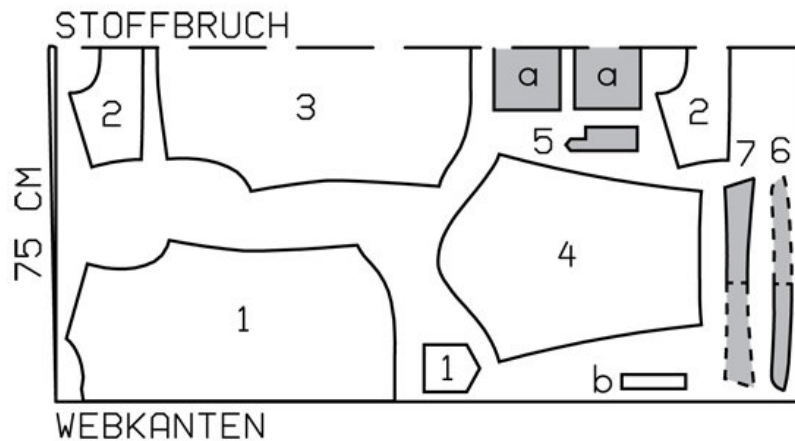
Mens' shirt burda style magazine patterns FAQ

## Materials

Chambray

---

## Step 1 — Preparation



128 A, B 48-56

Trace the pattern pieces from the pattern sheet. Trace the pocket from piece 1 as a separate pattern piece as it is the same for all sizes.

The buttonholes on piece 1 are marked for size 48. For sizes 50 to 56, mark the top buttonhole the same distance from neck edge as for size 48. The bottom buttonhole is in the same place for all sizes. Space the other buttonholes evenly in between.

Seam and hem allowances:

Seams and edges 1.5 cm (5/8 in), upper edge of pocket 2.5 cm (1 in), sleeve vent band 7 mm (1/4 in) (lower edge 1.5 cm / 5/8 in), hem 1.5 cm (5/8 in), no allowance on lengthwise edge of front self-facing.

---

## Step 2 — Cutting Out



1âˆ—front 2x

âˆ—pocket 1x

2âˆ—yoke, on a fold 2x

3âˆ—back, on a fold 1x

4âˆ—sleeve 2x

5âˆ—sleeve vent band 2x

6âˆ—collar band, on a fold 2x

7âˆ—collar, on a fold 2x

a) 2 cuffs, 26 âˆ— 26.5 âˆ— 27 âˆ— 27.5 âˆ— 28 cm (10 1/4 âˆ— 10 1/2 âˆ— 10 3/4 âˆ— 11 âˆ— 11 1/8 ins) long, 14 cm (5 1/2 ins) wide, finished width 7 cm (2 3/4 ins),

b) 2 binding strips for sleeve vents, 14 cm (5 1/2 ins) long, 3 cm (1 1/4 ins) wide -(incl. allowance).

Interfacing: See pattern layout.

---

### Step 3 — Yoke

Pin yoke pieces to upper edge of back, pinning one yoke to outside and other yoke to inside. Stitch yokes in place and press up. Stitch outer yoke to upper edges of fronts. Press seam allowances onto yoke. Turn in inside yoke edges and baste along joining seams. Topstitch yoke close to joining seams. Baste open edges of yoke together.

---

## Step 4 — Pocket

Press allowance on upper edge of pocket to inside, turn in, and stitch 2.5 cm (1 in) from edge. Press remaining pocket allowances to inside. Stitch pocket to left shirt front.

---

## Step 5 — Construct sleeve vents

Construct sleeve vents on right and left sleeves as mirror images: Press allowances on edges of vent band to inside, -except on long join-ing edge and bottom edge, and clip allowance diagonally into corner. Press band on fold line, wrong side facing in, then unfold again. Slash sleeves as marked. Pin binding strip right sides together with back cut edge. Stitch binding in place, 7 mm (1/4 in) from edge, ending stitching 7 mm (1/4 in) above end of vent. Clip sleeve diagonally from end of vent toward end of seam. Lay binding strip over cut edge to inside, turn edge in, and pin to joining seam. Work from right side to topstitch binding close to edge. Stitch outer half of band right sides together with sleeve, along joining line, from bottom to marking. Clip sleeve from end of vent, 1 cm (3/8 in) diagonally up toward band joining seam. Fold small triangle of fabric up onto right side of sleeve and lay top end of binding onto right side of sleeve. Fold band over vent and pin top end in place. Fold inside half of band to inside on fold line and baste to joining seam. Topstitch band close to joining seam. Edgestitch top end of band in place. Stitch across band as marked.

---

## Step 6 — Pleats on sleeves

Fold pleat in lower edge of each sleeve and baste.

---

## Step 7 — Stitch sleeves to armholes

Stitch sleeves to edges of armholes. Topstitch fronts, yoke and back 7 mm (1/4 in) from sleeve joining seams, catching seam allowances. Stitch side seams and sleeve seams as continuous seams.

---

## Step 8 — Hem

Press hem allowance to inside, turn in, and stitch in place.

---

## Step 9 — Self-facings

Fold self-facings to inside on fold line and press. Lay doubled facings to inside and press. Baste to neck edge and sew to the hem. Stitch inside edges of facing in place.

---

## Step 10 — Collar with collar band

Stitch collar pieces right sides together on outer edges. Trim seam allowances. Turn collar right side out and press. Topstitch 7 mm (1/4 in) from edges of collar. Lay collar band pieces right sides together, catching collar in between. Stitch along front and upper edges of collar band, beginning and ending stitching in front exactly on seam line of joining edge. Turn collar band right side out. Stitch outer collar band piece to neck edge of shirt. Press seam allowances onto collar band. Turn in inside collar band piece and baste over joining seam. Topstitch collar band close to all edges.

---

## Step 11 — Cuffs

Stitch outer halves of cuffs to lower edges of sleeves. Press seam allowances of joining seams and of other long edges of cuffs onto cuffs. Fold cuffs lengthwise, right side facing in, and stitch across ends. Turn right side out. Baste inside edges in place. Topstitch cuffs close to joining seam and 1 cm (3/8 in) from seam. Topstitch 7 mm (1/4 in) from side and lower edges of cuffs.

---

**BurdaStyle**

4/2010 Mens' shirt