

Detachable Peter Pan Collar

By: nimblefingers

<http://www.burdastyle.com/projects/detachable-peter-pan-collar>



Inspired by the lovely collars I see popping out of the tops of sweaters and dresses, I created this collar, which is one part alexa chung, and one part rosemary's baby. it's pretty easy to make and goes with everything. check out the blog for more details: the owls are not what they seem

Materials

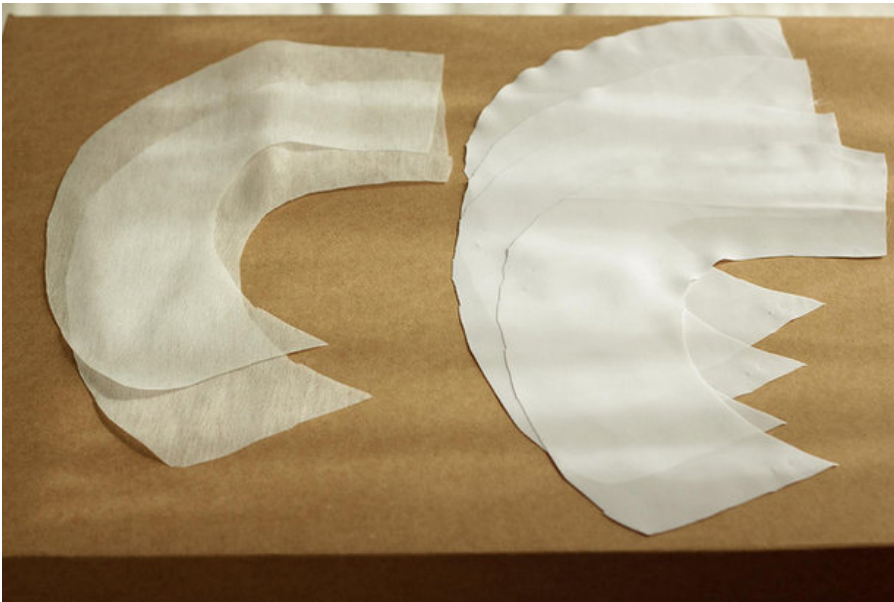
cotton fabric, interfacing, ribbon

Step 1 — 1. Print or make your collar pattern



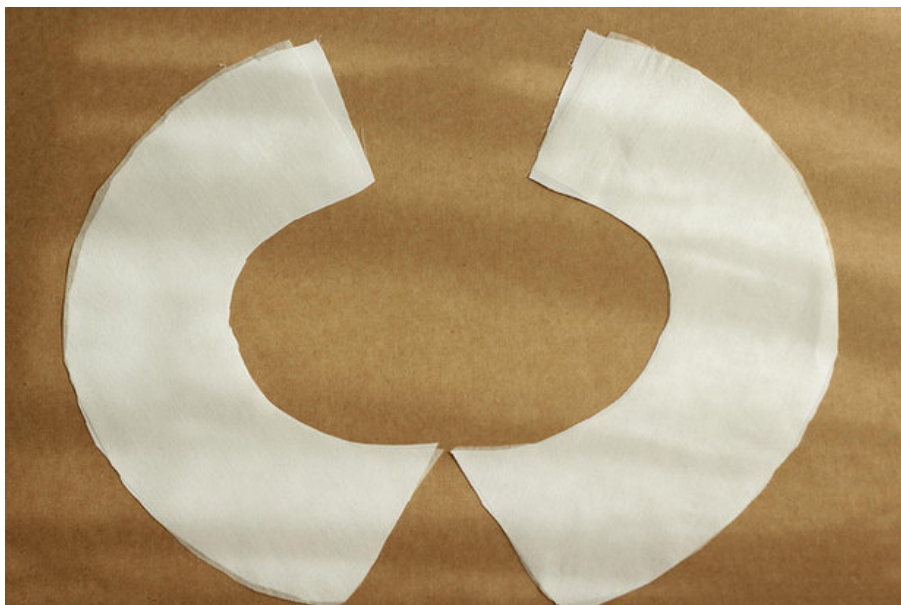
print out or make your own collar pattern. this pattern is designed to fit really close to your neck, to overlay high-necked dresses and blouses. if you want a deeper neck collar, or one that is perfectly fit to a specific neckline you have in mind, you can make your own pattern. just lay paper over the neckline of your shirt/dress, and trace around half of the collar (mid front, around the side to mid back), extend it out about 2.5â€² and round your front collar edge.

Step 2 — Cut out your fabric and interfacing



next, cut out your fabric and interfacing. double your main fabric, right sides together, and cut out 2 of the collar patterns (with the doubled fabric, that makes 4 pattern pieces). then double your interfacing, right sides together, and cut out 1 pattern piece (which results in 2 interfacing collars).

Step 3 — Iron Interfacing to Pieces



iron the interfacing on to 2 pieces of the main fabric. the pieces with interfacing will be your ' upper collar' (the part of the collar that is on top).

Step 4 — Stitch back seams together



stitch the back seams of the upper collar together with a $\frac{1}{2}$ " seam allowance. repeat for the under collar.

Step 5 — Press seams open and finish seams



press seams open and finish your seams (i cut them with pinking shears.) now you should have 2 pieces (complete upper and complete under collars).

Step 6 — Pin upper and under collar pieces together



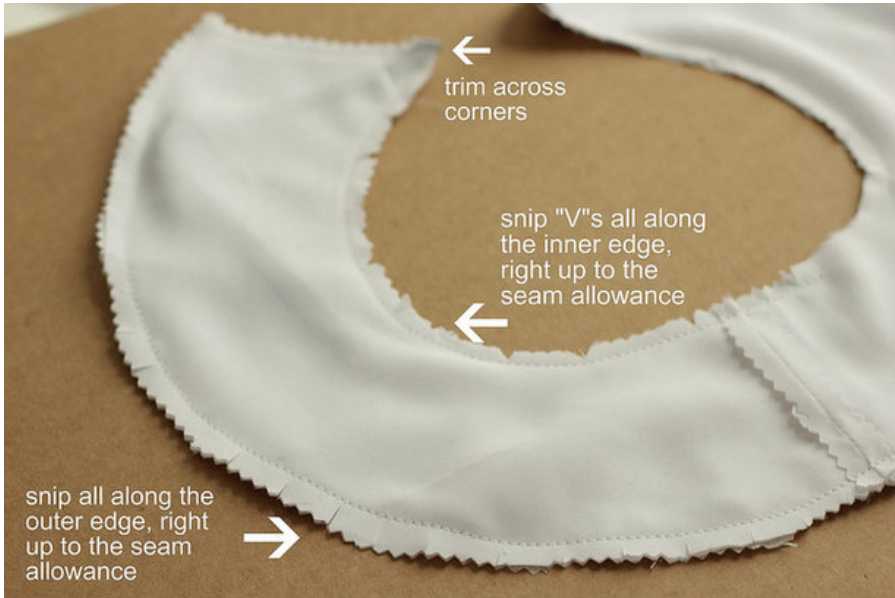
pin your upper and under collars, right sides together. also, sandwich your ribbon in between the 2 layers, making sure to only catch the edge of the ribbon in the corner seam. the left collar edge in the photo above is flipped back so you can see the placement of the ribbon, and the right collar edge is what it will look like after you place the collar on top.

Step 7 — Stitch collar pieces together



stitch all around the edges of the collar with a 1/4" seam allowance. make sure to leave a gap of about 2" to turn.

Step 8 — Pink edges, trim corners, and clip curves.



trim your edges (i used pinking shears again). trim corners and clip curves.

Step 9 — Press seams



press seams open first, then press them towards the under collar.

Step 10 — Turn collar and press



turn your collar right side out (through the hole) and use something sharp (a seam opener if you have one, otherwise a chopstick works great) to go all along the edges and especially corners to make sure it's completely turned out all of the way. press flat.

Step 11 — Hand stitch opening



hand stitch up the hole that you used to turn the collar using a blindstitch. basically just keep stitching the hole with the placement i have the needle above (where your thread stays on the inside and is invisible from the outside).

Step 12 — Topstitch



topstitch all along the edges. youâ’ re done!

BurdaStyle

Detachable Peter Pan Collar