

# twisted neckline/ twisted bias binding

By: redredhoodie

<http://www.burdastyle.com/techniques/twisted-neckline-twisted-bia>

---



Another way to finish raw edges with the classic bias binding. Visit my blog She sells sea shells for more tutorials, techniques and projects.

---

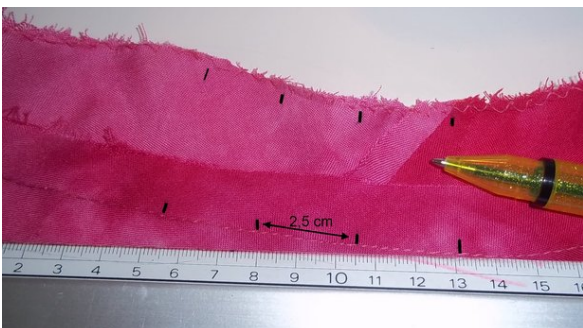
## Step 1 — preparation



Pin the bias tape to the edge you want to finish, rights side together. Sew it on, using a 1cm seam allowance.

---

## Step 2 — marking



Flip the bias binding up, iron the seam allowance- it should point upwards. Use a ruler and pen to mark every 2,5cm/ 1 inch on the seam allowance and the other side of the bias tape.

---

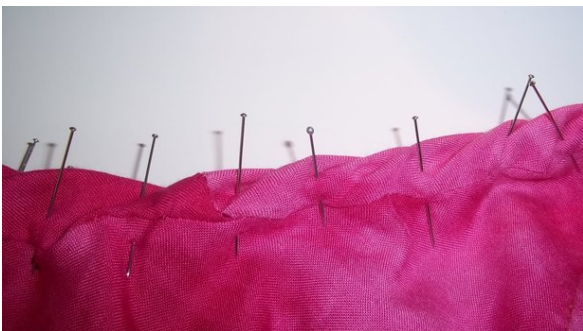
### Step 3 — diagram



This is a diagram of how the twist should be done. Every mark on top has to be matched up with the next mark on the bottom.

---

### Step 4 — pinning



Pin in place. It might take a little bit of pulling and readjusting to get the twist evenly but just be patient if it takes a while, it'll come together.

---

### Step 5 — sewing



Try to stitch in the ditch when sewing the twist in place.

---

**BurdaStyle**

twisted neckline/ twisted bias binding