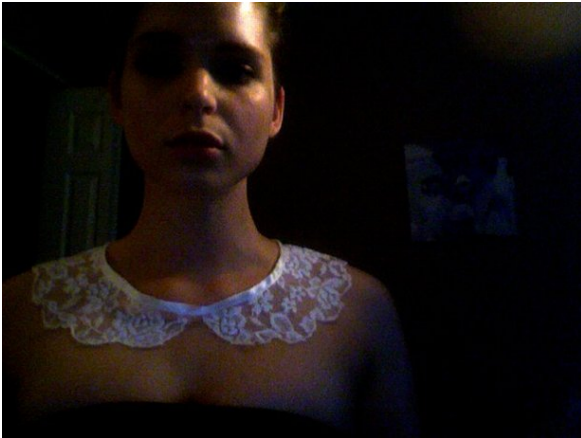


Lace Peter Pan Collar

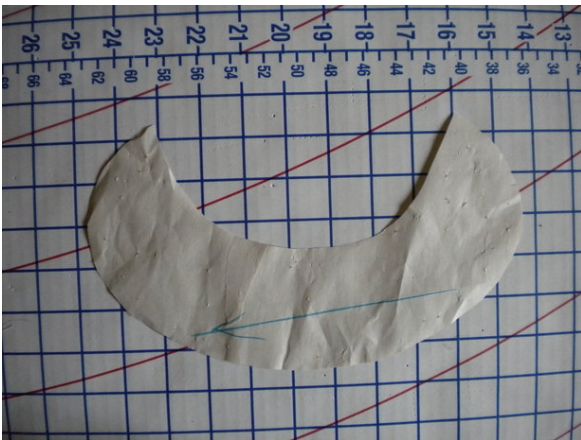
By: kimboat

<http://www.burdastyle.com/techniques/lace-peter-pan-collar>



This is a peter pan collar necklace i made, i thought i would show everyone how i did it because it was super simple and it's super cute!

Step 1 — Collar Pattern



Draft a peter pan collar pattern, there is a great tutorial here:

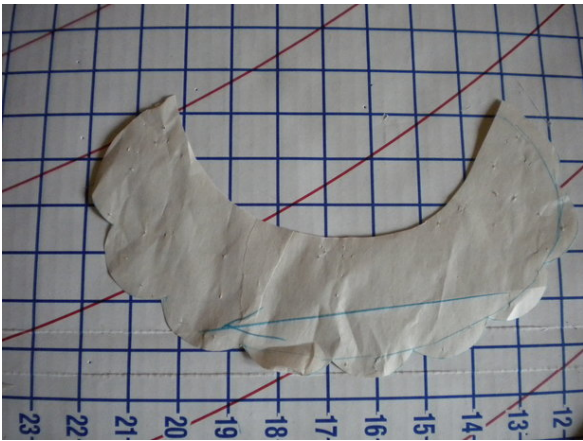
<http://www.blogforbettersewing.com/2010/02/drafting-peter-pan-collar-part-one.html>

Step 2 — Scallops



I drew a line one cm from the bottom edge of my collar pattern Then i used a cap to trace my scallops I places the cap right on the edge of the paper and traced until it hit my line at 1 cm then repeated the process

Step 3 — Cut pattern out



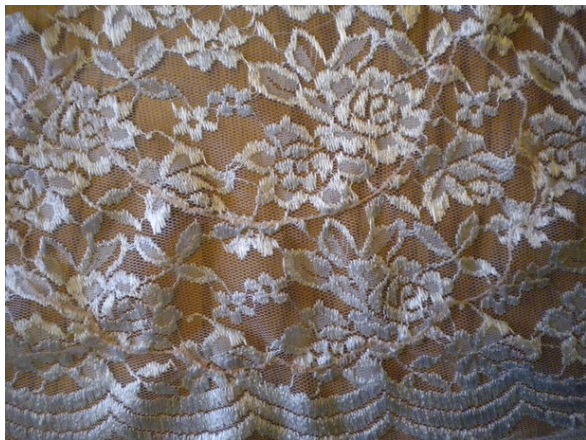
Cut the scallops out of the pattern

Step 4 — Trace



Pin the pattern onto a piece of lace and trace it. Repeat for the other side of the collar makings sure that you trace the pattern on the opposite side. i.e. one piece would be right side of pattern to right side of fabric and the other would be wrong side of pattern to right side of fabric

Step 5 — Edge



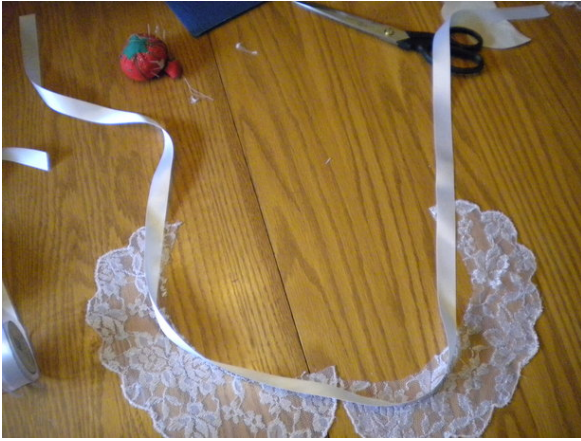
Do not cut the fabric out! what you want to do next is set your sewing machine to a very tight zig zag stitch, as if you were sewing a button hole. then sew along the scalloped lines you traced earlier. (this is where the clear foot come sin handy) it's not necessary to sew to top edge of the collar (i did for some reason, but it's not necessary)

Step 6 — Cut it out



cut out the collar being very careful not to cut your sitches around the edges.

Step 7 — Ribbon



Cut a length of ribbon twice the full length of the collar (both pieces) mark the center and from the center where the collar will start and finish (don't worry this doesn't have to be exact, the worst that will happen is one length of ribbon will be slightly longer than the other)

Step 8 — Baste



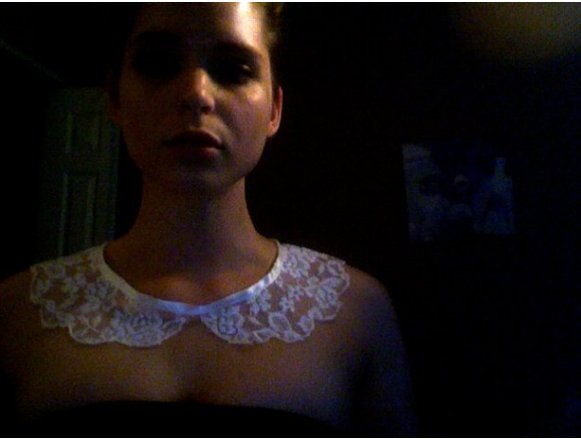
baste the ribbon to the two collar pieces starting at the mark you made earlier, leaving the ends of the ribbon loose as shown I recommend using a different color thread than your collar is because it makes it easier to remove afterwards

Step 9 — Finish Upper edge



finish the upper edge of the collar by folding the ribbon over (in half), matching the edges up, and stitching as close to the edge as possible

Step 10 — And voila!



you are done and ready to wear your new collar! i ironed the ribbon on mine a little and also hand washed out the chalk!

BurdaStyle

Lace Peter Pan Collar