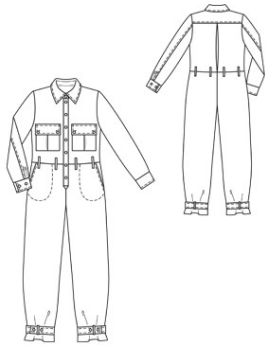


10/2010 Silk Jumpsuit

By: burda style magazine

<http://www.burdastyle.com/projects/102010-silk-jumpsuit>



Silk Jumpsuit burda style magazine patterns FAQ

Materials

Silk satin

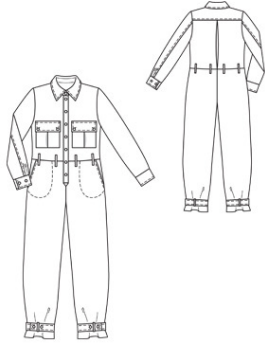
Step 1 — Preparation

Trace the pattern pieces from the pattern sheet. Lengthen pieces 30 and 32 as indicated. Note different lines for right and left bottom ends of front band. Trace marked pocket piece from piece 31, to abutting line. The snap fasteners marked on piece 29 are for size 36. For the other sizes, mark the top snap the same distance from upper edge as for size 36. The bottom snap is the same for all sizes. Mark the other snaps evenly in between. The markings for the belt carriers on pieces 21 and 22 are for size 36. Remark the belt carriers for the other sizes according to the size lines.

Seam and hem allowances:

Seams and edges 1.5 cm (5/8 in), \hat{A} -sleeve vent edges 3 cm (1 1/4 ins), upper edges of pockets 2 cm (3/4 in), trousers hem 6 cm (2 3/8 ins).

Step 2 — Cutting Out



- 21â—front 2x
 - 22â—back, on a fold 1x
 - 23â—back yoke, on a fold 1x
 - 24â—front sleeve 2x
 - 25â—back sleeve 2x
 - 26â—collar, on a fold 2x
 - 27â—collar band, on a fold 2x
 - 28â—pocket 2x
 - 29â—front band 2x
 - 30â—front trouser piece 2x
 - 31â—side hip yoke with
 - â— â—â—â—integrated pocket piece 2x
 - â— â— â—pocket piece 2x
 - 32â—back trouser piece 2x
 - a) 2 flaps, each 17 cm (6³/₄ ins) long, 15 cm (6 ins) wide, finished width 7.5 cm (3 ins),
 - b) 2 cuffs with 5 cm (2 in) overlap, each 31 â— 31.5 â— 32 â— 32.5 â— 33 cm (12¹/₄ â— 12¹/₂ â— 12³/₄ â— 12⁷/₈ â— 13 ins) long, 12 cm (4³/₄ ins) wide, finished width 6 cm (2³/₈ ins),
 - c) 2 tabs (hem), 51 â— 52 â— 53 â— 54 â— 55 cm (20¹/₄ â— 20¹/₂ â— 21 â— 21¹/₄ â— 21³/₄ ins) long, 8 cm (3¹/₄ ins) wide, finished width 4 cm (1⁵/₈ ins),
 - d) 4 loops (hem), a total of 32 cm (12³/₄ ins) long, 3 cm (1¹/₄ ins) wide (incl. allowance),
 - e) 8 belt carriers, a total of 80 cm (31¹/₂ ins) long, 3 cm (1¹/₄ ins) wide (incl. allowance).
- Interfacing: See pattern layout.

Step 3 — Pleats

Fold pleats in back in arrow direction and press. Baste to upper and lower edges.

Step 4 — Stitch back yoke to back

Stitch back yoke to back. Topstitch yoke close to seam and 7 mm (1/4 in) from seam.

Step 5 — Stitch side seams and shoulder seams of bodice

Stitch side seams and shoulder seams of bodice.

Step 6 — Patch pockets with flaps

Fold pleat in each pocket piece in arrow direction and press (right and left pockets as mirror images). Baste pleat to upper and lower edges of pocket. Press allowances on upper edges of pockets to inside, turn in, and stitch. Press allowances on side and lower edges to inside. Pin pockets to fronts, at abutting lines. Fold flaps lengthwise, right side facing in. Stitch across ends. Turn right side out. Topstitch flaps close to seamed edges and 7 mm (1/4 in) from seamed edges. Insert one top half of a snap in each corner of each flap. Stitch flaps in place, 1 cm (3/8 in) above pockets, press down, and stitch again close to joining seams. Mark positions of bottom halves of snaps on pockets. Remove pins from pockets. Insert bottom halves of snaps in pockets, catching pieces of interfaced fabric on the wrong side, for reinforcement. Edgestitch pockets in place on fronts.

Step 7 — Hip yoke pockets

Stitch pocket pieces right sides together with pocket opening edges of front trouser pieces. Turn pocket pieces to inside. Topstitch 5 mm (3/16 in) from pocket opening edges. Pin pocket opening edges to side hip yokes, at abutting lines. Baste pocket pieces to wrong side of front trouser pieces. To stitch the pocket pieces in place, pin paper pattern piece 31 to front trouser pieces and stitch along edge of pattern piece.

Step 8 — Stitch side seams and inside leg seams of trousers

Stitch side seams and inside leg seams of trousers. Pull one trouser leg over the other with right sides facing. Stitch front and back centre seam as continuous seam.

Step 9 — Bodice

Stitch lower edge of bodice to upper edge of trousers. Press seam allowances up. Topstitch bodice close to seam.

Step 10 — Front bands

Stitch interfaced half of each band to vertical edges of fronts and front trouser pieces. Clip seam allowances of front trouser pieces into corners. Press seam allowances of band joining seams and of other long edges of bands onto bands. Fold right band on fold line, right side facing in, and stitch pointed bottom end. Trim seam allowances. Turn band right side out and press. Baste inside edge of band to joining seam. Fold left band to inside on fold line and press. Baste inside edge to joining seam. Topstitch bands close to joining seam and close to front edge. Stitch bottom end of left band to front trouser piece. Pin right band to left band, matching centres. Edgestitch right bottom end of band to front trouser piece and stitch horizontally across band at beginning of point.

Step 11 — Collar with collar band

Stitch collar pieces right sides together along outer edges. Turn collar right side out, press, and topstitch close to edges. Lay collar band pieces right sides together, catching collar in between. Stitch along front and upper edges of collar band, beginning and ending stitching in front exactly on seam line of joining edge. Turn collar band right side out. Stitch outer collar band piece to neck edge. Press seam allowances onto collar band. Turn in inside collar band piece and baste over joining seam. Topstitch close to edge of collar and again 7 mm (1/4 in) from edge.

Step 12 — Sleeves

Stitch back sleeve seams up to vent mark. Press seam and vent allowances onto front sleeves. For the underlap at back vent edges, lay allowance to inside, 1 cm (3/8 in) from marked line, turn in, and stitch. Turn in allowances at front edges of vent and baste. Topstitch front sleeves along seams and vent edges. Stitch across top end of each vent, catching underlap.

Step 13 — Stitch underneath sleeve seams

Stitch underneath sleeve seams. Fold pleat in lower edge of each sleeve in arrow direction and baste.

Step 14 — Cuffs

Stitch cuffs to lower edges of sleeves, leaving overlaps extending at front edges of vents. Press seam allowances of joining seams and of other long edges of cuffs onto cuffs. Fold cuffs lengthwise, right side facing in. Stitch across ends and stitch upper extending edges together. Lay seam allowances of joining seam down again to do this stitching. Trim seam allowances, trimming corners diagonally. Turn cuffs right side out. Baste inside edges in place. Topstitch cuffs close to joining seam. Topstitch close to outer edges and again 7 mm (1/4 in) from edges.

Step 15 — Set in sleeves, easing sleeve caps

Set in sleeves, easing sleeve caps.

Step 16 — Hem Allowances

Press hem allowances to inside, turn in to a width of 3 cm (1 1/4 ins), and stitch in place.

Step 17 — Belt carriers

Fold strip for belt carriers lengthwise, right side facing in. Stitch 7 mm (1/4 in) from fold edge. Turn right side out. Topstitch close to edges. Cut strip into 8 equal pieces. Turn ends of each piece under, for a finished length of 7 cm (2 3/4 ins). Pin belt carriers in place over waist seam, as marked. Edgestitch ends of belt carriers in place.

Step 18 — Loopes for trouser legs

Sew 4 loops for the trouser legs in the same manner as for belt carriers. Finished length of each loop is 5 cm (2 ins). Stitch one loop, centred, to each front and back trouser piece, 3 cm (1 1/4 ins) from hem edge.

Step 19 — Tabs

Fold tabs lengthwise, right side facing in. Stitch edges together, leaving a section of seam open for turning. Turn tabs right side out. Sew seam openings closed. Topstitch tabs. Insert top halves of snaps in each tab, 1.5 cm (5/8 in) and 7 cm (2 3/4 ins) from one end. Insert bottom halves of snaps in opposite ends to match. Lay each tab on lower edge of trouser leg, between markings so that tab end with top halves of snaps extends 3

cm (1 1/4 ins) past front loop. Stitch tabs in place, along line of inside leg seams.

BurdaStyle

10/2010 Silk Jumpsuit