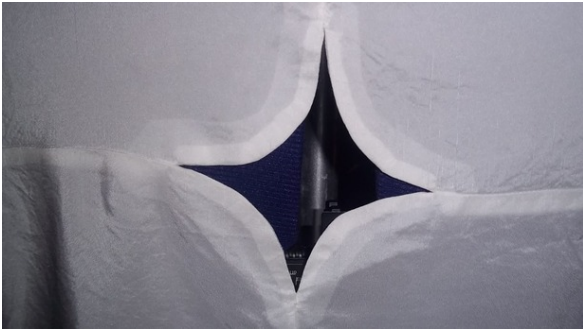


How to sew a cutout detail

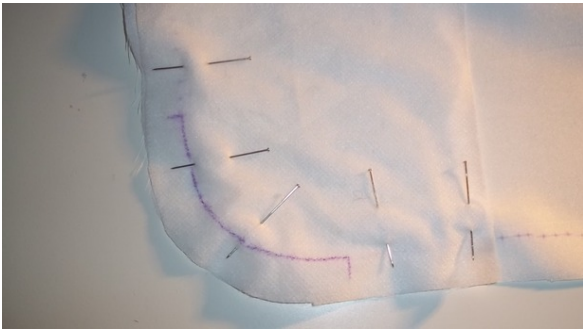
By: redredhoodie

<http://www.burdastyle.com/techniques/how-to-sew-a-cutout-detail>



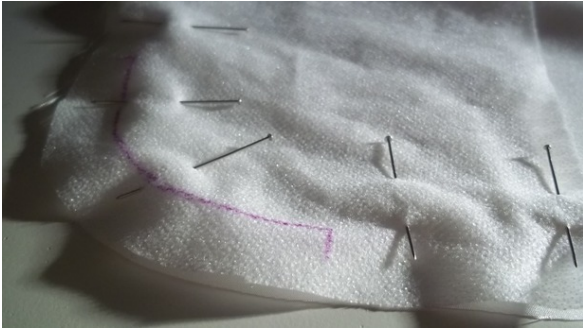
This is a technique I use whenever I want to incorporate a cutout detail in my project, mostly on the backs. It works with all shapes and can be also helpful for bound pockets or button holes.

Step 1 — Preparation



First you want to mark the outline of the cutout. I'm demonstrating this on a curved edge, Next you want to pin some fusible interfacing to the edge. The weight of the interfacing depends on the weight of your fabric. For this sheer silk that I worked with, I used the lightest one I could find because I don't want any edges to show up on the right side of the fabric. If you work with a heavy fabric you also want to use heavier interfacing so it's strong enough to keep the seam allowance in place.

Step 2 — Attention



The most important thing in this step is to pin the **RIGHT SIDE** of the fashion fabric to the **RIGHT SIDE** of the interfacing. You have to see the glue dots at this point! In my case they are facing upwards.

Step 3 — Action



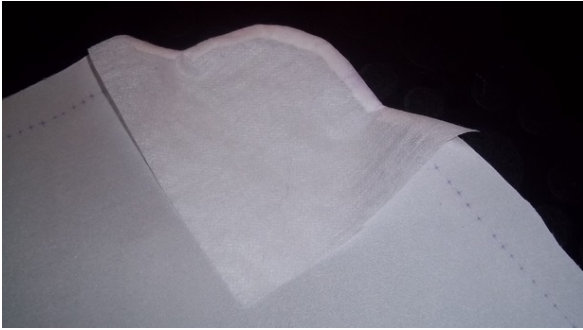
Next, sew a straight stitch on your marked seam.

Step 4 — Snipping



Snip off most of the seam allowances, there should be ca. 0,5cm left. Again, you might want to adapt this step to the weight of your fabric. When I use a heavier fabric, I like to keep a little bit more of the seam allowance. If you're working on a curve, clip into the seam allowance, so it will lay more flatly when turned.

Step 5 — Turning & Pressing



Then turn the interfacing to the wrong side of your fashion fabric. The side of the interfacing with the glue on should now face the wrong side of your fabric. If the interfacing will show up on the outside because you're working with a sheer fabric, I'd also trim the interfacing a bit. Now iron the interfacing to the fashion fabric according to the instructions you can usually find on the selvage of the interfacing.

Step 6 — Finishing



This is how your finished edge should look like when done. You could also topstitch it in place to make the hem more secure.

BurdaStyle

How to sew a cutout detail