

Easy, Pretty Cornered Seams Tutorial

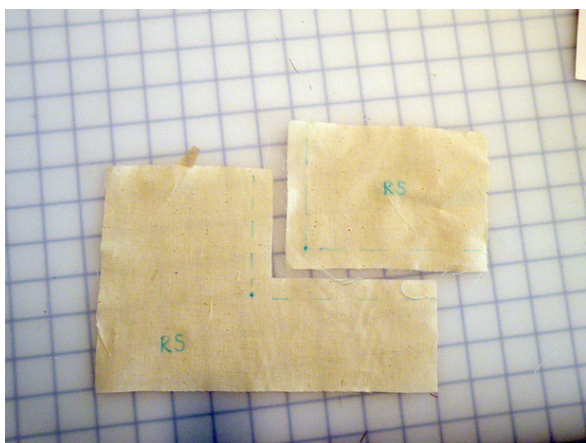
By: bekabug8

<http://www.burdastyle.com/techniques/easy-pretty-cornered-seams>



I learned this technique for sewing cornered seams at FIDM in my Industry Sewing course and thought I would share it with you. It is rather straightforward and has worked every time for me. It was one of those life-changing sewing moments! This is my first time posting a technique on BurdaStyle so bare with me :) If you like this tutorial, check out my blog at: www.uglycutedesigns.blogspot.com I have a couple other tutorials on my blog and projects I haven't posted on BurdaStyle yet. Enjoy and I hope this helps!

Step 1 — Mark pieces



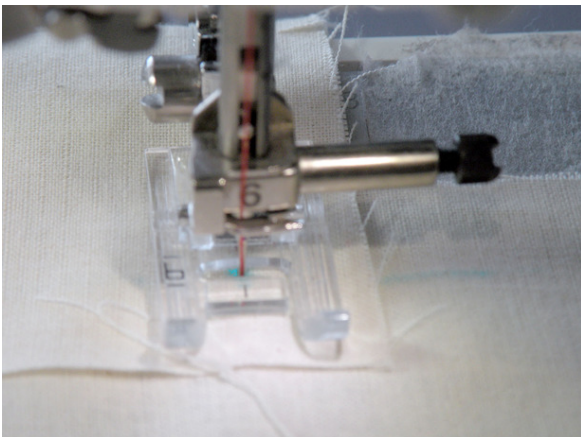
Mark the pieces with any method you like at the corner. Depending on the fabric, I use disappearing ink or tailor-tacks. Here, I marked with disappearing ink. For the tutorial only, I marked the stitching line and the Right and Wrong sides (RS/WS). I used a 1/2" SA, but any SA will work.

Step 2 — Place pieces RS together



Place pieces RS together, matching up notches, stitching line and corner "dot."

Step 3 — Stitch to corner



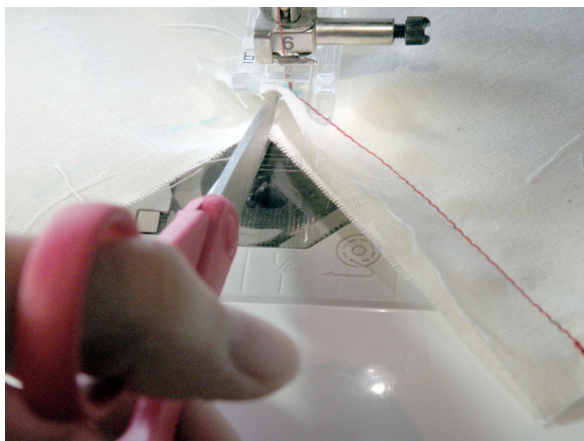
Stitch to the corner "dot." This needs to be EXACT!

Step 4 — Rotation #1



With the needle down, lift the presser foot and rotate both pieces so the corner is facing you.

Step 5 — Clip Corner



Clip into the corner all the way to the needle. It is OKAY to let the scissors touch the needle. This step is really important.

Step 6 — Rotation #2



Rotate the pieces back to their original position so the piece on top (the inset piece) is back on the stitching line.

Step 7 — Line Up Cut Edges



Now here is the only tricky part. With the presser foot still up and the needle in the fabric on the "dot," rotate the top inset piece toward you rotating it counter-clockwise. At the same time, rotate the bottom piece clockwise, so the raw edges will meet. The next two pictures illustrate this and the drawn on arrows show which way to rotate the pieces. Because we clipped the corner, we can do this easily!

Step 8 — Stitch Other Side of Corner



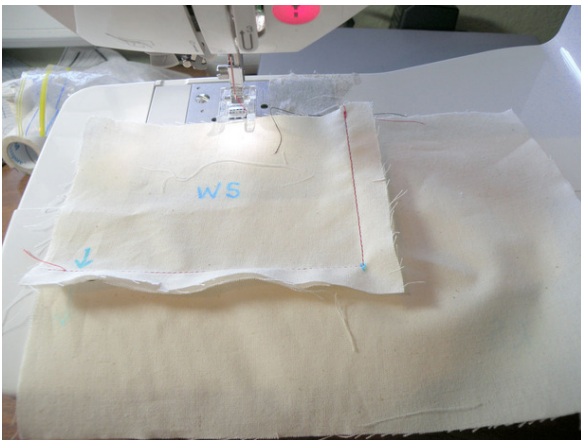
As you can see, the pieces are still RS together and the raw edges are lined up on the correct line on the throat plate. You can't see it, but all the excess fabric is pushed aside under the inset (top) piece so that when stitching the 1/2" seam, nothing is caught in the stitching line. Then stitch to the end.

Step 9 — What it Looks Like before Pressing



Here is the WS, right after it is stitched. By clipping and rotating the the pieces, it spreads that clip.

Step 10 — Pressing



There is no need to clip the inset piece. The pieces automatically lie toward the larger piece. Press in that direction unless there is a reason to press the toward the inset piece. If you need to press that way, you will need to take a wedge out of the corner.

Step 11 — Final Seam!



Pressed from the front! Isn't it beautiful!

BurdaStyle

Easy, Pretty Cornered Seams Tutorial