

Making perfect Foundation Pattern

By: fuccosim

<http://www.burdastyle.com/techniques/making-perfect-foundation-pattern>

in order to make perfect cloth, must make perfect foundation. this is step by step how to draw the pattern based on measuring sheet from <http://www.burdastyle.com/techniques/where-to-measure-working-sheet>. this foundation pattern can arrange to all kind of pattern.

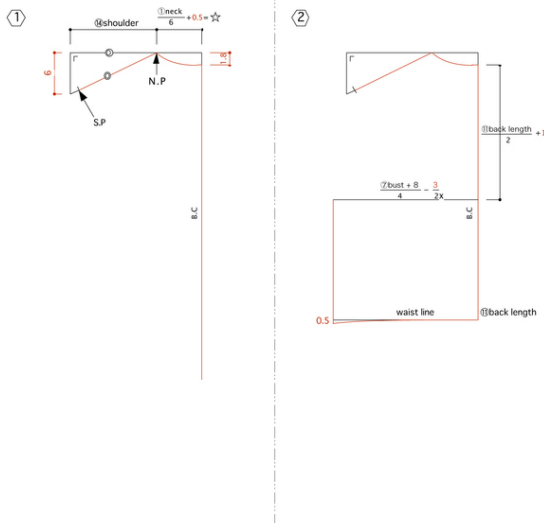
Step 1 — start from Back side.



Make Perfect Foundation pattern

- * Prepare your measuring working sheet.
- * Numbers in circle are from working sheet.
(<http://www.burdastyle.com/techniques/where-to-measure-working-sheet>)
- * RED numbers = most common numbers.
not so necessary to change.
- * scale=1/5 measure=cm

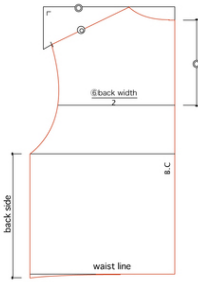
start from BACK ① ②③



follow the picture.

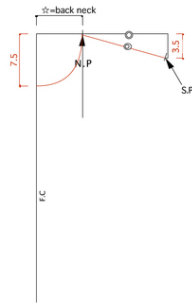
Step 2 — draw front side

③

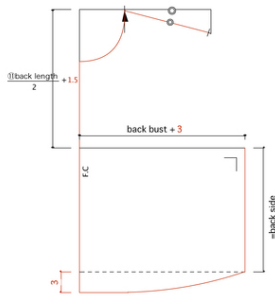


Draw FRONT ① ② ③

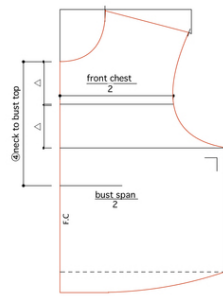
①



②

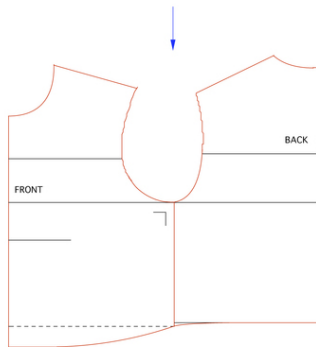
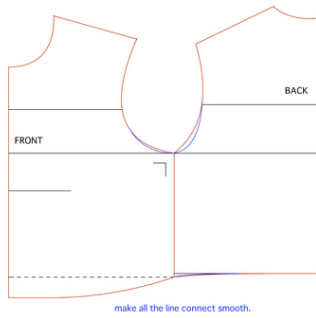


③



follow the picture. *front side must be same length with back side. *F.C to N.Pä——= B.C to N.P

Step 3 — final adjustment



face to face the front side and back side and make the all the curve line (A.H, W.L)ã—smooth. see the blue line in picture.