

How to turn the back of a classic pants pattern into a more flattering one...

By: inesgr

<http://www.burdastyle.com/techniques/how-to-turn-the-back-of-a-classic-pants-pattern-into-a-more-flattering-one>

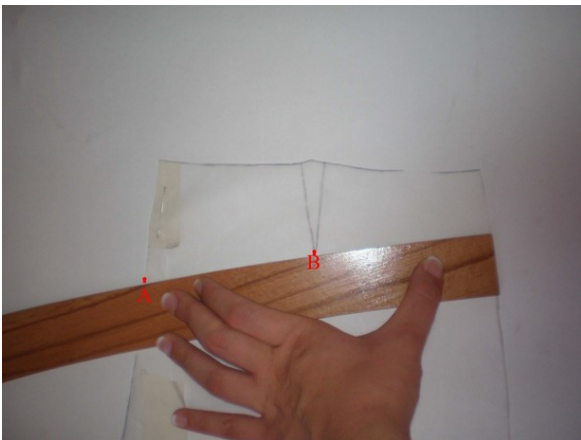
Well, I am from Greece where women are usually a little bit curvy, especially in the bottom area... What I've learned all these years of trying to turn my flaw into a benefit is that those one piece pants are not very flattering for any body type. So I always have to make this little alteration to all pants patterns in order to divide each back piece into two. Unfortunately I don't know how this type of pants is called, I would be grateful if someone of you informed me how this little piece of fabric is called.

Step 1 — starting up



In the center of your initial pattern decide how much wide will the extra piece be and place a mark at this point (mark A)

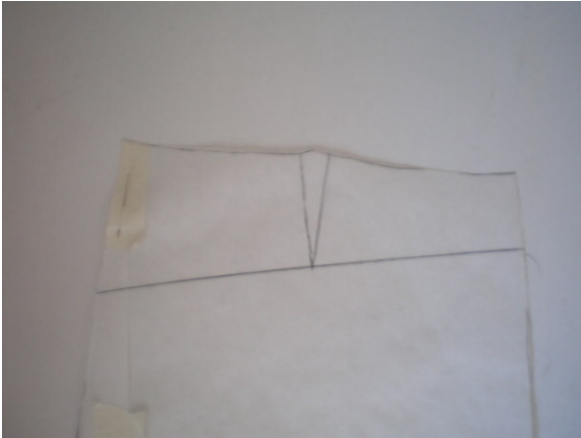
Step 2 — making the first line



Using the thinner (and more straight) end of your hip curve ruler draw a line starting from mark A, to mark B (mark B is the point where the pleat marks end) until you reach the other side of the

pattern. If you don't have a hip curve just use a regular ruler

Step 3 — the line



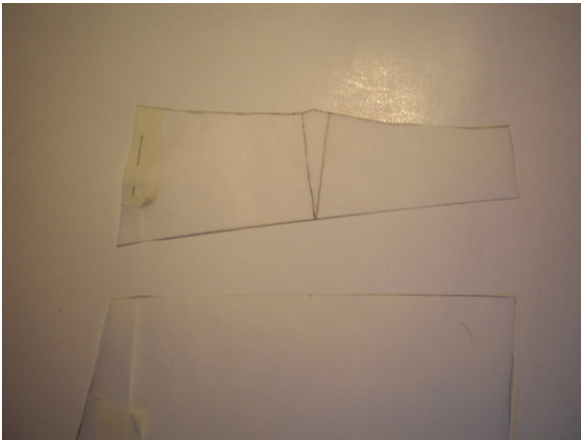
This is how your line will look

Step 4 — making the first cut



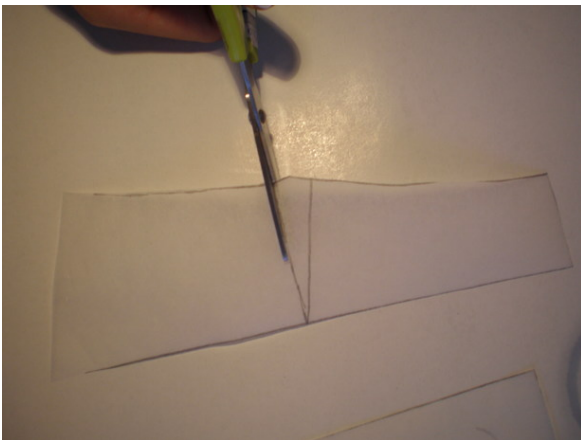
Cut on the line you have drawn

Step 5 — now there are two pieces



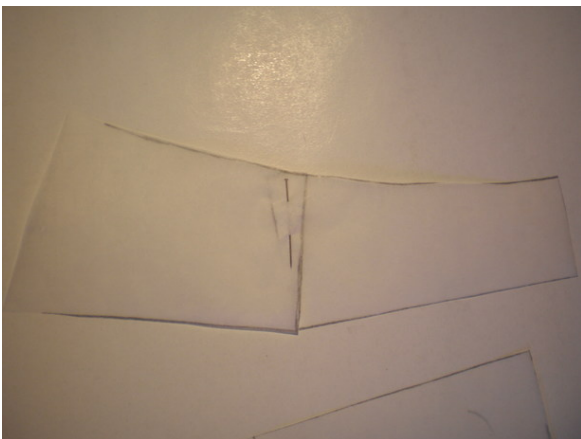
We will work further on the small piece.

Step 6 — cutting on the pleat



Cut on th pleat line

Step 7 — adjust the pleat



With a pin, close the pleat

Step 8 — redrawing the small piece



Put another piece of paper on the pattern and using the hp curve ruller, redraw the bottom line and all the other lines as they are.

BurdaStyle

How to turn the back of a classic pants pattern into a more flattering one...