

# The projection of the sewing patterns on the dressdummy-Halter dress (part 5.)

By: Hajnika

<http://www.burdastyle.com/techniques/the-projection-of-the-sewing-patterns-on-the-dressdummy-halter-dress-part-5>

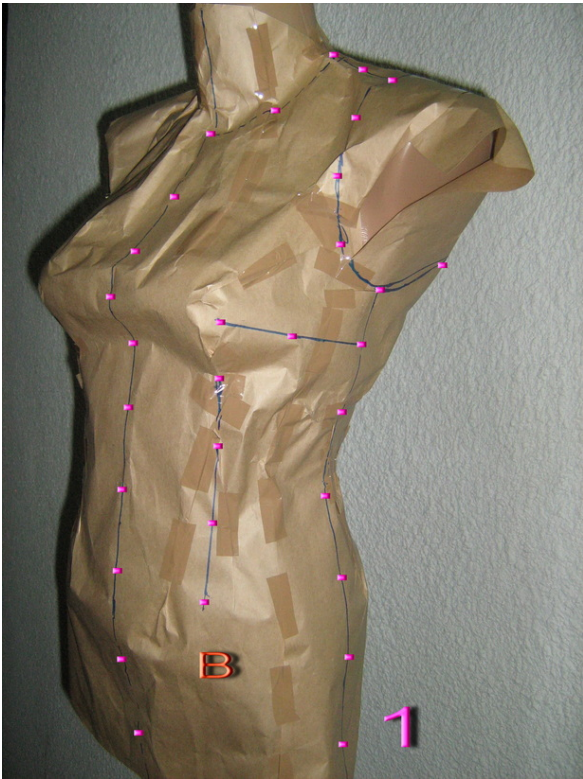
---



This time I want to show you,how I made two sewing patterns on my dressdummy in the same time. I have made a halter dress sewing pattern on the right side of the dressdummy and another sewing pattern on the left side of it. You can study ,seeing the pictures,the step-by-step instructions,how I traced the lines of the sewing patterns,then how I modified them and few essential advices for the sewing details for the halter dress,which I made from the sewing pattern projected on the dressdummy.

---

**Step 1 — Step1**



The first picture you see ,you can study the front of the sewing pattern,which I drew,marked with red B and it is situated on the left side of the dressdummy.You can observe the sewing lines,marked with pink dots.

---

**Step 2 — Step2**



This is the back part of the sewing pattern, on the left side of the dress dummy, marked with red B.

---

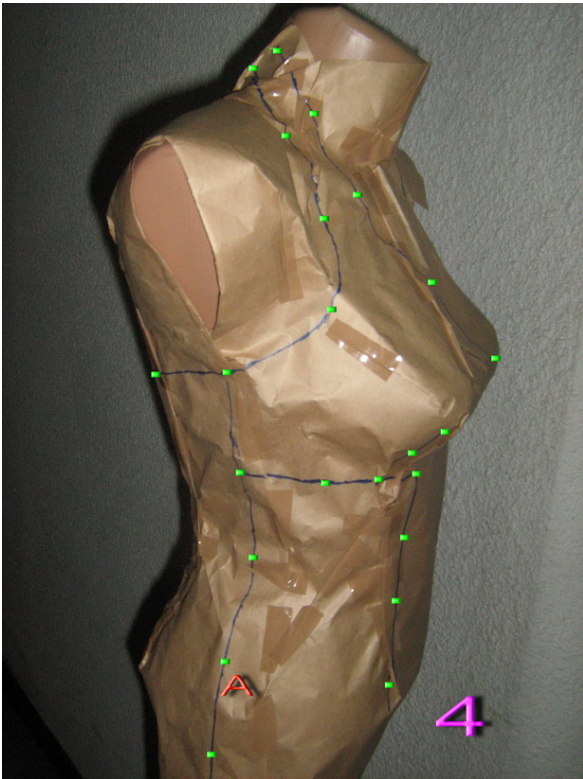
### Step 3 — Step3



On this picture you can study the sewing lines (marked with green dots) of the front sewing pattern of the halter dress, which is situated on the right side of the dress dummy and it is marked with red A.

---

### Step 4 — Step4



Here you can observe the lateral side of the sewing pattern, marked with red A.

---

#### Step 5 — Step5



You can see, where will be situated the pleats on the bust part and you can observe that you have to trace the line of the dart for the bodice, starting from the middle line of the pleat.

---

### Step 6 — Step6



This is the sewing lines of the back part of the sewing pattern marked with red A.

---

### Step 7 — Step7



Once again, the front of the sewing lines.

---

### Step 8 — Step8



Is better that you trace the waist line in order to cut the pattern if you want to attach another style of skirt(circle skirt for example).You can trace another line around the hip,if you want to attach the skirt there.

---

### Step 9 — step9



There are the sewing patterns cutted in half,marked with red A and red B.

---

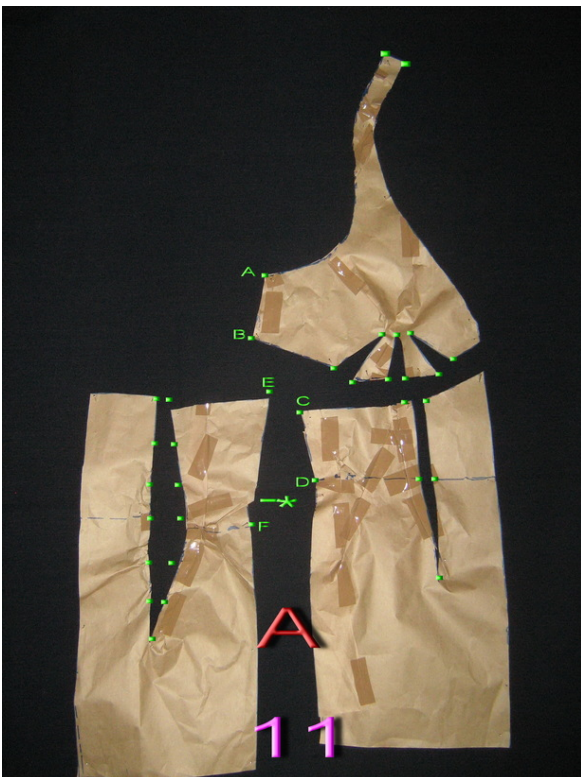
### Step 10 — Step10



You have to cut all those sewing lines for the dart of the bust and the body. Here you can see the front and back pieces of the sewing pattern, marked with red B. You need to put these basic pattern pieces on another paper and trace the lines all around and you have to mark the darts too.

---

### Step 11 — Step 11

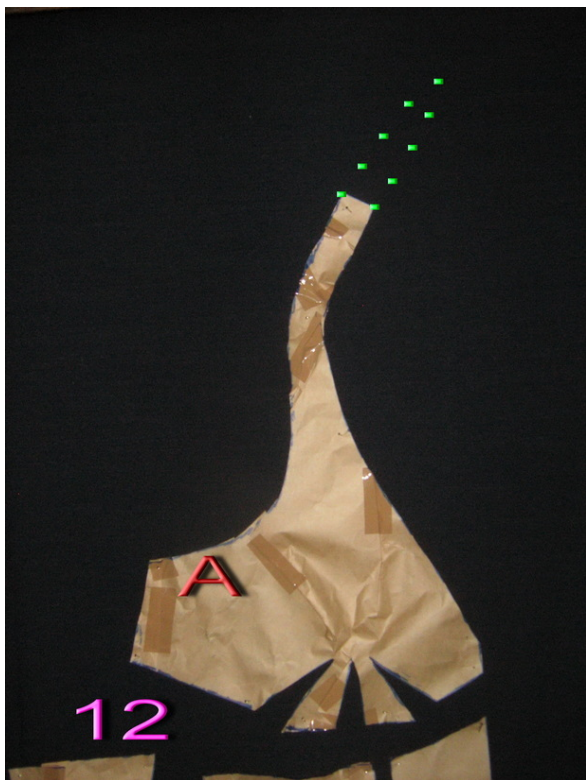




Here you can see the back, the front and the bust pattern pieces of the sewing pattern, marked with A, after that you cutted down from the dressdumy. You have to cut all those lines for the darts and pleats. Now, look at the back piece of the pattern. You have to modified a bit, if it is necessary. Everybody has the own body shape. In this case it was modified the line of the dart for the little lejerity and to be easier to sew. The lines of the dart must be equals. I have made a little pleat, where you see next to green star, so the line, between E and F pints got shorter. Even for this you need to make longer the line between E and F. This line must be longer to be equal with the lateral side of the front part. So  $EF=AB+CD$ .

---

### Step 12 — Step12



You can see the bust part of the sewing pattern, marked with red A. You can observe those green dots at the back of the neckline. This is for in order to make a knot in the backside.

---

### Step 13 — Step13



This is the front of the dress inside. You can observe the sewing lines (marked with green dots) of the bust part attached. There are the pleats, which was made. For this you have to simply fold where was marked those lines on the paper. For the neckline and the edge of the back, you have to cut other pieces of fabric, which will be sew face to face to the neckline and back part, and then you have to turn and stitch, like on the picture. Before you sew these pieces for the edges, you have to sew the zipper and sew the lateral sides of the bodice.

---

**Step 14 — Step14**



This is the back of the dress inside.

---

**Step 15 — Step15**



Other picture from the dress inside.

---

**Step 16 — Step16**



Once the bodice is ready,you have to attach the skirt.

---

**Step 17 — Step17**



The front of the ready done dress.

---

**Step 18 — Step18**



The back of the ready done dress.

