

Summer Beach Hat

By: BurdaStyle

<http://www.burdastyle.com/projects/summer-beach-hat>

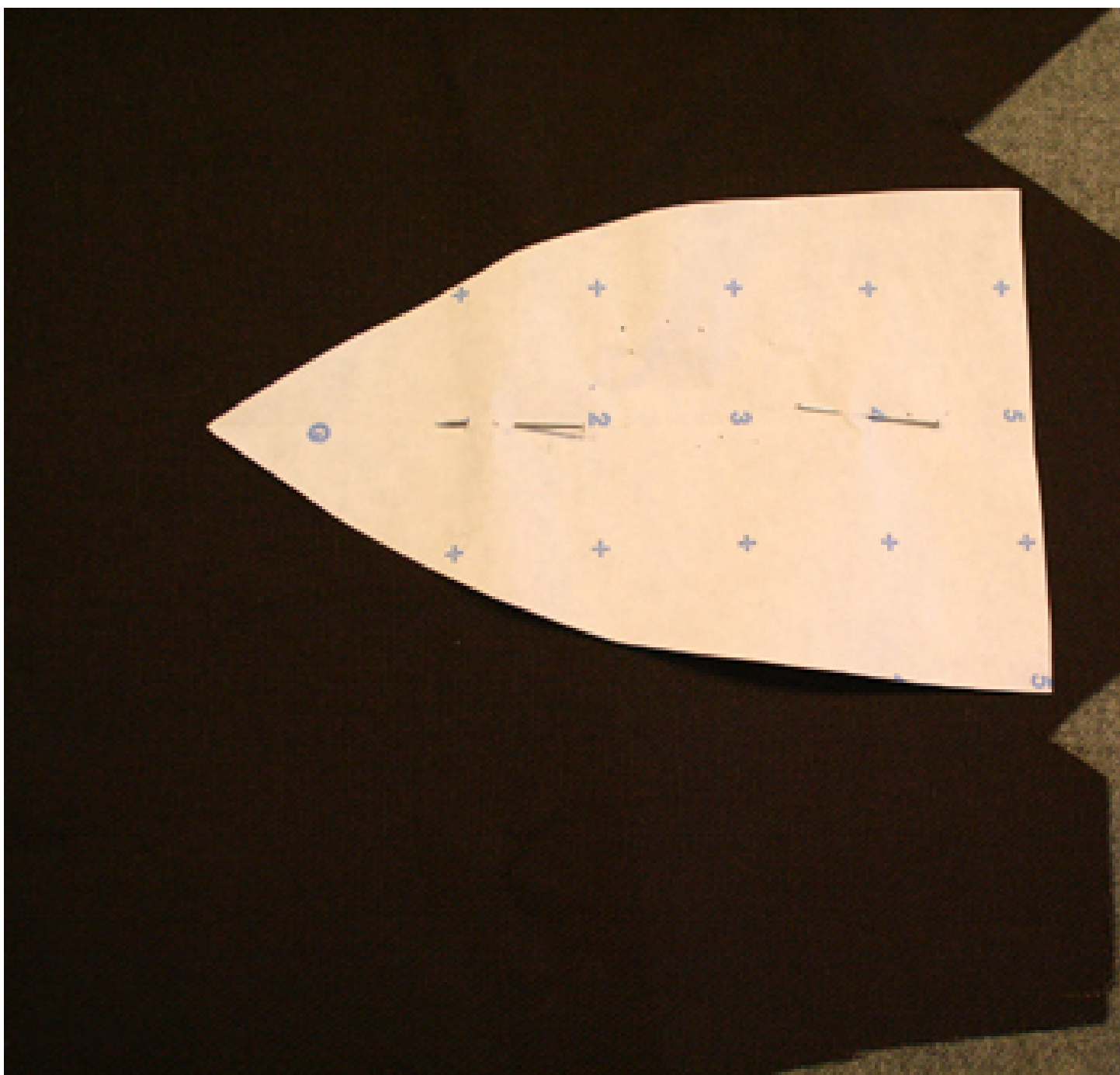


Wide brimmed hats are not only super chic and classy but are useful in keeping the sun out of your eyes. We've created a TUTORIAL so you can create your very own customized summer hat. Welcome summer!

Materials

1 yard of brown linen, fusible interfacing.

Step 1 — Measure & Create Pattern Pieces



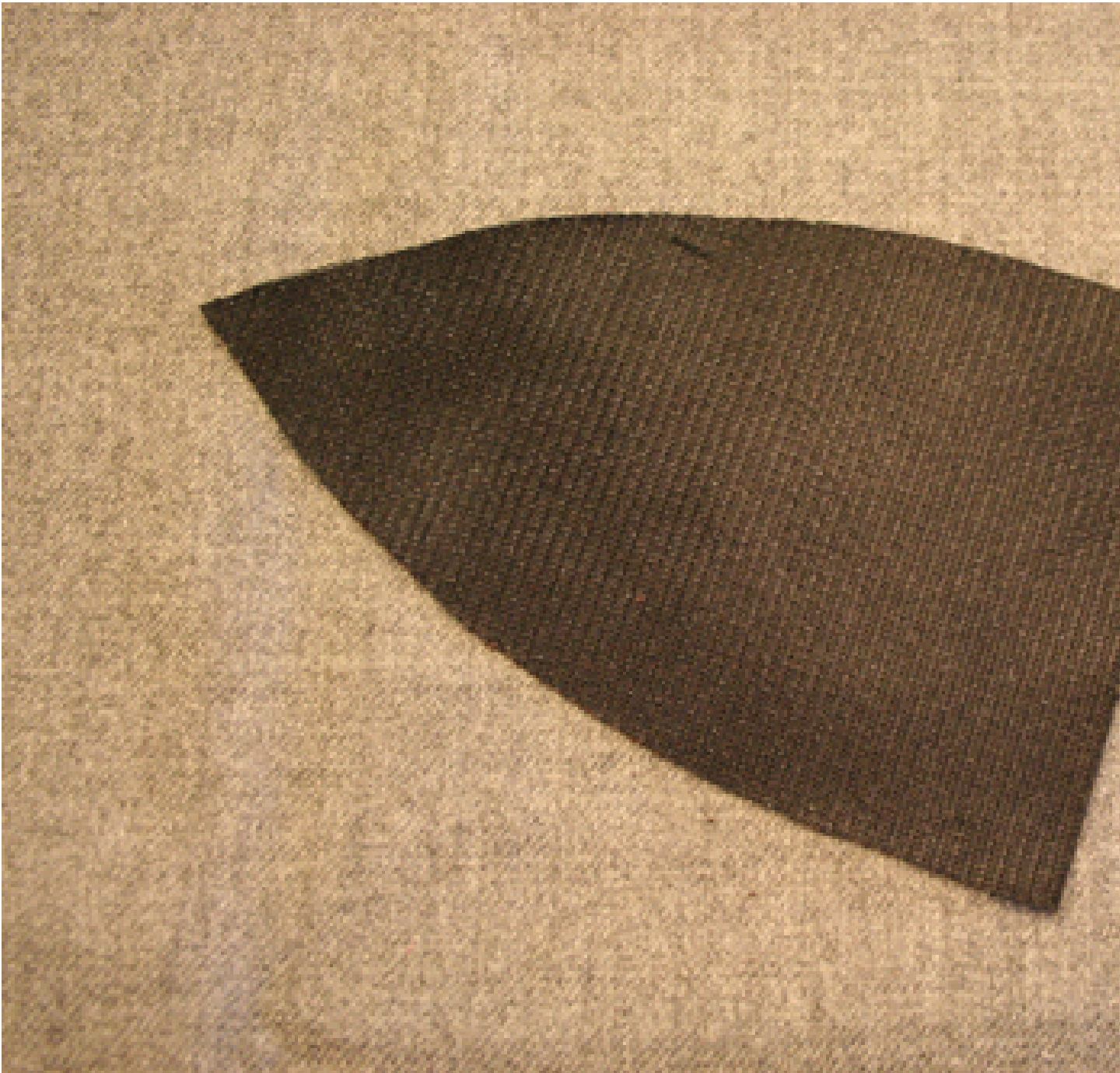
This project is especially fun because you can customize your pattern pieces to fit your own head. For our standard sized hat (24" circumference) we used the following dimensions:

Crown Height: 6"

Panels: 4" X 6" Begin by measuring a 4 × 6 rectangle plus 5/8" seam allowance. From the bottom of the rectangle, taper the sides of the rectangle in to make a pointed piece as shown above.

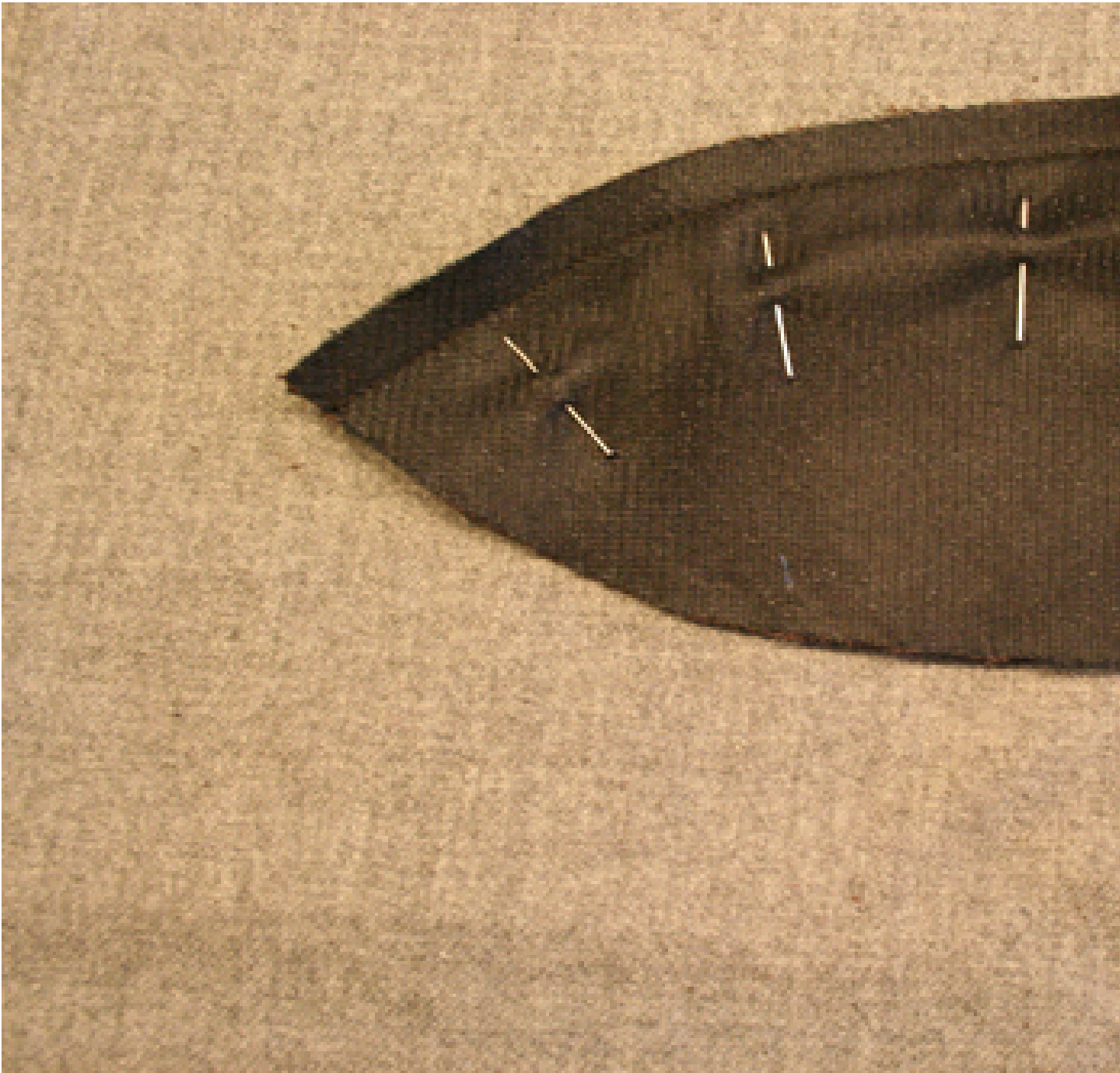
Lay pattern piece on fabric. Cut 6 pieces for crown of headgear.

Step 2 — Fusible Interfacing



Apply medium-heavy weight fusible interfacing to each of the 6 panels. Pictured above, we used black interfacing, in case you can't see it.

Step 3 — Pin & Sew



Pin the side seams of each panel together and sew.

Step 4 — Press



Open the seams of each panel and press the seams.

Step 5 — Top Stitching (optional)



Create a top stitch in a like or contrasting thread color on either side of panels 1/8" away from seam line.

Step 6 — Cut Away Excess Fabric



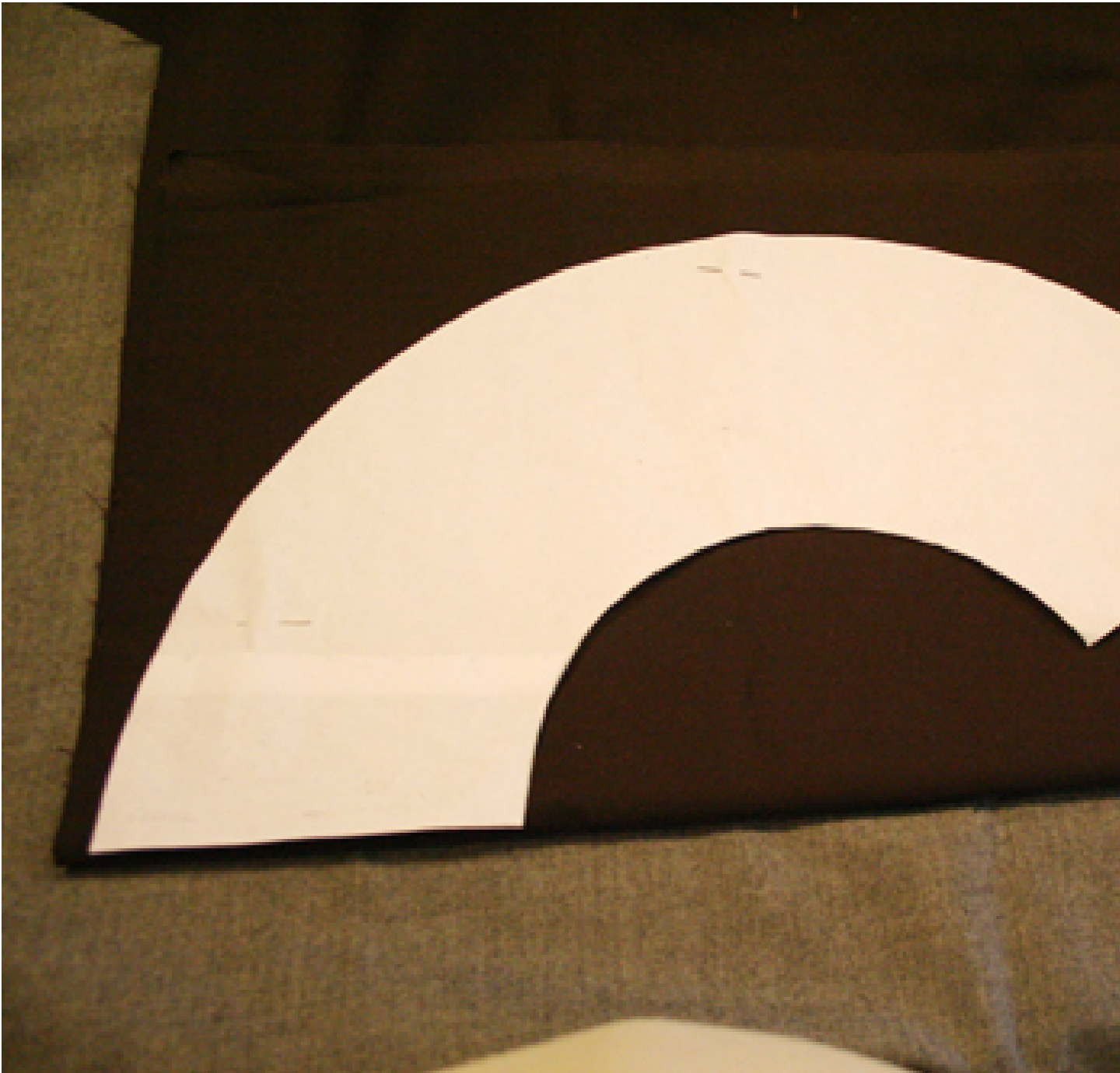
Cut away excess fabric from seam allowance $\hat{A} \frac{1}{4} \hat{a}$.

Step 7 — Lining Your Hat (optional)



Repeat Steps 1,3,4,6 to create the lining. Now we have identical crowns in self and lining.

Step 8 — Hat Brim



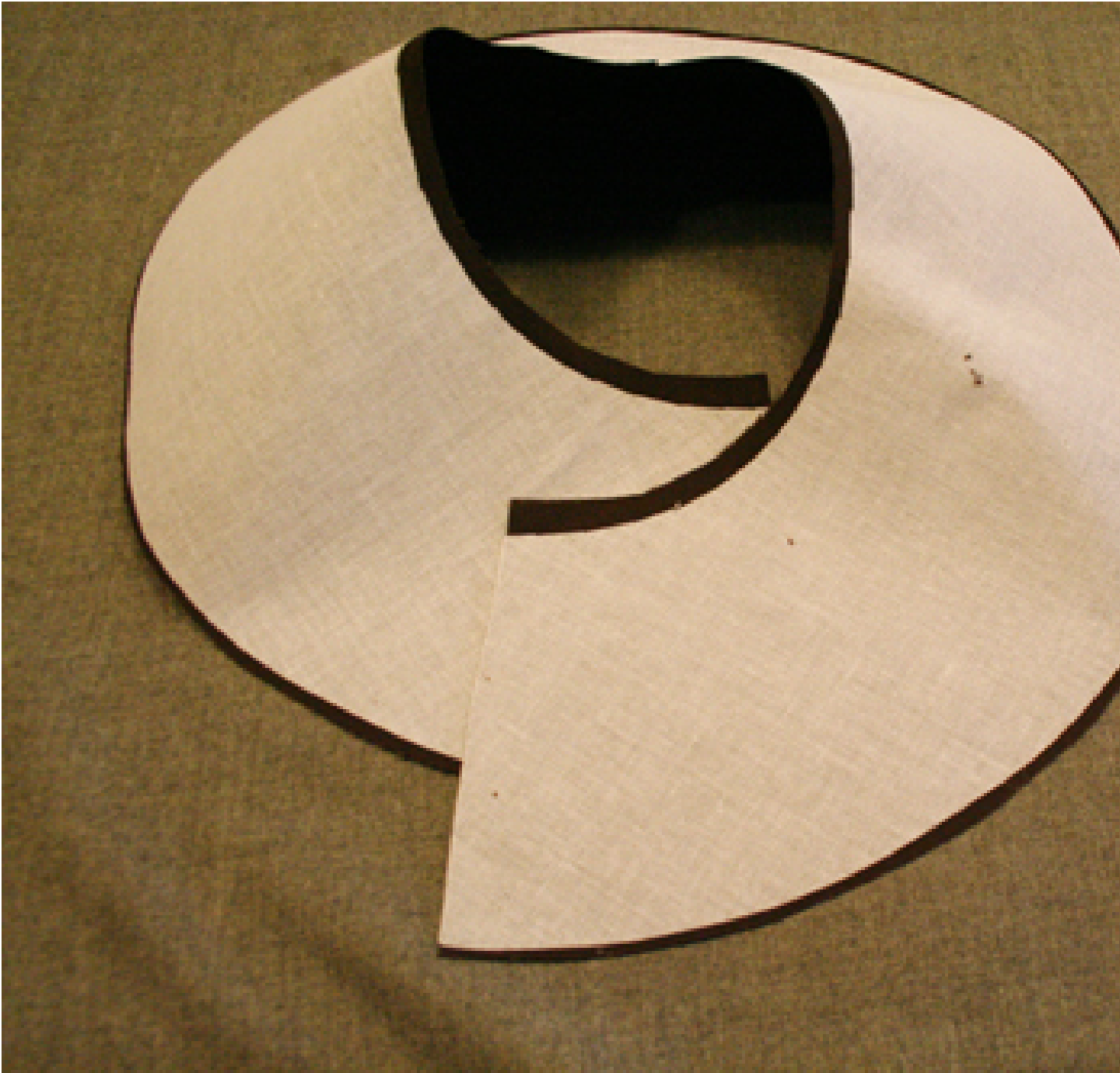
The size of the hat brim is totally up to you, we opted for a wide brim. Remember to measure your crown pieces to determine the circumference of your brim.

Brim length on Center front: 6"

Brim length on Center back 5 1/2"

Once you've created the brim pattern, lay the pattern piece at center front on the fold. Cut 2 pieces.

Step 9 — Interfacing the Brim



Cut 2 pieces of medium-heavy weight fusible from the brim pattern. Press them to the wrong sides of self.

Step 10 — Construct the Hat



Sew center back brim. Pin and sew together brim and crown of the hat in the self and lining.

Step 11 — Hat and Lining



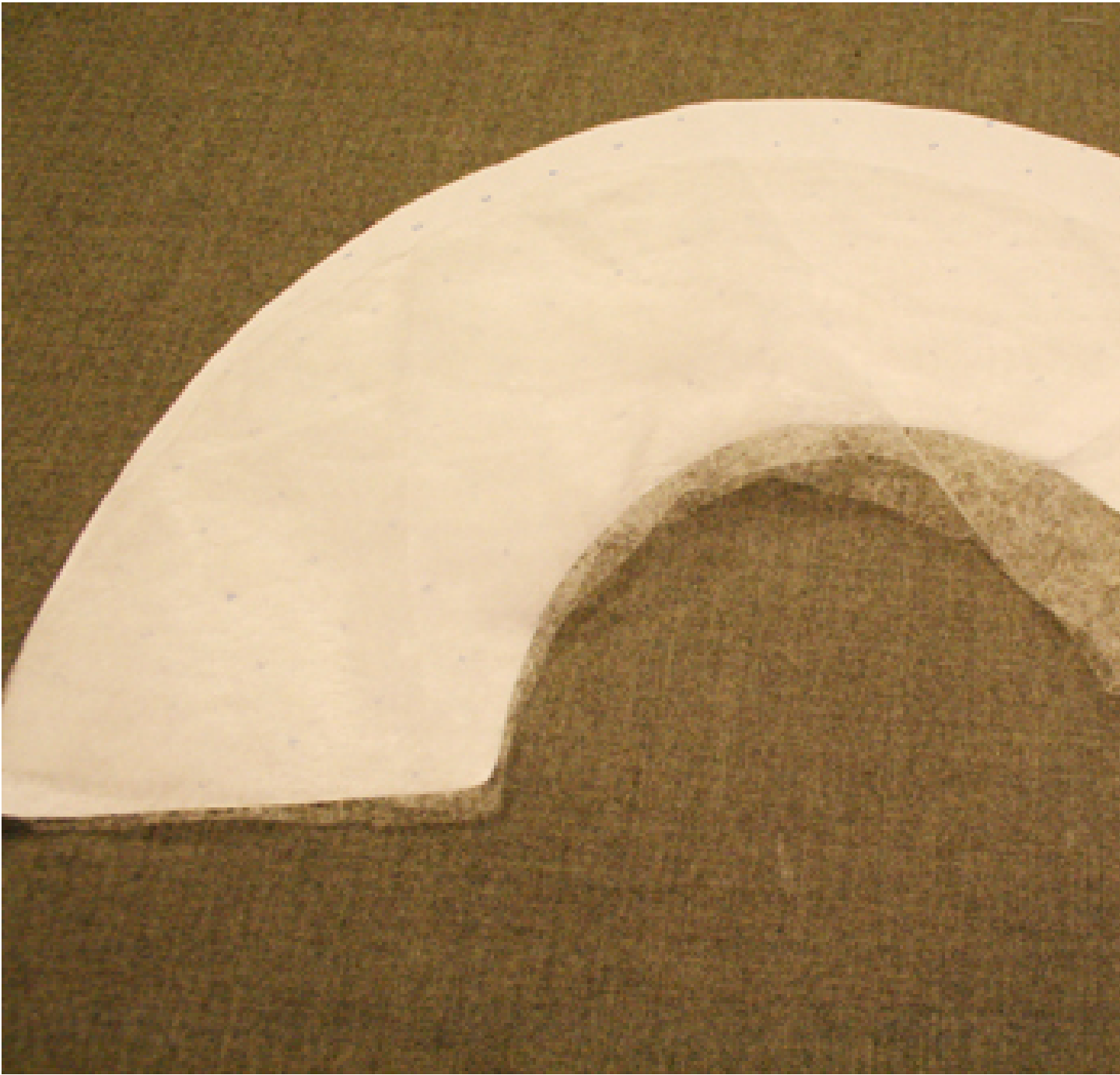
Now we have two identical pieces .

Step 12 — Join Hat & Lining



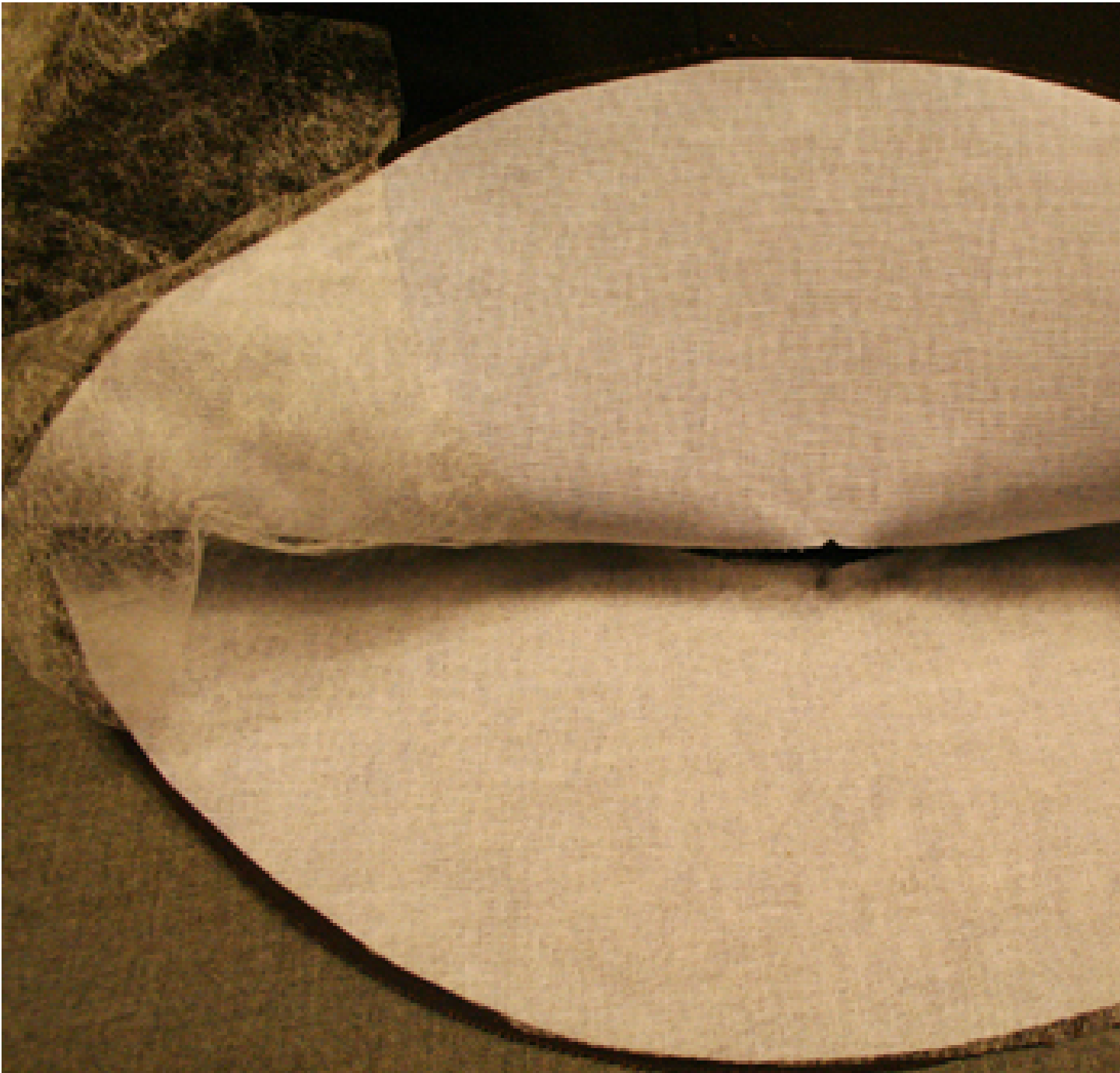
Join self and lining of hat and stitch on top of crown.

Step 13 — More Fusible Interfacing



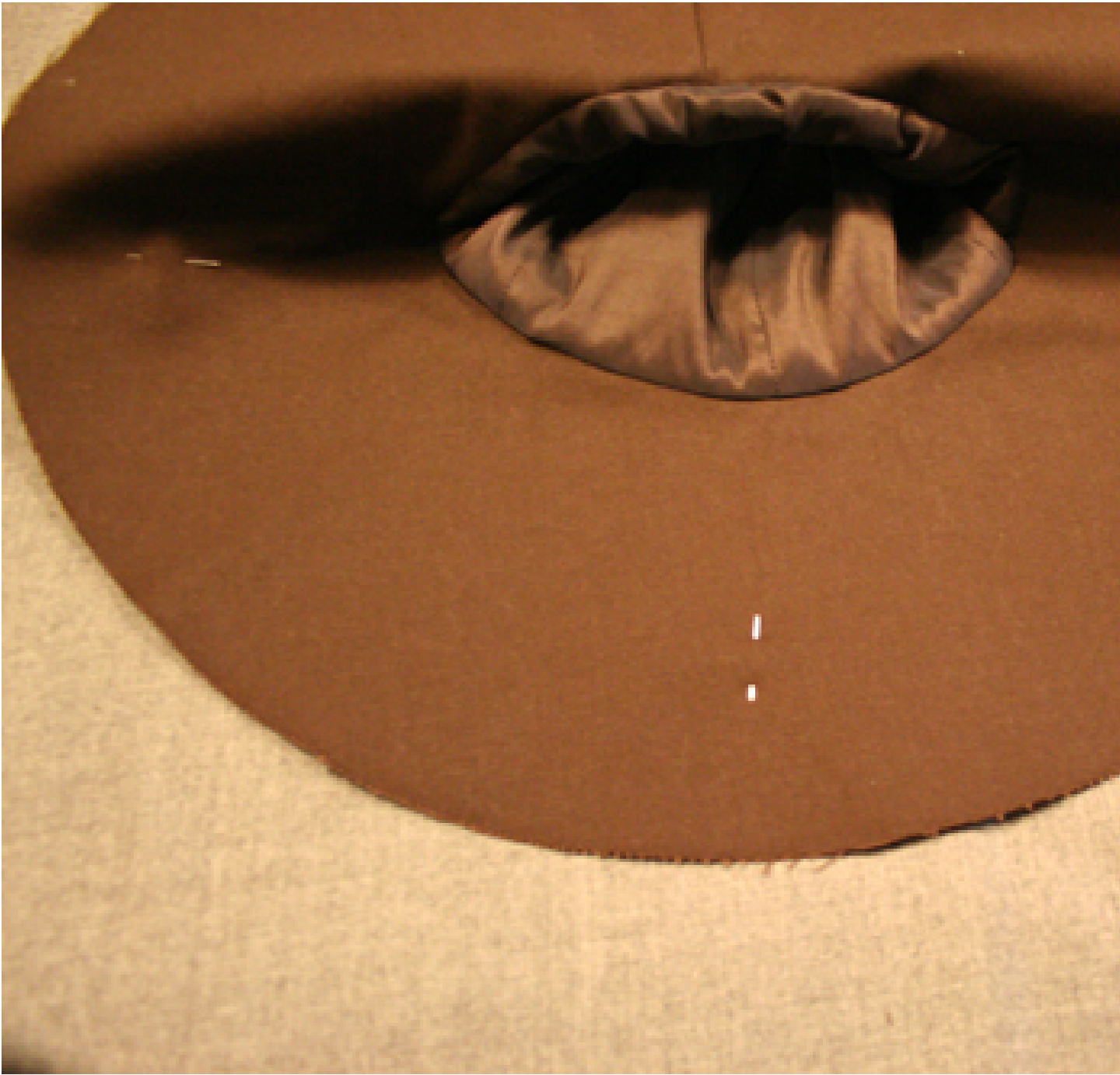
Cut 2 more layers of fusible interfacing from brim pattern to make a nice, stiff brim. Place the fusible between self and lining.

Step 14 — Interfacing the Brim 2



This is how your interfacing will look between the 2 brims.

Step 15 — Cut & Pin



Cut away any excess fusible 1/4" away from brim edge. Pin pieces of brim together and press them so that they are fused together.

Step 16 — Finishing



To finish the edge of your hat brim you can either babylock (overlock) it like we did, use a zig-zag stitch, or get fancy with some embroidery! Have fun!

BurdaStyle

Summer Beach Hat