

# Fitting - Part 1

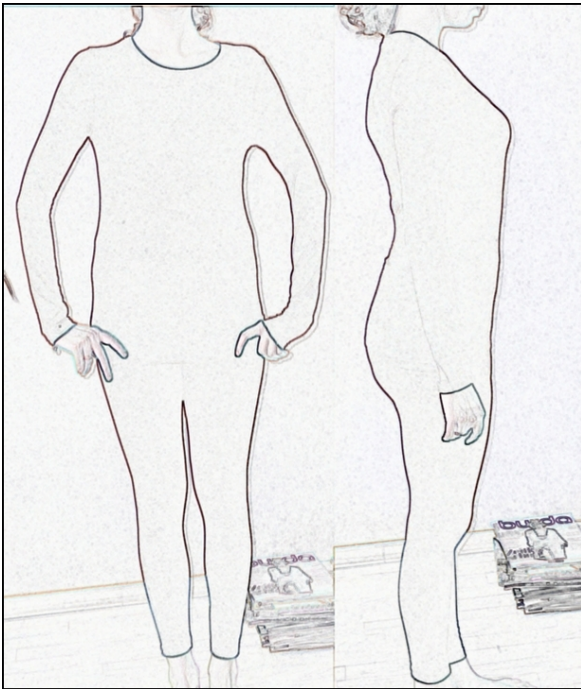
By: Elegant Impressions

<http://www.burdastyle.com/techniques/fitting-part-1>

Burda size		32	34	36	38	40
US Size		0	2	4	6	8
Height	Inches	66 1/4	66 1/4	66 1/4	66 1/4	66 1/4
	CM	168	168	168	168	168
Bust	Inches	30	31 1/5	33	34 3/4	36 1/4
	CM	76	80	86	88	92
Waist	Inches	23	24 1/2	26	27 3/4	29 1/4
	CM	58	62	66	70	74
Hip	Inches	32 1/2	34	35 1/2	37	38 3/4
	CM	78	86	90	94	98
Back Length	Inches	15 3/4	16	16 1/4	16 1/2	16 1/6
	CM	40	40 1/2	41	41 1/2	42
Sleeve length	Inches	23 1/4	23 1/4	23 1/4	23 3/4	23 3/4
	CM	59	59	59	60	60
Neck width	Inches	13	13 1/2	14 1/4	14 1/2	14 3/4
	CM	33	34	35	36	37

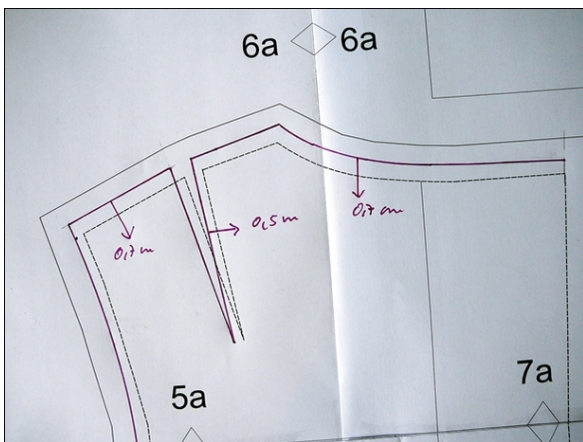
This time I want to demonstrate my way, how I am fitting the 'Nadja' Bodice Pattern. The intro-picture shows my models measurements. First of all it should be determined that my model is not a size 36. Her upper bodice part is size 38: - I have to grade up the pattern to size 38. Second of all my models problem area is her belly: - I have to enlarge the pattern according to this. Please excuse my bad english!

## Step 1 — shape of my model



---

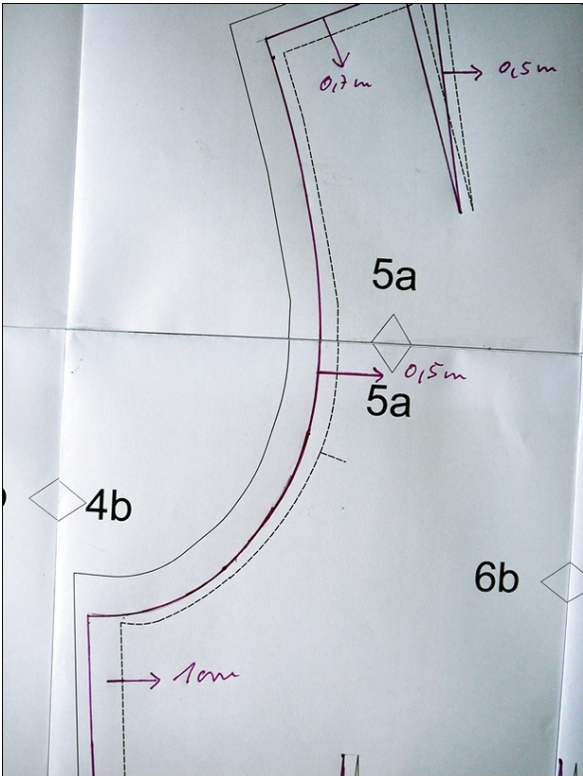
**Step 2 — from size 36 to size 38 - 1.**



You also can look at the tutorial of 'elainemay' :  
<http://www.burdastyle.com/techniques/make-a-pattern-larger-or-smaller>

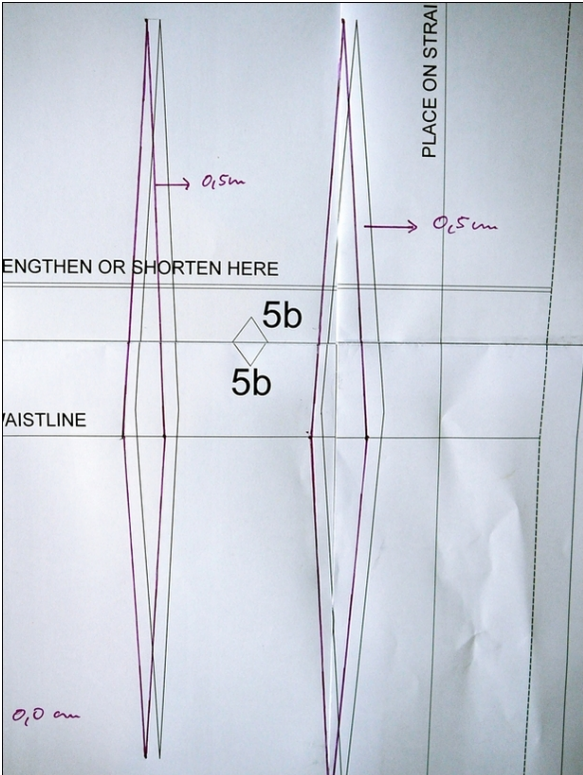
---

**Step 3 — from size 36 to size 38 - 2.**



You also may look at the tutorial of 'elainemay':  
<http://www.burdastyle.com/techniques/make-a-pattern-larger-or-smaller>

**Step 4 — from size 36 to size 38 - 2.**







---

**Step 7 — final result - side view**



---

Step 8 — final result - back view



---

**Step 9 — final result: review of the modified pattern**

