

# The projection of the sewing pattern on the dressdummy, of the princess seam bodice(part 2)

By: Hajnika

<http://www.burdastyle.com/techniques/the-projection-of-the-sewing-pattern-on-the-dressdummy-of-the-princess-seam-bodice>

---



It's very easy and fast! Please, look at my first technique added(part1), pictures 1-15, how you must to drape the dressdummy with craftpaper. Then, look at the picture 17, where you can observe that half part, marked by D. Now, you can use this half part, to make a princess seam bodice. The seam starts at the waist and ends at the shoulder.

---

**Step 1 — step1**



Put back the half part of basic sewing pattern on the dressdummy and block it with adesive tape.

---

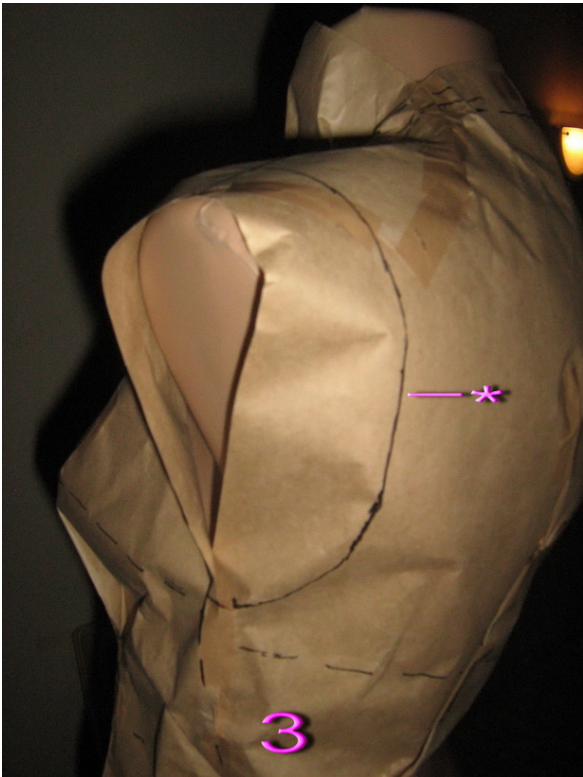
**Step 2 — step2**



Trace the line on the shoulder with a marker and then divide this line in halves. Mark it, because at this point the seam will cross through.

---

### Step 3 — step3



Trace the line of the armhole at the backside.

---

### Step 4 — step4



Trace the line of the armhole on the frontside.

---

**Step 5 — step5**





Pin a tape of fabric on the paper vertically, where will be the line of seam. This is the correct way to block the tape on (look at the picture). There is a pink horizontal line and on that side of tape you have to trace the line. The way of the line of seam goes through the marked point at the shoulder.

---

### Step 6 — step6



On this picture you can see the side of dress dummy, putted the tape of fabric on, correctly.

---

### Step 7 — step7



The tape of fabric putted on at the back side.

---

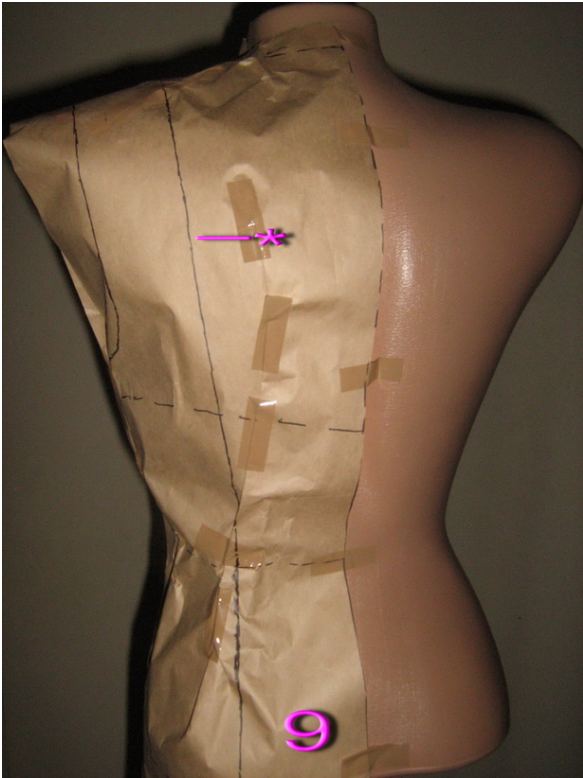
**Step 8 — step8**



Here is the line of seam traced with a marker,at the front side.

---

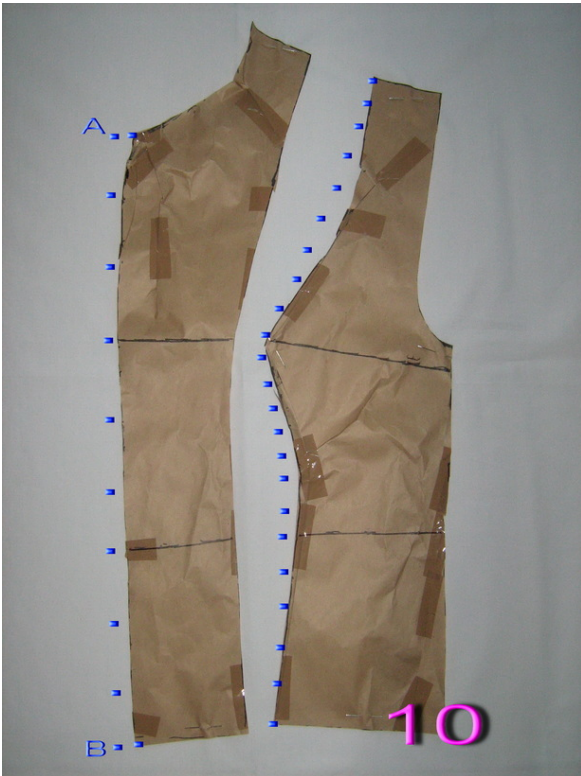
**Step 9 — step9**



The line of seam at the back side.

---

**Step 10 — step10**



These are the pieces of basic pattern of the front side. Put them on the paper, block them, then trace the new lines, as in the picture. That line between A and B points are moved with 0,5 inch and you must to trace the right line.

---

### Step 11 — step11





At the back side you have to trace the new lines too,like on the picture.

---

**BurdaStyle**

*The projection of the sewing pattern on the dressdummy,of the princess seam bodice(part 2)*