

The projection of sewing patterns on the dressdummy

By: Hajnika

<http://www.burdastyle.com/techniques/the-projection-of-sewing-patterns-on-the-dressdummy>



On the next pictures I will show you how I drafted my sewing patterns on my dressdummy for that model of dress. This pattern you can use for the clothes from stretch materials, knitted fabrics only, because it is a very simple sewing pattern without darts. From that sewing pattern you can make dresses or tops with mini raglan sleeves. See, step-by-step procedure how easy it is to make sewing patterns on the dressdummy and the clothes which you will make from that pattern, fit you perfectly. I suggest that you make your own dressdummy from your body. The procedure, how to make your own dressdummy, you'll find out by this link: www.taunton.com/threads/pages/t00002.asp

Step 1 — Step-1



You will take, two big pieces of craft paper, for a length equal with the distance between the top of the shoulders and the hip. The two pieces of paper will make the front and the back side of the basic sewing pattern, and on the line of the shoulders the two pieces of paper will be attached one to the other by adhesive tape.

Step 2 — Step-2



On the side, the two pieces of paper, will wrap the body of the dressform by superpositioning the two pieces of paper, which will be fixed then with adhesive tape.

Step 3 — Step-3



Immediately then, you will adjust the paper making plies. The plies will be fixed by adhesive tape. Here you have into the picture the front side paper adjusted at the waist.

Step 4 — Step-4



Here you have into the picture the front side paper adjusted around the neck.

Step 5 — Step-5



The same way,you have to adjust ,the back side paper.

Step 6 — Step-6



Around the waist you'll put a tape of fabric, perfectly horizontally and above you'll mark (trace) a line all around.

Step 7 — Step-7



The same way, you have to proceed on the top of the bust line, marking the line by the help of a tape.

Step 8 — Step-8



The same way mark the hip line.

Step 9 — Step-9



Now, on the back side paper you will mark a vertically line, along the vertebrally column, dividing the surface into symmetrical parts.

Step 10 — Step-10



From the opposite sides of the neck line (by lateral side) you can see the specific points marked (by me). Here you can see the one point on the face part.

Step 11 — Step-11



Here you can see the other point, marked by me on the back side.

Step 12 — Step-12



You'll mark starting that points two lines, which are coming out obliquely under the armpits.

Step 13 — Step-13



You can utilise the same tape of fabric,when you mark this line.You can see the vertically line too,under the armpit ,marked by me.

Step 14 — Step-14



Immediately then,you will cut with scissors all the vertically line at the face part,opening the carcasse of the craft paper .Into the picture you can observe ,how precisely you can see the line of attaching sleeves ,and also the line of the sleeves termination

Step 15 — Step-15



On this picture you can observe that the opened carcasse is keeping the shape and volume of that body.

Step 16 — Step-16



On this picture is showing the two separates halves of the body.

Step 17 — Step-17



A=the back of basic pattern B=the front of the basic pattern C=the basic pattern of the sleeves
D=the one half of the body ...and the rest of papers

Step 18 — Step-18



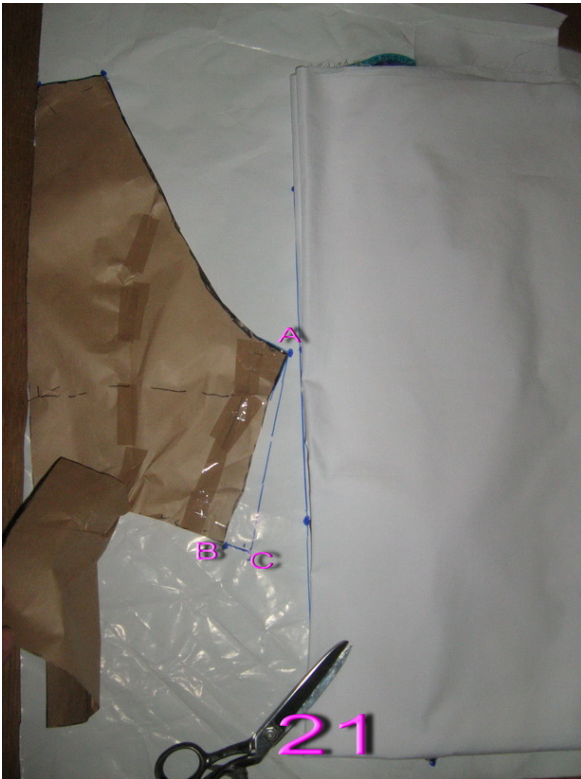
Now ,you'll take a big piece of paper, on which one you'll draw the final patterns. The pattern you have seen till now, it's only the base of the final pattern. A=face of pattern B=back of pattern C=sleeves pattern

Step 19 — Step-19



THE FACE OF THE PATTERN: You have to take the blue point of the bust line, as starting point of the final pattern.

Step 20 — Step-20



THE BACK OF THE PATTERN: You have to cut the back of the basic pattern at the waistline. You can see A,B,C points and also you can observe ,that the waistline was elongated by 0,5 inch ,from B to C point. Now you can trace a line from A to C.This is the new line of the side of the back,which is equal with the side of the front part.

Step 22 — Step-22



Put back on the paper the hip part, which was cut down from the base pattern. You can see the corner down, which is marked by A, is touching to the side of the paper and the up corner on the right side is touching to the B point. Measure 3,5 inch in the upper side from point A and mark that point. Through this point trace a horizontally line, this will be the lower side of the back pattern. There is the front part on the picture 20 and you can see GE line. Mark this distance between G and E on the side of hip part of the back side. This will be B and C points. So $GE=BC$.

Step 23 — Step 23



Now measure 0,5 inch from C to D .Mark D point,because this will be the cross point of the new lines.

Step 24 — Step-24



Trace the new line of the side of the hip from the waistline. At this picture you can see A and D points. This line between these points is equal with the dimension from the hip side of the front part (GE).

Step 25 — Step-25



Here you can see the new line of the side, marked by red star.

Step 26 — Step-26



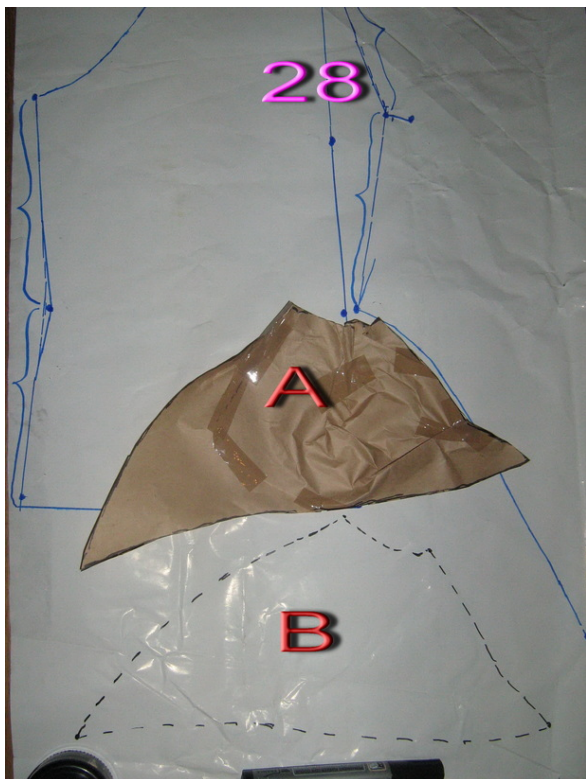
On the left part you can see the the new sewing pattern of the back part.

Step 27 — Step-27



Here is the new sewing pattern of the front part. The side bords of the front and back pattern must be equals.

Step 28 — Step-28



Here you can see the base pattern of the sleeves marked by A and the copy of the sleeves pattern, marked by B.

Step 29 — Step-29

