

# Alexander Blouse

By: BurdaStyle

<http://www.burdastyle.com/projects/alexander-blouse>

---



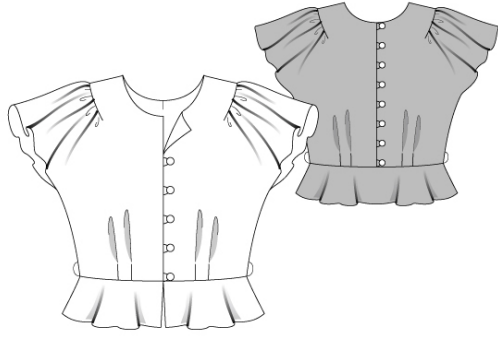
This blouse is truly a work of art and quite a unique pattern. The ruffled sleeves and rippling hemline are created by various darts and gathers while the front and back openings both close with a sweet line of buttons. We made our Alexander blouse from black & white polka-dot silk charmeuse with a matching belt (included in pattern).

## Materials

Sizes 32-44: 1 3/4 yards (1.5 meters) self, 90 x 50cm interfacing, 13 buttons

---

## Step 1 — PATTERN



## PATTERN

1 Front piece 2x

2 Back piece (to be glued/taped to piece 1)

3 Front peplum 2x

4 Back peplum 1x

5 Front facing 2x

6 Back facing 2x

7 Belt 2x

8 Loop 1x

Fabrics: Light cotton fabric, crepe fabric and chiffon fabric

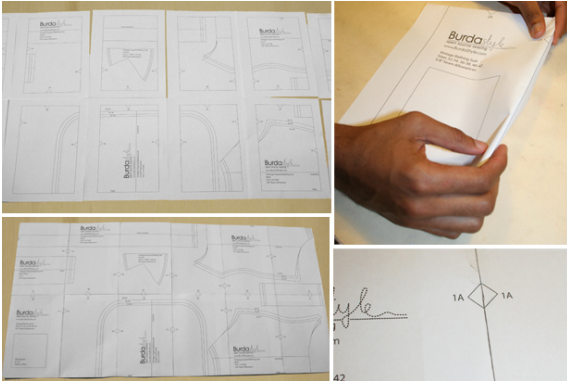
The patterns can be printed out at the copy shop. If you decide to print them at home, follow these instructions:

Paper cut for ANSI A (German DIN A4) prints:

The patterns are printed out on 21 sheets with a thin frame. Wait until all sheets are printed out. Arrange the sheets so that they fit together (see additional page with the overview of the prints). Fold the single sheets on the upper and right edge along the thin frame lines. Begin with the left lower sheet and then tape the frame lines together precisely.

---

## Step 2 — ADJUST PATTERN SIZES



## ADJUST PATTERN SIZES

Select your size according to the Burda-dimension table: dresses, blouses, jackets and coats according to the bust size, trousers and skirts according to the hip width. Change the pattern to fit your measurements if they deviate from the Burda-size chart.

Cut out the pattern pieces 1 to 8 according to your size.

Sizes 2 to 12 (EU 34 to 44): The loops on pieces 1 and 2 correspond to size 0 (EU 32). For all other sizes mark the cross lines according to your size: The top loop with the same space to the neckline as for size 0. The bottom loop position is the same for all sizes. Distribute the other loops equally, in between the top and bottom one.

Important: Before cutting out the fabric pieces, tape pattern pieces 1 and 2 together along the top sleeve edges.

Refer to our [â—Adjust patterns for mixed sizesâ—](#) technique.

## LENGTHENING OR SHORTENING THE PATTERN PIECES

Our pattern is calculated for a height of 5â— 6â— (168 cm). If you are taller or shorter, you can adjust the pattern pieces along the lines marked "lengthen or shorten here". This way the proper fit is maintained. Always adjust all pattern pieces along the same line to the same degree.

How to lengthen and shorten pattern pieces:

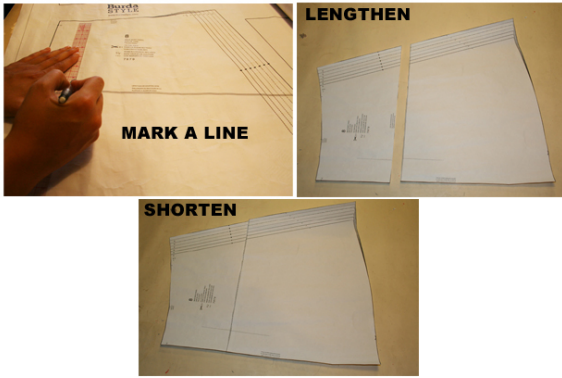
Cut the pattern pieces along the marked lines

To lengthen, slide the two halves of the pattern piece as far apart as necessary.

To shorten, overlap the two halves of the pattern piece as far as necessary. Blend the side edges.

---

## Step 3 — CUTTING OUT



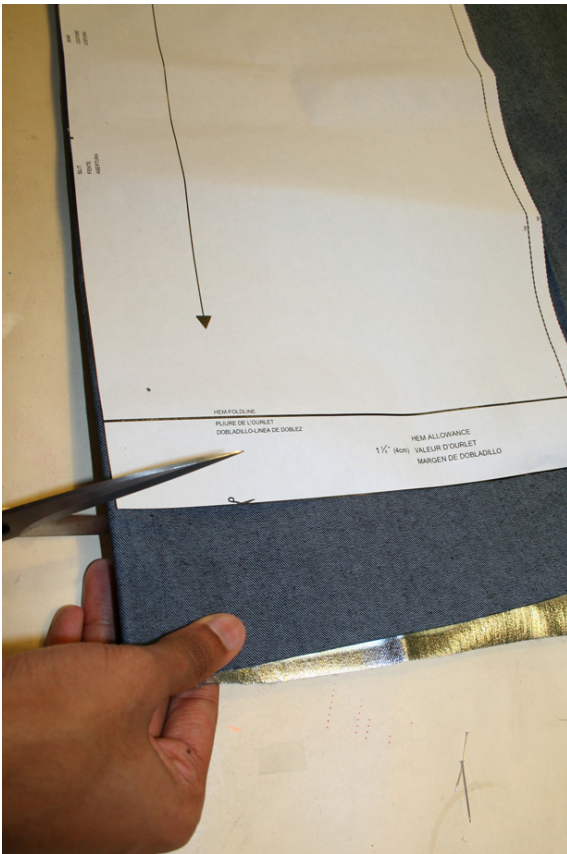
## CUTTING OUT

**FOLD** (↔) means: Cut on the fold, the fold being the center of the pattern piece, but never a cut edge or seam. The piece should be cut double, with the fold line forming the center line. Pattern pieces that are outlined with a broken line in the cutting diagrams are to be placed face down on the fabric. The cutting diagrams on the pattern sheet show how the pattern pieces should be placed on the fabric.

The cutting diagrams show the placement of the pattern on the fabric.

For a single layer of fabric, the pattern pieces are pinned to the right side. For double layers of fabric, the right sides are facing and the pattern pieces are pinned to the wrong side. The pattern pieces that are shown extending over the fold of the fabric in the cutting diagram should be cut last from a single layer of fabric.

## Step 4 — SEAM AND HEMLINE ALLOWANCES



SEAM AND HEMLINE ALLOWANCES are included on an average:

1 5/8" (4 cm) for hem, 5/8" (1.5 cm) for all edges and stitches. Using BURDA copying paper, transfer the lines and signs of the pattern onto the wrong side of the fabric. Instructions can be found in the packaging.

#### INTERFACING

Cut out the interfacing pieces and press onto the wrong side of the fabric.

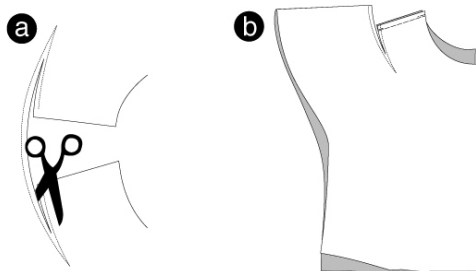
#### Sewing

While sewing, the right sides of the fabric are facing.

Transfer all lines of the pattern onto the right side of the fabric using chalk.

---

### Step 5 — BLOUSE



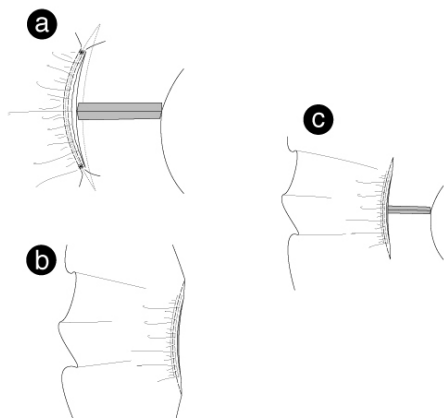
#### BLOUSE

Cut in front and back pieces between the dart lines to within 1" (3 cm) of the tip of the dart. (a)

Stitch front and back together at shoulders, right sides facing. Stitch shoulder seams from the neckline to the shoulder edge (seam number 1). Neaten allowances and press open. (b) Staystitch neck edge of blouse.

---

### Step 6 — SLEEVE GATHERS



To gather the curve of the sleeve along the shoulder line, with right side of fabric facing up, stitch a basting stitch along the seamline and again 1/4" (6mm) away in the seam allowance from \* to \*.

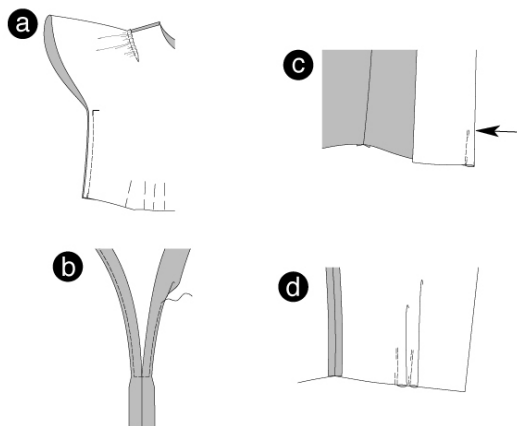
With right sides facing, pin the edge to be gathered to the shoulder edge matching the center of the sleeve (the taped line on the paper pattern piece) to the shoulder seam.

Draw up the bobbin threads and adjust the gathers evenly, secure the thread ends by winding them in a figure 8 around a pin. (a) Pin the remaining shoulder seam out to the dart points and stitch from one dart point, through the gathers, to the other dart point. Knot the thread ends. (b)

Trim allowances, neaten and press towards the neckline, being careful not to flatten the gathers. © Remove basting threads.

---

## Step 7 — SIDE SEAMS / SLEEVE HEM / PLEATS



Stitch front and back together at sides from the crossline (seam number 2) to the bottom. Secure seam ends. Neaten allowances and press open. (a)

### SLEEVE HEM

Fold the allowances of the bottom sleeve edges inside, press. Fold again and pin. Topstitch allowances. (b)

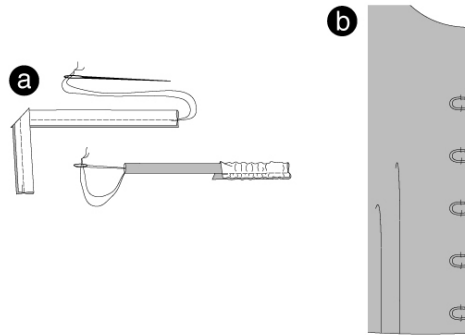
### PLEATS

To make pleats in the front, fold along the pleat lines as marked with arrows. On the wrong side, stitch along the lines until the pleat

marking (arrow) is reached. Secure seam ends. © Press the pleats towards the center front (d). Stitch the pleats on the back piece in the same manner and press towards the center back.

---

## Step 8 — LOOPS



### LOOPS

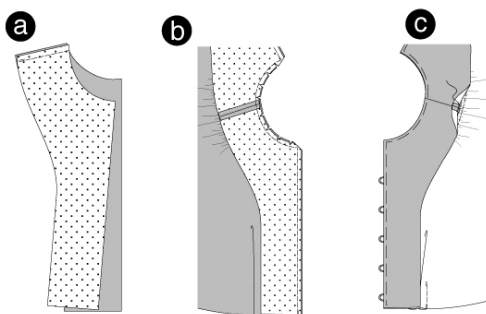
Tip: To make it easy to turn the loops (piece 8) inside out after stitching, cut the strip into two pieces.

Fold the strips lengthwise, right sides facing. Stitch  $\frac{1}{4}$ " (0.5 cm) from the fold line. Trim allowances. Put the thread ends through a needle and knot. Push the needle, the eye first, through the loop to turn right side out. Cut the strip into 13 equal pieces. Each loop should measure 2" (5.5 cm). (a)

Fold the loops and position them onto the markings along the right front edge and left back edge of the blouse. Baste in place. The size of the loops has to match the button size. (b)

---

## Step 9 — FACING



### FACING

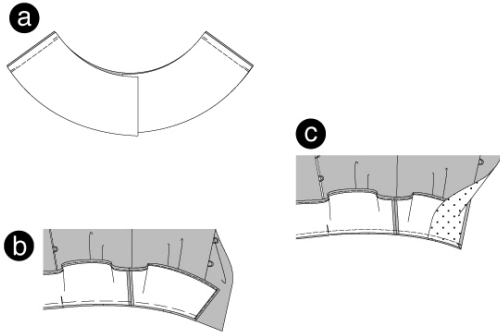
Stitch front and back facing pieces together at shoulder seams (seam number 3). Press allowances open and neaten inner facing edges. (a)

Pin the facing onto the front and back blouse edges and neckline, right sides facing, matching shoulder seams. Stitch, enclosing the

loops. Trim allowances and clip the curves. Cut the corners at a slant. Fold the facing inside, pin and press. (b) Slip stitch the facing to the sleeve allowances. ©

---

## Step 10 — PEPLUM



### PEPLUM

12 Stitch front and back peplums together at the side seams (seam number 4), right sides facing. Neaten allowances and press open. To hem the peplum, fold the allowances of the bottom peplum edges inside, press. Fold again and pin. Topstitch allowances.

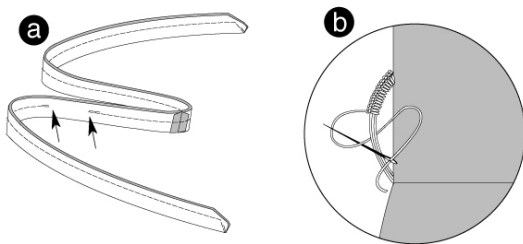
13 Position the peplum onto the bottom blouse edge (seam number 5) matching side seams, and pin. The back pieces meet at the center back of the peplum.

Position the front facing over the front peplum and pin. Stitch bottom facing edges and peplum. Trim allowances and neaten (13a). Fold the facing inside and press. Press peplum seam allowances up.

Apply **BUTTONS** that correspond to the loops on the left front piece and the right back piece.

---

## Step 11 — BELT



### BELT

Position pieces together, right sides facing. Stitch center seam. Press allowances open.

14 Fold the belt lengthwise, right sides facing. Position the edges together and stitch; leaving an opening to turn the belt right side out. Secure seam ends. Turn belt. Pin edges and press. Slip stitch the opening closed.

15 Create loops made out of thread. Position the loops on the side seams. Adjust the loops to the belt width. Pull belt through the loops.

---

**BurdaStyle**

*Alexander Blouse*