

Jenny Dress

By: BurdaStyle

<http://www.burdastyle.com/projects/jenny-dress>

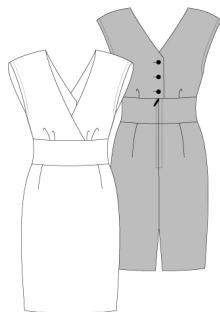


Trend Watch: Florals. The Jenny dress has a subtle front overlap and a soft, sloped shoulder which flatters any woman's silhouette. 3 back buttons add room for a contrasting surprise element. Make your own Jenny variation dress in a bright & bold floral print like ours, or in a solid gem tone for evening. The Jenny variation pattern includes 3 high-waist skirt patterns (including the Jenny high-waist skirt with bow) and a dress option! The basic skirt pattern (variation A) could be used to draft virtually any skirt pattern off of- seeing that it has front and back darts to work with. You will keep this pattern forever. *Pattern includes: 3 skirt variations, 1 dress variation

Materials

Fabrics: Light wool fabrics Other: Interfacing 36" x 16" (EU 90 x 40 cm) Zipper 12" (EU 30 cm) 3 buttons

Step 1 — PATTERN



Pattern

- 1 Front skirt panel 1x
- 2 Back skirt panel 2x
- 3 Front waistband 2x
- 4 Back waistband 4x
- 7 Front piece 2x
- 8 Back piece 2x
- 9 Front placket 2x
- 10 Back placket 2x

Fabrics: Light wool fabrics

Other: Interfacing 36" x 16" (EU 90 x 40 cm)

Zipper 12" (EU 30 cm)

The patterns can be printed out at the copy shop. If you decide to print them at home, follow these instructions:

Paper cut for ANSI A (German DIN A4) prints:

The patterns are printed out on 27 sheets with a thin frame. Wait until all sheets are printed out. Arrange the sheets so that they fit together (see additional page with the overview of the prints). Fold the single sheets on the upper and right edge along the thin frame lines. Begin with the left lower sheet and then tape the frame lines together precisely.

Disregard steps 4, 5, 8, 9, 11 and 12 ON PRINTED INSTRUCTIONS

THE INSTRUCTIONS BELOW ARE CORRECT FOR THE JENNY DRESS.

Step 2 — ADJUST PATTERN SIZES



ADJUST PATTERN SIZES

Select your size according to the Burda-dimension table: dresses, blouses, jackets and coats according to the bust size, trousers and skirts according to the hip width. Change the pattern to fit your measurements if they deviate from the Burda-size chart. Cut out the pattern pieces according to your size.

Refer to our "Adjust patterns for mixed sizes" technique.

LENGTHENING OR SHORTENING THE PATTERN PIECES

Our pattern is calculated for a height of 5'6" (168 cm). If you are taller or shorter, you can adjust the pattern pieces along the lines marked "lengthen or shorten here". This way the proper fit is maintained. Always adjust all pattern pieces along the same line to the same degree.

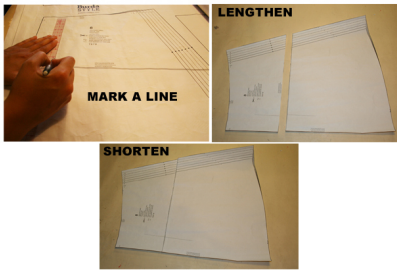
How to lengthen and shorten pattern pieces:

Cut the pattern pieces along the marked lines

To lengthen, slide the two halves of the pattern piece as far apart as necessary.

To shorten, overlap the two halves of the pattern piece as far as necessary. Blend the side edges.

Step 3 — CUTTING OUT



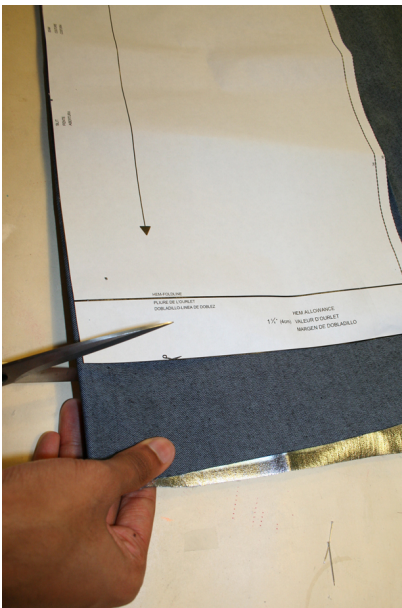
CUTTING OUT

FOLD (â' â' â' â') means: Cut on the fold, the fold being the center of the pattern piece, but never a cut edge or seam. The piece should be cut double, with the fold line forming the center line. Pattern pieces that are outlined with a broken line in the cutting diagrams are to be placed face down on the fabric. The cutting diagrams on the pattern sheet show how the pattern pieces should be placed on the fabric.

The cutting diagrams show the placement of the pattern on the fabric.

For a single layer of fabric, the pattern pieces are pinned to the right side. For double layers of fabric, the right sides are facing and the pattern pieces are pinned to the wrong side. The pattern pieces that are shown extending over the fold of the fabric in the cutting diagram should be cut last from a single layer of fabric.

Step 4 — SEAM & HEM ALLOWANCES



Disregard steps 4, 5, 8, 9, 11 and 12 ON ORIGINAL PRINTED INSTRUCTIONS

INSTRUCTIONS BELOW ARE CORRECT FOR THE JENNY DRESS VARIATION.

SEAM AND HEMLINE ALLOWANCES are included on an average:

1 5/8—8" (4 cm) for hem, 5/8â' (1.5 cm) for all edges and stitches. Using BURDA copying paper, transfer the lines and signs of the pattern onto the wrong side of the fabric. Instructions can be found in the packaging.

LINING

Cut the lining according to pattern pieces 1 and 2. See cutting diagram.

INTERFACING

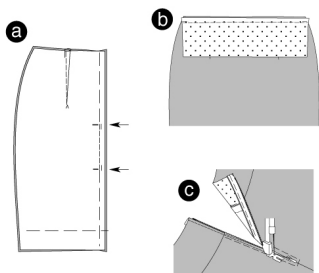
Cut out the interfacing pieces and press onto the wrong side of the fabric.

Sewing

While sewing, the right sides of the fabric are facing.

Transfer all lines of the pattern onto the right side of the fabric using chalk.

Step 5 — SKIRT



SKIRT

Pin the darts on front and back skirt panel. Stitch to a point. Knot thread ends. Press the darts towards the center of front and back skirt pieces.

CENTER BACK SEAM / SLIT

Position the back skirt panels together, right sides facing. Pin center seam. Stitch center seam between slit markings. Secure seam ends. Keep slit pinned. Neaten allowances and remove the pins. (a)

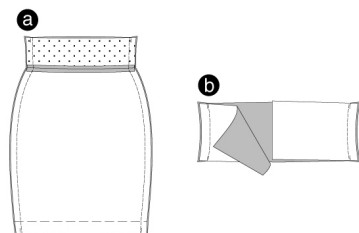
WAISTBAND

Position the interfaced front waistband piece and the front skirt panel together, right sides facing. When doing so, slightly stretch the waistband. Stitch. In the same way, stitch the interfaced back waistband piece on the back skirt panel (seam number 3). Press allowances apart. (b)

ZIPPER

Position the zipper under the slit edge in a way that the little teeth are hidden. Stitch the zipper using a zipper foot for your sewing machine. ©

Step 6 — SIDE SEAMS

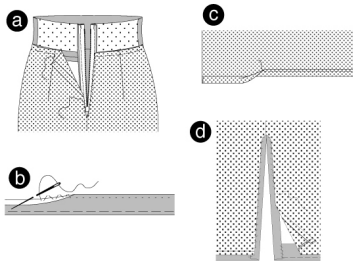


SIDE SEAMS

Position the front and back skirt panels together. Pin side seams (seam numbers 1, 2). The seam lines of the back and front waistbands meet. Stitch. Trim allowances and press apart. (a)

Position the back and front waistband pieces together, right sides facing. Stitch side seams. Press allowances apart. (b)

Step 7 — LINING



LINING

Stitch the darts, center back seam and side seams of the lining skirt as done to the fabric skirt. Press the opening allowances to the inside.

Position the lining on the skirt, wrong sides facing. Side seams meet. Position the top edges of skirt and lining together. Pin. By hand, sew the opening edges on the zipper strips. (a)

HEMLINE

Open slit allowances.

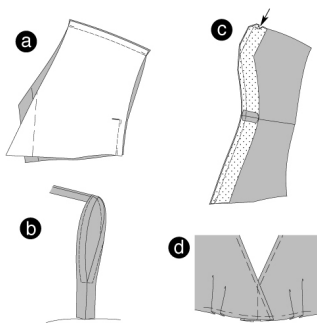
Neaten hemline. Fold and press. Sew the hemline by hand. Turn slit allowances and stitch onto the hemline. (b)

LINING HEMLINE

Open allowances

Turn the hemline and press. Fold and pin. Topstitch hemline narrowly. © Turn allowances inside and press. Stitch slit edges on the slit allowances (d).

Step 8 — DRESS / TOP PIECE



DRESS

Top piece

Position the front and back pieces together, right sides facing. Pin shoulder seams (seam number 4). Ease the back shoulder edge.

Stitch. Stitch side seams from the cross line to the bottom (seam number 7). Secure seam ends. Neaten allowances. (a)

Press allowances apart. Fold the allowances along the armholes inside and press. Stitch the armhole edges $\hat{A}1\frac{1}{2}\hat{a}$ ' (1 cm) wide, enclosing the allowances. Position the front and back plackets together, right sides facing. Stitch shoulder seams (seam number 5). Press allowances apart. (b)

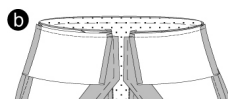
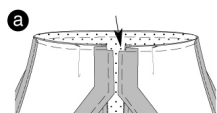
Position the plackets on the armhole edges (seam number 6), right sides facing. Shoulder seams meet. Stitch plackets from the bottom to the center of the back piece. Secure seam ends. Trim allowances. Cut the corners at a slant. Snip in the center back, close to the seam line of the center back (arrow). ©

Fold the plackets inside and pin. Press. Sew the plackets by hand onto the allowances of the shoulder seams.

Work BUTTON HOLES into the left back piece; the top button hole with the same space to the top edge for sizes 2 to 12 (EU 34 to 44). Do the same with the bottom button hole. Position the third button hole in the center of the top and bottom one.

From the right fabric side, position the pleats on front and back piece according to the arrows. Position the front pieces together, centers meeting. Position the bottom edges together and pin. (d)

Step 9 — HEMLINE / LINING HEMLINE / BUTTONS



Position the top piece onto the top waistband edge (seam number 8), right sides facing and centers meeting. The opening edges on the back overlap at the center back (arrow). Stretch the waistband to the width of the top piece and pin. (a)

DOUBLE WAISTBAND

Position the non-interfaced waistband piece onto the already stitched waistband, right sides facing. Side seams meet. Fold the allowances along the back waistband edges inside. Stretch the top waistband edges slightly, pin and stitch. Trim allowances. (b)

Turn the waistband inside and press. Neaten bottom waistband edge. Fold the waistband over the seam line and pin. Sew the back waistband edges by hand onto the zipper straps. Stitch along the waistband seam line, onto the right side of the fabric, thereby stretching the waistband slightly and enclosing the inner waistband.

Stitch HEMLINE according to Step 7 b

Stitch LINING HEMLINE according to step 7 c, stitch slit edges according to 7 d.

Apply BUTTONS onto the center back of the right back piece; that correspond with the button holes.