

Nico

By: BurdaStyle

<http://www.burdastyle.com/projects/nico>



The Nico trench coat is a sweet, swinging year round staple for any occasion. The hem is gathered for fullness and flair, the belt option makes room for customized color combos while contributing to a fitted silhouette. The wide sleeve cuffs are adorned with a tab & button. Deep pockets provide warmth & a place to store your necessities.

Materials

3 3/4 yards of navy washed silk, 1 3/4 yards of lining, interfacing, 3 buttons & a belt clasp.

Step 1 — PATTERN



1 Center front piece 4x

2 Side front piece 2x

3 Back piece 1x

4 Front placket 2x

5 Back placket 1x

6 Under collar 1x

7 Top collar 1x

8 Sleeve 2x

9 Sleeve cuff 2x

10 Sleeve strap 2x

11 Front skirt panel 2x

12 Back skirt panel 2x

13 Front placket 2x

14 Pocket pouch 2x

15 Loops 1x

16 Belt 1x

Lining pieces:

17 Side front piece 2x

18 back piece 1x

19 Front skirt panel 2x

20 Back skirt panel 1x

Fabrics: Poplin, gabardine

Burda sizes: 2 to 14 (EU 34 to 46)

The patterns can be printed out at the copy shop. If you decide to print them at home, follow the instructions:

Paper cut for ANSI A (German DIN A4) prints:

The patterns are printed out on 72 sheets with a thin frame. Wait until all sheets are printed out. Arrange the sheets so that they fit together (see additional page with the overview of the prints). Fold the single sheets on the upper and right edge along the thin frame lines. Begin with the left lower sheet and then tape the frame lines together precisely.

Step 2 — ADJUST PATTERN SIZES



Select your size according to the Burda-dimension table: dresses, blouses, jackets and coats according to the bust size, trousers and skirts according to the hip width. Change the pattern to fit your measurements if they deviate from the Burda-size chart. Cut out the pattern pieces according to your size.

Refer to our [Adjust patterns for mixed sizes](#) technique.

LENGTHENING OR SHORTENING THE PATTERN PIECES

Our pattern is calculated for a height of 5'6" — 6'0" (168 cm). If you are taller or shorter, you can adjust the pattern pieces along the lines marked "lengthen or shorten here". This way the proper fit is maintained. Always adjust all pattern pieces along the same line to the same degree.

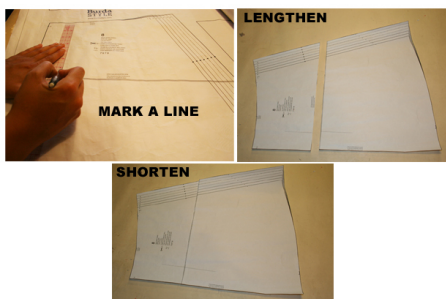
How to lengthen and shorten pattern pieces:

Cut the pattern pieces along the marked lines

To lengthen, slide the two halves of the pattern piece as far apart as necessary.

To shorten, overlap the two halves of the pattern piece as far as necessary. Blend the side edges.

Step 3 — CUTTING OUT

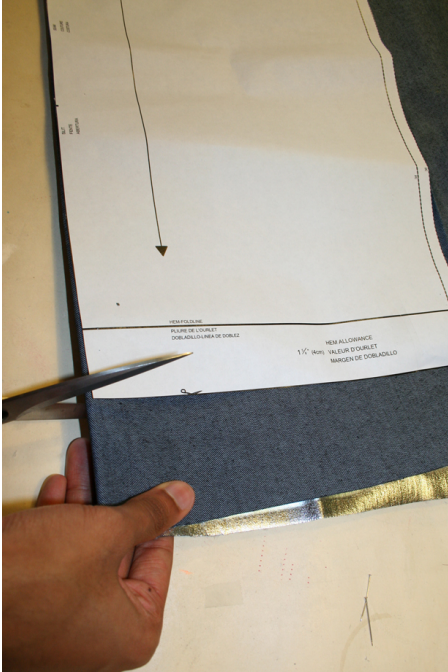


FOLD (↔ ↔ ↔ ↔) means: Cut on the fold, the fold being the center of the pattern piece, but never a cut edge or seam. The piece should be cut double, with the fold line forming the center line. Pattern pieces that are outlined with a broken line in the cutting diagrams are to be placed face down on the fabric. The cutting diagrams on the pattern sheet show how the pattern pieces should be placed on the fabric.

The cutting diagrams show the placement of the pattern on the fabric.

For a single layer of fabric, the pattern pieces are pinned to the right side. For double layers of fabric, the right sides are facing and the pattern pieces are pinned to the wrong side. The pattern pieces that are shown extending over the fold of the fabric in the cutting diagram should be cut last from a single layer of fabric.

Step 4 — SEAM AND HEMLINE ALLOWANCES are included on an average:



SEAM AND HEMLINE ALLOWANCES are included on an average:

1 5/8" (4 cm) for hem, 5/8" (1.5 cm) for all edges and stitches. Using BURDA copying paper, transfer the lines and signs of the pattern onto the wrong side of the fabric. Instructions can be found in the packaging.

LINING

Cut out the pattern pieces 8, 14 and 20 according to the cutting diagram.

INTERFACING

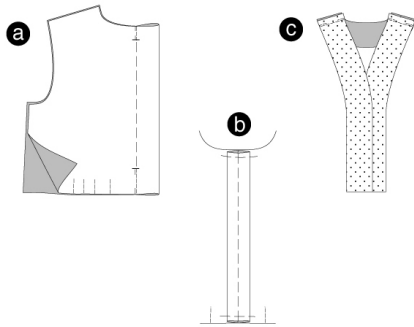
Cut out the interfacing pieces and press onto the wrong side of the fabric.

Sewing

While sewing, the right sides of the fabric are facing.

Transfer all lines of the pattern onto the right side of the fabric using chalk.

Step 5 — COAT



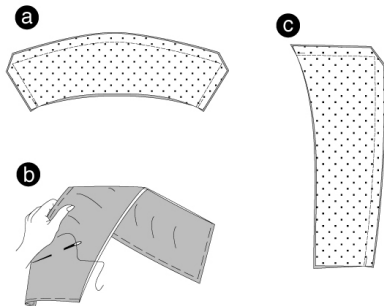
Fold the back piece lengthwise, right sides facing. Pin along the pleat lines and stitch from the top and bottom to the pleat arrow (marking). Secure seam ends. Keep pleats pinned. Position the pleat as box pleat and press; the seam line meets the center back. (a) Pin the top and bottom of the pleat. (b)

SHOULDER SEAMS

Position the front and back pieces together, right sides facing. Stitch shoulder seams (seam number 1). Ease the back shoulder edges. Press allowances apart.

Position the front and back plackets together, right sides facing. Stitch shoulder seams (seam number 2). Press allowances apart. ©

Step 6 — COLLAR

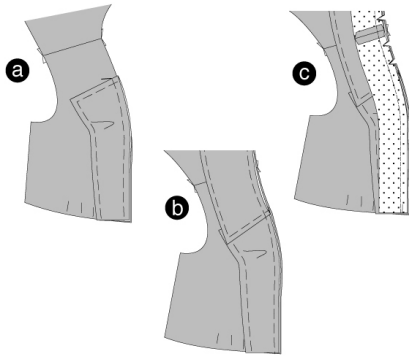


Position the undercollar and top collar together, right sides facing. Ease the overlapping length. Position the edges together and stitch. Cut the corners at a slant. Trim allowances. Turn collar, pin the edges and press. (a)

Cup the undercollar slightly. Stitch the top collar onto the undercollar using diagonal staying stitch. Position the open edges together and pin. (b)

Position interfaced and non-interfaced center front pieces together, right sides facing. Pin top and front edges, then stitch. Trim allowances and cut the corners at a slant. Turn pieces, pin edges and press. Position open edges together and pin. ©

Step 7 — INTERFACING



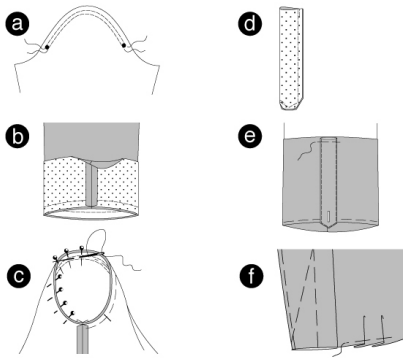
Position center front pieces and side front pieces together (seam number 3), right sides facing. The top edge meets cross line. The interfaced piece is the bottom layer. Position the collar between the cross lines of the center front pieces, onto the neckline. The cross lines of the collar meet the shoulder seams. (a) The undercollar is positioned on top of the coat (b).

Position the placket on the edge of top collar and center front pieces, right sides facing. Shoulder seams meet. Stitch. Trim allowances and snip in. turn the placket inside and press. Fold center front pieces and collar to the front. Topstitch the placket narrowly along the seam line. ©

SIDE SEAMS

Position the front and back pieces together, right sides facing. Stitch side seams (seam number 4) and stitch. Press allowances apart.

Step 8 — SLEEVES



To ease the curve of the sleeve double stitch from * to *, using basting stitches. Fold the sleeves lengthwise, right sides facing. Pin sleeve seams (seam number 5). Stitch. Trim allowances and press apart. (a)

SLEEVE Cuff

Position the ends of the cuff together. Stitch. Press allowances apart.

Position the cuff on the bottom edge of the sleeve (seam number 6), right sides facing. Seams meet. Stitch. Trim allowances. Turn the cuff inside the sleeve and press. (b)

APPLY SLEEVES

To ease the sleeve curve pull the bobbin threads slightly.

Position the sleeves on the armhole, right sides facing. When applying the sleeves 4 points are important for the right fit:

The cross lines number 7 on sleeves and front pieces have to meet. Sleeve and side seams have to meet. The cross lines on the sleeve curve have to meet the shoulder seams. The eased width has to be distributed in a way that prevents pleats and puckering. Pin the sleeve on the wrong sleeve side. Stitch. Trim allowances and press inside the sleeve. ©

SLEEVE STRAP

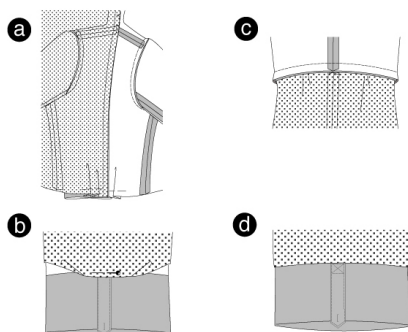
Fold the strap lengthwise, right sides facing. Stitch edges together. Trim allowances and cut the corners at a slant. Turn the strap. Pin edges and press. (d)

Work a BUTTON HOLE into the strap. Position the open edges between the cross lines on the wrong side of the sleeve cuff (e). Do not enclose the sleeve.

PLEATS

Fold the pleats according to the pleat arrows on the right side of front and back piece. Pin. (f)

Step 9 — LINING / TOP PIECE



LINING / TOP PIECE

Stitch the back pleat, shoulder and side seams of the lining pieces. Press. Same seam numbers have to meet. Pin the pleat at its bottom edge. Apply sleeves.

Position the lining piece on the placket (seam number 10), right sides facing. Shoulder seams meet. Stitch. Trim allowances and press inside the lining. Put the lining piece inside the coat, wrong sides facing. (a)

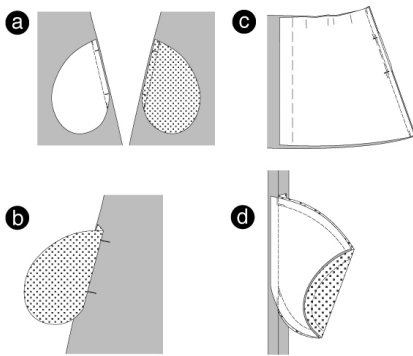
Fold the bottom edge of the lining. Pin the edge onto the cuff. Do not enclose the sleeve. Pull out the seam allowances between fabric and lining. Stitch those edges together, right sides facing (b). Enclose the sleeve strap ©.

Push pieces back so that the wrong sides are facing. Press the allowances of the sleeve cuff inside the sleeve. Stitch the strap with a boxed-in seam, enclosing the sleeve (d)

At the top piece, position the bottom edges of fabric and lining pieces together. Stitch. Seams and pleats meet.

Position the back skirt panels together, right sides facing. Stitch the back center seam. Press allowances apart.

Step 10 — SIDE SEAM / POCKET SEAM



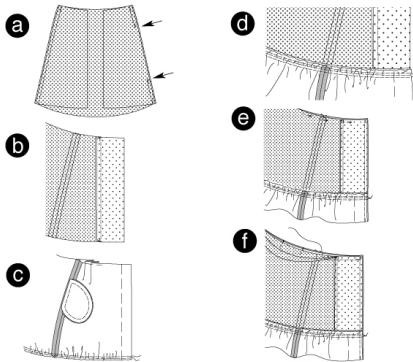
Position and pin the lining pocket pouch on the front skirt panels and the fabric pocket pouch on the back skirt panel. The cross lines meet. Stitch. Secure seam ends. (a)

Fold the pocket pouches over the seam lines and press. (b)

Position the front and back skirt panels together. Pin side seams (seam number 11). Stitch, leave out the pocket openings between the cross lines, but keep them pinned. Secure seam ends. ©

Press allowances apart. Press pocket pouch inside the front skirt panel, position together and stitch. Position the pleats along the top edge according to the arrows on the right fabric side. Pin. (d)

Step 11 — LINING



LINING

19 Stitch the side seams along the lining skirt panels (seam number 12). Important for one of the side seams: stitch around 4" (10 cm) from the top and from the bottom. Keep the rest of the side seam open to be able to turn the coat later on. Secure seam ends. Press allowances apart.

20 Position the front plackets on the front edges of the lining skirt panels (seam number 13), right sides facing. Pin and stitch. Press allowances inside the lining.

21 Double stitch the bottom skirt edge using basting stitches. Tighten bobbin thread to the width of the lining skirt (with plackets). Knot thread ends. Distribute the width equally.

22 Position the bottom edge of the coat on the bottom edge of the lining piece (seam number 14), right sides facing. The side seams meet. Stitch. Press allowances inside the lining.

23 Position lining and plackets on the top skirt edge, right sides facing. In that way the hemline of the coat will be bunched up. Position front edges (seam number 15) together and pin. Stitch. Remove pins, but do NOT turn the coat yet.

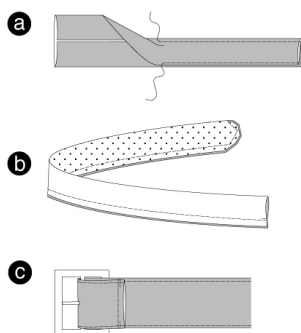
STITCH TOP PIECE

Push the top piece between the fabric and the lining part of the skirt piece.

24 Position the top piece onto the top edge of the fabric skirt (seam number 15), right sides facing and the centers meeting. Side seams and pleats meet as well. Apply the lining piece and pin. Stitch. Now, turn the coat through the lining side seam. Pin the seam opening and press. Topstitch the edge narrowly.

Work a **BUTTON HOLE** into the right front piece. Sew a big **BUTTON** onto the left center front piece. For the straps on the sleeves, sew smaller buttons onto * marking on the sleeves.

Step 12 — LOOPS / BELT



LOOPS

Fold the strip so that the edges meet the center line. Press. Fold again in half, wrong sides facing. Press. Topstitch long edges narrowly. Cut the strip into two pieces and neaten strip ends. (a)

BELT

Fold the belt lengthwise, right sides facing. Pin edges and stitch. Trim allowances and cut the corners at a slant. (b) Turn belt. Pin edges, press and topstitch narrowly. Neaten ends.

Work a hole into the belt, around 3â— (7 cm) from the open belt end. Neaten. You could use a rivet to neaten the hole. Attach this end of the belt to a buckle. Wrap the belt end around the bar of the buckle (the belt prong goes through the hole just made) and stitch. Apply eyelets to the angled belt end. ©