

How to make Danielle 9306 into the Maya pattern

By: Benedikta

<http://www.burdastyle.com/projects/how-to-make-danielle-9306-into-the-maya-pattern>



This technique has no description.

Step 1

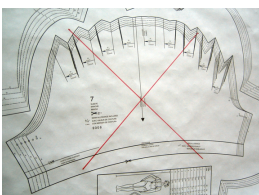


1. There are in total only three changes that have been made to the Danielle pattern to get the Maya pattern. No sleeves are attached, the hem is shortened and the side seams are moved out a bit to make the skirt of the dress fuller.

Step 2

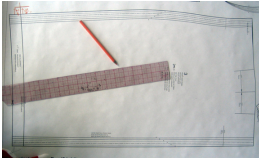
2. Look at your Pattern Print out and get familiar with all the pieces. You will be using all of them (#1-#9) for the dress , except #7, the sleeve pattern piece. On the left upper corner you have the back skirt piece (#6) and in the lower left hand corner the front skirt piece (#3). Only those two pattern pieces will be modified in our how to.

Step 3



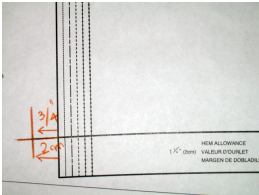
3. Here you see pattern piece # 7, the pattern piece for the sleeves, which is the one that you don't need for the Maya Dress. Make sure to put it aside before cutting, in order to avoid wasting fabric.

Step 4



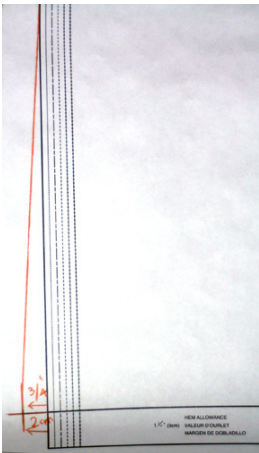
4. Next are the adjustments on the skirt. Take pattern piece # 3 (Front of Skirt), determine where the line for the side seam of your size is. (Make sure to measure yourself carefully before choosing your size.) The Side Seam is opposite to the seam that is marked as center front / cut on fold. It is the slightly curved line on the top of the photo

Step 5



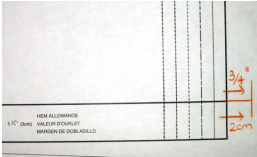
5. Find the point where your side seam intersects with the hemfoldline. From this point, (I used the side seam of size 44 for my how to) extend the hemline perpendicular to the side seam. Make a mark on that line at $3/4$ (2 cm) away from the original side seam.

Step 6



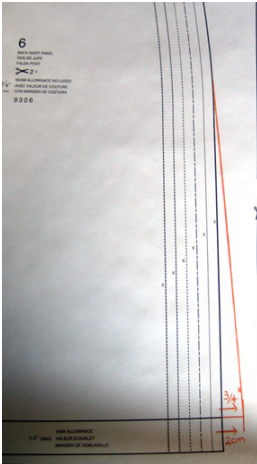
6. Connect the point that you just created in a straight line with the widest point of the hip. The widest part of the hip is right where the curve of the hip turns into the straight line.

Step 7



6. Follow the same steps on the Back of the Skirt (pattern piece #6), but be aware that the side seam is on the other side then on the Front Skirt, opposite from the Back center seam.

Step 8



7. Follow the same procedure than on the Front piece, by connecting the marked point with the widest point of the hip in a straight line

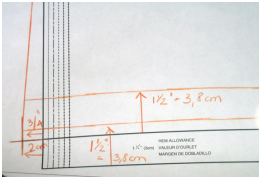
Step 9



8. Back to the Front Skirt piece(#3) I will show you how to adjust the hem.

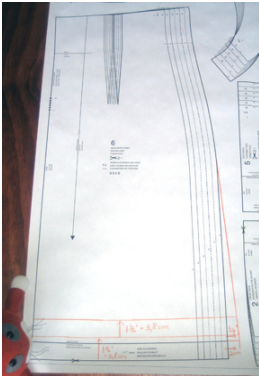
Remember however that the amount that I shortened the dress for our shoot, may not be enough or too much for your own height or taste . Measure on yourself from the waist down where you want the hem to be. According you determine how much to shorten that hem, by measuring down from the marks of the waist on the pattern. If you are not sure how long the hem should be rather give to much and shorten it later.

Step 10



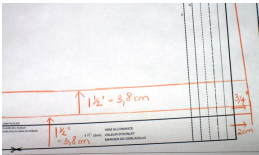
9. Move the hemline as well as the hemallowance line both up for 1 \hat{A} ¹/₂ (3.8 cm). Draw the new hemfold and hemallowance parallel to the old lines into the pattern.

Step 11



10. Same procedure for the Back Skirt piece (#6)

Step 12



11. Again, move hemfold and hem allowance up for 1 \hat{A} ¹/₂ (3.8cm) and draw in new line parallel to the old ones across the pattern. Now you finished all the pattern changes that needed to be done. Before you start cutting you should however make sure that the adjusted side seams of front and back match in their length, to avoid mistakes or unexact measuring. If everything matches you are good to go.

Step 13



Good luck and lots of fun, while creating your own Maya.

BurdaStyle

How to make Danielle 9306 into the Maya pattern