

# Amanda Plus

By: BurdaStyle

<http://www.burdastyle.com/projects/amanda-plus>



Since the Amanda is so pretty, we had to offer it in Plus as well. We bring the past to the present with our vintage-inspired silk chiffon gathered top. For this version, we moved the drawstring up a bit above the waist to give a bit more definition. Chic, timeless, and elegant, we can't wait to see yours.

## Materials

[Silk chiffon](#), [fusible interfacing](#).

## Step 1

burda Download-Pattern  
SHIRT 6040 - Instructions

leicht normal weit

| body sizes | 34 | 36 | 38 | 40  | 42  | 44  | 46  | 48  | 50  | 52  | 54  | 56  | 58  | 60  |
|------------|----|----|----|-----|-----|-----|-----|-----|-----|-----|-----|-----|-----|-----|
| Bust       | 88 | 92 | 96 | 100 | 104 | 108 | 112 | 116 | 120 | 124 | 128 | 132 | 136 | 140 |
| Waist      | 70 | 74 | 78 | 82  | 86  | 90  | 94  | 98  | 102 | 106 | 110 | 114 | 118 | 122 |
| Hip        | 90 | 94 | 98 | 102 | 106 | 110 | 114 | 118 | 122 | 126 | 130 | 134 | 138 | 142 |

without nap

Interfacing: 90 cm x 90 cm  
Baumwollstoffe: leichte Baumwollstoffe

3,15 cm - 3,60 cm

111 - 182 cm  
58 - 70 cm

right side  
wrong side  
interfacing  
lining  
batting

Pattern pieces: 1, 2, 3, 4, 5, 6, 7, 8, 9, 10

## PATTERN

Sizes 16 to 28 (EU 48 to 60)

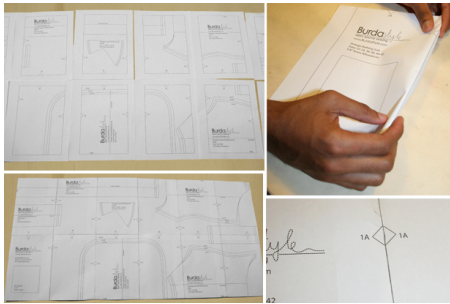
6 Front piece 1x

7 Back piece 1x

- 8 Placket (armhole) 4x
- 9 Placket (neckline) 2x
- 10 Bias strips (armhole) 2x

Fabrics: Light cotton fabrics

## Step 2

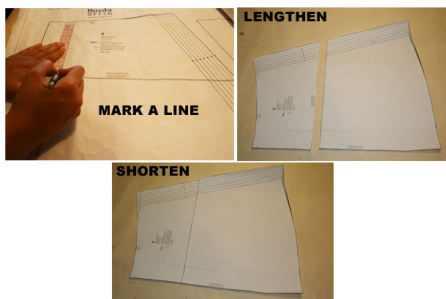


The patterns can be printed out at the copy shop. If you decide to print them at home, follow the instructions:

Paper cut for ANSI A (German DIN A4) prints:

The patterns are printed out on 18 sheets (sizes 2 to 14) or 21 sheets (sizes 16 to 28) with a thin frame. Wait until all sheets are printed out. Arrange the sheets so that they fit together (see additional page with the overview of the prints). Fold the single sheets on the upper and right edge along the thin frame lines. Begin with the left lower sheet and then tape the frame lines together precisely.

## Step 3



### ADJUST PATTERN SIZES

Select your size according to the Burda-dimension table: dresses, blouses, jackets and coats according to the bust size, trousers and skirts according to the hip width. Change the pattern to fit your measurements if they deviate from the Burda-size chart. Cut out the pattern according to your size.

Sizes 2 to 14: pattern pieces 1 to 5, sizes 16 to 28: pattern pieces 6 to 10.

Refer to our 'Adjust patterns for mixed sizes' technique

### LENGTHENING OR SHORTENING THE PATTERN PIECES

Our pattern is calculated for a height of 5' 6" (168 cm). If you are taller or shorter, you can adjust the pattern pieces along the lines marked "lengthen or shorten here". This way the proper fit is maintained. Always adjust all pattern pieces along the same line to the same degree.

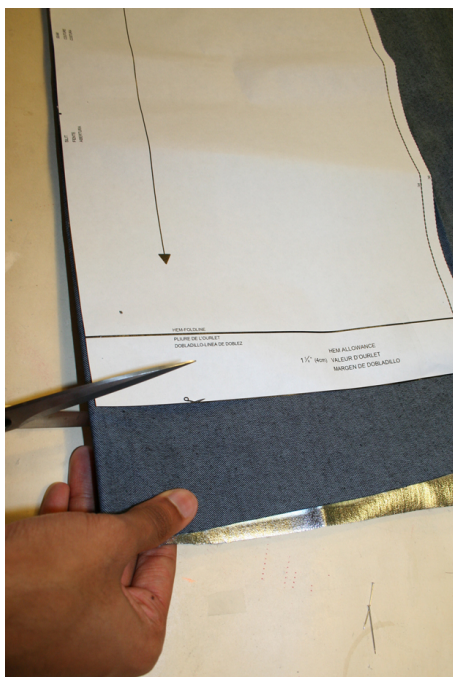
How to lengthen and shorten pattern pieces:

Cut the pattern pieces along the marked lines

To lengthen, slide the two halves of the pattern piece as far apart as necessary.  
To shorten, overlap the two halves of the pattern piece as far as necessary. Blend the side edges.

---

## Step 4



### CUTTING OUT

**FOLD** (â' â' â' â') means: Cut on the fold, the fold being the center of the pattern piece, but never a cut edge or seam. The piece should be cut double, with the fold line forming the center line. Pattern pieces that are outlined with a broken line in the cutting diagrams are to be placed face down on the fabric. The cutting diagrams on the pattern sheet show how the pattern pieces should be placed on the fabric.

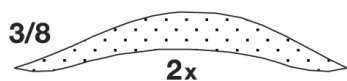
The cutting diagrams show the placement of the pattern on the fabric.

For a single layer of fabric, the pattern pieces are pinned to the right side. For double layers of fabric, the right sides are facing and the pattern pieces are pinned to the wrong side. The pattern pieces that are shown extending over the fold of the fabric in the cutting diagram should be cut last from a single layer of fabric.

---

## Step 5

### INTERFACING



**SEAM AND HEMLINE ALLOWANCES** are included on an average:

1 5/8" (4 cm) for hem, 5/8" (1.5 cm) for all edges and stitches. Using BURDA copying paper, transfer the lines and signs of the pattern onto the wrong side of the fabric. Instructions can be found in the packaging.

## Sewing

While sewing, the right sides of the fabric are facing.

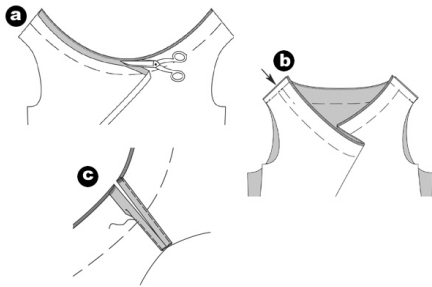
Transfer all lines of the pattern onto the right side of the fabric using basting stitches.

## Interfacing

Cut the interfacing and press it onto the wrong side of the fabric.

---

## Step 6



## SHIRT

### Neckline edge

Fold the edge of the front and back piece neckline inside and press. Stitch the fold line using a narrowly adjusted zigzag stitch. Trim the allowance close to the stitch line. (a)

Tip: First test using waste fabric. Also, test the stitch adjustment and thread tension.

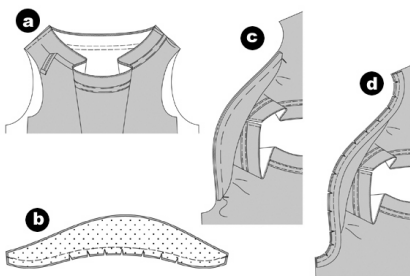
### SHOULDER SEAMS

Position the front and back pieces together, right sides facing. Pin shoulder seams (seam numbers 1 and 5). Stitch the allowances from the armhole edges together. Additionally, stitch at the left shoulder seam between the markings for the tunnel (arrow). Secure seam ends. Trim allowances to 1.2 cm and press apart. (b)

Press apart the allowances, turn under the raw edges, press again and stitch narrowly. ©

---

## Step 7



### TUNNEL PLACKET (neckline)

Turn the placket along the long edges 0.6 cm inside and press. The placket meets the neckline seam line. Stitch. Turn the ends of the right shoulder seam. Topstitch the placket along the long edges. Secure seam ends. (a)

### ARMHOLE PLACKETS

Position two plackets together, one with and the other without interfacing; right sides facing. Pin the bottom edges together. Trim allowances and snip in. Turn plackets, pin edges and press. (b)

Pin the plackets onto the armholes, right sides facing (seam numbers 2/3, 6/7 respectively). The ends meet the cross lines. ©

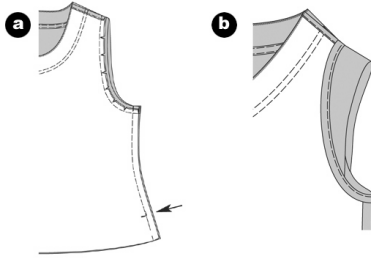
#### ARMHOLES / BIAS STRIPS

Fold the bias strips lengthwise in half, wrong sides facing. Press.

Position the bias strips on the armholes, right sides facing. The open edges are positioned on the allowance. Stitch, enclosing the plackets. Trim allowances. Turn the bias strip over the seam line inside the armhole and press. (d)

---

### Step 8



#### SIDE SEAMS

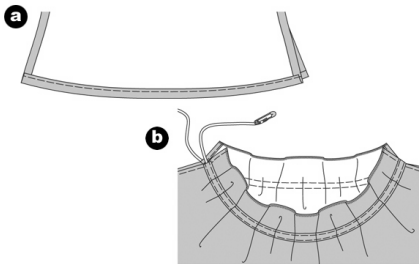
Position the front and back piece together, right sides facing. Pin the side seams (seam numbers 4 and 8), stitch.

Advice: end stitching at the opening sign at the right side seam (arrow). Secure seam ends. Keep opening pinned. Neaten allowances and press apart. Remove needles from opening. (a)

Turn the bias strip along the armhole inside and pin. Position the placket on the armhole. Stitch narrowly along the seam line, thereby enclosing the bias strip. Hand sew the bias strip onto the allowance of the side seam. (b)

---

### Step 9



#### HEMLINE / TUNNEL

Neaten hemline. Turn the hemline inside and press. Stitch the shirt hemline 1.2 cm wide. (a)

Cut 60 cm (150 cm) from the cord for the neckline.

TIP: Tape the end of the cord to prevent fraying.

Pull the cord through the neckline tunnel using a safety pin. Gather the neckline to a nice width. Knot the cord ends at the right shoulder seam. Use the rest of the cord for the hemline tunnel. Gather the hemline nicely and knot cord ends. (b)

---

