

Sailor Anda

By: kimsurf77

<http://www.burdastyle.com/projects/sailor-anda>



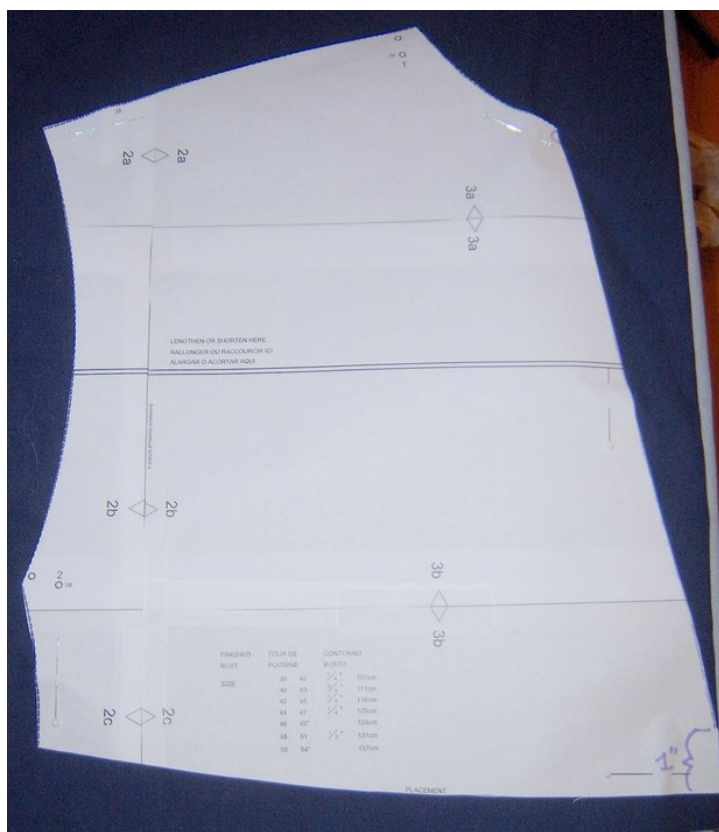
I took on the challenge of creating the Anda dress from such a plain, simple pattern and turning it into something of my own creation. The first thing I thought was that this dress needed a signature – my signature – a hood! I love hooded clothes. So I traced a pattern from one of my hooded baby

doll shirts and added it to the Anda pattern. I also raised the waist line, gave it a V neck and added the peek a boo material, looped up the sleeves and added a little bow to the front. I wanted to keep it simple so that I can create a how to, but also wanted to make it special. I think the sailor Anda is definately special!

Materials

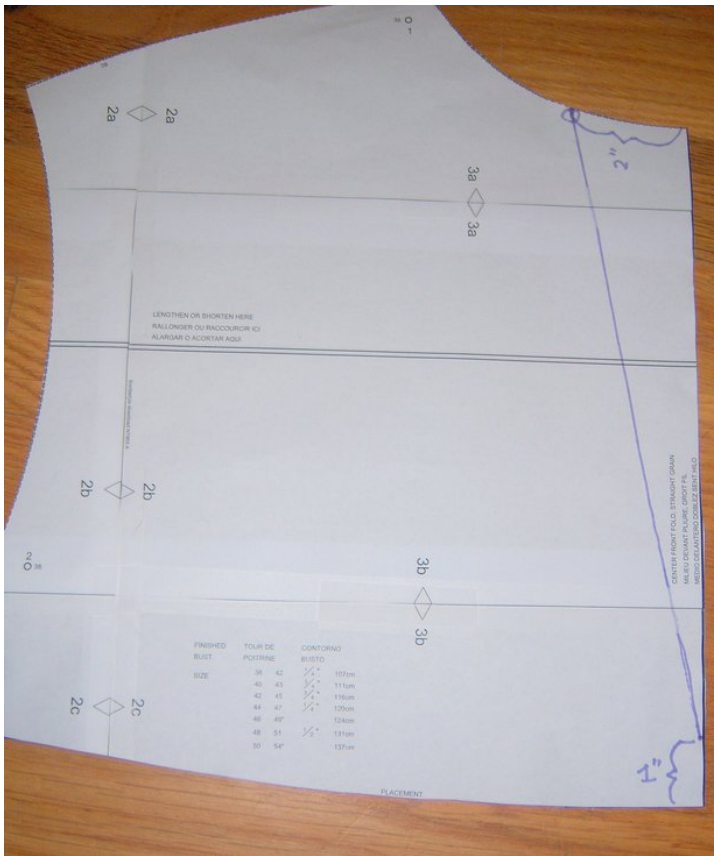
I made the Anda dress for this creation out of my fabric stash. I used a blue heavy weight cotton which was actually curtain remnants. and I used a heavy weight white ribbed knit. This pattern also uses enough 1/2" elastic to stretch around your waist (or bust in this case).

Step 1



First, I cut out the Anda Dress Pattern (I used the smallest cut and used a larger seam allowance to make it smaller). I decided that I wanted to make the top and the skirt separate colors, so I cut the pattern at the line that marks the band. I cut pieces 1 and 2 (front and back) the same way. This also raised the waist line to sit just under the bust.

Step 2



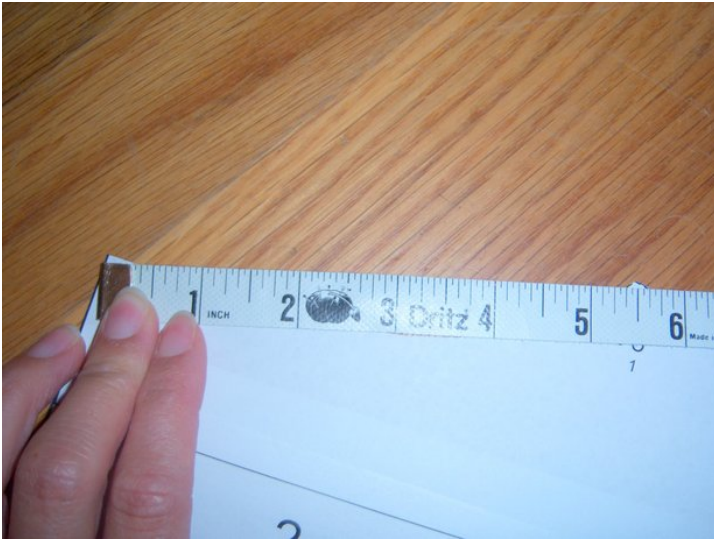
I used the pattern piece for the top of number 2, and to make it a V neck – I measured 1" from the bottom of the pattern. Then at the top (neckline) i measured in by 2" and drew the line to connect them. Since the pattern is cut on the fold, when you cut it out and open it, it will have a V Neck.

Step 3



After I cut out the top pattern pieces, I sewed them together at the side seams, right side together. You can find these instructions on the actual pattern download.

Step 4



Next, I made the pattern for the hood. I measured the neck line of Pattern piece 2 (this is the back of the dress, where the hood will attach).

Step 5



I used a shirt with a hood as a pattern, and adjusted the length around the collar. to make the hood pattern, fold the hood you are tracing in half length wise and trace the pattern, cut out two.

Step 6



Sew the hood from the top all the way down the neck. Trim the seam and press flat. (you will also need to either sew around the edges, or use bias tape to finish it.).

Step 7



Pin the hood to the back of the dress and sew along the neckline, I sewed the hood about 1" into the shoulder seam to help it lay flat across the shoulders. I used bias tape flat across the neckline to cover the seam.

Step 8



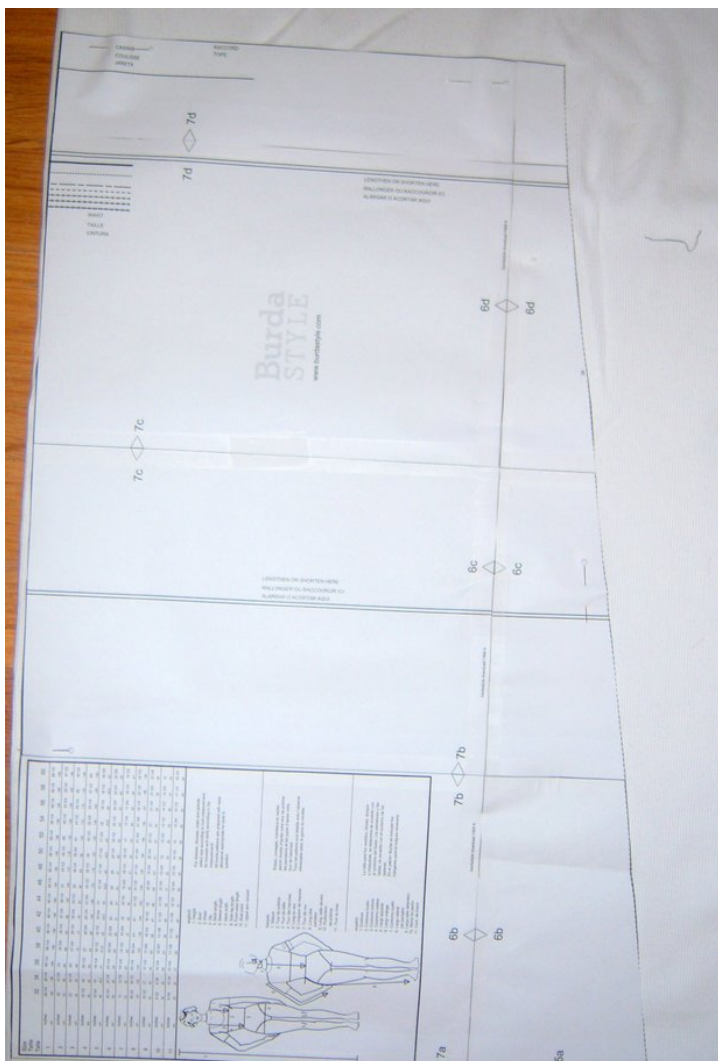
Next, cut a piece of the knit fabric to use in the Peek A Boo front. it doesn't need to be perfect, but it needs to be big enough to cover the area with a seam allowance. I traced the V neck, gave it a seam allowance of 1/4" and cut out the fabric. then I pinned it to the front, right sides facing together. Do this for the other side also.

Step 9



Here is what it should look like with the peek-a boo fabric in place. Be sure to iron the seams to the outside so you don't see the dark fabric through the white.

Step 10



Next, cut out the pattern for the front and back of the skirt, sew together right sides facing and press the seams.

Step 11



Then, Pin the skirt to the top all the way around. Sew the seam and press.

Step 12



The dress looks large at this point, but don't forget the waist band. This is the tricky part of the dress.

Step 13



This is the hardest part of the dress, so read carefully.

Cut out the pattern for the band. Press the band in half lengthwise. Unfold and fold each of the raw edges in and press almost to the center line that you made. This is called bias tape (well, a version of it). Pin this to the outside of the dress with the raw edges hidden starting in the front, and ending in the front. I top stitched all around the top very close to the edge. Then, all the way around the bottom close to the edge. So, the front should have an opening as the casing. Next, cut a piece of 1/2" elastic to fit under your bust where the waist line will lay. I used a string threader to pull the elastic through the casing and made the gathers. Then I sewed the ends of the elastic together and tucked it in. I'll put a bow on it later.

Step 14



The dress should look something like this. I made more bias tape and I folded it in half and pinned and sewed it all around the neckline to finish the edges. For the finishing touches: Shoulder loops, I made 2" wide strips of fabric, folded it in half and made a seam, turned right side out and ironed flat, then I cut about 3" lengths and looped them around the shoulders. I sewed the ends together and stay stitched the inside neckline edge so it wouldn't move around. For the bow: I used a 4" wide strip of fabric, and with right sides together, sewed up the middle, turned right side out, and pressed flat. Then I cut the ends on a slant, tucked in the raw edges at the bottom and topstitched closed. To attach, I folded the bow in half and made a loop, flattened it and hand sewed it. It kinda looks like a breast cancer ribbon.

Step 15



This is the finished front.

Step 16



And this is the finished back.

