

Benedikta

By: BurdaStyle

<http://www.burdastyle.com/projects/benedikta>

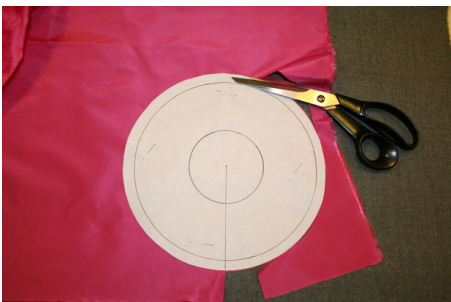


As mentioned with the posting of Nora's gown, when Nora and Benedikta went to the Bambi Awards, we had the golden opportunity to make both their gowns. Benedikta's gown is a work of art. The multi-tiered ruffles swing and flare from a diagonal body with an a-symmetrical elegance. In her own words Benedikta explains: "This gown, made from Silk Crepe with Lycra combined with Silk Taffeta, was inspired by the designer I worked for right out of school. Besides many other useful tips, he taught me how bias is done best. His techniques replaced the side seam with something called an X-seam. The X-seam, visible on each side of the bias-cut dress, creates a criss-crossed seam from the bust dart to the hip dart. At first, the pattern pieces may look quite unfamiliar but you will see what a rich way of pattern making opens up once you've gotten used to it."

Materials

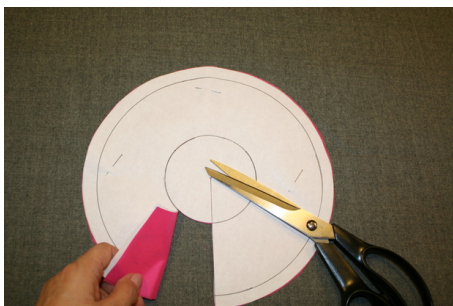
We used a stretch silk crepe for the bodice (this fabric must be stretchable). We also used taffeta for the ruffles, with tulle providing volume underneath.

Step 15



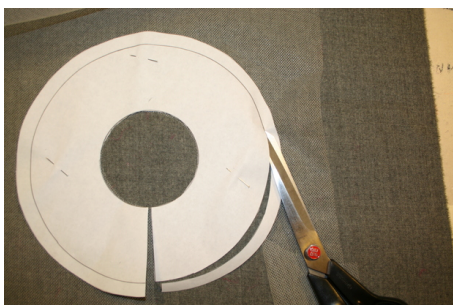
Weâ€™re showing you with a self-made circle pattern. If you are using the Benedikta pattern, draw a smaller circle inside each of the larger circles, 1â€™ smaller in diameter. Cut out the larger circle in the self fabric.

Step 16



Cut through to the center of the circle; cut out.

Step 17



Now cut the smaller circle out of tulle. Weâ€™re showing in contrasting tulle, but you probably want to use a matching tulle for your project.

Step 18



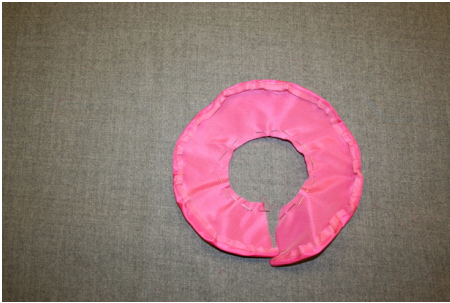
Pin together the innermost edges of the two fabrics, right sides facing.

Step 19



Pin together the outer edges of the circles. Sew the outer edge together. It's ok to stretch the tulle to ease out to the larger circle.

Step 20



Now, unpin the inner edge and flip the circles around, wrong sides facing, enclosing the raw edges. Repin the inner edge.

Step 21



Sew the inner edge and press the outer circumference. For a softer look, give a gentle steam instead of a hard press.

Step 22



Now, use as you will!

Step 1

burda Download-Pattern
6048 - Instructions

●●● advanced

close fitting

burda sizes	34	36	38	40	42
I	110	115	120	125	130
Tulle	90	95	100	105	110

→ with nap ← without nap

Visseline Formband
3,50 m

Stoff I: Nur querelastische Stoffe: Kreppstoff!
Das Oberes wird mit dem gleichen Stoff gezeichnet, die Stoffmenge ist dafür berechnet.

Stoff II: Taffeta

Tulle: Alle Volants werden mit Tulle geschichtet

Rockbreite: 110 - 127 cm

Patternpieces:

PATTERN

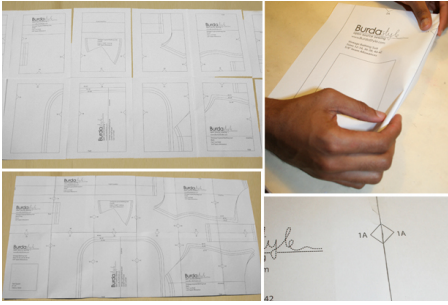
- 1 Front piece 2x
- 2 Back piece 2x
- 3 Bottom back piece 2x
- 4 Bottom side piece 2x
- 5 Skirt panel 1x
- 6 Neckline ruffle (beginning) 2x
- 7 Neckline ruffle (center) 2x
- 8 Neckline ruffle (end) 2x
- 9 Narrow ruffle (skirt) 7x
- 10 Wide ruffle (skirt) 8x

Fabric I: Only diagonally stretchable fabrics: crepe fabric
Double the fabric for the bodice, the extra fabric amount is included.

Fabric II: Taffeta

Tulle: all ruffles to be doubled using tulle

Step 2

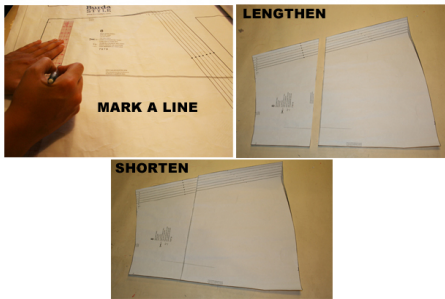


The patterns can be printed out at the copy shop. If you decide to print them at home, follow the instructions:

Paper cut for ANSI A (German DIN A4) prints:

The patterns are printed out with a thin frame on 72 sheets. Wait until all sheets are printed out. Arrange the sheets so that they fit together (see additional page with the overview of the prints). Fold the single sheets on the upper and right edge along the thin frame lines. Begin with the left lower sheet and then tape the frame lines together precisely.

Step 3



ADJUST PATTERN SIZES

Select your size according to the Burda-dimension table: dresses, blouses, jackets and coats according to the bust size, trousers and skirts according to the hip width. Change the pattern to fit your measurements if they deviate from the Burda-size chart. Cut out the pattern pieces 1 to 10 according to your size.

Refer to our 'Adjust patterns for mixed sizes' technique

LENGTHENING OR SHORTENING THE PATTERN PIECES

Our pattern is calculated for a height of 5' 6" (168 cm). If you are taller or shorter, you can adjust the pattern pieces along the lines marked "lengthen or shorten here". This way the proper fit is maintained. Always adjust all pattern pieces along the same line to the same degree.

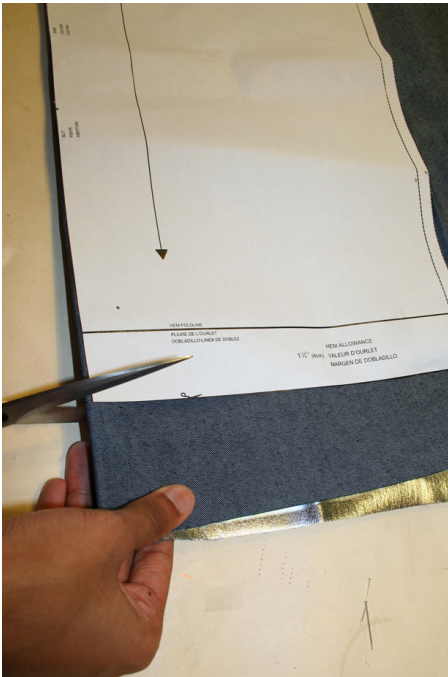
How to lengthen and shorten pattern pieces:

Cut the pattern pieces along the marked lines

To lengthen, slide the two halves of the pattern piece as far apart as necessary.

To shorten, overlap the two halves of the pattern piece as far as necessary. Blend the side edges.

Step 4



CUTTING OUT

FOLD (â' â' â' â') means: Cut on the fold, the fold being the center of the pattern piece, but never a cut edge or seam. The piece should be cut double, with the fold line forming the center line. Pattern pieces that are outlined with a broken line in the cutting diagrams are placed face down on the fabric. The cutting diagrams on the pattern sheet show how the pattern pieces should be placed on the fabric.

The cutting diagrams show the placement of the pattern on the fabric.

Fabric I: The bodice will be cut from double layers of fabric using one fabric only. For double layers of fabric, the right sides are facing and the pattern pieces 1 to 4 are pinned to the wrong side. In this way, you automatically cut the pattern pieces 1 to 4 as mirror-image pairs for the dress and the inner dress layer. See cutting diagram.

Fabric II: Pin the asymmetrical skirt panel piece 5 on the right fabric side of a single layer of fabric. The labeled side is facing up. Cut it out.

Fabric II and tulle: Cut the ruffle pieces 6 to 10 from the fabric and the tulle.

Step 5

SEAM AND HEMLINE ALLOWANCES are included:

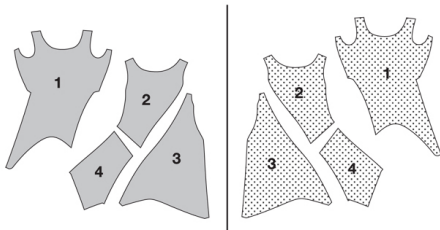
1 _â' (3 cm) for the hemline and 5/8â' (1.5 cm) for all edges and stitches. Using BURDA copying paper, transfer the lines and signs of the pattern onto the left fabric side. Instructions can be found in the packaging.

SEWING

While sewing, the right sides of the fabric are facing.

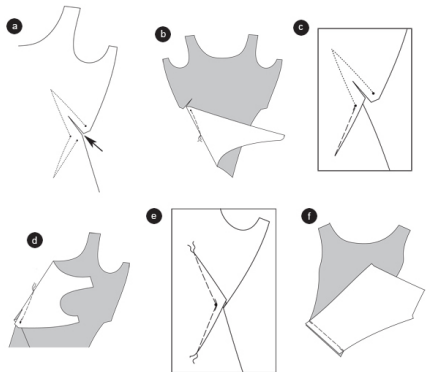
Transfer all lines of the pattern onto the right side of the fabric using basting stitches.

Step 6



Arrangement of the cut out pieces: To keep better track, the pieces 1 to 4 for the outer layer of the dress and the inner layer of the dress will be arranged separately. The pieces for the inner layer will be described as lining in the instructions. Mark the fabric and lining pieces to differentiate between dress and lining pieces.

Step 7



DRESS

Front piece darts

Cut the right bust dart between the dart lines 2â' (5 cm) according to the image (a).

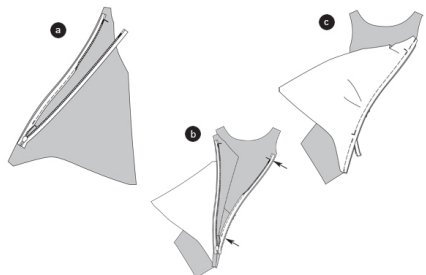
Pin the right bottom dart and stitch to a point (b). Press the dart to the side ©.

Pin the bust dart and stitch it to a point (d). Press the dart upwards (e).

BACK CROSS PRINCESS SEAM

Position the bottom side piece (piece 4) on the back piece (piece 2), right sides facing. Pin the cross seam (seam 1) and stitch. Press allowances apart (f).

Step 8



ZIPPER (hidden)

We used a zipper that is hidden on the right side. The zipper should be slightly longer than the opening. The zipper will be applied before the seam will be stitched under and above the opening. To stitch the zipper you need a zipper foot for your sewing machine. TIP: To stabilize the opening edges for the application of the zipper, press fusible bias tape onto the opening edge seam lines.

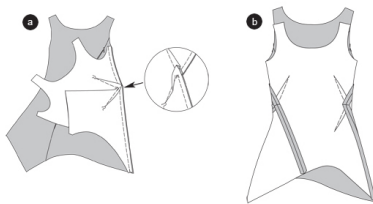
Open the zipper and pin on the opening edge of the bottom back piece (piece 3). Beginning at the top opening sign, pin the zipper with its upside facing down, onto the opening edge seam allowance. The little teeth need to be positioned on the marked opening edge (a).

Stitch the zipper, using a zipper foot, closely along the zipper teeth. In the same way, stitch the zipper on the other opening edge of the back piece and the bottom side piece, (pieces 2 and 4) (b).

Stitch along the opening edges from the top to the bottom opening sign. Since the little teeth tend to roll in, the zipper foot keeps them flat when stitching. Close the zipper.

Position the pieces together, right sides facing, and stitch the seams above and below the zipper as close to the opening signs as possible. Slightly pull the bottom end of the zipper. Secure seam ends. Press allowances apart ©.

Step 9

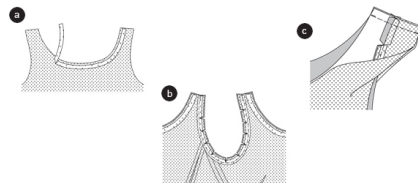


SIDE SEAMS

Position the front and back pieces together, right sides facing. Pin the right side seam from seam no. 3 to the corner, the seam numbers meet. Stitch not enclosing the top dart. Secure seam ends. Turn the bottom dart aside and stitch the seam continuously from the corner to the bottom edge. Topstitch. Secure seam beginnings and ends. Press allowances apart (a).

Pin the left side seam, starting at seam number 4. The cross seam meets the dart. Stitch the seam. Press the allowances apart (b).

Step 10



LINING

Stitch the pieces for the lining together as mirror-image pair of the dress. At the back piece, stitch the seam above and below the opening signs. Leave the space for the zipper.

As support, press the bias strip onto the front and back lining neckline (wrong lining side). The fusible bias strip covers 7 mm of the allowance and 5 mm of the neckline. Apply bias strips support to the armholes as well (a).

ARM HOLES

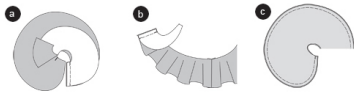
Move the lining dress over the fabric dress, right sides facing. Leave the shoulder edges open. Pin the armholes together and stitch,

the seams meet. Trim allowances, snip in at the curves. Turn the dress inside out and place the shoulder edges in position (b).

SHOULDER SEAMS

Position the front and back pieces together. Pin the shoulder seams of fabric and lining piece (seam numbers 5 and 6). The armhole seams meet. Stitch shoulder seams. Press allowances apart ☺.

Step 11



RUFFLES / NECKLINE

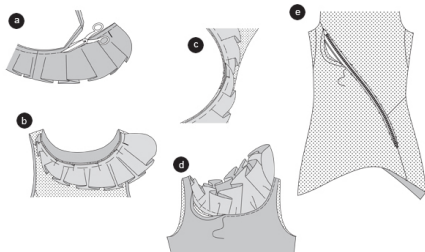
Stitch the ruffle pieces together (For a more detailed explanation on making the ruffles, see the step-by-step instructions listed at the end, steps 15 – 22):

Position the center ruffle (piece 7) on the large ruffle (piece 8), right sides facing. Stitch the seam (seam number 7). Trim allowances and press apart (a).

Position the small ruffle (piece 6) on the center ruffle, right sides facing. Stitch the seam (seam number 8). Trim allowances and press apart. Stitch the second neckline ruffle and the tulle ruffles accordingly (b).

Position the tulle and fabric ruffles together, right sides facing. Stitch along the outer edges. Trim allowances. Turn the tulle ruffle to the inside and press the edges ☺.

Step 12



Pin the open top ruffle edges together and stitch using basting stitches, \hat{a} (1.2 cm) from the edge. Trim the allowance to \hat{a} (1.2 cm). Trim the allowance of the neckline on dress and lining to \hat{a} (1.2 cm) (a).

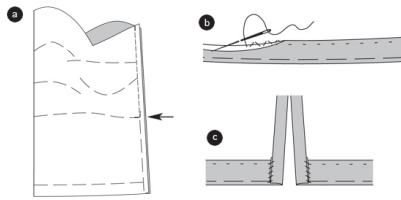
Pin one ruffle with its fabric side on the back lining neckline. The wide end of the ruffle is positioned on the left shoulder, the narrow end of the ruffle on the right shoulder. The cross lines meet the shoulder seams (b).

IMPORTANT: The ruffle is wider than the neckline. Fold the extra width into equally distributed pleats until the ruffle fits onto the neckline. The loose, irregular drape is wanted. Accordingly, pin the second ruffle on the front neckline. The ruffle ends overlap at the shoulder ☺. Stitch the ruffles, but do not enclose the dress. Press allowances into the dress.

Fold the neckline allowance of the dress to the inside and pin to the seam line of the lining. Topstitch the neckline narrowly, turn the ruffle down (d).

Fold in the lining seam allowances and hand stitch on the zipper strips. Pin the bottom edges of dress and lining together (e)

Step 13



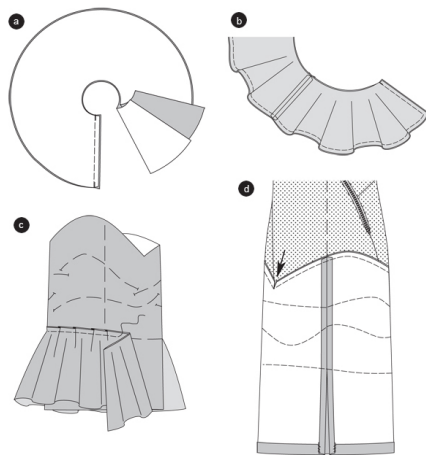
SKIRT

Fold the skirt panels, right sides facing. Pin the center back seam. Stitch the seam from the top to the slit sign (arrow). Secure seam ends. Baste the slit. Neaten allowances and press apart. Pin the skirt panel onto the bodice. Try the dress on to adjust the skirt length. Remove the skirt again (a).

HEMLINE and SLIT

Remove the basting stitches from the slit. Position the allowance. Trim hemline allowance, fold and sew by hand (b). Turn slit allowances to the inside and stitch onto the hemline ©.

Step 14



RUFFLES (For a more detailed explanation on creating the ruffles for this gown, please see steps 15 – 22 following this step)

Stitching the ruffles together:

Position 2 ruffles together, right sides facing; and stitch along the straight edges. Secure seam ends. Press allowances apart. Stitch the tulle ruffles accordingly. For the bottom ruffle layer stitch 4 wide ruffle pieces (pieces 10) together to become 1 long ruffle. Stitch tulle ruffle pieces accordingly (a).

Position the tulle and fabric ruffle together, right sides facing. Stitch together along the bottom edges and straight ends. Turn the tulle to the inside and press the edges. Neaten the open edges (b).

TIP: To drape the ruffles on the skirt panel: The ruffles should be gathered irregularly, and appear in a natural, full and loose drape. The marked seam lines on the skirt panel are just an approximation. Pin the ruffles at some points above and below the line onto the skirt panel, according to your choice. The hemline of the skirt can be visible at some points.

Pin the bottom ruffle on the marked bottom seam line on the skirt panel. Begin/end 10" (25 cm) from the center front line. The top edge of the ruffle is wider than the skirt panel. Gather the extra width irregularly into pleats or bunch it up. Stitch the top ruffle edge ©.

TIP: Move the skirt panel over the ironing board. That makes it easier to pin the ruffles onto the skirt. Or, drape ruffles while dress is hanging on a model, dress form or hanger.

For the second ruffle layer, stitch 2 wide ruffle pieces together and 2 narrow ones. Double the 2 ruffles using the mirror-imaged pair of tulle ruffles.

Pin the narrow ruffle on the center front of the skirt panel. Stitch. Pin the wide part of the ruffle on the center part in the back. The ruffle ends overlap and could be stitched according to choice.

For the third ruffle layer stitch together 2 wide and 2 narrow ruffle pieces as described in step for the second layer. Stitch those on the seam line that is marked below the top skirt edge.

For the top ruffle layer stitch 3 narrow ruffle pieces together. Pin the ruffle on the top skirt edge. Begin/end at the left corner next to the center front (seam line marking).

APPLY SKIRT

Pin the bodice on the top skirt edge, right sides facing and centers meeting. The center back meets the skirt seam. The right side seam of the bodice meets the seam line marking at the right corner of the skirt panel. Snip in the corners of the top skirt edge (arrow). Stitch the skirt. Neaten allowances and move into the bodice (d).

BurdaStyle

Benedikta