

# Dunja

By: BurdaStyle

<http://www.burdastyle.com/projects/dunja>

---



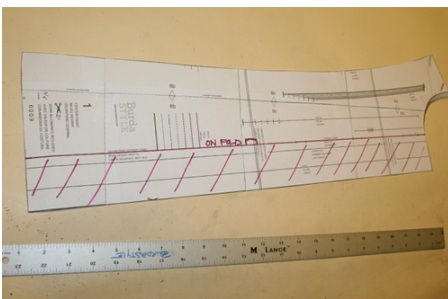
With a few fairly simple modifications, the JJ blouse can become the sugary confection we call the Dunja top, which is perfect for celebrating that the April showers have turned to May flowers. We used chiffon for the outer shirt, and a matching silk charmeuse for the camisole. The chiffon ruffles couldn't be a prettier frame for your pretty face! Check out our instructions that explain the modifications you need to make with the JJ blouse, good luck, and have fun!

## Materials

silk chiffon, silk charmeuse, lingerie snaps, hook and eye

---

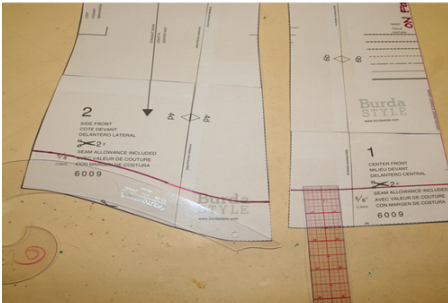
## Step 4



First, eliminate the center front facing. Fold back or cut the pattern piece along the 'Center Front' line, which now becomes 'Center Front on Fold'.

---

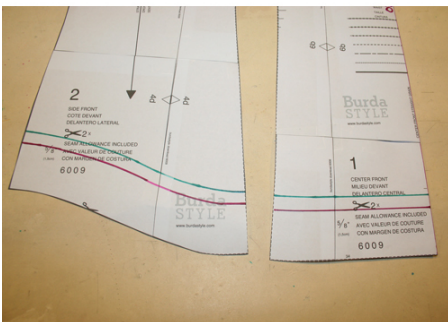
## Step 5



For the chiffon (outer) shirt, the neckline and armholes remain the same; only the hem changes. Mark off  $1\frac{3}{8}$ ' from the original hem, shown in hot pink, on all four bodice pieces (center and side front, center and side back).

---

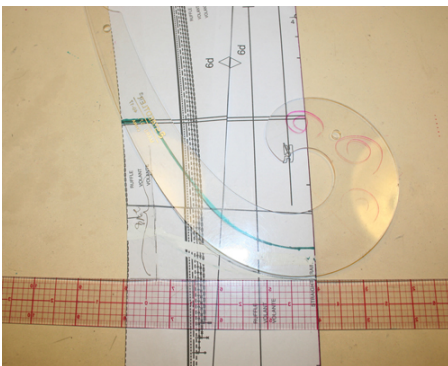
## Step 6



The charmeuse (undershirt) hemline should be at least  $\frac{3}{8}$ ' shorter than the chiffon, so it doesn't peek out. Mark accordingly on all four bodice pieces.

---

## Step 7

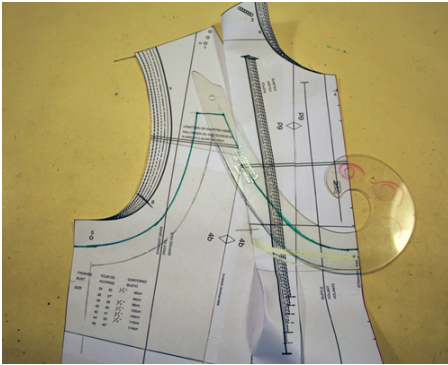


Front neckline, undershirt: Mark  $7\frac{1}{2}$ ' down center front from the original cut line, and draw a perpendicular line. Mark off the  $\frac{5}{8}$ '

seam allowance from the princess seam, measure up  $2\frac{3}{8}$ " from the perpendicular line. Now, use your French curve to draw a curve as shown.

---

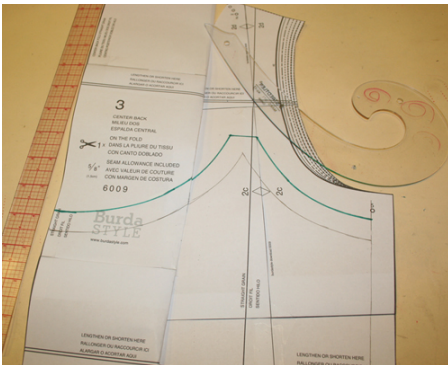
### Step 8



Extend the bust notch marks. Fold back the seam allowance on the center front piece, and match/tape to the side front. Use your French curve to continue the neckline to the side front piece. Drop armhole about an inch and draw a new armhole curve. Add seam allowance (shown in green).

---

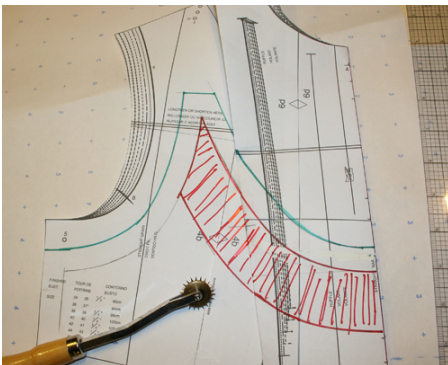
### Step 9



Fold back princess seam allowance of center back piece between 'Lengthen or shorten here' lines. Tape together center and side back pieces. From the top cut line of the center back piece, measure down  $9\frac{3}{4}$ ". Draw curves approximately as shown, remembering to drop the back armhole 1" as well. Add seam allowances.

---

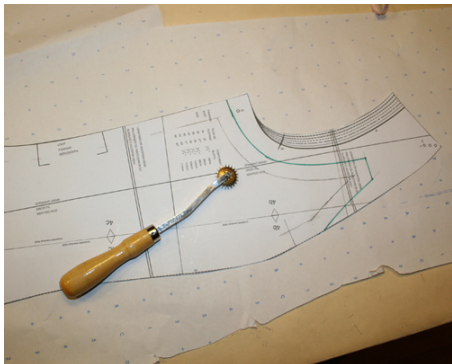
### Step 10



Make facings for front and back necklines: fold back princess seam allowance, tape together, and draw a line 1  $\frac{3}{4}$ " below neckline. Trace off the pattern pieces created by neckline and armhole, and newly drawn line (shown in red). Repeat for front and back.

---

## Step 11



Trace out the charmeuse pieces separately using dot paper and a tracing wheel.

---

## Step 12



Ruffles: There are three ruffles all on straight grain. The bottom layer is 51" x 5". Second layer is 51" x 3  $\frac{1}{2}$ ". Zig zag baby hem one long side and both short sides of these ruffles. For the top ruffle, draw a rectangle 49" x 2  $\frac{3}{4}$ " and use your French curve to round the edges as shown. Zig zag baby hem the curved edge. Give a basting stitch to each ruffles' raw edge.

---

## Step 15



Sewing the chiffon shirt: Sew all princess seams and the right side seam using thin French seams. Baby hem the left side front and back seam allowance. Iron a  $\frac{1}{2}$ ' strip of fusible along the wrong side of the front side seam. Fold, and press along the edge of the fusible. Right sides facing of the front and back pieces, stitch from top of armhole and down  $1\frac{1}{2}$ ', and from hem up  $1\frac{1}{2}$ '. In the opening, evenly space 5 clear lingerie snaps and sew in. Baby hem bottom of the blouse.

---

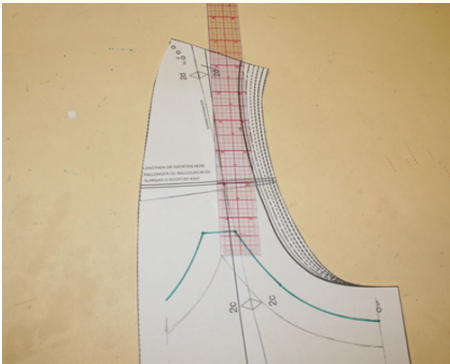
## Step 16



Bias bind the armholes. Cut a slit  $4\frac{1}{2}$ ' down center back and finish with bias binding. Gather the ruffles to match the length of the neckline edge. With right sides facing you, layer and pin the longest ruffle, then the mid ruffle, then the shortest ruffle. However, for the shortest ruffle, offset the back right side  $3\frac{1}{2}$ ' from center back; the other end will meet it and connect with a snap. Baste ruffles to neckline. Then, finish with turned bias binding. Apply a hook and eye to the top center back, and a small clear lingerie snap to the ends of the short ruffle.

---

## Step 17



Now for the camisole. Repeat instructions of Step 15, but use regular seams instead of French. Press seams apart. With right sides facing, stitch the facings to the necklines. Finish the armholes, while making straps, with bias binding. You can find the correct strap length by measuring the distance from the neckline/armhole edge to the original JJ shoulder, adding front and back.

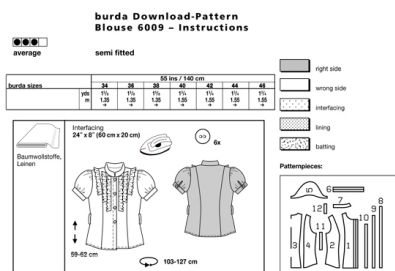
---

## Step 18



And wah-la. No one says beauty is easy, but sometimes it's worth all the effort.

## Step 1



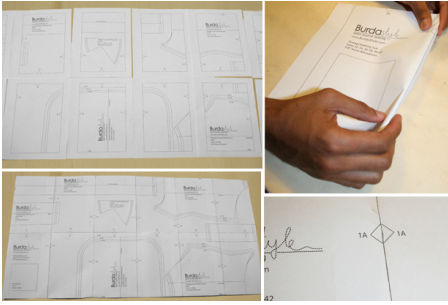
### PATTERN

- 1 Center front piece 2x
- 2 Side front piece 2x
- 3 Center back piece 1x
- 4 Side back piece 2x
- 5 Sleeve 2x \*NOT NEEDED
- 6 Sleeve cuff 2x \*NOT NEEDED
- 7 Stand-up collar 2x
- 8 Ruffle I 2x
- 9 Ruffle II 2x
- 10 Ruffle III 2x
- 11 Loop 1x
- 12 Slit facing 2x

Fabrics: Cotton, linen fabrics

PLEASE NOTE! You will need to download the JJ 6009 pattern in order to create the Dunja blouse. After you cut out your pattern according to your size, you will follow steps 4 through 12 to manipulate the pattern in order to achieve the final look. Good luck! We have also included several links to our techniques along the way to help you out with the sewing.

## Step 2

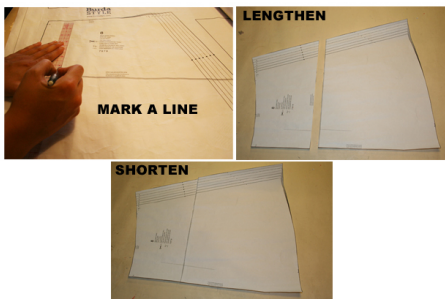


The patterns can be printed out at the copy shop. If you decide to print them at home, follow the instructions:

Paper cut for ANSI A (German DIN A4) prints:

The patterns are printed out on 25 sheets with a thin frame. Wait, until all sheets are printed out. Arrange the sheets so that they fit together (see extra page with the overview of the prints). Cut off the single sheets on the upper and right edge along the thin frame lines. Begin with the left lower sheet and then glue the parts in the frame lines together precisely.

### Step 3



#### ADJUST PATTERN SIZES

Select your size according to the Burda-dimension table: Dresses, blouses, jackets and coats according to the bust size, trousers and skirts according to the hip width. Change the pattern if necessary, to fit your measurements if they deviate from the Burda-dimension table.

Refer to our 'Adjust patterns for mixed sizes' technique

Size 4 to 14 (EU 36 to EU 46)

The button holes of piece 1 are marked according to size 2 (EU 34). For the bigger sizes mark the lowest buttonhole in the same length to the waist sign like size 2 (EU 34). The upper buttonhole is positioned the same for all sizes. The other buttonholes have to be distributed in equal lengths in between the upper and the lowest button hole.

#### LENGTHENING OR SHORTENING THE PATTERN PIECES ACCORDING TO YOUR SIZE

Our pattern is calculated for a height of 5'6" 6' (168 cm). If you are taller or shorter, you may adjust the pattern to fit your size. Choose your size at the lines marked "lengthen or shorten here". Thus the proper fit is preserved. Make sure that you adjust all pieces of one pattern by the same amount at the same lines.

How to lengthen and shorten pattern pieces:

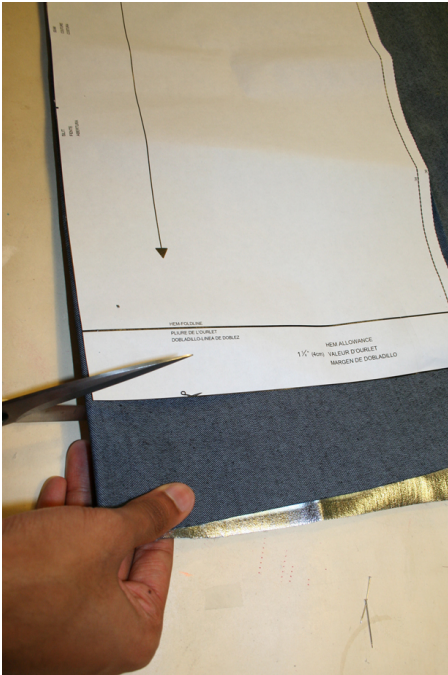
Cut the pattern pieces along the marked lines.

To lengthen, slide the two halves of the pattern piece as far apart as necessary.

To shorten, overlap the two halves of the pattern piece as far as necessary. Even out the side edges.

Now you should be ready to manipulate the pattern!

## Step 13



### CUTTING OUT

**FOLD** (â' â' â' â') means: here is the center of a pattern piece but never a cut edge or a seam. The piece should be cut double, with the fold line forming the centre line. Pattern pieces that are outlined with a broken line in the cutting diagrams are to be placed face down on the fabric. The cutting diagrams on the pattern sheet show how the pattern pieces should be placed on the fabric.

The cutting diagrams show the placement of the pattern on the fabric

For a single layer of fabric, the pattern pieces are pinned to the right side. For double layers of fabric, the right sides are facing and the pattern pieces are pinned to the left side. The pattern pieces that are shown in the cutting diagram, extending over the fold of the fabric, should be cut last from a single layer of fabric.

---

## Step 14

**SEAM AND HEMLINE ALLOWANCES** are included on an average:

5/8" (1.5 cm) for all edges and stitches.

Using burda copying paper, transfer the lines and signs of the pattern onto the left fabric side. You will find instructions in the packaging.

### Interfacing

Cut out the interfacing according to the directions and press it onto the wrong fabric side.

### Sewing

While sewing the right fabric sides are facing. Transfer all lines of the pattern onto the the right fabric side using basting stitches.