

Lydia - version 3 - shirt with draped neckline

By: lauriana

<http://www.burdastyle.com/projects/lydia-version-3-shirt-with-draped-neckline>

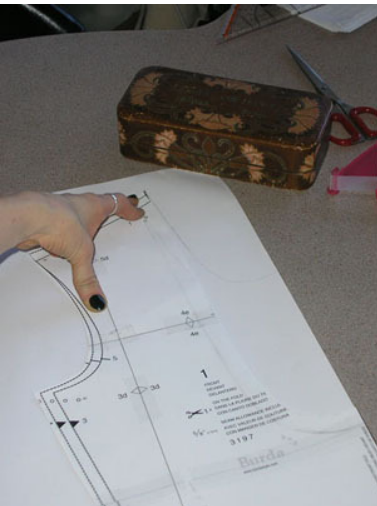


Another variation on Lydia ;) I've made a how to for it (I just found out the pictures are too high, so I will be adapting it)

Materials

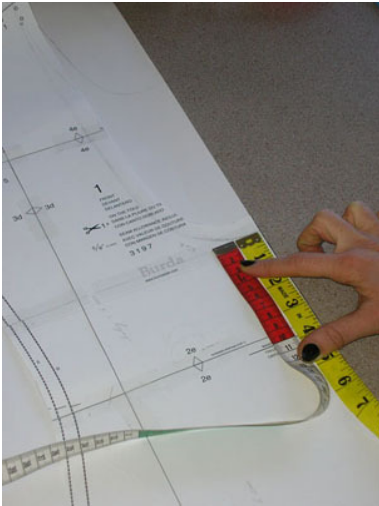
very thin knit

Step 1



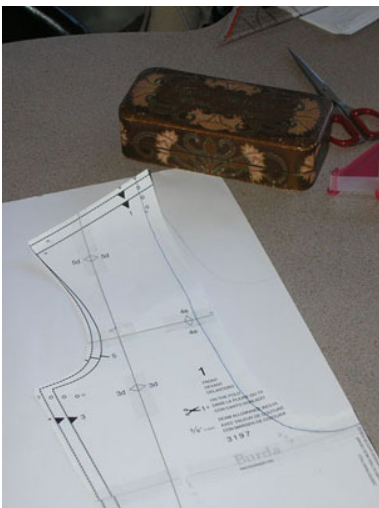
Cut out the pattern in your size and make adjustments necessary for a good fit. I traced the original pattern onto a piece of paper, for future use

Step 2



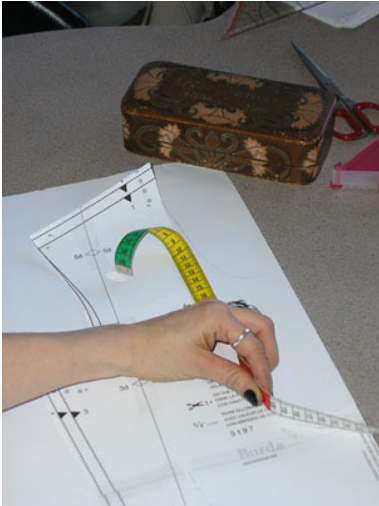
Determine how deep you want the neckline to be. Mine cuts to 10 cm above the waistline. To keep the fit of the shirt intact, don't go below the waistline.

Step 3



draw a curve from the point you picked to the stichline at the shoulder (1,5 cm inwards at pattern edge). This will be the stitchline between shirt and drape. Add seam allowance (1,5 cm) along curve.

Step 4



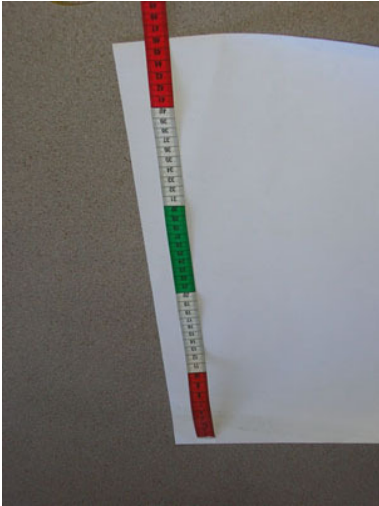
measure the stitchline on the front pattern piece.

Step 5



Measure the stitchline on the back neckline. Add the two measurements up and subtract 3 cm (those were the shoulder seam allowances), this is the new half neckline measurement.

Step 6



On an extra sheet of paper, draw a rectangle. The length of it is the half neckline measurement plus 1,5 cm. The width in my example is 35 cm. (I'm sorry about the camera angle, it really is a rectangular piece of paper). This is the pattern for the drape, including seam allowance. Cut it out of the fabric with the 35 cm side on the fold.

Step 7



Assemble front, back and sleeves according to the instructions. Then, stitch the drape together at the 35 cm ends (right sides facing) forming a circle. Fold it in half with the wrong sides together. You should now have a circular piece showing only the good side of the fabric. Pin this piece to the neckline of the shirt with the seam at center back. It should be pinned on the outside of the shirt, having all three raw edges even.

Step 8



Stitch the drape onto the neckline, finish and trim seam allowance and press toward shirt.

BurdaStyle

Lydia - version 3 - shirt with draped neckline