

# Gold Ruffle Clutch

By: BurdaStyle

<http://www.burdastyle.com/projects/gold-ruffle-clutch>

---



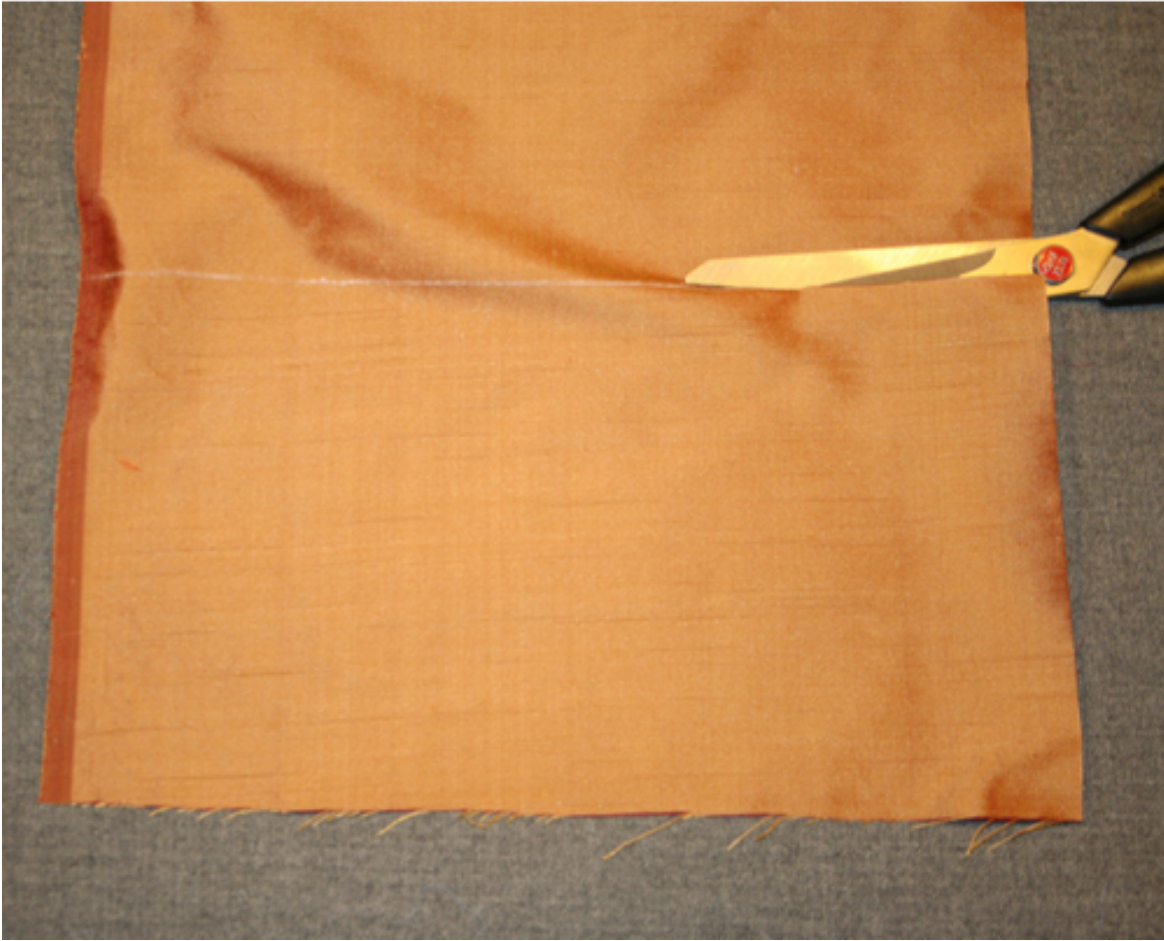
Perhaps you are making your Prom dress, perhaps you are buying new, perhaps you are revamping vintage. Whatever your path, making your own clutch for the big night is a fun way to get a little DIY action into your ensemble. If you don't want to make the whole clutch from scratch, you could remake an existing clutch using the following ideas.

## Materials

taffeta, china silk for lining, vintage and/or costume jewelry

---

## Step 1



For the top layer of clutch: Cut fabric: 11" x 11 1/2". Pin stiff fusible on and press it. Then, from the long direction, cut the piece in half, making 2 pieces 11" x 5 3/4".

---

## Step 2



Ruffles: Cut a rectangle  $10 \frac{7}{8}$  x  $13 \frac{1}{2}$  and one  $9$  x  $9$ . Mark both sides of ruffles  $2$  from edge on the wrong side.

---

### Step 3



Put 1â strip double fusible on edge, fold it to the marked line, and press with iron. Repeat for both sides of both ruffles.

---

#### **Step 4**



Mark center on ruffles. Give two rows of basting stitches  $\frac{1}{4}$ " from center line. Gather by pulling the bobbin thread.

---

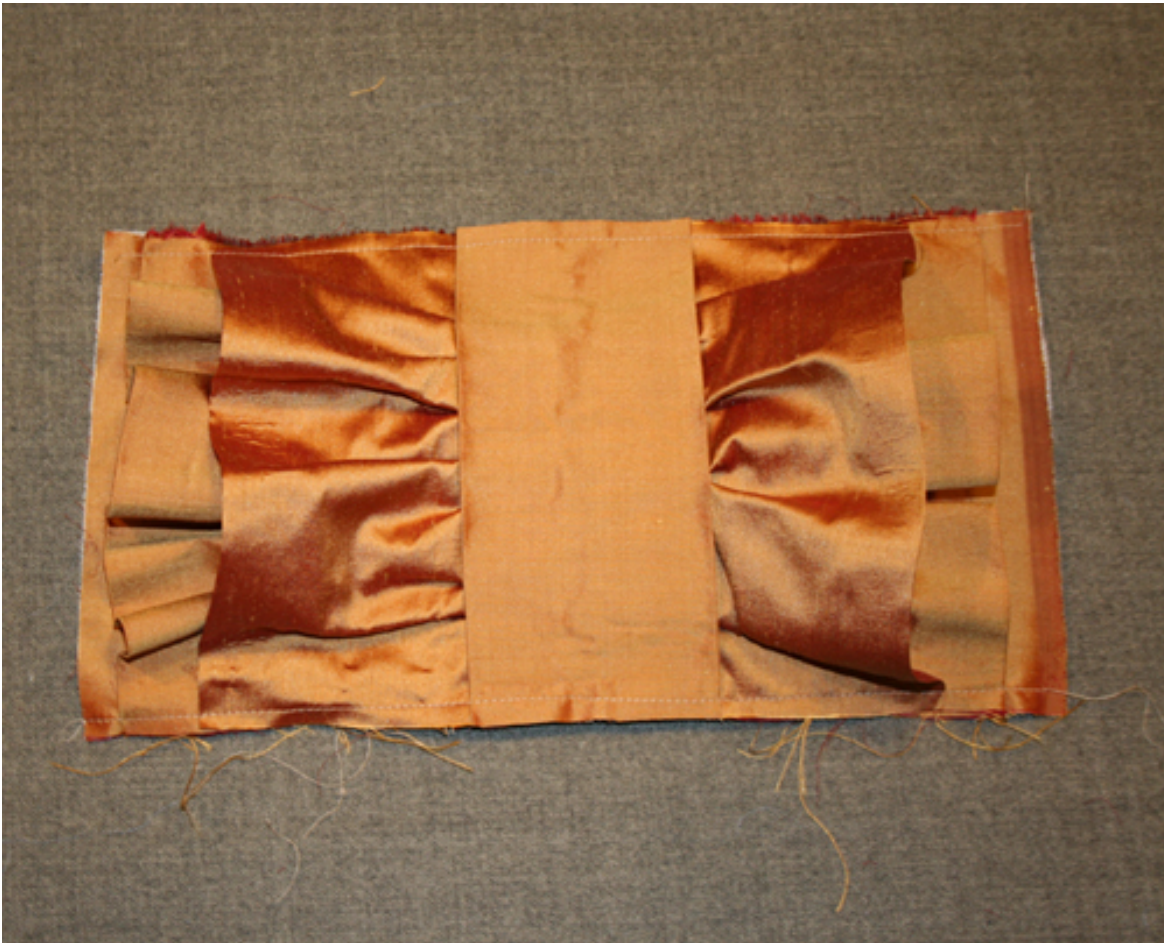
## Step 5



Position the big ruffle on one layer of the clutch top, then the smaller ruffle. Pin in place.

---

## Step 6



Body of clutch: Cut strip 5 1/4" x 3" and mark center. Fold both sides to center and press. Put strip on center of the clutch and pin. Sew both long sides at 1/4".

---

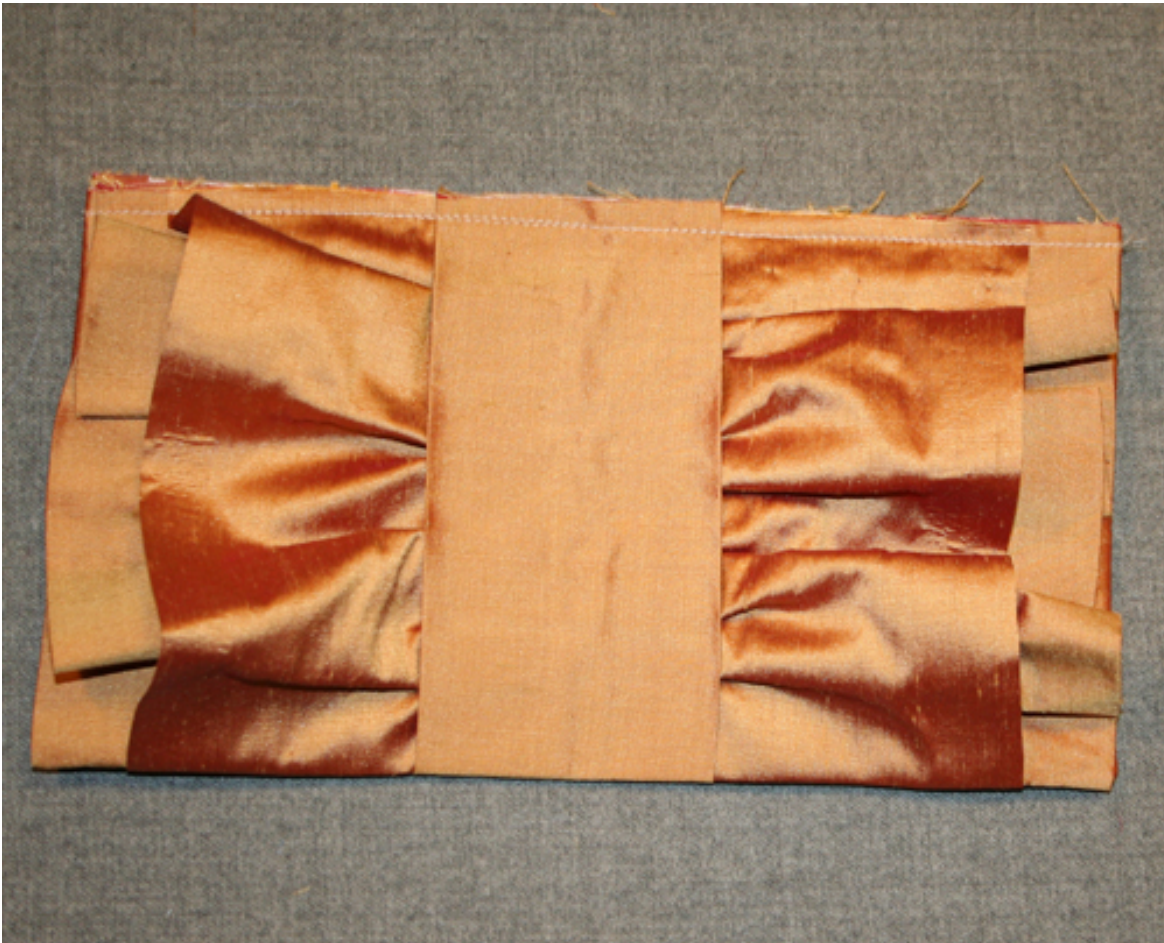
## Step 7



Cover top of clutch with second part, right sides facing, and sew around leaving one long side open.

---

## Step 8



Turn the right sides out and stitch the open end at  $\frac{1}{4}$ ".

---

## Step 9



Cut two rectangles  $12\frac{1}{2} \times 11\frac{3}{4}$ , one of them with stiff fusible. On  $12\frac{1}{2}$  side sew pieces together  $2\frac{1}{4}$  from edge as shown, right sides facing, leaving a hole in the middle, which we'll use to turn the purse right side out later.

---

## Step 10



Turn, and press the seam, giving a crease straight across the opening. Create another crease on the fused piece, about ½" from the stitch line, as shown.

---

## Step 11



Fold the fused (self) piece as shown, bringing the raw edge ½" past the crease.

---

## Step 12



Fold the unfused (lining) piece so its fold is matching the fused piece's fold. Trim the excess of the lining piece at the raw edge.

---

### Step 13



Unfold the body of the clutch. Pin the top flap to the fused side, right sides facing, raw edges meeting.

---

## Step 14



Bring the raw edge of the lining side to meet the other raw edges.

---

## Step 15



Sew the seam at  $\frac{1}{2}$ â.

---

## Step 16



Pull the clutch right side out, through the opening we left. Steam the crease of the top flap, being careful not to crush the ruffle.

---

## Step 17



Through the opening, pull the clutch wrong sides out again. Sew the short sides of the fused piece together. Repeat for the lining piece.

---

## Step 18



Here are your stitches.

---

**Step 19**



Again, turn the clutch right side out via the opening. Close the opening with an invisible stitch. Steam the clutch.

---

## Step 20



Add a piece of vintage and/or costume jewelry to your clutch, and you are ready for a night on the town.

---

**BurdaStyle**

*Gold Ruffle Clutch*