

# Natalie

By: BurdaStyle

<http://www.burdastyle.com/projects/natalie>



This blouse is covered in lovely details: the raglan sleeves finish to a beautiful pleated bell, the front princess seams fall away to loosely release, and, of course, the lace inset at the neckline sets off your pretty face. We made ours in a raw silk shantung, but you could also try it in a cotton or crepe.

## Materials

silk shantung, lace, zipper, interfacing

## Step 1

**burda Download-Pattern**  
**6037 - Instructions**

●●□□ easy fitted

		55 ins / 140 cm						
burda sizes		48	50	52	54	56	58	60
yds	2 1/2	2 1/2	2 1/2	2 1/2	2 1/2	2 1/2	2 1/2	2 1/2
	m	2,10	2,10	2,10	2,20	2,20	2,20	2,20
Contrasting fabric	1/2	1/2	1/2	1/2	1/2	1/2	1/2	1/2
	m	0,40	0,40	0,40	0,40	0,40	0,40	0,40

→ with nsp

Interfacing  
90 cm x 40 cm

nahtverdeckt:  
48-52: 40 cm; 54-60: 60 cm

Seide, leichte Baumwollstoffe, Kreppstoffe  
Garniturstoff:  
Chiffon, Spitzenstoff

↑  
67-72 cm

↻ 144-181 cm

- 1 Center front piece 1x
- 2 Side front piece 2x
- 3 Back piece 1x
- 4 Front sleeve 2x
- 5 Back sleeve 2x
- 6 Sleeve cuff 2x

7 Front inset 3x

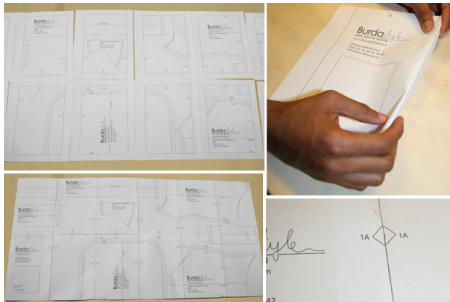
8 Back inset 3x

Fabric: Silk, light cotton fabrics, crepe fabrics

Contrast fabric: Chiffon, lace fabric

---

## Step 2



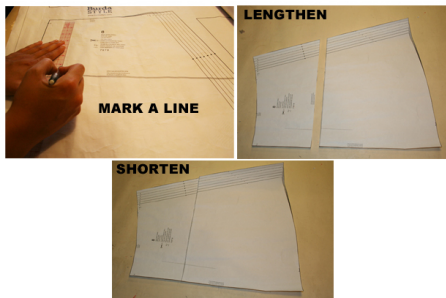
The patterns can be printed out at the copy shop. If you decide to print them at home, follow the instructions:

Paper cut for ANSI A (German DIN A4) prints:

The patterns are printed out on 32 sheets with a thin frame. Wait until all sheets are printed out. Arrange the sheets so that they fit together (see additional page with the overview of the prints). Fold the single sheets on the upper and right edge along the thin frame lines. Begin with the left lower sheet and then tape the frame lines together precisely.

---

## Step 3



### ADJUST PATTERN SIZES

Select your size according to the Burda-dimension table: dresses, blouses, jackets and coats according to the bust size, trousers and skirts according to the hip width. Change the pattern to fit your measurements if they deviate from the Burda-size chart. Cut out the pattern 1 to 8 for the blouse according to your size.

Refer to our "Adjust patterns for mixed sizes" technique

### LENGTHENING OR SHORTENING THE PATTERN PIECES

Our pattern is calculated for a height of 5'6" 6'0" (168 cm). If you are taller or shorter, you can adjust the pattern pieces along the lines marked "lengthen or shorten here". This way the proper fit is maintained. Always adjust all pattern pieces along the same line to the same degree.

How to lengthen and shorten pattern pieces:

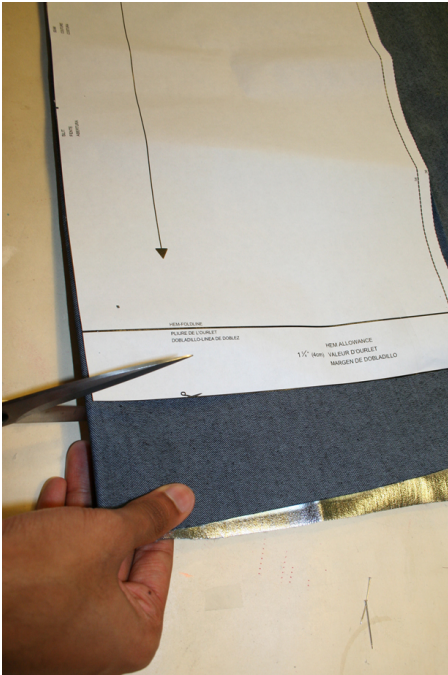
Cut the pattern pieces along the marked lines

To lengthen, slide the two halves of the pattern piece as far apart as necessary.

To shorten, overlap the two halves of the pattern piece as far as necessary. Blend the side edges.

---

## Step 4



### CUTTING OUT

FOLD (à à à à) means: Cut on the fold, the fold being the center of the pattern piece, but never a cut edge or seam.

The piece should be cut double, with the fold line forming the center line. Pattern pieces are outlined with a broken line in the cutting diagrams are placed face down on the fabric. The cutting diagrams on the pattern sheet show how the pattern pieces should be placed on the fabric.

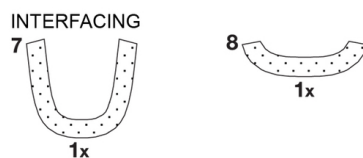
The cutting diagrams show the placement of the pattern on the fabric.

For a single layer of fabric, the pattern pieces are pinned to the right side. For double layers of fabric, the right sides are facing and the pattern pieces are pinned to the wrong side. The pattern pieces that are shown extending over the fold of the fabric in the cutting diagram should be cut last from a single layer of fabric.

Contrasting fabric: Cut the pieces 7 and 8 once from the contrasting fabric (chiffon); additionally, cut pieces 7 and 8 twice from the blouse fabric.

---

## Step 5



SEAM AND HEMLINE ALLOWANCES are included on an average:

No seam and no allowances at the long edges of the pleated piece; and don't neaten the edges. Otherwise 5/8" (1.5 cm) for all edges and stitches. Using BURDA copying paper, transfer the lines and signs of the pattern onto the wrong fabric side. Instructions can be found in the packaging.

## SEWING

While sewing, the right sides of the fabric are facing.

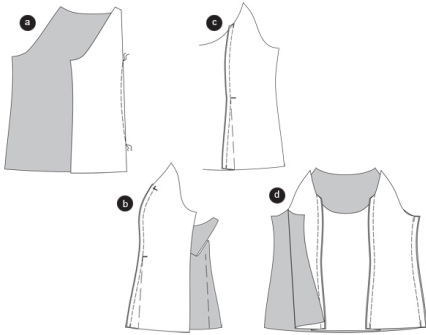
Transfer all lines of the pattern onto the right side of the fabric using basting stitches.

## INTERFACING

Press the interfacing piece according to the cutting diagram onto the wrong side of the fabric.

---

## Step 6



## BLOUSE

### Back waist band darts

Pin the darts and stitch to a point. Knot threads. Press the darts towards the center back (a)

### FRONT PRINCESS SEAMS / PLEATS

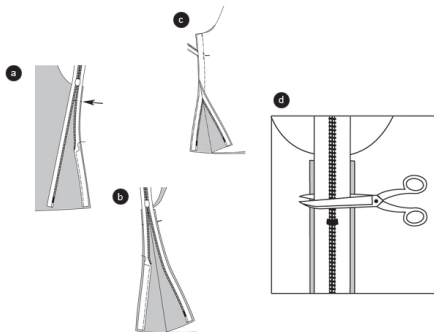
Position the side front pieces on the center front piece, right sides facing. Pin the princess seams (seam 1), the cross lines meet. Stitch (b). Baste the pleat lines together from the cross line to the bottom. Trim allowances and neaten. Press the allowances and pleats inside the center front piece ©. Open the basting stitches along the pleats ©.

### RIGHT SIDE SEAM

Position the front piece on the back piece, right sides facing. Pin the right side seam (seam 2) and stitch. Trim allowances and press them apart. Trim the allowances along the left side.

---

## Step 7



### ZIPPER (hidden) / LEFT SIDE SEAM

The zipper will be hidden behind the seam edges and will therefore be invisible. It should be a little longer than the opening. It will be applied before stitching the seam above the opening. Use a zipper foot.

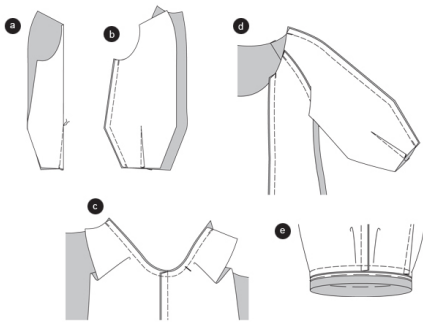
Open the zipper and pin it with its right side on the allowance of an opening edge. The little teeth have to be exactly positioned on the marked opening edges (a). Stitch the zipper, using a zipper foot, along the zipper teeth. Stitch the zipper in the same way on the allowance of the other opening edge (b). Stitch along the opening edges from the top to the opening sign (arrow). The hemline overlaps  $\hat{A} \hat{1} \hat{2} \hat{a} \hat{c}$  (1.5 cm). Since the zipper teeth tend to curl up, the zipper foot will keep them flat. Close the zipper.

### LEFT SIDE SEAM

Position the front piece on the back piece, right sides facing. Stitch along the left side seam from the top to the opening sign. Pull the zipper slightly. Secure seam ends. Press allowances apart. If necessary, cut the overlapping zipper end and secure with some stitches (5a).

---

## Step 8



### SLEEVES

Pin the darts on front and back sleeve and stitch to a point. Knot threads. Press darts to the side (a).

### UNDER SLEEVE SEAMS

Position the front and back sleeve pieces together, right sides facing. Pin the under sleeve seams (seam 3) and stitch. Trim allowances, neaten and press to the side (b).

### APPLY SLEEVES

Pin the sleeve on the armhole, right sides facing. The under sleeve seam meets the side seam. The cross lines 5 of sleeve and front piece meet. Pin sleeve (seam 4) and stitch. Trim allowances, neaten and press to the side (c).

### TOP SLEEVE SEAMS

Position the front and back piece together, right sides facing. Position the sleeve pieces together. Pin the upper sleeve seams (seam 6) and stitch. Trim allowances, neaten and press to the side (d).

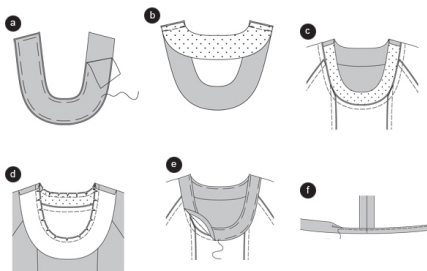
### SLEEVE CUFF

Stitch closed the cuff into a circle. Press allowances apart.

Pin the cuff on the bottom sleeve edge (seam 7), right sides facing. The cuff seam line meets the bottom sleeve seam. Stitch. Trim allowances and press inside the cuff. Turn the allowance of the long edge inside and press. Fold the cuff inside along the fold line, pin along the seam line and topstitch narrowly (e).

---

## Step 9



### INSET

Position the front and back insets (made of contrasting fabric) on the interfaced insets, right sides facing. Pin the edges and baste together. Sew as if it was only one layer of fabric (a).

Position back interfaced inset on the front non-interfaced inset, right sides facing. Stitch shoulder seams (seam 8). Stitch the shoulder seams the same way on the non-interfaced insets. Press allowances apart (b).

Pin the interfaced inset on the neckline (seam 9), right sides facing. Shoulder seams meet. Stitch. Trim allowances and press inside the inset (c).

Pin the non-interfaced inset on the interfaced inset, right sides facing. Shoulder seams meet. Stitch the neckline edges together. Trim allowances and snip in (d).

Turn the inset. Pin the edge and press. Pin the inner inset (turned over) on the seam line and topstitch narrowly. Topstitch the neckline narrowly (e).

### HEMLINE

Press the hemline, fold and pin. Topstitch the hemline narrowly (f).

---