

The Stinchcomb

By: BurdaStyle

<http://www.burdastyle.com/projects/the-stinchcomb>



Every man needs at least one beautiful jacket in his wardrobe, and we finally have the pattern for you! This classic, elegant cut is ready for fall nights and holiday events. Of course, making your own suit jacket is a chance to personalize: perhaps try playing with a fun lining on the inside. We can't wait to see what you do.

Materials

Wool suiting, silk lining, buttons, interfacing, shoulder pads, we also used horsehair in the lapels and collar.

Step 1

burda Download-Pattern
Jacket 6026 - Instructions

●●●● advanced semi fitted

burda sizes	46 ins / 114 cm										56 ins / 140 cm									
	44	46	48	50	52	54	56	58	60	44	46	48	50	52	54	56	58	60		
pts	27½	27½	27½	27½	27½	27½	27½	27½	27½	27½	27½	27½	27½	27½	27½	27½	27½	27½		
m	1,85	1,85	1,85	1,85	1,85	1,85	1,85	1,85	1,85	1,85	1,85	1,85	1,85	1,85	1,85	1,85	1,85	1,85		
l	1,85	1,85	1,85	1,85	1,85	1,85	1,85	1,85	1,85	1,85	1,85	1,85	1,85	1,85	1,85	1,85	1,85	1,85		

→ with nap

Interfacing
0,90 m x 2,70 m

8x
2x

gabardine, lightweight wool, linen

JACKET

- 1 Front piece 2x
- 2 Back piece 2x
- 3 Side piece 2x
- 4 Upper sleeves 2x
- 5 Undersleeves 2x
- 6 Top collar 1x
- 7 Under collar 1x
- 8 Collar stand 2x
- 9 Front facing 2x
- 10 Back facing 1x
- 11 Pocket flap 1x
- 12 Pocket pouch 1x
- 13 Pocket welt 4x
- 14 Pocket pouch 2x
- 15 Flap 4x

Step 2

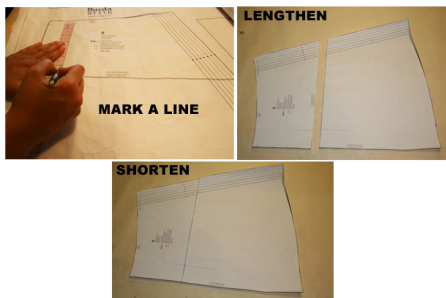


The patterns can be printed out at the copy shop. If you decide to print them at home, follow the instructions:

Paper cut for ANSI A (German DIN A4) prints:

The patterns are printed out on 64 sheets with a thin frame. Wait until all sheets are printed out. Arrange the sheets so that they fit together (see additional page with the overview of the prints). Fold the single sheets on the upper and right edge along the thin frame lines. Begin with the left lower sheet and then tape the frame lines together precisely.

Step 3



ADJUST PATTERN SIZES

Select your size according to the Burda-dimension table: dresses, blouses, jackets and coats according to the bust size, trousers and skirts according to the hip width. Change the pattern to fit your measurements if they deviate from the Burda-size chart.

Cut out the pattern according to your size.

Refer to our 'Adjust patterns for mixed sizes' technique

Sizes 36-50 (EU 46-60)

The top buttonhole on the front piece is marked for sizes 34-44 (EU 44-54). For all other sizes, mark the button hole in the same space to the fold line of the lapel as for sizes 34-44 (EU 44-54). Position the button hole 2mm from the center front.

LENGTHENING OR SHORTENING THE PATTERN PIECES

Our pattern is calculated for a height of 5' 6" (168 cm). If you are taller or shorter, you can adjust the pattern pieces along the lines marked "lengthen or shorten here". This way the proper fit is maintained. Always adjust all pattern pieces along the same line to the same degree.

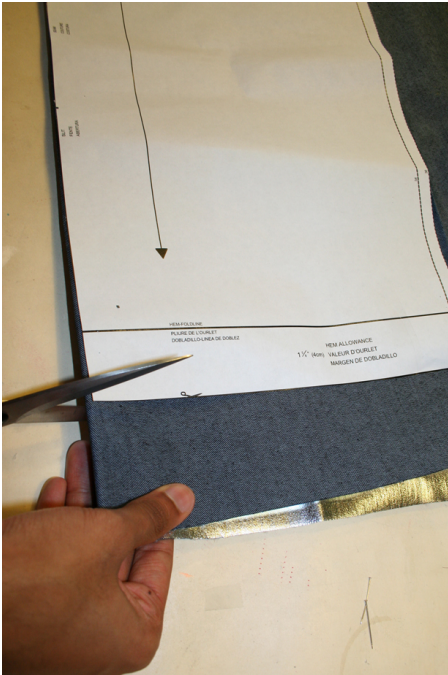
How to lengthen and shorten pattern pieces:

Cut the pattern pieces along the marked lines

To lengthen, slide the two halves of the pattern piece as far apart as necessary.

To shorten, overlap the two halves of the pattern piece as far as necessary. Blend the side edges.

Step 4



CUTTING OUT

FOLD (à l'â) means: Cut on the fold, the fold being the center of the pattern piece, but never a cut edge or seam. The piece should be cut double, with the fold line forming the center line. Pattern pieces that are outlined with a broken line in the cutting diagrams are to be placed face down on the fabric. The cutting diagrams on the pattern sheet show how the pattern pieces should be placed on the fabric.

The cutting diagrams show the placement of the pattern on the fabric.

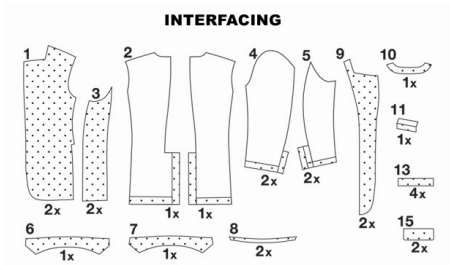
For a single layer of fabric, the pattern pieces are pinned to the right side. For double layers of fabric, the right sides are facing and the pattern pieces are pinned

to the wrong side. The pattern pieces that are shown

extending over the fold of the fabric in the cutting

diagram should be cut last from a single layer of fabric.

Step 5



SEAM AND HEMLINE ALLOWANCES are included on an average:

1_â' (4 cm) for the hemline, 5/8â' (1.5 cm) for all edges and stitches. Using BURDA copying paper, transfer the lines and signs of the pattern onto the left fabric side. Instructions can be found in the packaging.

SEWING

While sewing, the right sides of the fabric are facing.

Transfer all lines of the pattern onto the right side of the fabric using basting stitches.

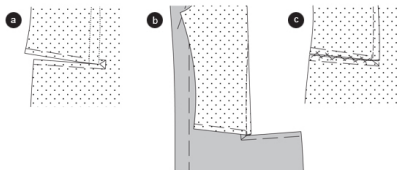
INTERFACING

Press the interfacing piece according to the cutting diagram onto the wrong side of the fabric.

LINING

Cut the lining according to the pattern pieces 4,5, 14 and 16 to 21. See the cutting diagrams.

Step 6



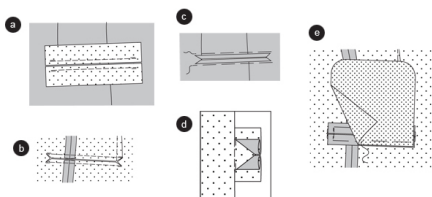
JACKET

Front piece

Cut the front pieces to the front dart line along the cutting lines (a). Stitch the darts and press towards the center front (b). Position the edges together and stitch using herringbone stitch ©.

Stitch the front princess seams (seam 1). Press allowances apart.

Step 7



Welt pockets with flaps

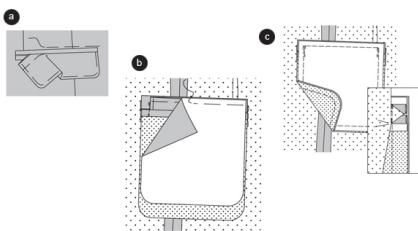
The end of the front pocket and the welt seam line, both marked on piece 1, are to be considered for size 34. For sizes 36-50, mark the end of the front pocket according to the position of the dart of relevant size.

Pin the welt strips onto the front piece, along both sides of the cut line. Then stitch \hat{a} ' (0.7 cm) wide. Secure seam ends. Cut the front piece between the stitch lines, cut the ends of the pockets at an angle into triangles (d). Do not cut into the welt (e). Fold the welt over the seam line and press.

Turn the welt to the inside. From the right side of the fabric, pin the welt on both sides in a way that they are equally wide (f). At the end of the cutting line, fold the triangles to the inside. Then, stitch the welt (g).

Pin the pocket pouch, made of lining, onto the left front piece so that the top edge is positioned above the seam line of the bottom welt. On the right fabric side, stitch along the seam line of the bottom piping; thereby catching the pocket pouch. Turn the pocket pouch downwards and press (h).

Step 8



FLAP

Right sides facing, pin together two pocket flaps, one with interfacing and one without. Stitch the side and bottom edges. Trim allowances. Turn the flaps and pin the edges, then press. Pin the open edge together.

From the right side of the fabric, move the flap under the top welt, then pin (a).

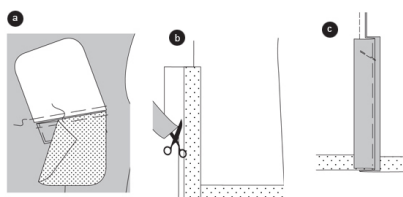
From the wrong side of the fabric, pin the pocket pouch (piece 14) above the seam line of the top welt. From the right fabric side, topstitch along the seam line of the top welt, thereby catching the pocket pouch and flap (b).

Position the pocket pouches together, trim and stitch together, thereby stitching over the triangles ©.

FLAP POCKET / TOP LEFT FRONT PIECE

For sizes 46-50 (EU 56-60) mark the pocket lines completely as marked for sizes 34-44 (EU 44-54). Fold the flap along the fold line, right sides facing. Stitch the short sides. Trim allowances. Cut the corners at an angle. Turn the flap. Pin the edges and press. Pin the open edges together. Trim the allowances of the open edges to \hat{a} ' (0.7 cm). trim the allowances of the pocket pouches (pieces 12 and 19) along the top edge to \hat{a} ' (0.7 cm).

Step 9



Pin the interfaced side of the flap onto the seam line. Position the lining pocket pouch onto the flap and pin. Pin the fabric pocket pouch in such a way that the even edge meets the flap. Topstitch $\hat{\text{a}}$ ' (0.7 cm) wide. The seam line remains $\hat{\text{a}}$ ' (0.5 cm) shorter on both ends than the seam line of the flap. Secure seam ends. Snip in the front piece according to the text and image 2a. Turn the pocket pouch through the cutting line to the inside. Fold the flap over the cutting line and press, pin. Stitch the pocket pouches together. Sew the flap edges by hand (a).

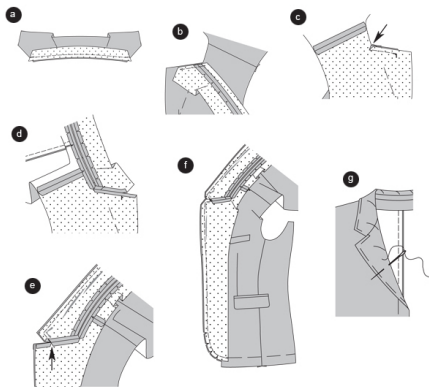
CENTER BACK SEAM / SLIT

On the left back piece, trim the overlapping slit edges $\hat{\text{a}}$ ' (1.5 cm) next to the line marked LEFT EDGE. Position the back pieces together, right sides facing. Pin the center seam line from top to bottom, then stitch from the top to the slit sign. Keep the slit pinned (b).

Press the allowances and slit edges inside the left back piece. Fold the facing of the right back piece along the FOLD LINE, then press. Position the facing and the underlap together. Then stitch at the top at an angle, thereby NOT catching the back piece ©.

Stitch the shoulder seams (seam 3), easing the back piece onto the front piece, without creating any gathers. Stitch the shoulder seams of the facings (seam 6).

Step 10



COLLAR / LAPEL

Stitch the collar stands onto the top collar and under collar (seam 4), right sides facing. Trim allowances, snip in and press apart. Narrowly topstitch both sides (a).

Stitch the under collar, from the cross line (seam 5) to the corner, onto the front piece. In the same way, stitch the top collar onto the front facings (seam 7) (b). Image shows the under collar.

Snip into the corners (arrow) of the allowances of front piece and facings. Stitch close to the stitch line ©. Image shows the front piece.

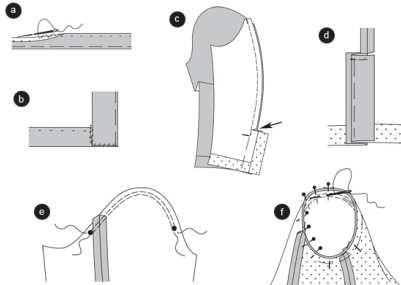
From corner to corner, stitch the under collar onto the neckline. In the same way, stitch the top collar onto the facing. Snip into the allowances and press apart (d). Image shows under collar.

Pin the edge of the top collar onto the under collar, the right sides facing. The top collar will be slightly bigger. Stitch collar pieces together. Do not catch the seam allowances of the lapel. Snip in the allowances of the front pieces and the facings from the cross line to the stitch line (arrow) (e).

Turn the allowances. From the cross line, pin the facings onto the front edges. The lapel will be slightly bigger. Stitch edges together. Trim allowances, cut the corners at an angle. Trim the allowance along the hemline, just $\hat{\text{a}}$ ' (2 cm) before the end of the facing (f).

Turn the collar. Turn the facings to the inside. Pin the edges, then press. Keep the under collar and the front pieces curved along the FOLD LINE. Pin the pieces, using bias staying stitches to stabilize the fabric. Position the seam lines of the collar and neckline together using backstitches. Stitch the princess seams on the back (seam 2). Press allowances apart (g).

Step 11



HEMLINE

Open the facings of the back slit. Turn the hemline to the inside and press (a). Sew the hemline by hand. Turn the facings of the slit inside again, then stitch onto the hemline (b).

SLEEVES / SLIT

Position the upper and under sleeves together, and pin the seam (seam 8) including the slit. Stitch the seam from the top to the slit sign. Secure seam ends. Keep the slit pinned. Cut into the corner of the allowance of the undersleeve, close to the stitch line (arrow) ©.

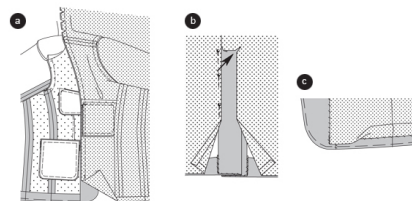
Above the cut line, press the allowances apart. Below the cut line, press the allowances into the upper sleeve. Turn the facing along the underlap (undersleeve), then pin and press. Along the slit edge, stitch the top edges of facing and underlap together, WITHOUT catching the sleeve (d)

To gather the curve of the sleeve, narrowly double stitch using basting stitches from * to *. Fold the sleeve lengthwise. Stitch the seams in the front of the sleeve (seam 9). Stitch the hemline of the sleeve (e).

APPLY THE SLEEVE

To gather the curve of the sleeve, tighten the bobbin threads slightly. Move the sleeve into the armhole, right fabric sides are facing. The cross lines 10 of upper sleeve and front piece have to meet. The cross line of the undersleeve has to meet the cross line of the side piece. The cross lines of the sleeve curve have to meet the shoulder seams. Distribute the eased width without creating puckers or pleats. Pin the sleeve on the wrong side and stitch. Press the allowances inside the sleeve. Apply shoulder pads and sew onto the allowances by hand.

Step 12



LINING

Stitch the welt pocket inside the left front piece as done on the right side of the jacket, but without flap. First, press a strip of

interfacing (measures 9" x 1" or 22 cm x 4 cm) onto the wrong side of the lining. Position the back pieces together, right sides facing. Stitch the center seam to the slit. Stitch the pleat as shown on the image. End stitching at the cross sign. Press the pleat to the side. Stitch the seams of the lining pieces. Make sure that seam numbers meet. Apply the sleeves. Fold the allowances of the bottom lining edges and the bottom sleeve edges to the inside and press.

Stitch the lining onto the facing, right sides facing (seam 14), and 4" (10 cm) above the hemline. Snip in the lining along the neckline at the back. Fold and press the allowances inside the lining. Position the lining inside the jacket, wrong sides facing (a).

Stitch the lining onto the facing of the underlap of the slit. Cut the other back piece of the lining crossways around 1" (1 cm) below the slit sign, trim according to the image and cut into the corner (arrow). Turn the edges inside; then stitch it next to the hemline onto the facing (b).

Slightly move the bottom lining edge towards the top. Then stitch onto the hemline. Gather the allowances of the lining to pleats; then stitch onto the facing. Do the same with the lining of the sleeves ©.

Work **BUTTONHOLES** into the left front piece. Apply the **BUTTONS**. When applying the small button sew the underlap as well.

BurdaStyle

The Stinchcomb