

Alessandra Pants

By: BurdaStyle

<http://www.burdastyle.com/projects/alessandra-pants>



For our business suit variation, we used the Hikaru jacket and Anita jeans as our base patterns. We wanted to do something smart and fashion-forward, but versatile enough to get lots of action in one's wardrobe, so we used different fabrics for the jacket and pant. We think the black buttons add a bold, classy statement while the collar detail gives a feminine touch. You will find instructions here how to adjust the Anita jeans pattern into the Alessandra variation, while you can find the Hikaru jacket variation here. Good luck!

Materials

Silk and wool blend

Step 1

burda Download-Pattern Pants 6006 – Instructions

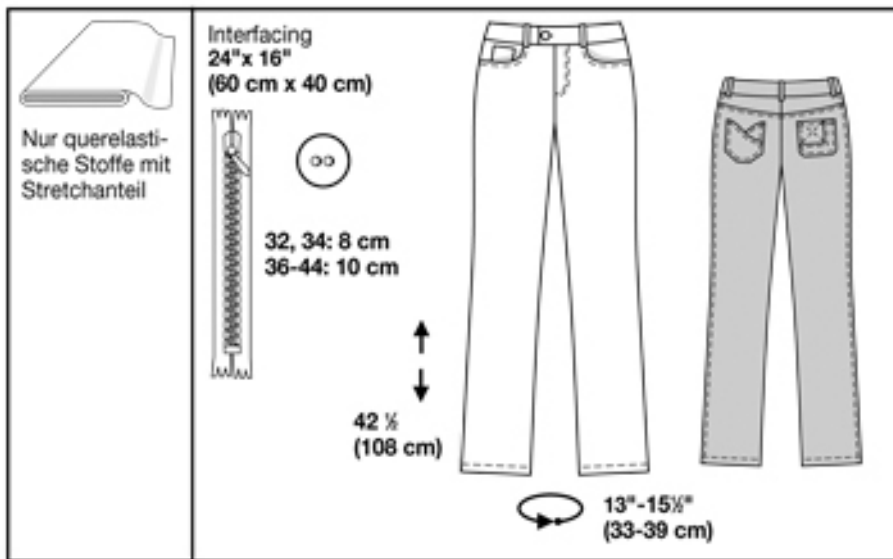
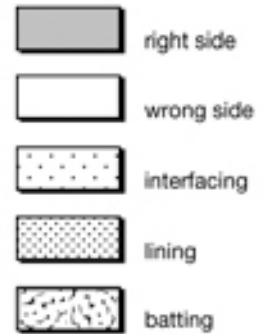


easy

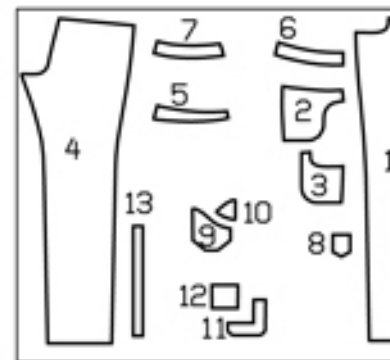
close fitting

burda sizes	yds	55 ins / 140 cm						
		32	34	36	38	40	42	44
		1 $\frac{1}{4}$	1 $\frac{1}{4}$	1 $\frac{1}{4}$	1 $\frac{1}{4}$	1 $\frac{1}{4}$	1 $\frac{1}{4}$	1 $\frac{1}{4}$
		→	→	→	→	→	→	→

→ with nap



Patternpieces:



- 1 Front pant piece 2x
- 2 Haunch yoke 2x
- 3 Pocket pouch 2x
- 4 Back pant piece 2x
- 5 Back yoke 2x
- 6 Front waistband 4x
- 7 Back waistband 4x

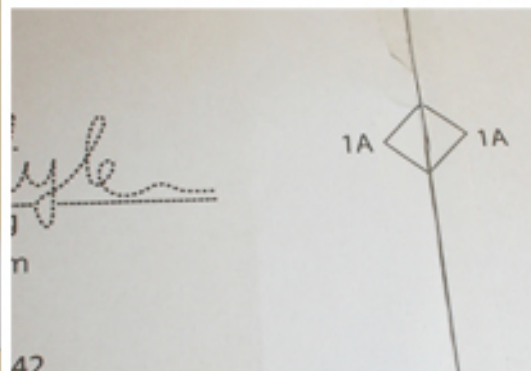
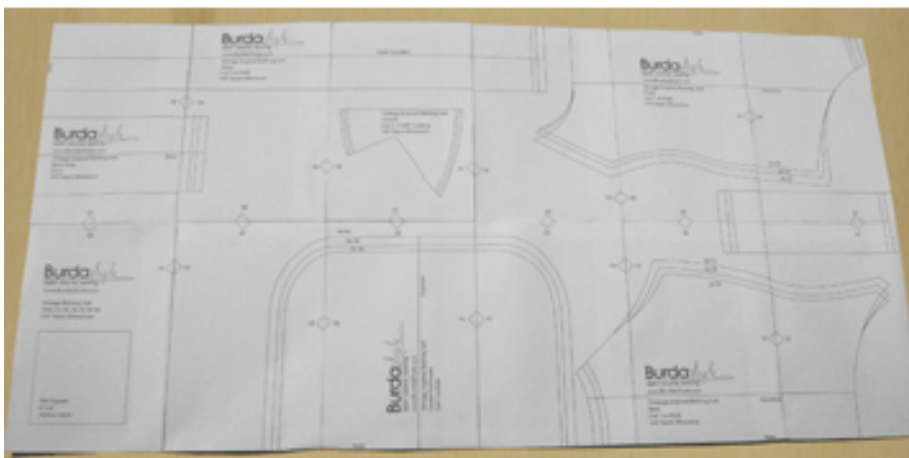
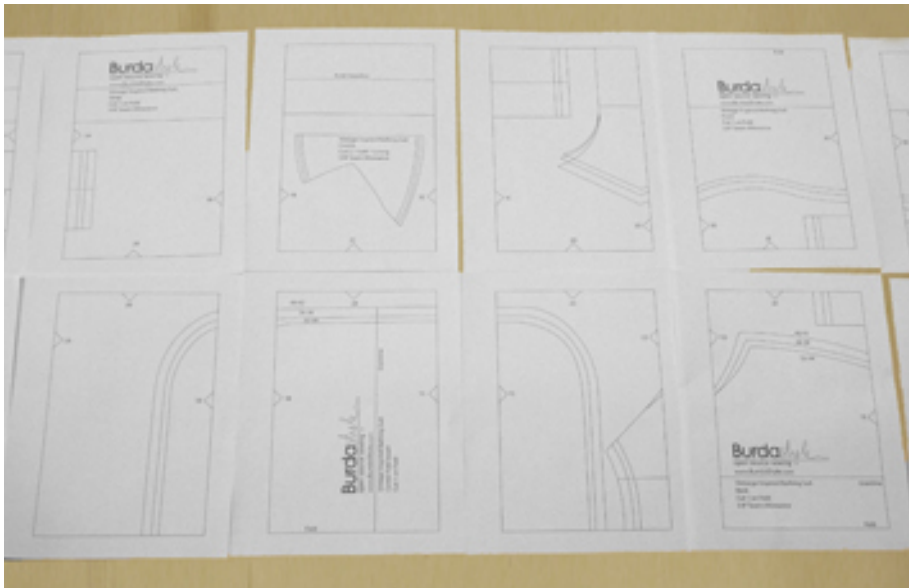
- 8 Right front pocket 1x *NOT NEEDED
- 9 Left back pocket 1x *NOT NEEDED
- 10 Left back pocket 1x *NOT NEEDED
- 11 Right back pocket 1x *NOT NEEDED
- 12 Right back pocket 1x *NOT NEEDED
- 13 Belt loop 1x *NOT NEEDED

Fabric: Suiting

PLEASE NOTE! You will need to download the Anita Jeans pattern to create the Alessandra pants. We left out the jeans detailing for a more polished, professional look. We left off the back pockets, all the topstitching, and the belt loops. Instead of a button or snap at center front, we used a flat hook and eye. As for as pattern changes, we only modified the front pockets and added a welt pocket on the left behind.

Materials: Anita pattern, paper, tape, ruler, French curve, pencil, tracing wheel.

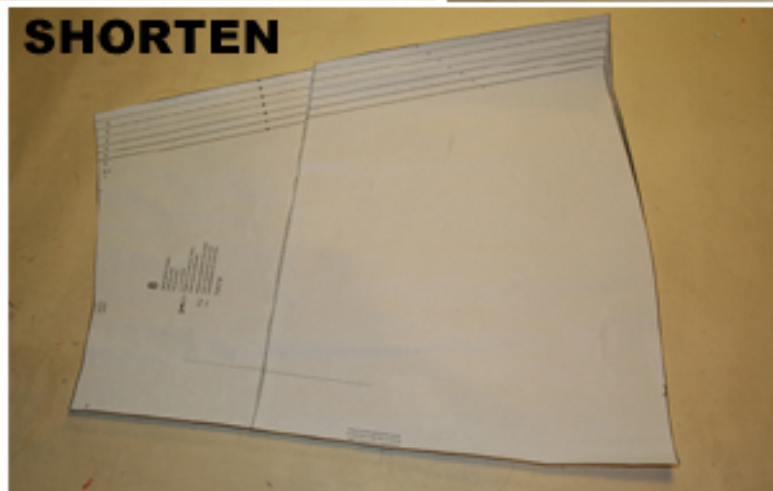
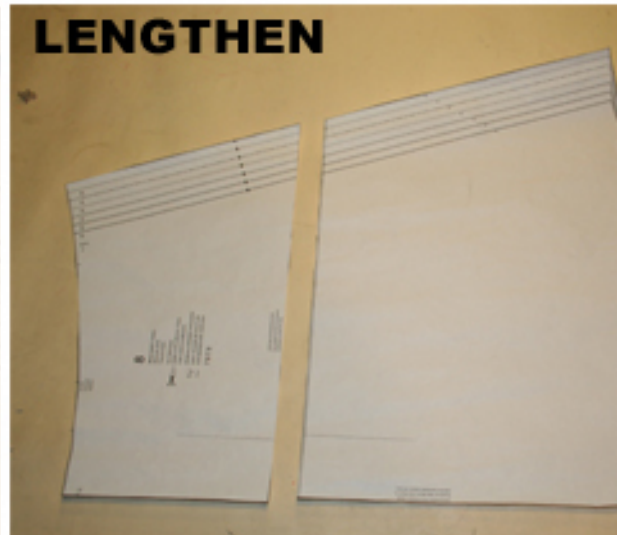
Step 2



The patterns can be printed out at the copy shop. If you decide to print them at home, follow the instructions:
Paper cut for ANSI A (German DIN A4) prints:

The patterns are printed out on 25 sheets with a thin frame. Wait, until all sheets are printed out. Arrange the sheets so that they fit together (see extra page with the overview of the prints). Cut off the single sheets on the upper and right edge along the thin frame lines. Begin with the left lower sheet and then glue the parts in the frame lines together precisely.

Step 3



ADJUST PATTERN SIZES

Select your size according to the Burda-dimension table: Dresses, blouses, jackets and coats according to the bust size, trousers and skirts according to the hip width. Change the patterns about those inches (cm) if necessary, to fit your measurements if they deviate from the Burda-dimension table. Cut out the pattern according to your size.

Refer to our ['Adjust patterns for mixed sizes'](#) technique

Upper waist band edge 1.5" (3.5 cm) below the waist.

For sizes 2 to 12 (EU 34 to EU 44) draw the stitch line for the zipper the same length as to the front center, like size 0 (EU 32).

LENGTHENING OR SHORTENING THE PATTERN PIECES

Our pattern is calculated for a height of 5'6" (168 cm). If you are taller or shorter, you may adjust the pattern to fit your size. Choose your size at the lines marked "lengthen or shorten here". Thus the proper fit is preserved. Make sure that you adjust all pieces of one pattern by the same amount at the same lines.

How to lengthen and shorten pattern pieces:

Cut the pattern pieces along the marked lines.

To lengthen, slide the two halves of the pattern piece as far apart as necessary.

To shorten, overlap the two halves of the pattern piece as far as necessary. Even out the side edges.

Step 12

SEAM
COSTUME
COSTURA

BLIT
FENCE
ASBESTURA



HEM-FOLDLINE

PLIURE DE L'OURLET
DOBLADILLO-LINEA DE DOBLEZ

HEM ALLOWANCE
1 1/2" (4cm) VALEUR D'OURLET
MARGEN DE DOBLADILLO



CUTTING OUT

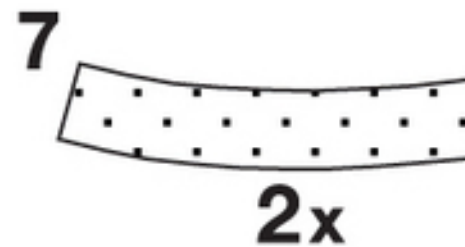
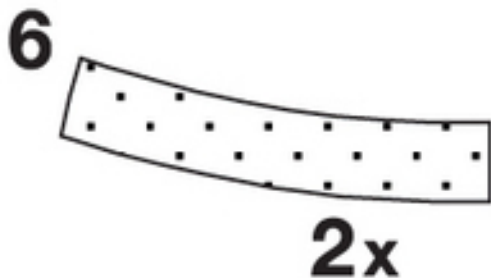
FOLD (â' â' â' â') means: here is the center of a pattern piece but never a cut edge or a seam. The piece should be cut double, with the fold line forming the centre line. Pattern pieces that are outlined with a broken line in the cutting diagrams are to be placed face down on the fabric. The cutting diagrams on the pattern sheet show how the pattern pieces should be placed on the fabric.

The cutting diagrams show the placement of the pattern on the fabric

For a single layer of fabric, the pattern pieces are pinned to the right side. For double layers of fabric, the right sides are facing and the pattern pieces are pinned to the left side. The pattern pieces that are shown in the cutting diagram, extending over the fold of the fabric, should be cut last from a single layer of fabric.

Step 13

INTERFACING



SEAM AND HEMLINE ALLOWANCES are included on an average:

5/8â' (1.5 cm) for all edges and stitches. Use BURDA carbon paper to transfer all pattern lines and marks onto the wrong side of the fabric pieces. You will find instructions in the packet.

Interfacing

Cut interfacing according to the drawing and press onto the wrong fabric side

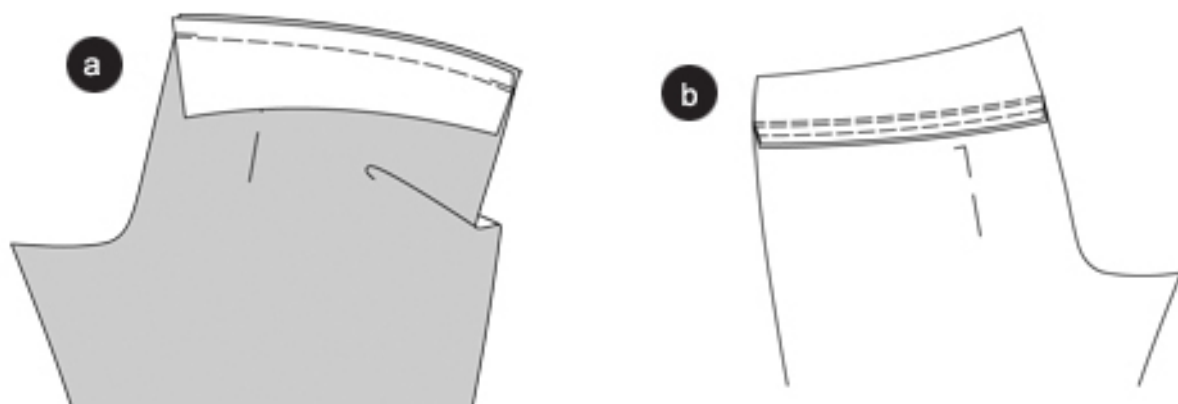
SEWING

When sewing, the right fabric sides should be facing. Transfer all lines on the pattern using a basting stitch onto the right side of the fabric.

Tips for the usage of stretchable fabrics

For stitching please use a special stretch fabric needle for your sewing machine. In order to keep the seams stretchable use a narrow zigzag stitch (stitch width 0.5-1mm, length approximately 2.5 mm) , or a special elastic stitch (see instructions of your sewing machine). Please make sure that the thread tension is not adjusted too tightly.

Step 14



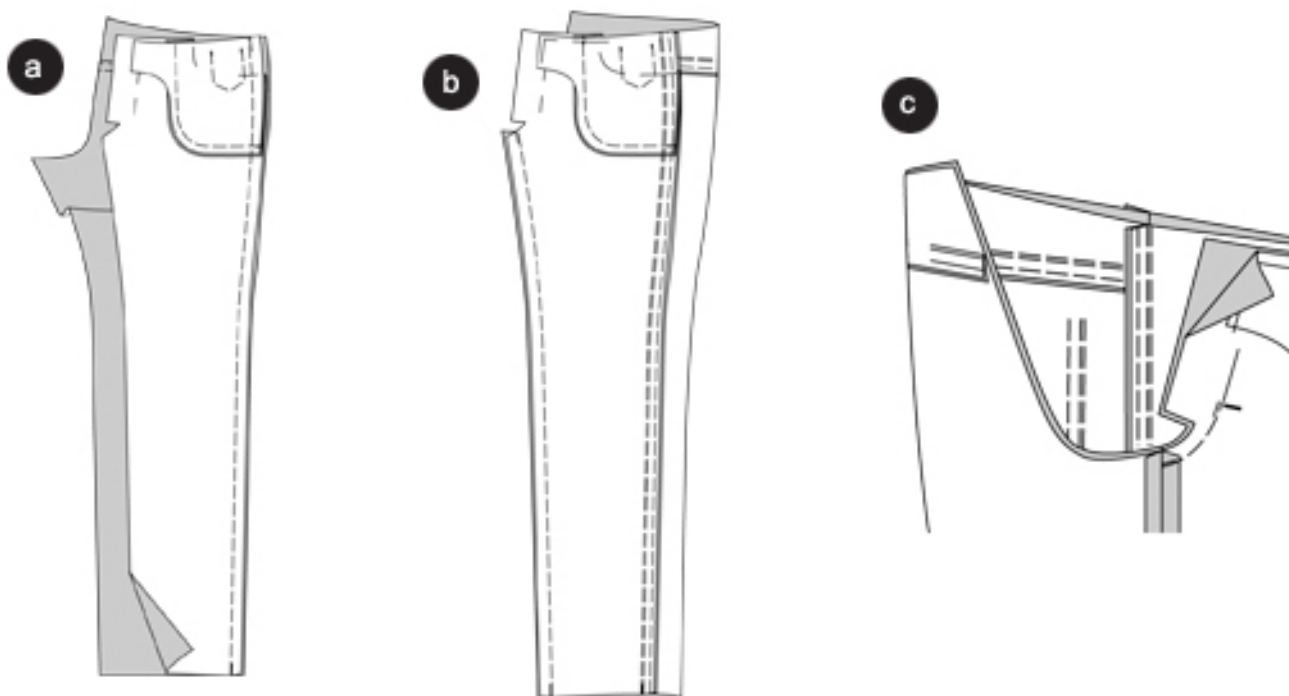
PANT

Back yoke

Baste the back yoke onto the back pant piece, the right sides facing (seam 2), and stitch. (a)

Trim allowances, neaten altogether, fold inwards and press the pant pieces. Stitch the pant pieces along the seam approximately 0.7cm wide, and enclose allowances. (b)

Step 16



Side seams

Position the front pant pieces onto the back pant pieces, the right sides facing. Baste the side seams (seam 3) and stitch. Neaten allowances altogether and press inside the back pant pieces. Stitch the seam narrowly $1\frac{1}{4}$ " (0.7cm) wide, thereby enclosing the allowances. (a)

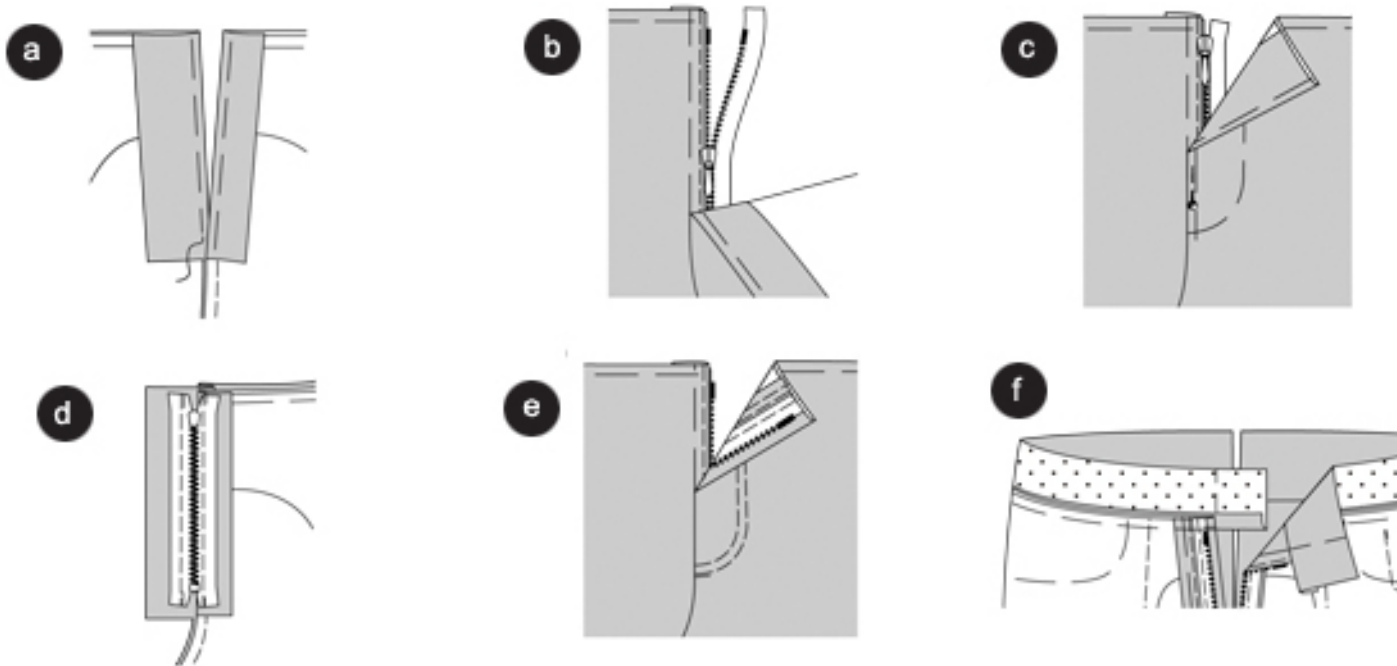
Inner pant leg seams

Fold the pant legs lengthwise, right side inside. Baste the inner pant leg seams (seam 4) and stitch. Neaten allowances and press apart. (b)

Front center seam

Fold one pant leg inside out. Move the pant leg inside the other, the right sides are facing. Stitch the center seam from the slit sign to the inner leg seams. Secure seam ends. Cut back the allowances of the rounding. Neaten allowances, also the ones at the front facing. ©

Step 17



Zipper

Fold inside and baste the facing of the front pant piece along the front center. Allow the facing to under lap approximately 1cm at the right front pant piece, so that the zipper will be covered this way later on. Fold inwards and baste the facing, press. (a)

Baste the under lap onto the zipper strap close to the little teeth, and stitch narrowly. (b)

Close the zipper. Pin the slit, centers are facing. Baste the zipper strap onto the right facing ©; do NOT incorporate the pant piece. Stitch (d).

Stitch the left slit edge as demonstrated, thereby incorporating the facing. (e)

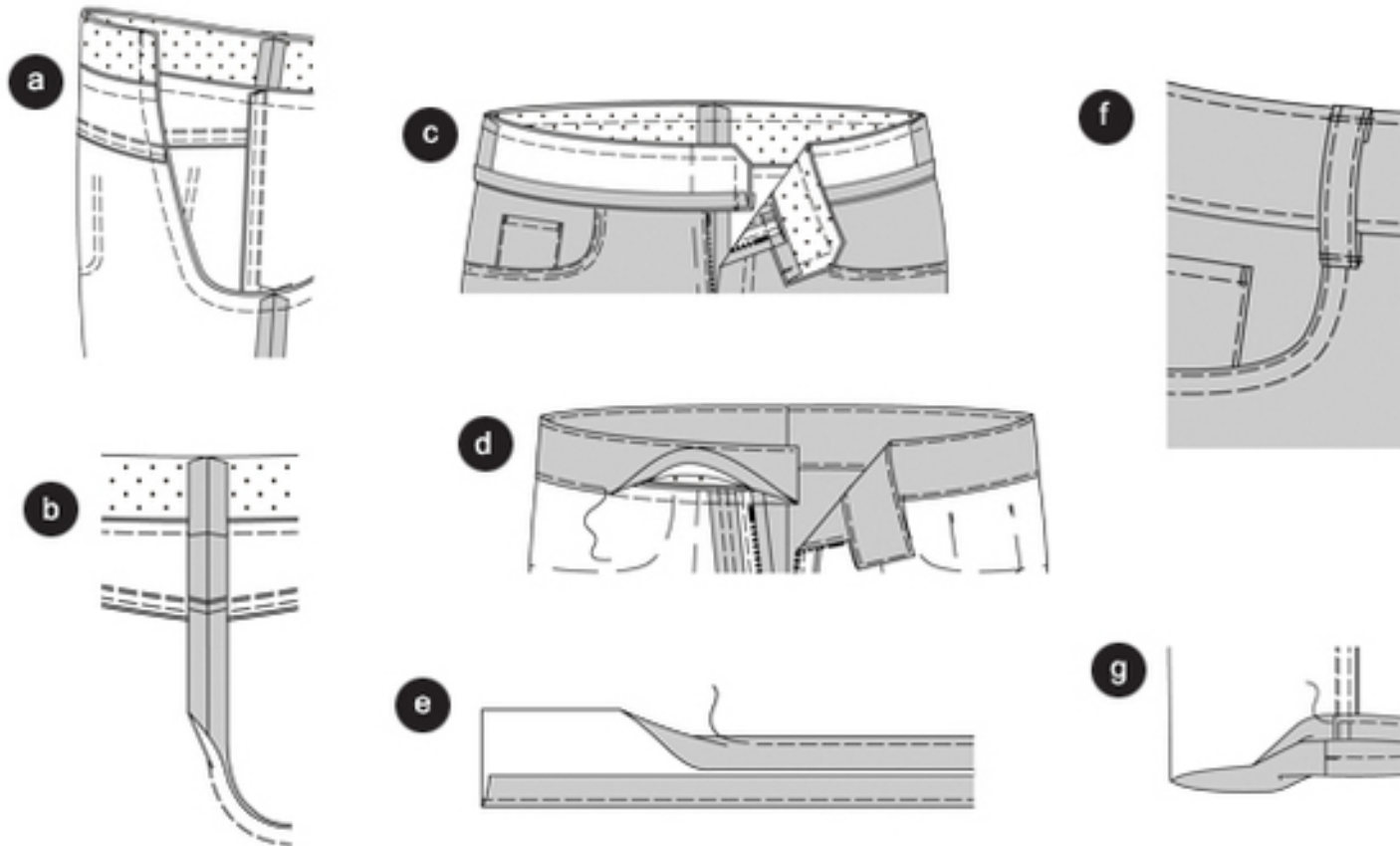
Waistband

Position the front waistband pieces onto the back waistband pieces, the right sides facing. Stitch lateral seams (seam 4). Press the

allowances apart.

Baste the waistband pieces, including the interlining onto the upper waistband edges (seam 5), the right sides facing. The lateral seams meet. Stitch. Cut back the allowances and press inside the waistband. (f)

Step 18



Back center seam

Move pant legs one inside the other, the right sides facing.

Baste the back center seam, also of the waist band. Stitch center seam. Trim allowances and press them apart from the top to the beginning of the rounding (19a). Stitch the back center seam of the still unfinished waistband. Press allowances apart. Press the allowance of the long lower waistband inside. (a)

Pin waist band onto the already stitched waistband, the right sides facing. Seams meet. Stitch the narrow front edges on top of each other. Cut back the allowances cut the corners bias wise. Fold the waistband inside out. Baste edges, press. Baste the middle half of the back waistband onto the upper edge of the pant. (b) Stitch waistband edges narrowly, at the same time stitch the middle half of the waistband ©.

Apply a **BUTTON HOLE** onto the left front waist band. Apply a button onto the underlap. *THIS STEP IS ONLY NEEDED IF YOU CHOOSE TO USE A BUTTON, BUT WE RECOMMEND A HOOK&EYE FOR A CLEANER FINISH!

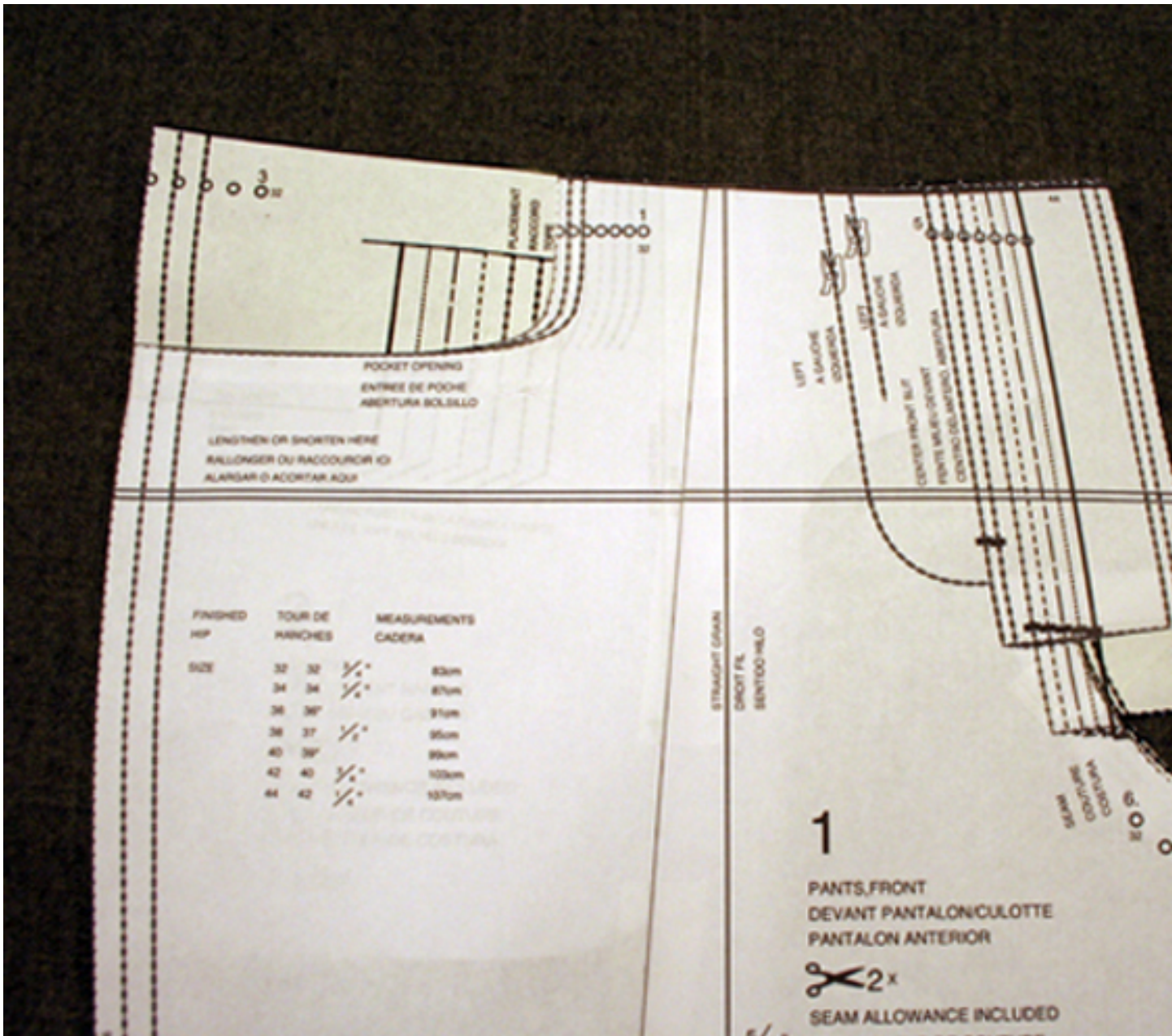
Loops

Neaten straps and press the long edges inwards, $\frac{1}{4}$ " (0.7cm) wide. Stitch edges narrowly. Cut the strap into five equal pieces. Fold the ends inwards to make loops. (d) Stitch the loops onto the back center seam, 1 $\frac{1}{2}$ ' behind the side seams on the back, and in the front at the pocket openings, in each case onto the upper and lower seam of the waistband. (e) *THIS STEP IS ALSO NOT NEEDED UNLESS YOU CHOOSE TO USE BELT LOOPS ON YOUR PANTS!

Hem

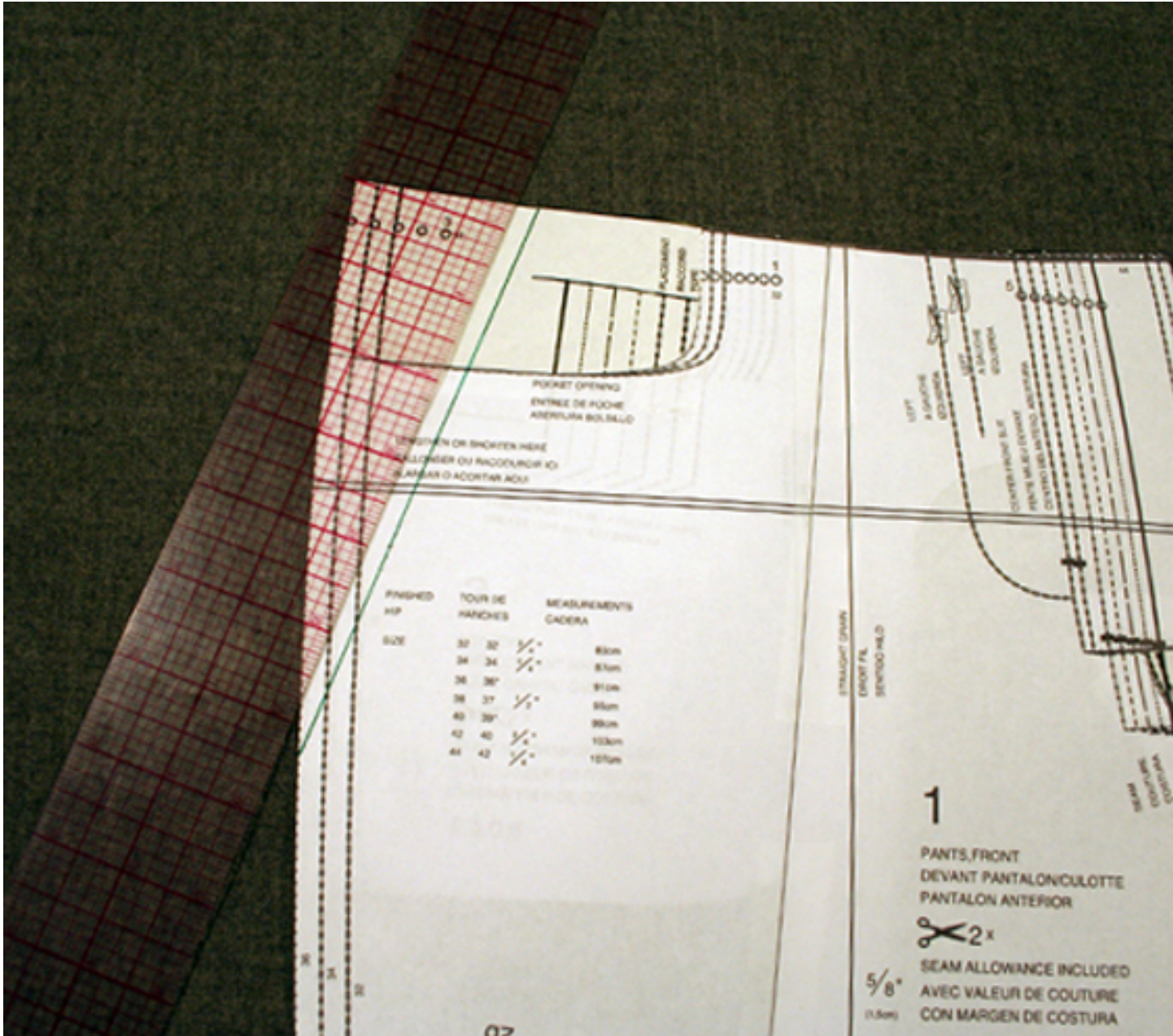
Neaten hem, fold inside and baste, press. Stitch the lower pant edge $\frac{1}{4}$ " (1.2cm) wide, stitch the hem. (f)

Step 4



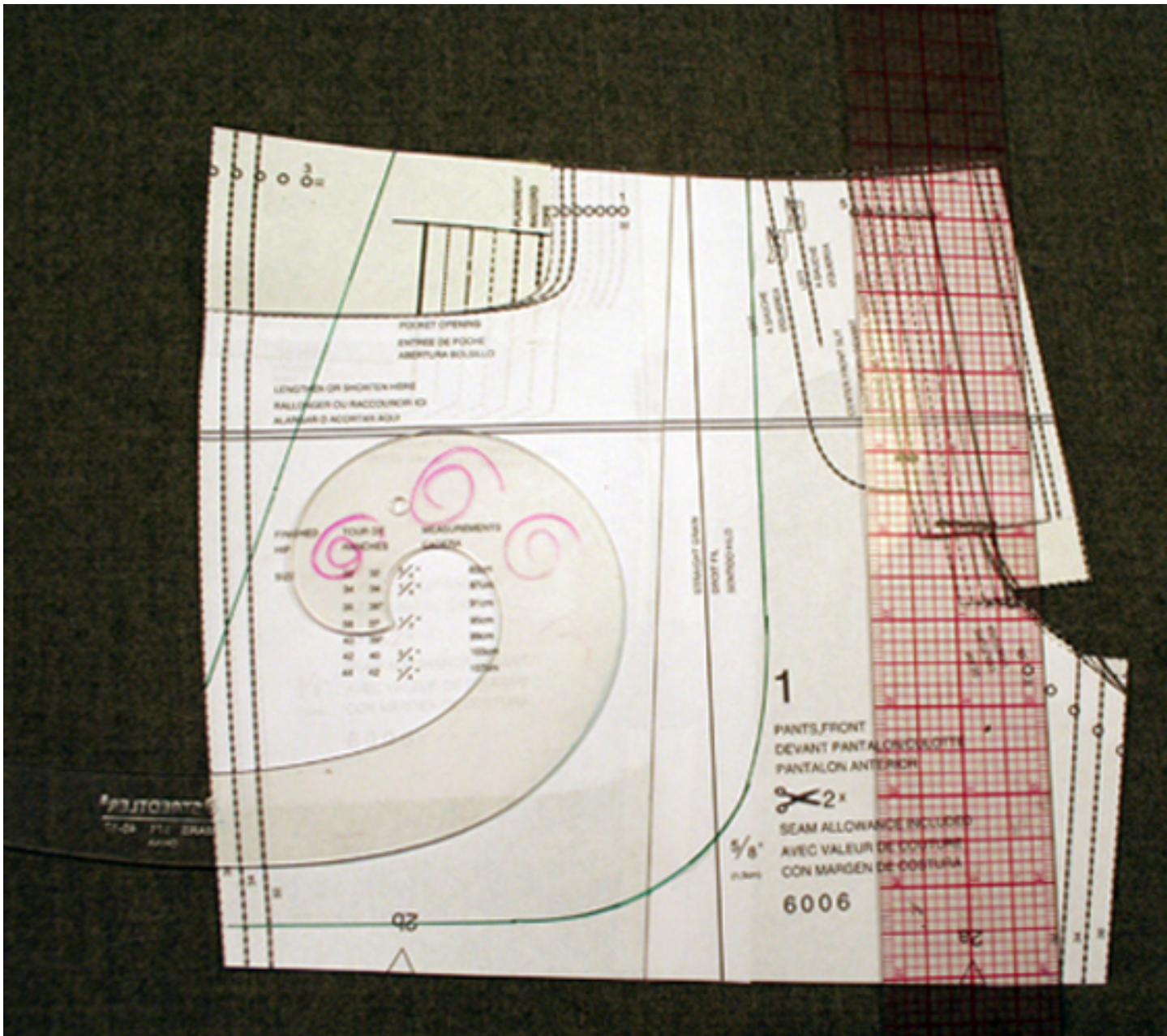
Cut out the front pants pattern and the hip yoke. Place the hip yoke piece under the pocket opening, continuing the side seam and waist seam, closing the original pocket opening.

Step 5



Draw the shape of your new pocket opening. We used a straight line starting about 5 1/2" from the center front, and down 6 1/2" from the hip.

Step 6



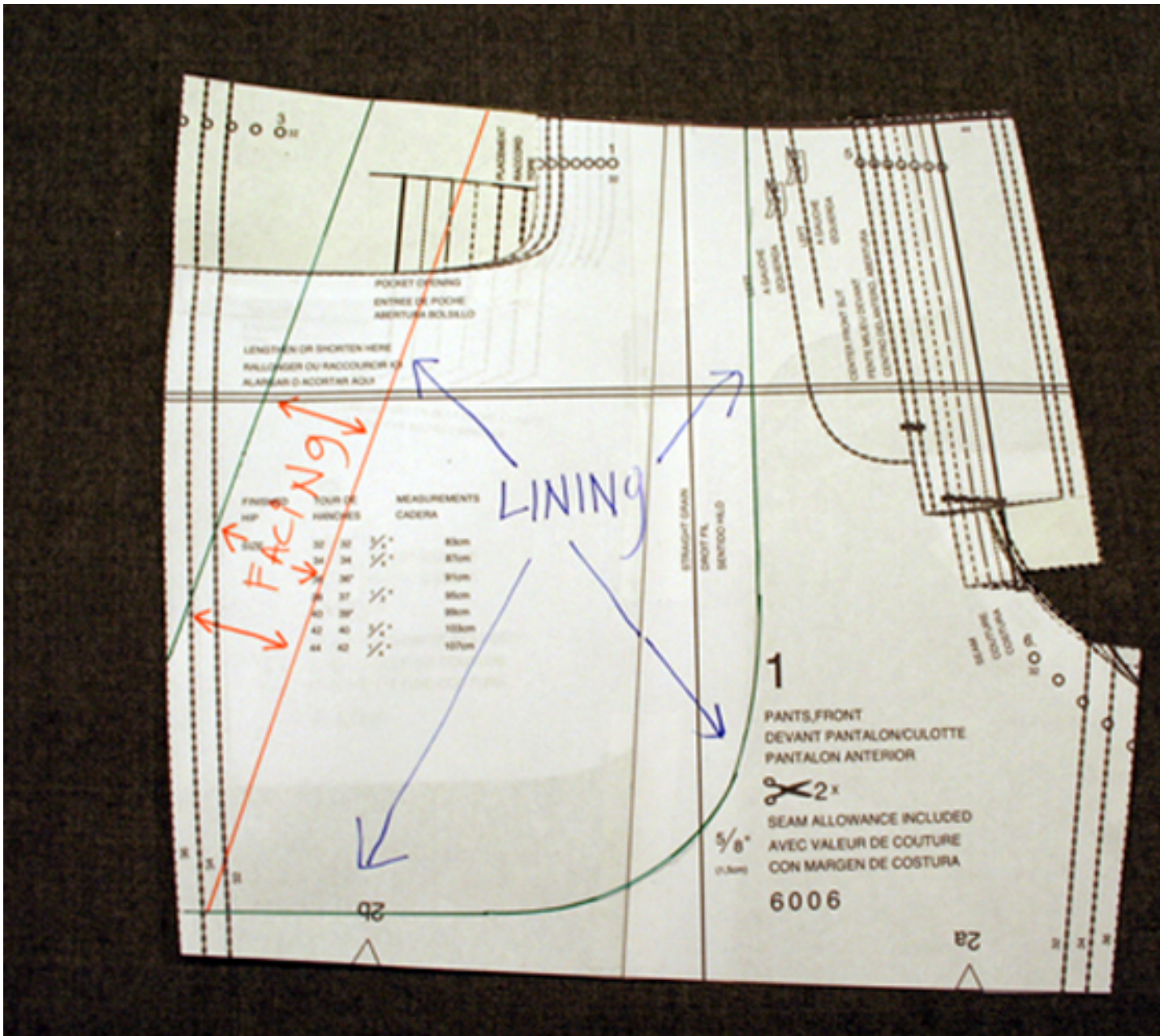
Draw the pocket pouch. Start about 1/2" to the inside of the fly stitch line, and about 2 1/2" below the side seam opening.

Step 7



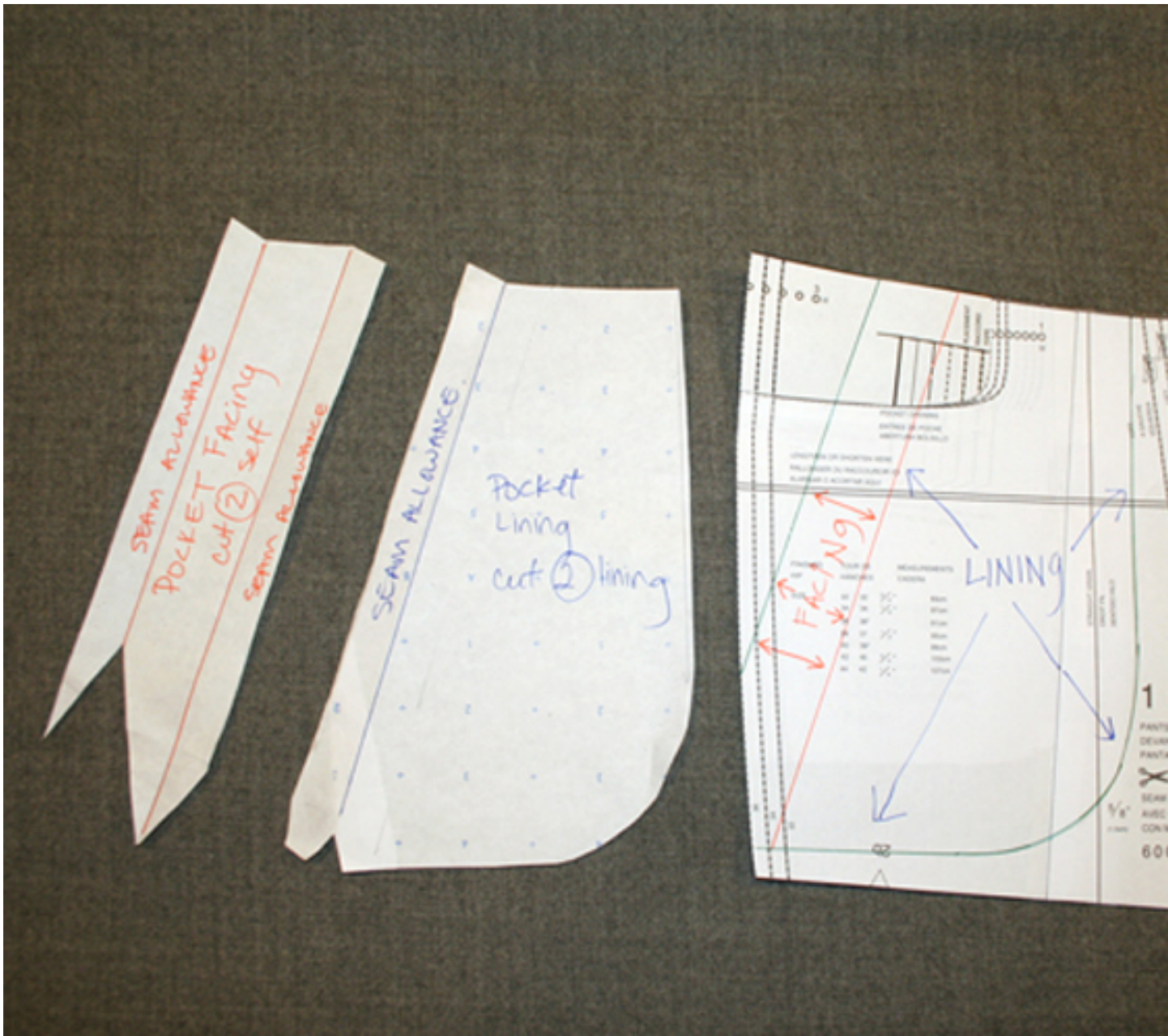
We used a pocket facing in the opening so the lining doesn't flip out as you're wearing your pants. This makes for a nicer, more comfortable garment.

Step 9



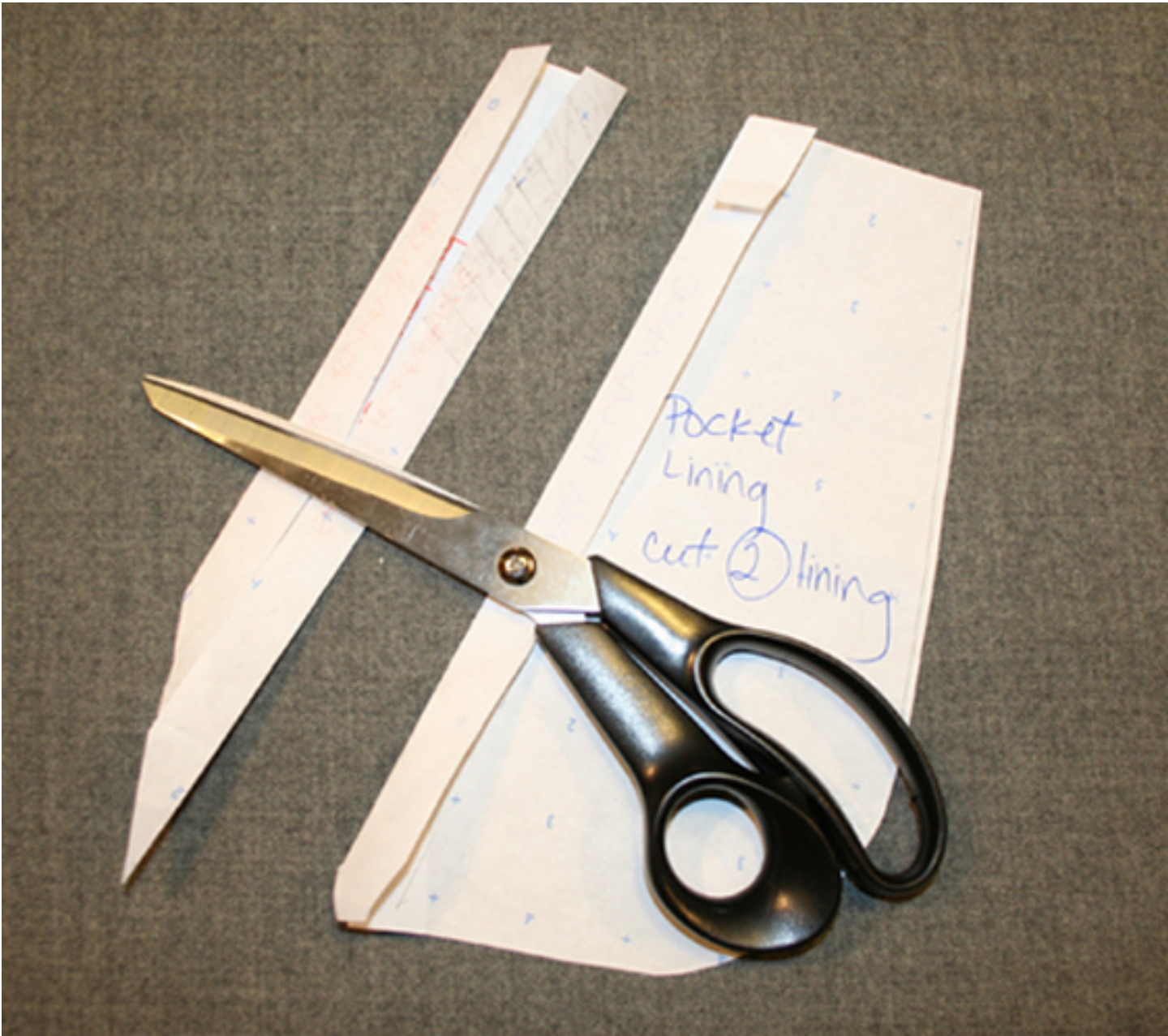
Draw a line 1 3/8" from the pocket opening line, demarcating your facing. The curved part is your pocket lining.

Step 10



Trace out both pattern pieces and add seam allowance where indicated.

Step 11



Note: To get the right shape of the seam allowance, fold the allowance in toward the pattern piece, and cut in the shape of the pattern piece.

Step 15



For the back welt pocket, see the link to the technique below. For the button loop, add a small piece of spaghetti (1 1/4" loop + 1 1/4" seam allowance = 2 1/2" spaghetti) at the center when sewing the top center welt.

Step 19



Onwards and upwards, towards your awesome business slacks...

BurdaStyle

Alessandra Pants