

Cate

By: BurdaStyle

<http://www.burdastyle.com/projects/cate>



This simple yet elegant dressy dress is fitting for any evening event you attend or host. The guests will be charmed not only by your radiant personality, but also by your sparkling dress! Make it especially delectable by choosing a sheer fabric with sequins or lace and lining it in a luxurious silk charmeuse.

Materials

Chiffon with sequins over silk charmeuse

Step 1

burda Download-Pattern
Dress 7983 - instructions

average close fitting

Bust size	34	36	38	40	42	44	46	48	50	52	54
Bust	86	91	96	101	106	111	116	121	126	131	136
Waist	66	71	76	81	86	91	96	101	106	111	116
Length	100	100	100	100	100	100	100	100	100	100	100

with nap

Interfacing: 24" x 24" (60 cm x 60 cm) 15" (40 cm) invisible zipper

Tulle, organza, chiffon

right side wrong side interfacing lining batting

Patternpieces:

PATTERN PIECES:

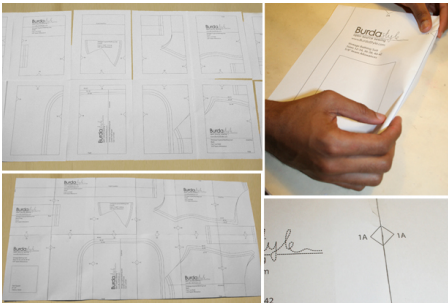
A B 1 Front 1x

A B 2 Back 2x

A B 3 Front Skirt Panel 1x

A B 4 Back Skirt Panel 2x
A B 5 Center Front / Lining 2x
A B 6 Side Front / Lining 4x
A B 7 Back / Lining 4x
A 8 Front Skirt Panel / Lining 1x
A 9 Back Skirt Panel / Lining 2x
A 10 Bow 1x
A 11 Bow Knot Piece 1x
B 12 Tab / Center Front 1x
B 13 Strap 2x
B 14 Strap / Lining 2x

Step 2

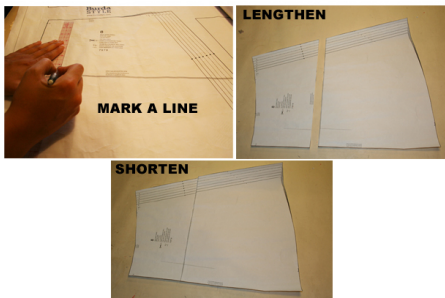


The patterns can be printed out at the copy shop. If you decide to print them at home, follow the instructions:

Paper cut for ANSI A (German DIN A4) prints:

The patterns are printed out with a thin frame. Wait until all sheets are printed out. Arrange the sheets so that they fit together (see additional page with the overview of the prints). Fold the single sheets on the upper and right edge along the thin frame lines. Begin with the left lower sheet and then tape the frame lines together precisely.

Step 3



ADJUST PATTERN SIZES

Select your size according to the Burda-dimension table: dresses, blouses, jackets and coats according to the bust size, trousers and skirts according to the hip width. Change the pattern to fit your measurements if they deviate from the Burda-size chart. Cut out the pattern according to your size.

Refer to our "Adjust patterns for mixed sizes" technique

LENGTHENING OR SHORTENING THE PATTERN PIECES

Our pattern is calculated for a height of 5'6" (168 cm). If you are taller or shorter, you can adjust the pattern pieces along the lines marked "lengthen or shorten here". This way the proper fit is maintained. Always adjust all pattern pieces along the same line to the

same degree.

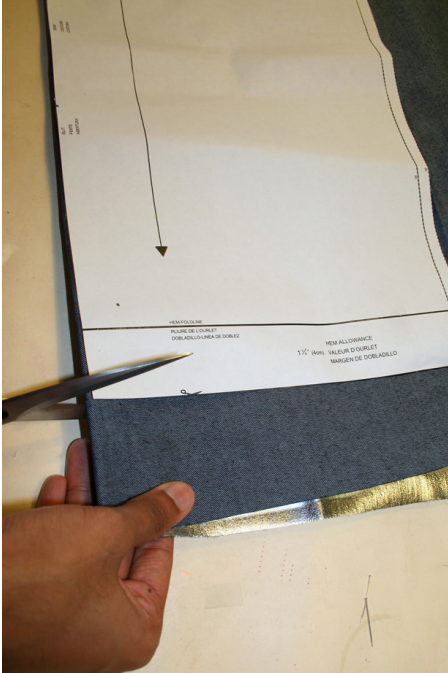
How to lengthen and shorten pattern pieces:

Cut the pattern pieces along the marked lines

To lengthen, slide the two halves of the pattern piece as far apart as necessary.

To shorten, overlap the two halves of the pattern piece as far as necessary. Blend the side edges.

Step 4



CUTTING OUT

FOLD (â€” â€” â€” â€”) means: Cut on the fold, the fold being the center of the pattern piece, but never a cut edge or seam. The piece should be cut double, with the fold line forming the center line. Pattern pieces that are outlined with a broken line in the cutting diagrams are to be placed face down on the fabric. The cutting diagrams on the pattern sheet show how the pattern pieces should be placed on the fabric.

AB

The cutting diagrams show the placement of the pattern on the fabric.

For a single layer of fabric, the pattern pieces are pinned to the right side. For double layers of fabric, the right sides are facing and the pattern pieces are pinned to the wrong side. The pattern pieces that are shown extending over the fold of the fabric in the cutting diagram should be cut last from a single layer of fabric.

AB

Cut out the following pattern pieces in the required size from the pattern sheet:

for the DRESS view A pieces 1 to 11,

for the DRESS view B pieces 1 to 7 and 12 to 14.

Please note:

Cut pieces 1 and 2 on bias grain.

Step 5

SEAM AND HEMLINE ALLOWANCES are included on an average:

5/8" (1.5 cm) for all edges and stitches. Using BURDA copying paper, transfer the lines and signs of the pattern onto the wrong side of the fabric. Instructions can be found in the packaging.

Sewing

While sewing, the right sides of the fabric are facing.

Transfer all lines of the pattern onto the right side of the fabric using basting stitches.

LINING

Use pieces 5 to 9 to cut lining for view A.

Use pieces 3 to 7 and 14 to cut lining for view B.

_ See cutting diagrams on pattern sheet.

INTERFACING

Cut interfacing as illustrated and iron on the wrong side of the fabric pieces.

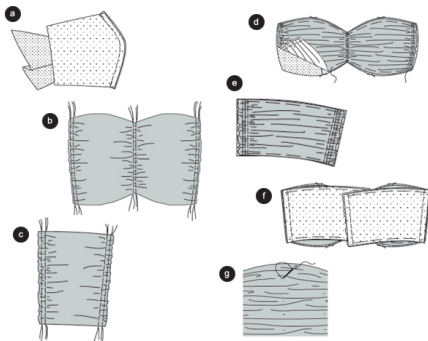
Tips on working with delicate fabrics:

Use a fine needle and thread for transferring pattern lines to the right side of the fabric pieces and for all other basting. Do not use heavy basting thread. Also use a fine sewing machine needle (size 60 or 70) with a sharp tip.

Neaten seam allowances if possible by zigzag stitching approx. 1/4" (0.7 cm) next to seam on both allowances.

Trim excess allowance close to stitching and press allowances to one side.

Step 6



AB

DRESS / Bodice

Important: For optimal results, the gathered pieces need to be taut. Pieces 1 and 2 are therefore cut on bias grain and somewhat smaller than the lining pieces onto which they will be sewn.

Front Panel Seams / Lining

Lay interfaced side front pieces right sides together with interfaced center front. Baste panel seams (seam number 1) and stitch. Trim allowances, clip curves and press open. (a)

Gather Front and Back Pieces

Gather front piece at center front and at side edges. Gather back pieces at side edges and at back edges. To gather, stitch two closely spaced lines of machine basting (longest stitch setting). Pull bobbin threads to gather to match edges of respective lining pieces (edges with same seam number). Knot ends of thread. Distribute gathering evenly. (b + c)

Illustration 2 shows front, 2a shows back.

Lay front piece on front lining piece with wrong side facing right side. Baste all edges together. Stitch center front and side edges together between lines of gathering. (d)

AB

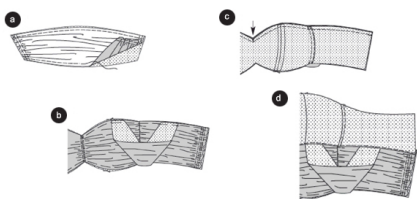
Lay back pieces on interfaced back lining pieces with wrong side facing right side. Baste edges together, matching same seam numbers. Stitch back edges and side edges together between lines of gathering. (e)

Side Seams

Lay back pieces right sides together with front piece. Baste side seams (seam number 2) and stitch. (f)

If possible, pin the bodice snugly on a dress form to prevent the gathered folds from sagging. Pin folds between center front and back and sew in place with small invisible hand stitches. (g)

Step 7



B Straps

Gather straps (piece 13) at the ends as described and illustrated in step 2. Pull bobbin threads to gather straps to width of strap piece 14. Knot ends of thread. Distribute gathering evenly.

Lay gathered straps right sides together with strap lining pieces. Baste lengthwise edges together and stitch. Trim seam allowances, turn straps. Baste and stitch ends of straps together, distributing gathering evenly. (a)

Baste straps on upper edge of bodice between markings in back and from the panel seams in front with right sides facing (seam number 7). (b)

AB Line Bodice

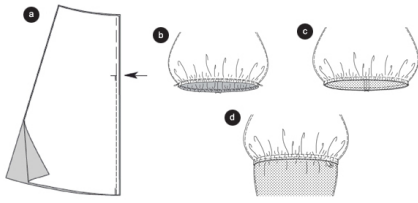
Stitch front panel seams of non-interfaced lining pieces as described and illustrated in step 1. Trim allowances and press open.

Side Seams

Lay non-interfaced back lining pieces right sides together with non-interfaced front lining piece. Stitch side seams (seam number 2). Press allowances onto back and stitch 1½" (1.2 cm) wide to make casings for the boning stays.

Pin lining right sides together with bodice, matching side seams. Baste upper edges together and stitch, catching in straps for view B. Clip in center front close to line of stitching (arrow). Lay lining up, press allowances onto lining. Topstitch close to seam, catching allowances (9a). Lay lining down, baste edges and press. ©

Step 8



SKIRT

Center Back Seam / Slit

Lay back skirt panels right sides together. Baste center seam. Stitch seam from slit mark (arrow) to lower edges. Leave slit basted. Neaten allowances and press open. Undo basting at slit. (a)

Side Seams

Lay front skirt panel right sides together with back skirt panel. Baste side seams (seam number 4) and stitch. Trim allowances, neaten together and press onto back.

Skirt Lining

Stitch center back seam and side seams (seam number A 5, B 4) in the same manner as on skirt of top fabric.

A

Gather lower edge of skirt, e.g. stitch two closely spaced lines of machine basting. Pull bobbin threads to gather to fit lower edge of skirt lining. Knot ends of threads. Distribute gathering evenly. (b)

Pin lower edge of skirt right sides together with lower edge of lining, matching side seams. Stitch. ©

Neaten allowances together and press onto skirt lining. Topstitch lower edge of skirt lining 3/8" (1 cm) wide for elastic casing, catching seam allowances and leaving a small opening to insert elastic. Use a safety pin as a bodkin to insert elastic. (d)

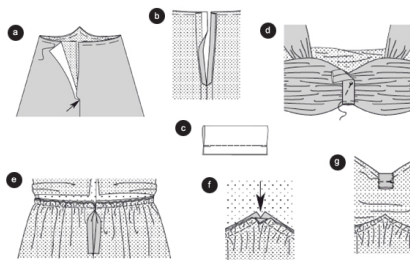
Finished width:

371" – 391" – 411" – 431" – 451" – 471" – 491"

(95 – 100 – 105 – 110 – 115 – 120 – 125 cm).

Sew ends of elastic together.

Step 9



AB

A: Gather upper edge of skirt to fit edge of skirt lining.

Place skirt lining inside skirt with wrong sides facing, baste upper edges together. Clip skirt of top fabric at end of slit close to last stitch (arrow) (a). Turn allowances at edges of slit in lining to inside. Baste allowances together (b).

Illustrations show view B.

B: Gather upper edge of skirt with lining to fit edge of bodice as described and illustrated in step 11. Knot ends of threads. Distribute gathering evenly.

B Tab (Center Front)

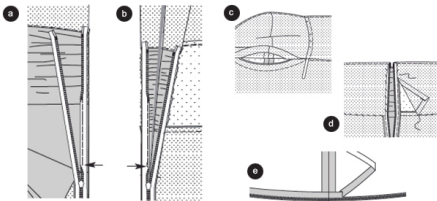
Fold tab piece lengthwise, right side facing in. Stitch long edges together 5â€³8" (1.5 cm) wide. Trim allowances. Turn tab and fold so that the seam lies along the center. Baste open end of tab on lower edge of front with wrong side facing right side (d). Do not catch lining.

AB Stitch Bodice

Baste bodice right sides together with skirt (seam number 6), matching side seams. Stitch, do not catch lining of bodice (e). Clip bodice in center front close to line of stitching (f). Trim allowances and press onto bodice.

B: Turn tab over upper edge of dress to inside, turn in and sew to lining. (g)

Step 10



(Invisible) Zipper

Lay lining of bodice up. Open zipper and pin face down on the seam allowance of one edge of opening.

Begin at top of seam. The zipper teeth must lie exactly on the marked edge of the opening. Use a special foot for invisible zippers to stitch very close to the teeth of the zipper (a). Stitch zipper onto other edge of opening likewise (b). Stitch both edges from the top to beginning of center back seam (arrow). The teeth of an invisible zipper roll inward and but the special presser foot will hold them flat for stitching. For best results, use a zipper a bit longer than the opening.

A: Cut RIGILENE boning tape into two pieces each 41â€³2" (11 cm) long.

Insert boning into casings at side seams of lining. Turn in edge of lining on bodice and sew to zipper bands by hand (d) and along skirt joining seam, clipping lining in center front.

B Hem / Lining Hem

Press allowance to inside, topstitch fold edge with close zigzag stitching. Trim surplus allowance close to stitching. (e)

TIP: Test stitch on a scrap of fabric first to check stitch setting and thread tension. Use machine embroidery thread.