

Bella

By: BurdaStyle

<http://www.burdastyle.com/projects/bella>



Just in time to brighten up your spring wardrobe, these fresh high-waisted Bella pants are a good fit for many sizes. Due to the wider shape of the pant leg, they are easy on the curves, incredibly comfortable to wear, and the high waist makes your legs look like they go on forever! If you don't like the pleats on either side, just sew them closed or remove them from of the pattern. These pants are both an easy-to-wear classic and right on-trend with the waistline moving up. Enjoy!

Materials

denim, buttons, interfacing

Step 1

**burda Download-Pattern
Pants 6011 - Instructions**

●●● average semi-fitted

burda sizes	55 ins / 140 cm							
	34	36	38	40	42	44	46	
yds	2 1/4	2 1/4	2 1/4	2 1/4	2 1/4	2 1/4	2 1/4	2 1/4
m	2,00	2,00	2,00	2,00	2,00	2,20	2,20	2,20

→ with nap

Einlage 90 cm x 45 cm 5x

Leichte Jeansstoffe, Gabardine

- 1 Front pant piece 2x
- 2 Pocket pouch 2x
- 3 Hip yoke 2x
- 4 Back pant piece 2x
- 5 Front center yoke 4x
- 6 Front side yoke 4x
- 7 Back center yoke 4x
- 8 Back side yoke 4x
- 9 Under lap (left) 1x
- 10 Pocket 2x

Fabrics: Light jeans fabric, gabardine

Step 2

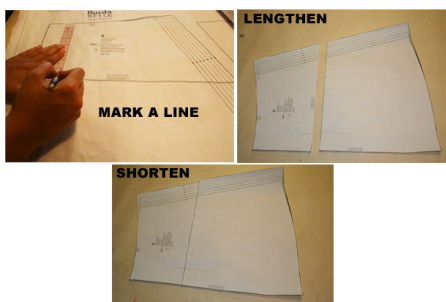


The patterns can be printed out at the copy shop. If you decide to print them at home, follow the instructions:

Paper cut for ANSI A (German DIN A4) prints:

The patterns are printed out on 30 sheets with a thin frame. Wait, until all sheets are printed out. Arrange the sheets so that they fit together (see extra page with the overview of the prints). Fold the single sheets on the upper and right edge along the thin frame lines. Begin with the left lower sheet and then tape the frame lines together precisely.

Step 3



ADJUST PATTERN SIZES

Select your size according to the Burda-dimension table: Dresses, blouses, jackets and coats according to the bust size, trousers and skirts according to the hip width. If necessary, change the pattern, to fit your measurements if they deviate from the Burda-dimension table.

Cut out the pattern according to your size (a).

Refer to our 'Adjust patterns for mixed sizes' technique

Size 4 to 14 (EU 36 to EU 46)

The button holes and stitch lines of piece 1 are marked according to size 2 (EU 34). For the bigger sizes mark the buttonhole and stitch lines the same length to the front center as size 2 (EU 34).

LENGTHENING OR SHORTENING THE PATTERN PIECES ACCORDING TO YOUR SIZE

Our pattern is calculated for a height of 5â€™ 6â€™ (168 cm). If you are taller or shorter, you can adjust the pattern pieces along the lines marked "lengthen or shorten here". Thus the proper fit is preserved. Always adjust all pattern pieces along the same line the same degree (b).

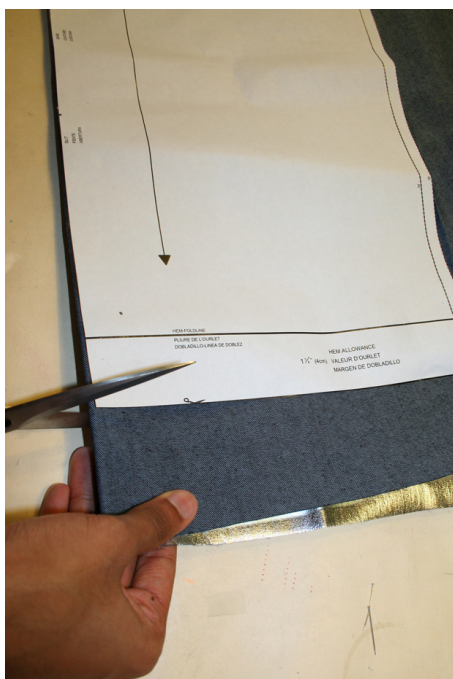
How to lengthen and shorten pattern pieces:

Cut the pattern pieces along the marked lines.

To lengthen, slide the two halves of the pattern piece as far apart as necessary.

To shorten, overlap the two halves of the pattern piece as far as necessary. Blend the side edges ©.

Step 4



CUTTING OUT

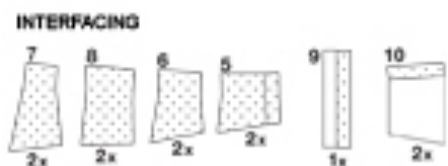
FOLD (â€™ â€™ â€™ â€™) means: here is the center of a pattern piece but never a cut edge or a seam. The piece should be cut double, with the fold line forming the centre line. Pattern pieces that are outlined with a broken line in the cutting diagrams are to be placed face down on the fabric. The

cutting diagrams on the pattern sheet show how the pattern pieces should be placed on the fabric (a).

The cutting diagrams show the placement of the pattern on the fabric

For a single layer of fabric, the pattern pieces are pinned to the right side. For double layers of fabric, the right sides are facing and the pattern pieces are pinned to the wrong side. The pattern pieces that are shown in the cutting diagram, extending over the fold of the fabric, should be cut last from a single layer of fabric (b).

Step 5



SEAM AND HEMLINE ALLOWANCES are included on an average:

5/8" (1.5 cm) for all edges and stitches. Using Burda copying paper, transfer the lines and signs of the pattern onto the wrong fabric side. You will find instructions in the packaging.

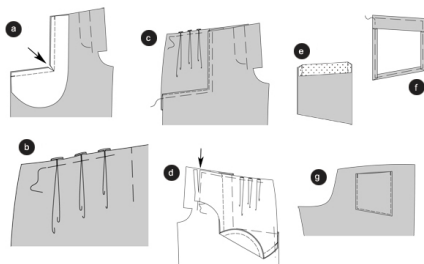
Interfacing

Cut out the interfacing according to the drawing and press it onto the wrong fabric side.

Sewing

While sewing the right fabric sides are facing. Transfer all lines of the pattern onto the right fabric side using basting stitches.

Step 6



Pants

Hip yoke pockets

Position the pocket pouch onto the front pant piece, right sides facing; baste the pocket opening edges on top of each other (seam 1), and stitch. Trim allowances. Cut diagonally into the corners until you reach the stitch line / seam (arrow). Fold the pocket pouch right side out, baste the edge, press and topstitch narrowly (a).

Along the hip yoke piece, fold the inverted pleats from the outside in the direction shown by the arrow, and pin (b).

Pin the front pant piece onto the hip yoke piece, so that the pocket opening meets the marked line on top and at the side.

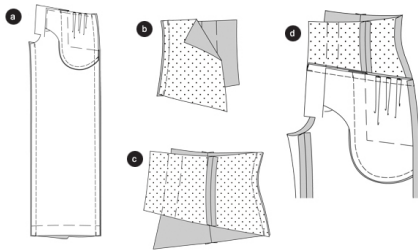
The right fabric sides of pocket pouch and hip yoke are positioned on top of each other. Baste the pocket opening ©.

Position and baste the pocket pouch onto the hip yoke piece, not including the front pant piece. Neaten the allowances. Baste the side, top and front edges of the hip yoke piece onto the front pant piece. Note that the allowances of the right hip yoke piece have to be cut along the front center edge (arrow). Neaten the pocket edges of the back pant pieces (d).

Fold the facing of the top pocket edge along the fold line to the outside, stitch the sides (e). Trim the allowances at the corners. Fold the facing and the remaining allowances to the inside, press (f).

Pin the pockets onto the back pant pieces so that they meet the marked lines. Topstitch the pockets narrowly (g).

Step 7



Side seams / Inner leg seams

Position the front pant pieces onto the back pant pieces, right sides facing; baste the side seams (seam 2) and the inner leg seams. Stitch the seams. Neaten the allowances and press them apart (a).

Yokes:

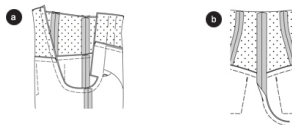
For the outer yoke, stitch the interfaced yokes in the following way:

Position the front side yoke onto the front center yoke, right sides facing. Baste the princess seams (seam 4); and stitch. Press allowances apart. Stitch the princess seams of the back yoke in the same way (seam 5) (b).

Position the front yokes onto the back yokes, right sides facing. Stitch the side seams (seam 6). Press the allowances apart ©.

Pin the yokes onto the top edge of the pant pieces, right sides facing (seam 7). The side seams meet. Stitch. Trim the allowances, then fold and press them inside the yokes. For the inner yoke, stitch the non-interfaced yoke pieces together. Stitch the back center seam. Press the allowances apart (d).

Step 8



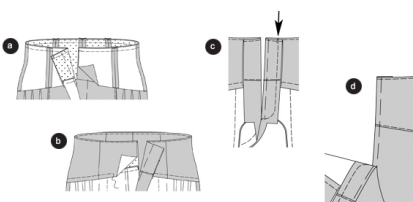
Front and back center seams

Fold one pant leg inside out. Put this folded leg inside the other one, right fabric sides facing.

Pin the front center seam from the slit sign to the inner leg seams, continuing to the back center seam, and up along the yoke. The yoke seams meet. Stitch the seam, then secure the seam ends. Trim the allowances, including the ones of the front facing (a).

Press the allowances of the back center seam apart, starting from the top to the beginning of the curve (b).

Step 9



Top yoke

Pin the non-interfaced onto the already stitched yoke; right sides facing and the seams meet. Stitch the top yoke edges to each other. Trim allowances (a).

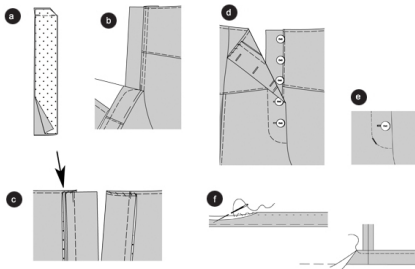
Fold the non-interfaced yoke right side out. Baste the top edges, press and topstitch narrowly. Neaten the lower edge of the inner yoke, position it on top of the yoke seam, and pin. Topstitch the yoke seam narrowly, thereby enclosing the inner yoke. Neaten the front yoke edges (b).

Closure

At the right front pant piece, fold the FACING along the front center to the inside; baste and press. Stitch the right slit edge according to the drawing (arrow) ©.

At the left front pant piece, allow the facing to underlap approximately $\hat{A}1/4\hat{a}'$ (0.7 cm). Fold and baste the facing, press (d).

Step 10



Underlap

Fold the underlap in half, right sides facing. Stitch the top edges together. Trim allowances, and cut the corners diagonally. Fold the underlap right side out, press. Neaten the edges (a).

Position the trimmed edge of the underlap under the left front edge. The closed, narrow side needs to fit under the edge of the yoke. The underlap sticks out $1 \hat{A}1/4\hat{a}'$ (3 cm). Stitch the left slit edge narrowly, catching the underlap (b).

Trim the facing of the left slit edge, and neaten. Stitch the facings of both slit edges onto the yoke edges ©.

Apply the button holes onto the right closure edge according to the drawing. Position the 2 parts of the slit on top of each other, close the slit by pinning it. Mark the spots where the buttons should be applied. Apply the buttons onto the underlap (d).

To affix the underlap, stitch a little bar onto the right slit edge at the curve. Use a narrow, tight zig zag stitch, catching the underlap on the inside. TIP: For those who do not desire the little bar, the underlap may be stitched onto the facing in place of the bar (e).

Hemline

Neaten the hemline, fold inside and press. Sew the hemline by hand, or stitch it approximately $1 \hat{A}1/4\hat{a}'$ (3 cm) wide (f).