

Minna Variation

By: BurdaStyle

<http://www.burdastyle.com/projects/minna-variation--2>

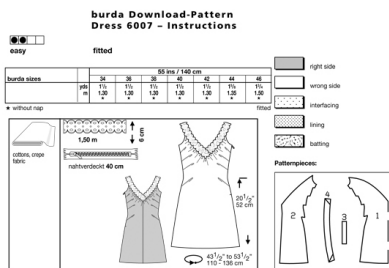


This incredibly fun and easily done party dress is all about the inset that you choose for it. We went with gold for a bit of glam, but you can also tone it down with less sparkly options like a cotton trim. This is our little New Year party dress, in case you are still looking for what to wear. You can easily make it in a day or weekend, it is very easy to adjust the fit in the back or sideseams, and you will look super glamorous in it for sure!! This is only a slight modification of the other Minna dress we posted on the site, see in our instructions how to re-shape the neck according to your choice of trim. Have fun with it!

Materials

knit, charmeuse, zipper, trim

Step 1

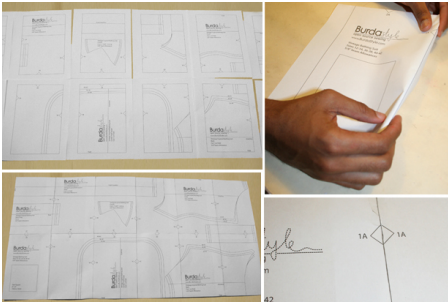


PATTERN

- 1 Front piece 1x
- 2 back piece 2x
- 3 Bias strap for the armhole 2x
- 4 Placket for the body 2x

Fabrics: Cotton crepe fabric

Step 2

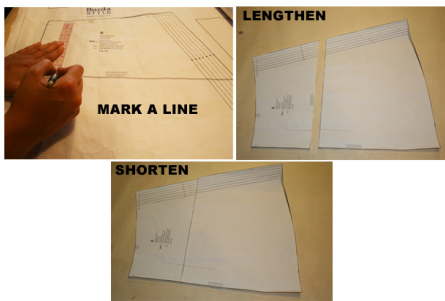


The patterns can be printed out at the copy shop. If you decide to print them at home, follow the instructions:

Paper cut for ANSI A (German DIN A4) prints:

The patterns are printed out on 24 sheets with a thin frame. Wait, until all sheets are printed out. Arrange the sheets so that they fit together (see extra page with the overview of the prints). Cut off the single sheets on the upper and right edge along the thin frame lines. Begin with the left lower sheet and then glue the parts in the frame lines together precisely.

Step 3



ADJUST PATTERN SIZES

Select your size according to the Burda-dimension table: Dresses, blouses, jackets and coats according to the bust size, trousers and skirts according to the hip width. Change the pattern if necessary, to fit your measurements if they deviate from the Burda-dimension table. Cut out the pattern pieces according to your size.

Refer to our "Adjust patterns for mixed sizes" technique

LENGTHENING OR SHORTENING THE PATTERN PIECES

Our pattern is calculated for a height of 5'6" (168 cm). If you are taller or shorter, you may adjust the pattern to fit your size.

Choose your size at the lines marked "lengthen or shorten here". Thus the proper fit is preserved.

Make sure that you adjust all pieces of one pattern by the same amount at the same lines.

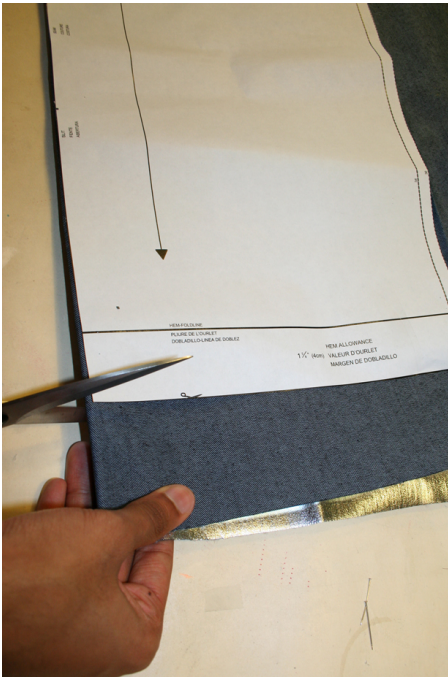
How to lengthen and shorten pattern pieces:

Cut the pattern pieces along the marked lines.

To lengthen, slide the two halves of the pattern piece as far apart as necessary.

To shorten, overlap the two halves of the pattern piece as far as necessary. Even out the side edges.

Step 5



CUTTING OUT

FOLD (â" â" â" â") means: here is the center of a pattern piece but never a cut edge or a seam. The piece should be cut double, with the fold line forming the center line.

Pattern pieces that are outlined with a broken line in the cutting diagrams are to be placed face down on the fabric.

The cutting diagrams on the pattern sheet show how the pattern pieces should be placed on the fabric.

The cutting diagrams show the placement of the pattern on the fabric

For a single layer of fabric, the pattern pieces are pinned to the right side. For double layers of fabric, the right sides are facing and the pattern pieces are pinned to the left side. The pattern pieces that are shown in the cutting diagram, extending over the fold of the fabric, should be cut last from a single layer of fabric.

Step 6

SEAM AND HEMLINE ALLOWANCES are included on an average:

1 1/2 â" (4 cm) for the hemline and 5/8â" (1.5 cm) for all edges and stitches.

Lace edging

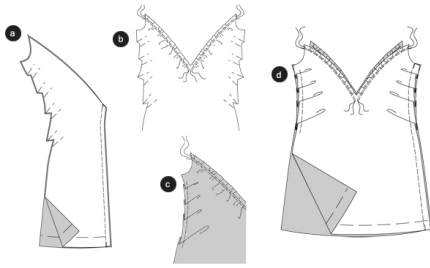
Cut the placket (part 4) twice out of the lace edging. Press and smooth out the lace edging according to the pattern piece. Transfer the lines and signs onto the left fabric side using Burda copying paper. Instructions you will find in the packaging.

Sewing

While sewing the right fabric sides are facing.

Transfer all lines of the pattern onto the right fabric side using basting stitches.

Step 7



DRESS Back center seam

Position the back pieces on top of each other, the right sides facing, baste the center seam and stitch. Neaten allowances and press them apart. (a)

Double stitching the neckline

Neaten the front and back neckline. Double stitch along the front and back neckline, each time from the top to the center, using large stitches. Tighten the under threads but don't knot yet. (b)

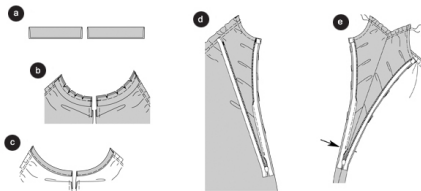
Lateral pleats

Fold the pleats of the front and back piece in the direction of the arrows, pin and stitch along the allowances. ©

Right lateral seam

Position the front piece onto the back piece the right sides are facing, stitch the right lateral seam (seam 1). Neaten allowances and press apart. (d)

Step 8



Bias strap for the armpit

Fold the bias straps lengthwise, left side inside. Press.

Cut one bias strap for the left front armhole and the back armhole into two pieces. Trim the allowances of the armholes to $\frac{1}{2}$ " (1 cm) (a).

Baste the bias straps onto the armhole, the right sides facing, the open edges are laying on the allowance. Stitch the bias straps $\frac{1}{2}$ " (1 cm) from the edge. Trim the allowances, cut in (b).

Fold and baste the bias straps, press. Stitch the edge of the armholes $\frac{1}{4}$ " (0.7 cm), thereby stitching the bias strap ©.

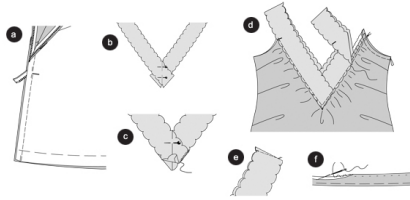
Left lateral seam / zipper (seam covered)

Use an invisible zipper. That zipper is stitched (on) invisibly from the right. The zipper should be $1\frac{1}{2}$ " (2 cm) longer than the slit. It will be applied before the seam under the slit is stitched. To apply the zipper you need a special foot. Neaten the allowances.

Open the zipper and pin it onto the allowance of a slit edge, the right side of the zipper is facing the allowance. The little teeth have to lay exactly on the marked slit edges. Stitch the zipper, using a special zipper foot, close along the zipper teeth (d). Stitch the other strap of the zipper in the same way onto the other slit edge (e).

At the top fold the strap end inside. At both slit edges stitch from the top to the slit sign (arrow). Since the zipper teeth have the tendency to roll in, the special zipper foot keeps them flat. Close the zipper.

Step 9



Left lateral seam

Position the front piece onto the back piece the right sides facing. Stitch the lateral seam from the bottom to the slit sign. Pull the zipper slightly. Secure the seam ends. Press the allowances apart (a).

Placket of the lace edging

Pin the right placket onto the left placket at the front edge, the centers meet. Pin the plackets at the back center in the same way (b). Trim the overlapping edges, fold inside narrowly and stitch onto the lace edging (c).

Along the neckline edges the underthreads of the double stitched seam has to be tightened slightly to the length of the outer lace edging. Start at the center and tighten to the cross lines. Knot threads. Distribute the width equally.

Pin the lace edging onto the neckline, thereby beginning and ending at the front and respectively back center. Cross line 2 meets the front armhole edges, cross line 3 meets the back armhole edges. Stitch the lace edging narrowly (d). Try the dress on. If necessary, adjust the lace edging along the shoulder, and stitch a little dart (e).

Hemline

Neaten hemline, fold inwards and baste, press. Sew the hemline easily by hand (f).

Step 4



Because of the trim we used for this project, we wanted to narrow the neckline slightly from the original pattern. This adjustment is really for a case-by-case basis, depending on the trim you choose to use on your dress. Play with it and see what looks best.
