

# Sidonie Variation 1

By: BurdaStyle

<http://www.burdastyle.com/projects/sidonie-variation-1>

---



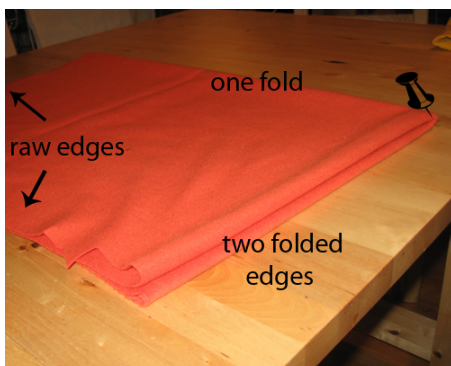
Our first variation on the Sidonie basic skirt pattern. A longer variation with a playful paper bag waist detail and ruffle on the hem shows off beautiful curves.

## Materials

Corduroy, Zipper, Button, Interfacing

---

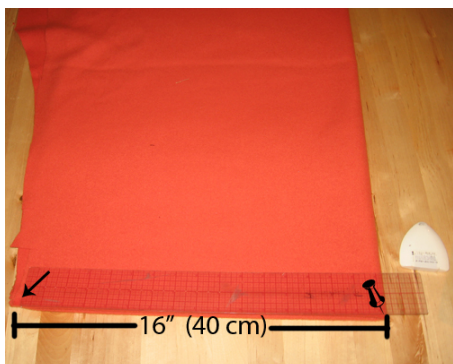
## Step 10



To make the flounces for this skirt, you will need about an extra yard of fabric. This is because the flounce is partially on the bias, and in order to drape properly, it will need to be cut with extra yardage. Fold the fabric into quarters as illustrated above. Note the corner marked with a pin- where all the folded edges meet.

---

## Step 11



Measure from the pin point 16â— (40 cm) and mark, with tailors chalk or pins. This point is illustrated above with an arrow.

---

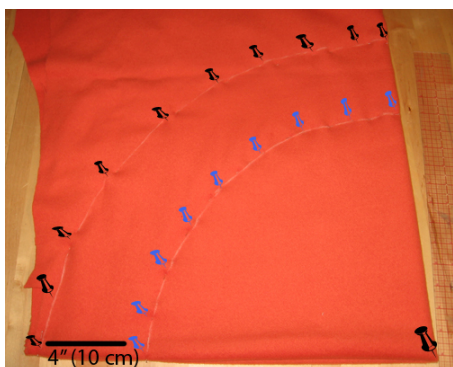
## Step 12



Continue measuring 16â— (40 cm) from this point, in a manner to create an arc shape.

---

## Step 13



You should create a line that looks like the one illustrated above with black pins. This will be the hem of your flounce. Measure 4â— (10 cm) in from this line and mark off, as illustrated with the blue pins. This will be the edge of the flounce to attach to your skirt.

---

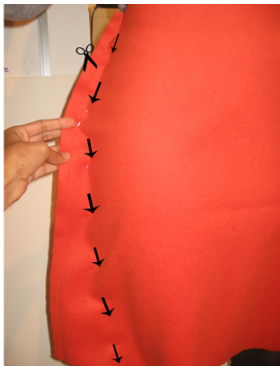
## Step 14



Cut out the flounce.

---

## Step 15



Before attaching the flounce, to achieve this look you will need to taper your skirt. Try on the skirt with the inside out, or put it on a form, and pin the sides so the skirt comes in from the hips. Sew the new side seams and trim excess.

---

## Step 16



Since the skirt is tapered, you will need to create a slit in the back to allow movement. Along the center back seam, create a small slit by folding the seam allowance to the side and topstitching, about 5â— up from the hem.

---

## Step 17



Now you can attach the flounce to the new tapered hem. You will now have a big â—donutâ— of fabric. Cut it so that it is one long piece. Then, start spreading the flounce over the hem of the skirt, pinning the hem to the inner circle edge ( that was marked with blue pins in the previous step). As you pin, you will notice the flounce spreading out and creating the cool voluminous ruffle. You can conceal the raw edge by sewing it right side to right side, or make it as it is in this creation by sewing it right on top and leaving the serged edges out.

## Step 18



Attach the same way to the waist band seam allowance to create the top flounce. And for the final touch, to really achieve that â—paper bagâ— look- take a long piece of fabric, about 3â— (7.5cm) wide, serge all ends, and create a bow to tie around the waist.

## Step 1 — Sidonie

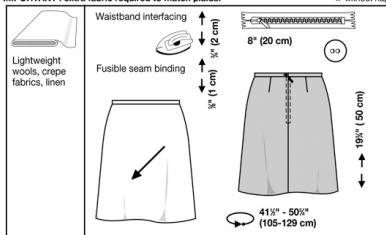
### burda Download-Pattern Skirt 8281 - Instructions

●●□  
easy

fitted

burda sizes	45 ins / 114 cm						55 ins / 140 cm						
	34	36	38	40	42	44	34	36	38	40	42	44	46
Yds	1 1/8	1 1/8	1 1/8	1 1/8	1 1/8	1 1/8	1 1/8	1 1/8	1 1/8	1 1/8	1 1/8	1 1/8	1 1/8
m	1.15	1.15	1.20	1.20	1.25	1.25	1.25	1.25	1.25	1.30	1.30	1.35	1.35
Yds	3/8	3/8	3/8	3/8	3/8	3/8	3/8	3/8	3/8	3/8	3/8	3/8	3/8
m	0.55	0.55	0.56	0.70	0.80	0.90	0.95	0.55	0.55	0.55	0.55	0.55	0.55

IMPORTANT! extra fabric required to match plaids. \* without nap



## PATTERN

- 1 Front skirt panel 1x
  - 2 Back skirt panel 2x
  - 3 Waist band 1x
  - 4 Front skirt panel / lining 1x
  - 5 Back skirt panel / lining 2x
- 

## Step 2



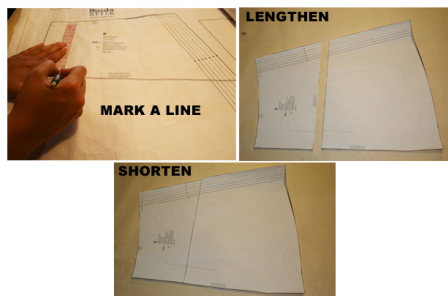
The patterns can be printed out at the copy shop. If you decide to print them at home, follow the instructions:

Paper cut for ANSI A (German DIN A4) prints:

The patterns are printed out on 24 sheets with a thin frame. Wait, until all sheets are printed out. Arrange the sheets so that they fit together (see extra page with the overview of the prints). Cut off the single sheets on the upper and right edge along the thin frame lines. Begin with the left lower sheet and then glue the parts in the frame lines together precisely.

---

## Step 3



### ADJUST PATTERN SIZES

Select your size according to the Burda-dimension table: Dresses, blouses, jackets and coats according to the bust size, trousers and skirts according to the hip width. Change the pattern if necessary, to fit your measurements if they deviate from the Burda-dimension table.

Cut out the pattern according to your size.

Refer to our [Adjust patterns for mixed sizes](#) technique.

### LENGTHENING OR SHORTENING THE PATTERN PIECES ACCORDING TO YOUR SIZE

Our pattern is calculated for a height of 5â—6â— (168 cm). If you are taller or shorter, you may adjust the pattern to fit your size. Choose your size at the lines marked "lengthen or shorten here". Thus the proper fit is preserved. Make sure that you adjust all pieces of one pattern by the same amount at the same lines.

How to lengthen and shorten pattern pieces:

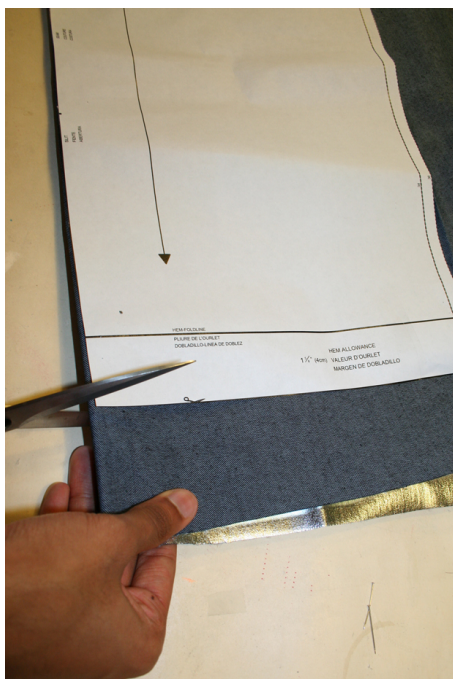
Cut the pattern pieces along the marked lines.

To lengthen, slide the two halves of the pattern piece as far apart as necessary.

To shorten, overlap the two halves of the pattern piece as far as necessary. Even out the side edges.

---

## Step 4



### CUTTING OUT

FOLD (— — — — —) means: here is the center of a pattern piece but never a cut edge or a seam. The piece should be cut double, with the fold line forming the centre line. Pattern pieces that are outlined with a broken line in the cutting diagrams are to be placed face down on the fabric. The cutting diagrams on the pattern sheet show how the pattern pieces should be placed on the fabric.

The cutting diagrams show the placement of the pattern on the fabric.

Cut the pieces 1 and 2 bias.

The checked pattern should match along the side seams and the back center seam. Therefore place the skirt panel pattern onto the fabric in a way that the straight grain arrow runs parallel to the selvage, and the matching checked patterns are laying on top of each other. For a single layer of fabric, the pattern pieces are pinned to the right side. For double layers of fabric, the right sides are facing and the pattern pieces are pinned to the left side. The pattern pieces that are shown in the cutting diagram, extending over the fold of the fabric, should be cut last from a single layer of fabric.

---

## Step 5

SEAM AND HEMLINE ALLOWANCES are included on an average:

1 — (4 cm) hemline, 5/8 — (1.5 cm) for all edges and stitches. Using Burda copying paper, transfer the lines and signs of the pattern onto the left fabric side. You will find instructions in the packaging.

### Lining

Cut the lining according to piece 4 and 5 — please consider the cutting diagrams.

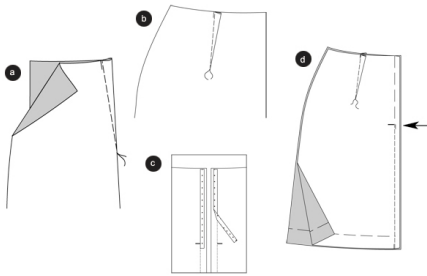
### Sewing

While sewing the right fabric sides are facing.

Transfer all lines of the pattern onto the right fabric side using basting stitches.

---

## Step 6



Skirt

Darts

Pin the darts along the back skirt panels, then stitch to the point. Knot thread ends (a). Press the darts towards the back center (b)

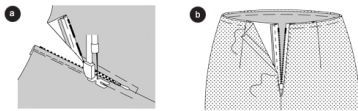
Back center seam

Tip: Apply and press seam stay along the bias cut slit edges of the skirt panels to prevent deforming. Position the back skirt panels on top of each other, the right sides are facing. If you use checkered fabric, pin the matching patterns on top of each other, and pin the needle across the seam. Carefully stitch across the needles, and make sure that the checkered patterns won't move ©.

Baste the center seam, stitch from the slit down to the bottom. Secure seam ends. Keep the slits basted. Trim allowances and press apart. Cut the basting stitches of the slit (d).

---

## Step 7



Zipper

Pin the zipper under the open edges, in such a way that the little teeth are covered. Stitch the zipper using the zipper foot (a).

Side seams

Position the front skirt panel onto the back skirt panel, the right sides are facing. Baste the side seams (seam 1), and stitch. Trim allowances and press apart.

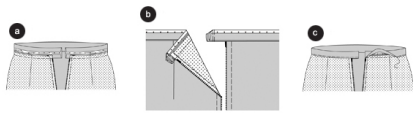
Lining

Stitch the darts of the back skirt panels and press towards the back center. Stitch the back center seam, leave the slit open. Stitch the side seams (seam 7). Trim allowances and press apart.

Pull the lining over the skirt, the left sides of the fabrics are facing. Pin the upper edge onto the side seams meet. Pin the open edges onto the zipper straps and sew by hand (b).

---

## Step 8



Waistband of the skirt

Press the waistband interfacing onto the left waistband.

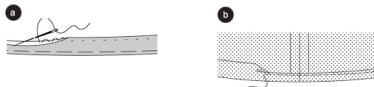
Baste the waistband onto the upper skirt edge (seam 8). Thereby allow the seam allowance of the right back skirt panel to overlay. Stitch. Secure thread ends. Press the allowances in towards the waistband. Fold the allowance of the long edge inside and press (a).

Fold the waistband along the fold line, the right side inside. Stitch the seam allowance on top of each other. Trim allowances. Cut the corners bias (b).

Fold the waistband inside and pin along the seam. Press. Stitch all waistband edges narrowly, thereby stitching the inner half onto the seam. Apply a **BUTTONHOLE** onto the left waistband. Sew a **BUTTON** onto the seam allowance ©.

---

## Step 9



Hemline

Neaten hemline; fold inside and pin, then press. Sew the hemline by hand easily (a).

Hemline of the lining

Fold the hemline inside and press. Pin. The lining should be approximately 1.5 cm shorter than the skirt. Stitch the hemline narrowly (b).

---

**BurdaStyle**

*Sidonie Variation 1*