

# Anda

By: BurdaStyle

<http://www.burdastyle.com/projects/anda>



The Anda Dress is a quick and easy project, and is great for beginners. For more experienced crafters, try altering the pattern or employing some fascinating fabric treatment for a more advanced project.

## Materials

Chiffon lame, elastic

## Step 1

burda Download-Pattern  
Dress 7969 - Instructions

very easy      semi fitted

	46-50 in / 114 cm					56-60 in / 140 cm				
burda sizes	34	36	38	40	42	44	46	48	50	52
Bust	33 1/2	35 1/2	37 1/2	39 1/2	41 1/2	43 1/2	45 1/2	47 1/2	49 1/2	51 1/2
Waist	29 1/2	31 1/2	33 1/2	35 1/2	37 1/2	39 1/2	41 1/2	43 1/2	45 1/2	47 1/2
Hip	35 1/2	37 1/2	39 1/2	41 1/2	43 1/2	45 1/2	47 1/2	49 1/2	51 1/2	53 1/2

\* without nap      **IMPORTANT!** extra fabric required to cross figured fabrics

1 1/2-2 1/2 yds (1.40 m - 1.85 m)      20"-24" (50 cm - 65 cm)

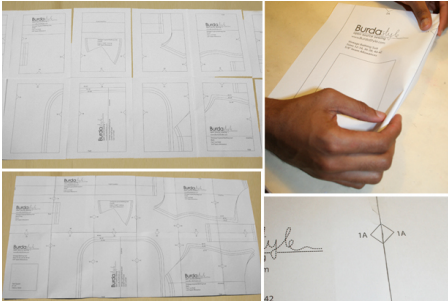
right side  
wrong side  
interfacing  
lining  
batting

Pattern pieces:  
1 Front 1x  
2 Back 1x  
3 Casing Strip 2x  
4 Tie Band 2x

### PATTERN PIECES:

- 1 Front 1x
- 2 Back 1x
- 3 Casing Strip 2x
- 4 Tie Band 2x

## Step 2



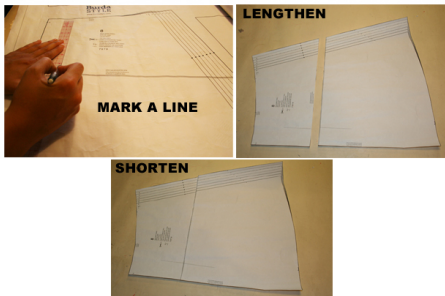
The patterns can be printed out at the copy shop. If you decide to print them at home, follow the instructions:

Paper cut for ANSI A (German DIN A4) prints:

The patterns are printed out on 28 sheets with a thin frame. Wait until all sheets are printed out. Arrange the sheets so that they fit together (see additional page with the overview of the prints). Fold the single sheets on the upper and right edge along the thin frame lines. Begin with the left lower sheet and then tape the frame lines together precisely.

---

## Step 3



### ADJUST PATTERN SIZES

Select your size according to the Burda-dimension table: dresses, blouses, jackets and coats according to the bust size, trousers and skirts according to the hip width. Change the pattern to fit your measurements if they deviate from the Burda-size chart. Cut out the pattern according to your size.

Refer to our ["Adjust patterns for mixed sizes"](#) technique

### LENGTHENING OR SHORTENING THE PATTERN PIECES

Our pattern is calculated for a height of 5'6" (168 cm). If you are taller or shorter, you can adjust the pattern pieces along the lines marked "lengthen or shorten here". This way the proper fit is maintained. Always adjust all pattern pieces along the same line to the same degree.

How to lengthen and shorten pattern pieces:

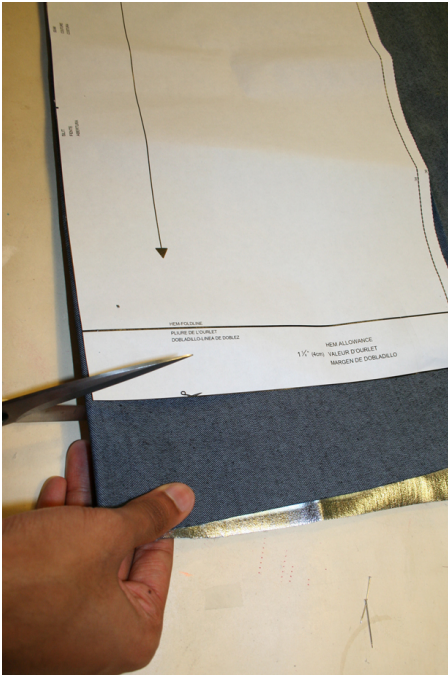
Cut the pattern pieces along the marked lines

To lengthen, slide the two halves of the pattern piece as far apart as necessary.

To shorten, overlap the two halves of the pattern piece as far as necessary. Blend the side edges.

---

## Step 4



### CUTTING OUT

**FOLD** (â" â" â" â") means: Cut on the fold, the fold being the center of the pattern piece, but never a cut edge or seam. The piece should be cut double, with the fold line forming the center line. Pattern pieces that are outlined with a broken line in the cutting diagrams are to be placed face down on the fabric. The cutting diagrams on the pattern sheet show how the pattern pieces should be placed on the fabric.

The cutting diagrams show the placement of the pattern on the fabric.

For a single layer of fabric, the pattern pieces are pinned to the right side. For double layers of fabric, the right sides are facing and the pattern pieces are pinned to the wrong side. The pattern pieces that are shown extending over the fold of the fabric in the cutting diagram should be cut last from a single layer of fabric.

---

## Step 5

**SEAM AND HEMLINE ALLOWANCES** are included on an average:

1 5â"8" (4 cm) for hem, 5/8â" (1.5 cm) for all edges and stitches. Using BURDA copying paper, transfer the lines and signs of the pattern onto the wrong side of the fabric. Instructions can be found in the packaging.

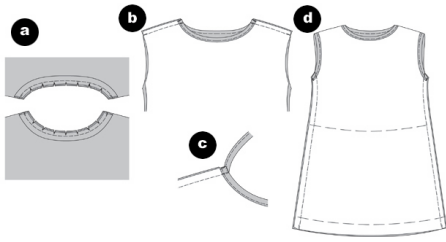
### Sewing

While sewing, the right sides of the fabric are facing.

Transfer all lines of the pattern onto the right side of the fabric using basting stitches.

---

## Step 6



## DRESS

### Neckline / Bias Tape

Fold bias tape in half lengthwise, press. Trim the allowance at front and back edge of neckline to 1 1/4" (0.7 cm).

Baste bias tape right sides together with front and back edge of neckline so that the open edges lie on the seam allowance. Stitch bias tape 1 1/4" (0.7 cm) wide. Trim allowances, clip curves. Turn bias tape to inside, baste and press. Topstitch 3/16" (0.5 cm) next to edge of neckline, catching bias tape. (a)

### Shoulder Seams

Lay front right sides together with back. Baste shoulder seams (seam number 1) and stitch. Trim seam allowances, neaten together and press onto back (b). Sew seam allowances to bias tape ©.

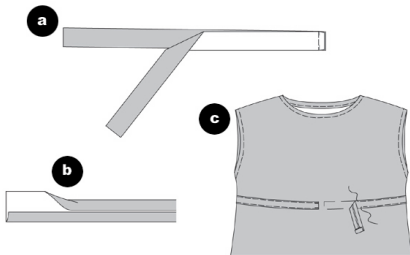
### Armholes / Bias Tape

Neaten edges of armholes as instructed for neckline.

### Side Seams / B Slits

Lay front right sides together with back. Baste side seams (seam number 2). Stitch side seams from upper to lower edges. Secure ends of stitching. Neaten seam allowances and press open. (d)

## Step 7



### Drawstring Casing

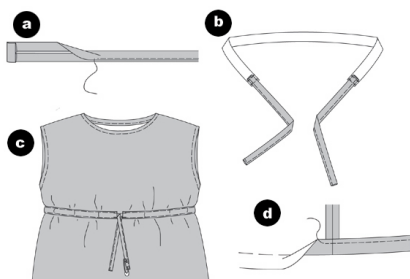
Lay casing strips (A piece 3) right sides together and stitch center back seam. Press seam allowances open. (a)

Press lengthwise edge of casing to center. (b)

Baste casing strip on right fabric side of front and back pieces over marked lines. Turn in ends of casing strip in front. Stitch casing close to edges. Secure ends of stitching. ©

TIP: It will be easier to pin on the casing strip if you slip the dress/tunic over your ironing board.

## Step 8



### Tie Bands

Press allowance at long edges to center. Press one end of each tie band to wrong side. Press strips in half, wrong side facing in. Stitch together close to edges. (a)

Stitch open ends of tie bands onto ends of elastic. (b)

Use a safety pin as a bodkin to insert tie bands with elastic through casing. ©

### Hem

Neaten hem, turn in, baste and press. Topstitch lower edge 1 1/2" (3.5 cm) wide, catching hem. (d)

Turn slit allowances to inside again, baste in place. Topstitch slit edges 1 1/2" (1.2 cm) wide, catching allowances.