

Ellinor

By: BurdaStyle

<http://www.burdastyle.com/projects/ellinor>



Our version of Ellinor is an embroidered Chiffon with Sequin. Choose a cotton and you have a great everyday blouse. The original pattern suggests adding a decorative trim to the neckline, which dangles down in the front. We left this detail out since our fabric was already so rich, but see for yourself...

Materials

Chiffon with sequins

Step 1

burda Download-Pattern
Blouse 8516 - Instructions

very easy

semi-fitted

Size	XS	S	M	L	XL	XXL	XXXL	4XL	5XL	6XL	7XL	8XL	9XL	10XL
Bust	85	90	95	100	105	110	115	120	125	130	135	140	145	150
Waist	70	75	80	85	90	95	100	105	110	115	120	125	130	135
Length	65	68	71	74	77	80	83	86	89	92	95	98	101	104

with nap without nap

right side
wrong side
interfacing
lining
batting

Pattern pieces: 1, 2, 3

43" - 51" (110 - 130 cm)
38" - 39" (73 - 75 cm)

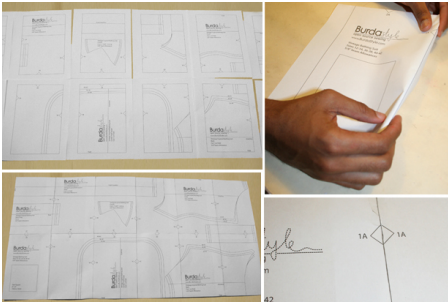
51" - 31" yds. (2.90 - 3.20 m)

Elastic thread

Cotton, rayon, other fabrics

- 1 Front Piece 2x
- 2 Back Piece 1x
- 3 Sleeves 2x
- 4 Bias/ Neck Line 1x

Step 2

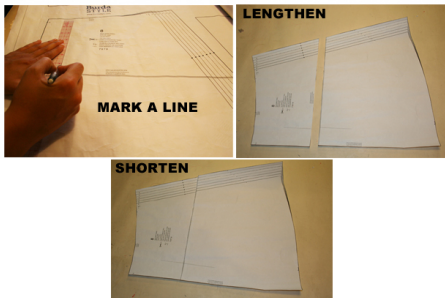


The patterns can be printed out at the copy shop. If you decide to print them at home, follow the instructions:

Paper cut for ANSI A (German DIN A4) prints:

The patterns are printed out on 32 sheets with a thin frame. Wait until all sheets are printed out. Arrange the sheets so that they fit together (see additional page with the overview of the prints). Fold the single sheets on the upper and right edge along the thin frame lines. Begin with the left lower sheet and then tape the frame lines together precisely.

Step 3



ADJUST PATTERN SIZES

Select your size according to the Burda-dimension table: dresses, blouses, jackets and coats according to the bust size, trousers and skirts according to the hip width. Change the pattern to fit your measurements if they deviate from the Burda-size chart. Cut out the pattern according to your size.

Refer to our ["Adjust patterns for mixed sizes"](#) technique

LENGTHENING OR SHORTENING THE PATTERN PIECES

Our pattern is calculated for a height of 5â€¦ 6â€¦ (168 cm). If you are taller or shorter, you can adjust the pattern pieces along the lines marked "lengthen or shorten here". This way the proper fit is maintained. Always adjust all pattern pieces along the same line to the same degree.

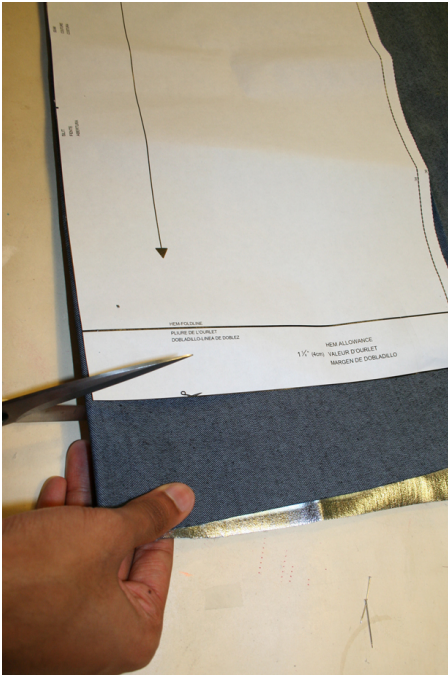
How to lengthen and shorten pattern pieces:

Cut the pattern pieces along the marked lines

To lengthen, slide the two halves of the pattern piece as far apart as necessary.

To shorten, overlap the two halves of the pattern piece as far as necessary. Blend the side edges.

Step 4



CUTTING OUT

FOLD (â... â... â... â...) means: Cut on the fold, the fold being the center of the pattern piece, but never a cut edge or seam. The piece should be cut double, with the fold line forming the center line. Pattern pieces that are outlined with a broken line in the cutting diagrams are to be placed face down on the fabric. The cutting diagrams on the pattern sheet show how the pattern pieces should be placed on the fabric.

The cutting diagrams show the placement of the pattern on the fabric.

For a single layer of fabric, the pattern pieces are pinned to the right side. For double layers of fabric, the right sides are facing and the pattern pieces are pinned to the wrong side. The pattern pieces that are shown extending over the fold of the fabric in the cutting diagram should be cut last from a single layer of fabric .

Step 5

SEAM AND HEMLINE ALLOWANCES are included on an average:

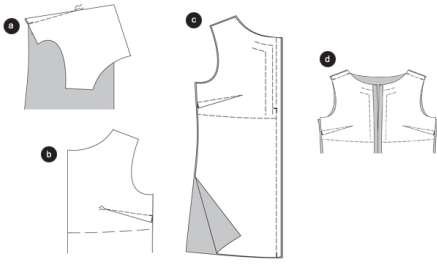
1 5â8" (4 cm) for hem, 5/8â... (1.5 cm) for all edges and stitches. Using BURDA copying paper, transfer the lines and signs of the pattern onto the wrong side of the fabric. Instructions can be found in the packaging.

Sewing

While sewing, the right sides of the fabric are facing.

Transfer all lines of the pattern onto the right side of the fabric using basting stitches.

Step 6



BLOUSE

Pin chest darts and stitch each dart from edge to the point. (a) Iron the darts to the bottom (b).

Front Middle Seam/ Slit

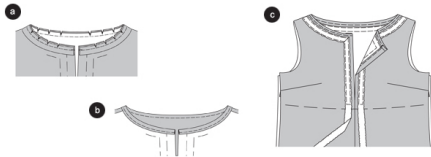
Place front pieces onto each other right sides facing, pin middle seam.

Stitch middle seam from the slit mark downward. Leave slit pinned. Trim seam allowances and finish. De-baste basting stitches at slit. ©

Shoulder Seams

Place front piece right sides facing onto back piece, stitch shoulder seams (seam number 1). Trim seam allowances and finish. (d)

Step 7



Neckline/Bias

Trim seam allowance at neckline back to 1 cm (3/8 inch) Fold bias into half lengthwise, wrong side inside. Iron.

Place seam allowances onto the slit. Pin bias onto the neckline working from the right, the upper edges are lying atop the seam allowance. Stitch bias allowing 1 cm (3/8 inch). Trim seam allowances, cutting in at curved edges. (a)

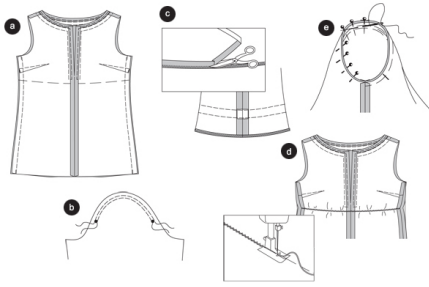
Iron the bias over the base seam. Fold the bias over and pin. Stitch neckline allowing 0.7 cm (1/4 inch). (b)

Edging/ Neckline

Cut the two pieces for the sleeves from the edging. Mark the middle at the remaining edging (back middle)

Turn slit seam allowances inside, pin. Pin edging to the neckline and along the slit edges leaving 1.2 cm (1/2 inch) of space, placing the lace edging towards the pleats at the edges. Stitch the edging until you reach the horizontal marks, taking in the slit seam allowances. Leave the edging ends hanging, cut diagonally at bottom. Sew slit seam allowances by hand at the upper neckline. ©

Step 8



Side Seams

Place front piece right sides facing onto the back piece, pin side seams (seam number 2) and stitch. Trim seam allowances and finish. (a)

Sleeves

To put sleeve into place, stitch from dot symbol to dot symbol twice with wide stitches. Pin edging onto the sleeves as marked and stitch neatly. Fold sleeves lengthwise, right side inside. Stitch sleeve seams (seam number 3). Trim seam allowances and finish. (b)

Lower Sleeve Edge

Fold over and iron the seam allowance of the lower sleeve edge. Stitch fabric fold line with narrow zigzag stitches. Cut overlapping seam allowance close to the seams. ©

Tip: Do a test run with a piece of scrap fabric. Test stitch and thread tension. Use Machine or quilting thread.

Elastic Band

Stitch on top of one elastic band coming from the left front piece, going along the marked lines with zigzag stitches, do not take in the elastic band. Pull elastic band lightly. Try on and test width, distributing evenly. Tie bands and sew. (d)

Setting in Sleeves

To set in the sleeves, pull bobbin thread of the stitching lines lightly.

Pin sleeves right on right into arm opening. When setting in sleeves, 4 points are important for proper fit – The horizontal marks (7) on sleeve and bodice front must match. Sleeve seam and side seam must match. The horizontal mark on sleeve cap must match shoulder seam. The gathering must be distributed evenly. Working from the sleeve side, baste sleeve to armhole edge and stitch. Trim seam allowances. Finish seam allowances and press toward sleeve. Trim the lower blouse edge. (e)