

Shari

By: BurdaStyle

<http://www.burdastyle.com/projects/shari>



This skirt of this dress is cut on bias, hence the beautiful flow. The inset is framed by piping. Learn how to make your own piping in the related technique, so you can create a piping that matches the fabric of the inset. Or make a statement with contrasting inset and piping colors.

Materials

Japanese print, crinkled silk

Step 1

burda Download-Pattern
Dress 7951 - Instructions

●●● average

average	semi fitted					
burda sizes	36 - 38	40 - 42	44 - 46	48 - 50	52 - 54	56 - 58
chest (cm)	91	95	101	107	113	119
chest (in)	36	38	40	42	44	46
waist (cm)	76	80	86	92	98	104
waist (in)	30	32	34	36	38	41
length (cm)	100	100	100	100	100	100
length (in)	39	39	39	39	39	39

• without nap

right side
wrong side
interfacing
lining
batting

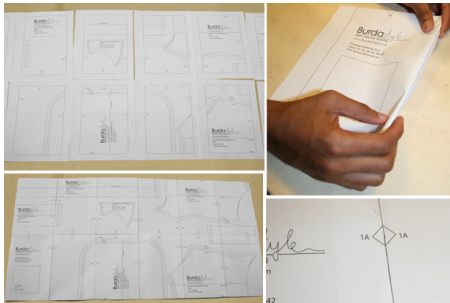
Interfacing: 24" x 14" (60 cm x 35 cm)
invisible zipper: 24" (60 cm)
Piping tape: 2x 3/4 yds (2.40 - 3.00 m)

Linen blends, lightweight viscose-rayon, georgette

Patternpieces:

- 1 Front piece 2x
- 2 Back piece 2x
- 3 Front yoke 1x
- 4 Back yoke 2x
- 5 Front skirt panel 2x
- 6 Back skirt panel 2x

Step 2

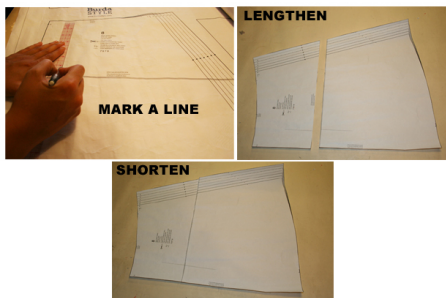


The patterns can be printed out at the copy shop. If you decide to print them at home, follow the instructions:

Paper cut for ANSI A (German DIN A4) prints:

The patterns are printed out on 30 sheets with a thin frame. Wait, until all sheets are printed out. Arrange the sheets so that they fit together (see extra page with the overview of the prints). Cut off the single sheets on the upper and right edge along the thin frame lines. Begin with the left lower sheet and then glue the parts in the frame lines together precisely.

Step 3



ADJUST PATTERN SIZES

Select your size according to the Burda size chart: Dresses, blouses, jackets and coats according to the bust size, trousers and skirts according to the hip width. Change the patterns according to size (inches or cm) if necessary, to fit your measurements if they deviate from the Burda size chart. (a)

Cut out the pattern according to your size.

Refer to our "Adjust patterns for mixed sizes" technique

LENGTHENING OR SHORTENING THE PATTERN PIECES

Our pattern is calculated for a height of 5'6" (168 cm). If you are taller or shorter, you may adjust the pattern to fit your size at the lines marked "lengthen or shorten here". Thus the fit is preserved. Extend all pattern pieces along the cutting lines for the same length. (b)

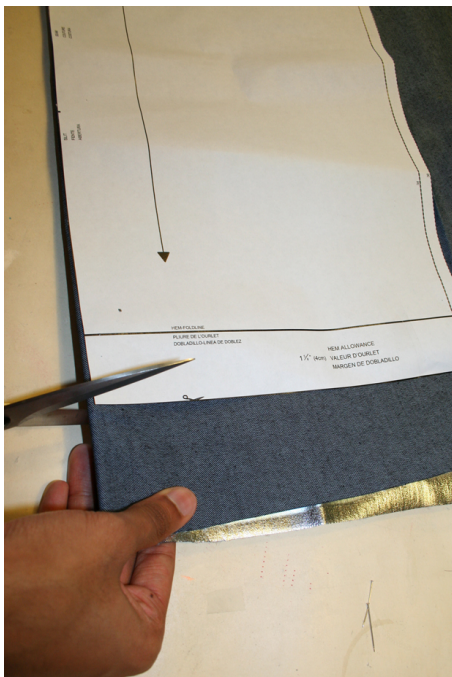
How to lengthen and shorten pattern pieces:

Cut the pattern pieces along the marked lines.

To lengthen, slide the two halves of the pattern piece as far apart as necessary.

To shorten, overlap the two halves of the pattern piece as far as necessary. Even out the side edges. ©

Step 4



CUTTING OUT

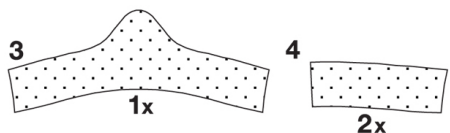
FOLD (â" â" â" â") means: here is the center of a pattern piece but never a cut edge or a seam. The piece should be cut double, with the fold line forming the centre line. Pattern pieces that are outlined with a broken line in the cutting diagrams are to be placed face down on the fabric. (a)

The cutting diagrams on the pattern sheet show how the pattern pieces should be placed on the fabric.

For a single layer of fabric, the pattern pieces are pinned to the right side of the fabric. For double layers of fabric, the right sides are facing and the pattern pieces are pinned to the left side. The pattern pieces that are shown in the cutting diagram, extending over the fold of the fabric, should be cut last from a single layer of fabric. (b)

Step 5

INTERFACING



SEAM AND HEMLINE ALLOWANCES are included on an average:

5/8â" (1.5 cm) for all edges and seams. Use BURDA carbon paper to transfer all pattern lines and markings to the left side of the fabric pieces. You will find instructions in the packet.

Lining

Cut the lining pieces 1 to 6. Cut the pieces 5 and 6 bias. See pattern.

Interfacing

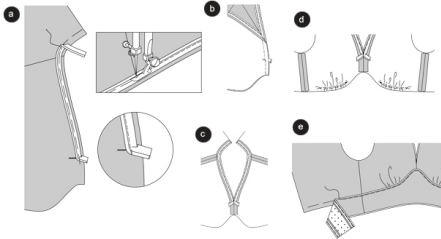
Cut interfacing according to drawing and press it onto the wrong fabric side.

SEWING

When sewing the right fabric sides are facing.

Transfer all lines on the pattern using a basting stitch to the right fabric side.

Step 6



DRESS

Seams at upper piece, shoulders and sides

Position the front piece on top of the back piece, right sides facing. Baste the shoulder seams (seam 1), easing as necessary. Baste the side seams (seam 2). Stitch seams. Press allowances apart.

Neckline / piping

Baste the right side of the piping strap onto the neckline; the strap is now positioned on the allowance. At the center front, the piping strap has to be folded to the side. Stitch the piping closely along the piping strap, using a one sided edge-stitch-foot or a zipper foot.

(a)

Center Front Seam

Position front pieces on top of each other, the right sides facing; stitch the center front seam, catching the piping allowance but not sewing through the piping. Secure thread ends. Press allowances apart (b). Fold allowance of top and piping inwards and baste in place ©.

Double stitching of the front piece

Stitch the front piece from * to * twice and parallel using long, loose stitches to gather the bust. Tighten the under threads to the length of the front yoke. Knot thread ends. Space the gathers equally. (d)

Yoke / side seams

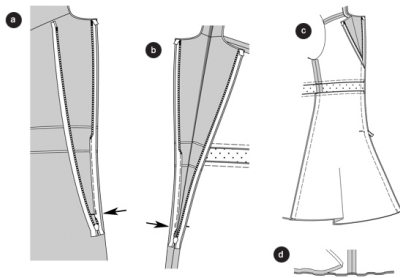
Position back yokes onto the front yokes with right sides facing, baste side seams (seam 3) and stitch. Press allowances apart.

Stitch the piping onto the top and bottom yoke edges according to the text and drawing. Fold allowances inwards and baste in place.

Stitch yoke onto the front piece

Baste the yoke onto the bottom edge of the front piece, the wrong yoke side facing the right front piece side (seam 5). Side seams meet. Topstitch the yoke to the bodice closely along the piping using a one-sided presser foot or zipper foot. (e)

Step 7



SKIRT / front center seam

Position front skirt panels with the right sides facing, baste center seam and stitch. Trim allowances, neaten altogether and press apart.

Side seams

Position back skirt panels onto the front skirt panels, right sides facing, baste side seams (seam 4) and stitch. Trim allowances and press towards the back skirt panels.

Stitch the yoke onto the upper skirt edge

Baste the yoke onto the upper skirt edge right sides facing (seam 6); side seams meet. Stitch yoke closely along the piping using a one-sided edge stitching tootsie (see drawing 4).

Zipper

Use an invisible zipper for closure.

Open zipper and pin it's right side onto the allowances of the inner (wrong fabric side) edge. Start doing so from the upper neckline edge. The zipper teeth have to be very exactly positioned onto the marked slit edges. Stitch the zipper along the edge of the fabric keeping as close to the zipper teeth as possible; using a special zipper foot (a). Stitch the other part of the zipper onto the other slit edge (b). Stitch along the slit edges from the top down to the slit signs (arrows). Since the zipper teeth have the tendency to roll in, the special zipper tootsies will keep them flat. It is an advantage if the zipper is longer than the slit. If you are done attaching the zipper, close it.

Back center seam

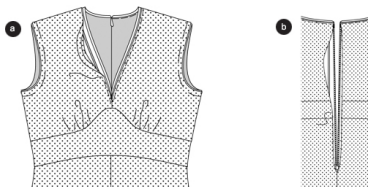
Position back pieces on top of each other right sides facing, stitch the center seam, keeping as close to the slit as possible. Slightly pull the zipper. Secure thread ends. Neaten allowances and press them apart. ©

Hem

Fold and press hem allowances. Stitch the folding edge using a tight zig zag stitch. Trim the allowances close to the stitches. (d)

TIP: Make a test using a remnant. Use machine darning thread. Test and vary the stitch adjustment and thread tension.

Step 8



LINING:

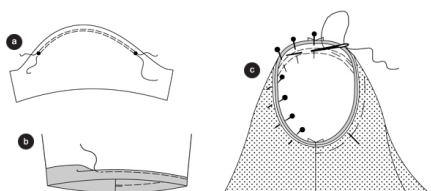
Stitch the lining dress pattern pieces together; the same seam numbers of the pattern are meeting. Important: Stitch the front center

seam up to the cross line. Secure seam ends. Stitch the yoke onto the bottom fabric piece edge, right sides facing. Trim allowances and press inwards into the yoke. In the same way stitch the bottom yoke edge onto the upper skirt edge.

Pull the lining onto the dress, wrong sides facing, seams meet. Baste the lining onto the armpits. Baste the lining along the neckline onto the yoke allowance and zipper allowance. Topstitch the neckline. (a)

Sew the lining by hand onto the zipper allowance. (b)

Step 9



Sleeves

To create the sleeve cap, stitch twice and parallel between \hat{a} and \hat{a} using a long, loose basting stitch. Space out the gathers. Fold the sleeve lengthwise, right side inside. (a)

Stitch sleeve seams (seam 7). Trim allowances, neaten altogether and press towards one side.

Fold and press the sleeve hem, fold again and pin. Stitch the hem. (b)

Apply sleeves

To ease the sleeve in, first tighten the under threads of the seams slightly.

Pin the sleeves onto the armhole right sides facing. 4 points are essential for the fit of the dress when you apply the sleeves: The cross lines of the top sleeve and the front piece have to meet. The cross line of the bottom sleeve has to meet the side seams. The cross line of the sleeve rounding has to meet the shoulder seam. The gathers of the sleeve have to be spaced out to prevent pleats. Baste and stitch the sleeve from the inside of the sleeve. Trim allowances, neaten altogether and press inwards into the sleeve. ©

Neaten the bottom interfacing edge.
