

Ulla-Maaria

By: BurdaStyle

<http://www.burdastyle.com/projects/ulla-maaria>

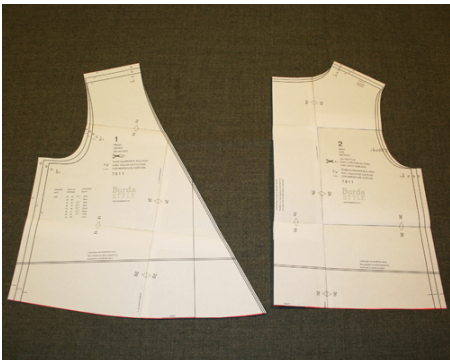


See how to create this chic look. Using the Desira bodice and Jennifer sleeve as our blocks, we made this classic knit wrap dress. Easy and comfortable on almost every body type, the knit dress works for many occasions!

Materials

Materials: [Desira](#) and [Jennifer](#) patterns, patternmaking supplies: [dot paper](#), tape, [clear ruler](#), [French curves](#), pencil, [tracing wheel](#).

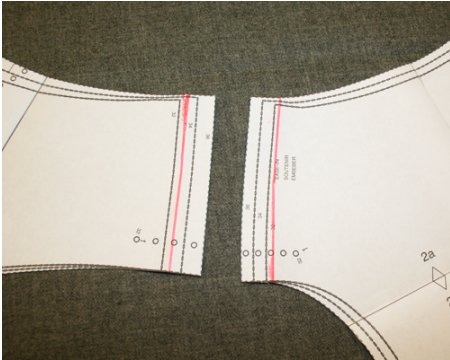
Step 1



Cut out front and back bodice pieces of the Desira in your size (weâre using size 36). Mark off the waistline 1â below the waist

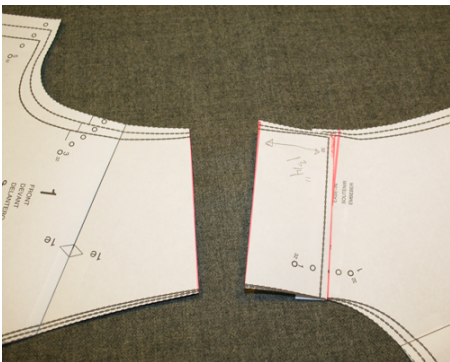
notches and cut away.

Step 2



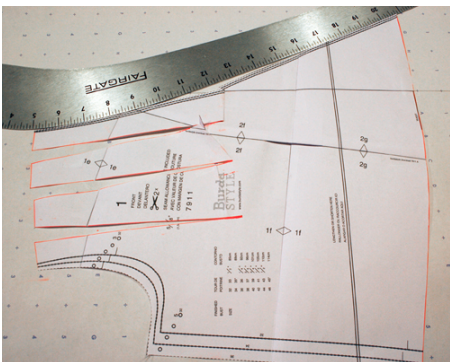
Mark off shoulder seam allowances.

Step 3



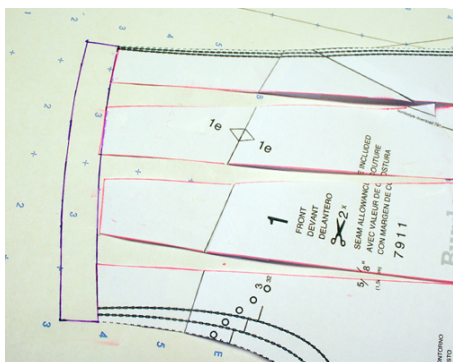
Fold back the front bodice seam allowance. Tape the shoulders together, matching at the neckline (we'll eliminate the ease later). Mark off 1/4" toward the front bodice from the shoulder seam. Cut away at this line.

Step 4



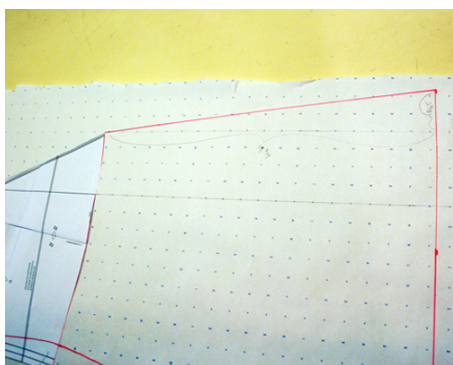
Draw three slash lines to just above the bust point. Draw a straight line on a dot paper, and align the bodice's grainline to it; tape near grainline. Spread each slash line about 1/2"; flatten excess paper where necessary, tape down. We've just created shirring at the shoulder seam. Take your hip curve and draw a nice shape at the neckline edge.

Step 5



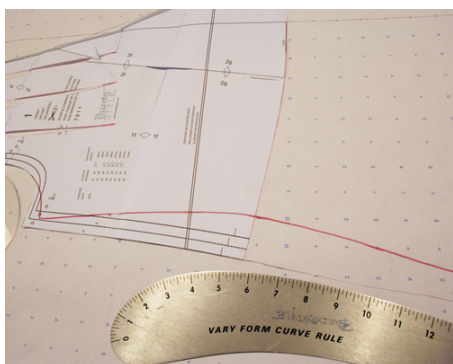
Smooth the shoulder seam and add seam allowance.

Step 6



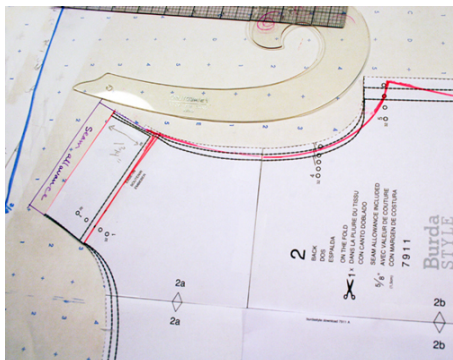
From center front waistline, extend line straight down about $19\frac{3}{4}$, then over $2\frac{3}{8}$. Connect waistline to the $2\frac{3}{8}$ out point.

Step 7



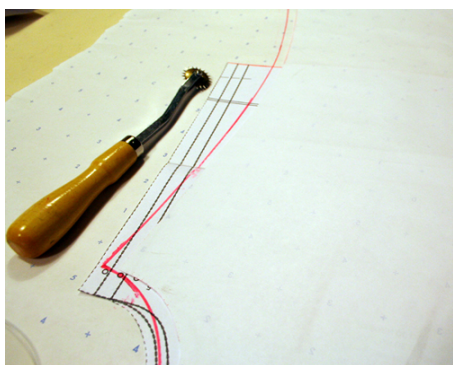
Extend side seam down $20\frac{3}{4}$. Move waist in $1\frac{1}{2}$, lower armhole $\frac{5}{8}$ and in $\frac{1}{2}$. Use your curves to to smoothen lines and draw the hem.

Step 8



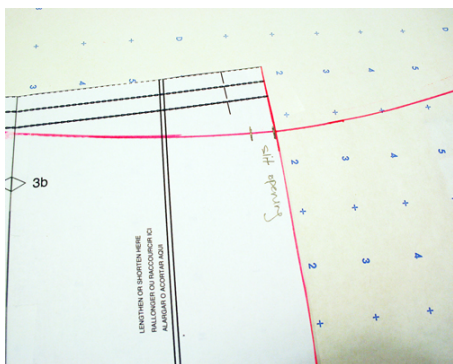
Lower back armhole $\frac{3}{4}$ " and in $\frac{1}{8}$ ". Blend back armhole to meet the shoulder extension we created earlier.

Step 9



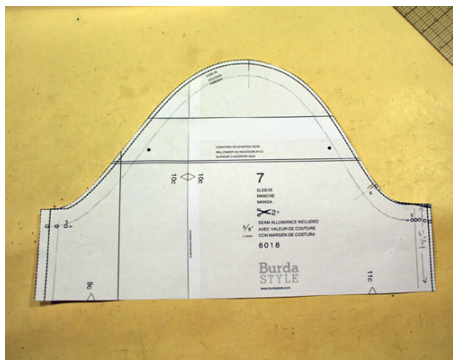
With right sides facing, line up the front pattern piece and the back pattern piece from the underarm. Trace the sideseam. Draw sideseam and hem of the back piece.

Step 10



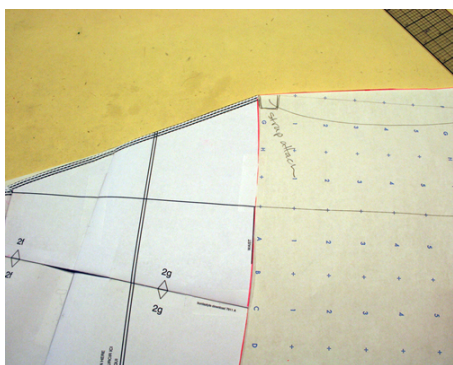
Mark an opening for the tie to pass through at the waist. (When sewing, the opening will be on the left side only.)

Step 11



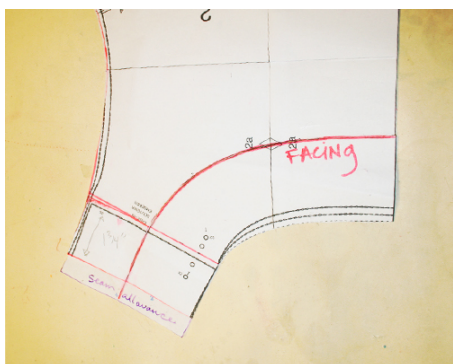
We use the Jennifer sleeve, just shorten it to your liking.

Step 12



This is where the tie straps should attach. We made ours by cutting 2 rectangles 50 x 2 1/4 (that includes 5/8 seam allowance).

Step 13



Mark 2 all around front/neckline edge, back neckline, and sleeve hem. These are your facings.

Step 14



Construction Advice: Knits are easiest to work with if you have an overlock machine, but many regular home sewing machines have stretch options now, too.

BurdaStyle

Ulla-Maaria