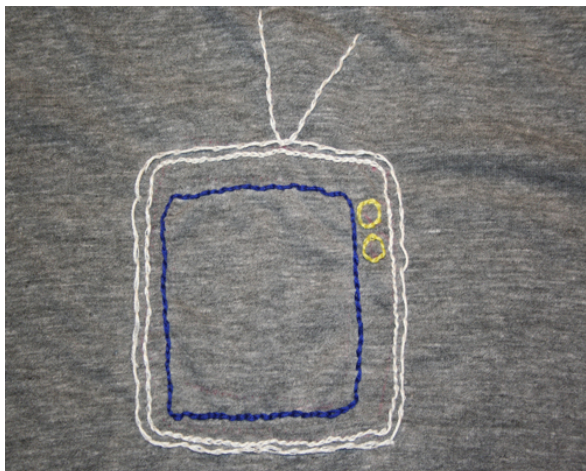


Embroidery Chain Stitch

By: BurdaStyle

<http://www.burdastyle.com/techniques/embroidery-chain-stitch>



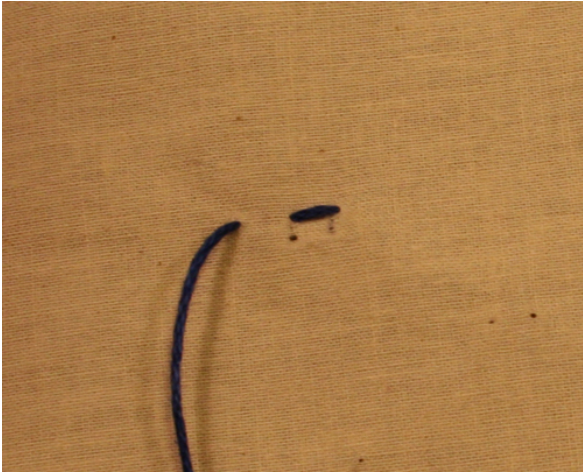
We used this knot in one of our Valentine's Day t-shirts. By adjusting the length of the stitches you can change the texture of the stitch.

Step 1



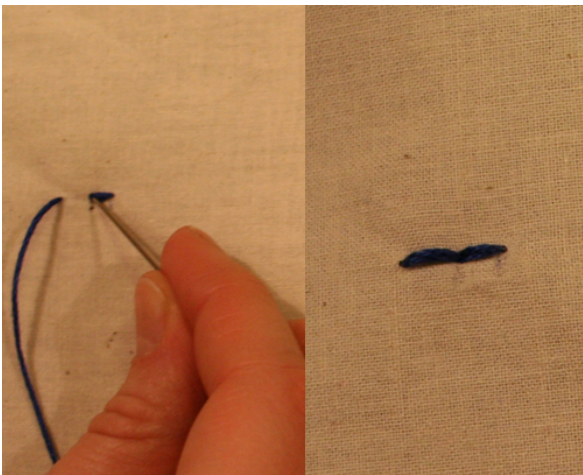
The chain stitch is a normal top stitch from back to front. Insert the needle from the inside of the garment, to the outside, and back to the inside.

Step 2



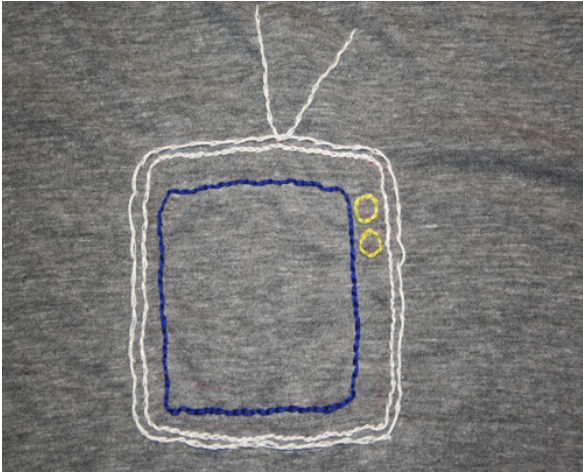
Maintaining the same length as the previous stitch, bring the needle back up, to the outside of the garment.

Step 3



Instead of making another stitch forward, put the needle through the end of the previous stitch (front to back).

Step 4



Repeat repeat repeat until...

BurdaStyle

Embroidery Chain Stitch