

Classic Circle Skirt

Circle Skirt

A favorite of the wind, the Classic Circle Skirt is free-flowing and easy-going.

This is the year when we cast our memories back to the hazy summer days of the 70's. Unearthing and breathing fresh life into the beloved era of big hair, free flowing dresses and flowers in our hair—it is the year of boho chic.

Pattern information

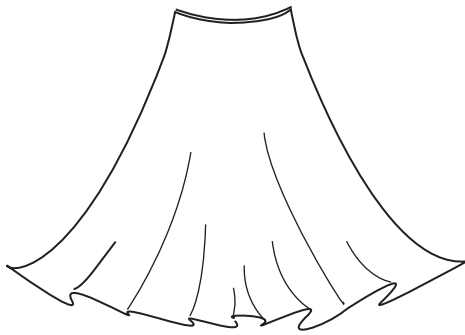
Suggested fabrics: Ideal for cotton, light-weight corduroy, silk charmeuse, stretch fabrics, poly or cotton poplin, or cotton batiste. **without nap.

Lining (optional)

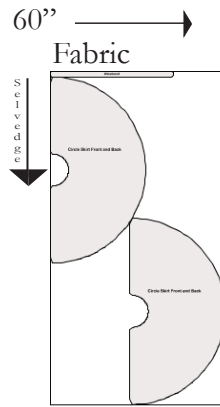
Notions: 8-10" zipper, hooks and eyes

The pattern is created for You

info@thunderlily.com



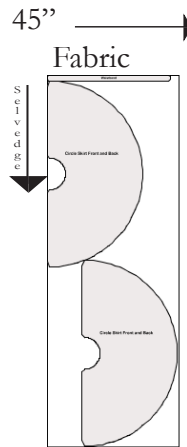
Fabric cutting layout



Fabric requirements

60" 3 1/4yd.

45" 3 3/4yd.

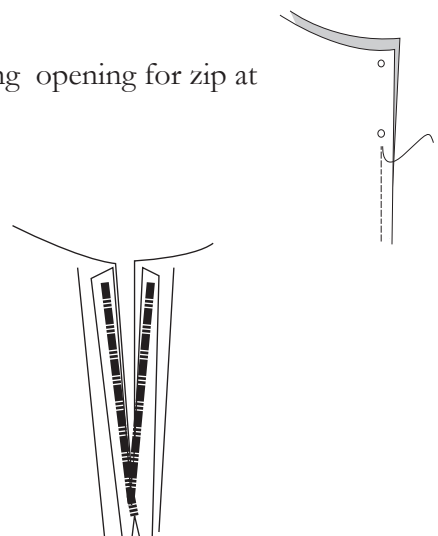


Sewing Instructions

1. With right sides together, pin front and back of skirt at sides. Sew, leaving opening for zip at marker.

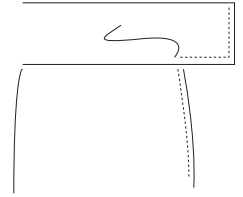
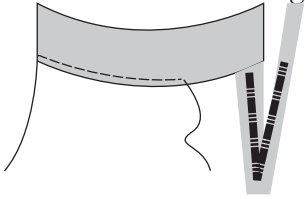
Zipper

2. Using widest possible machine stitch sew together skirt between circles. Press flat.
3. Place zipper face down, lining it up with the crease. Sew each side of zipper to seam allowance (note, this attaches the zipper to the seam allowance only, and should not be visible on the front of the skirt.)
4. Hand stitch length of zipper through all layers of fabric, using short stitches. Using a seam-ripper open the wide-stitched seam (#2)



Waistband

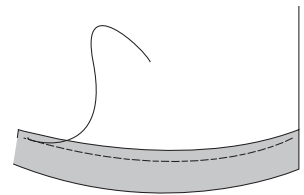
5. Place interfacing on inside of Waistband. Secure in place.
6. Starting at Back right edge, pin right side of waistband, to right side of skirt. Sew. Press.
7. Fold Waistband along center fold, with right sides together. Sew open ends of overlap.

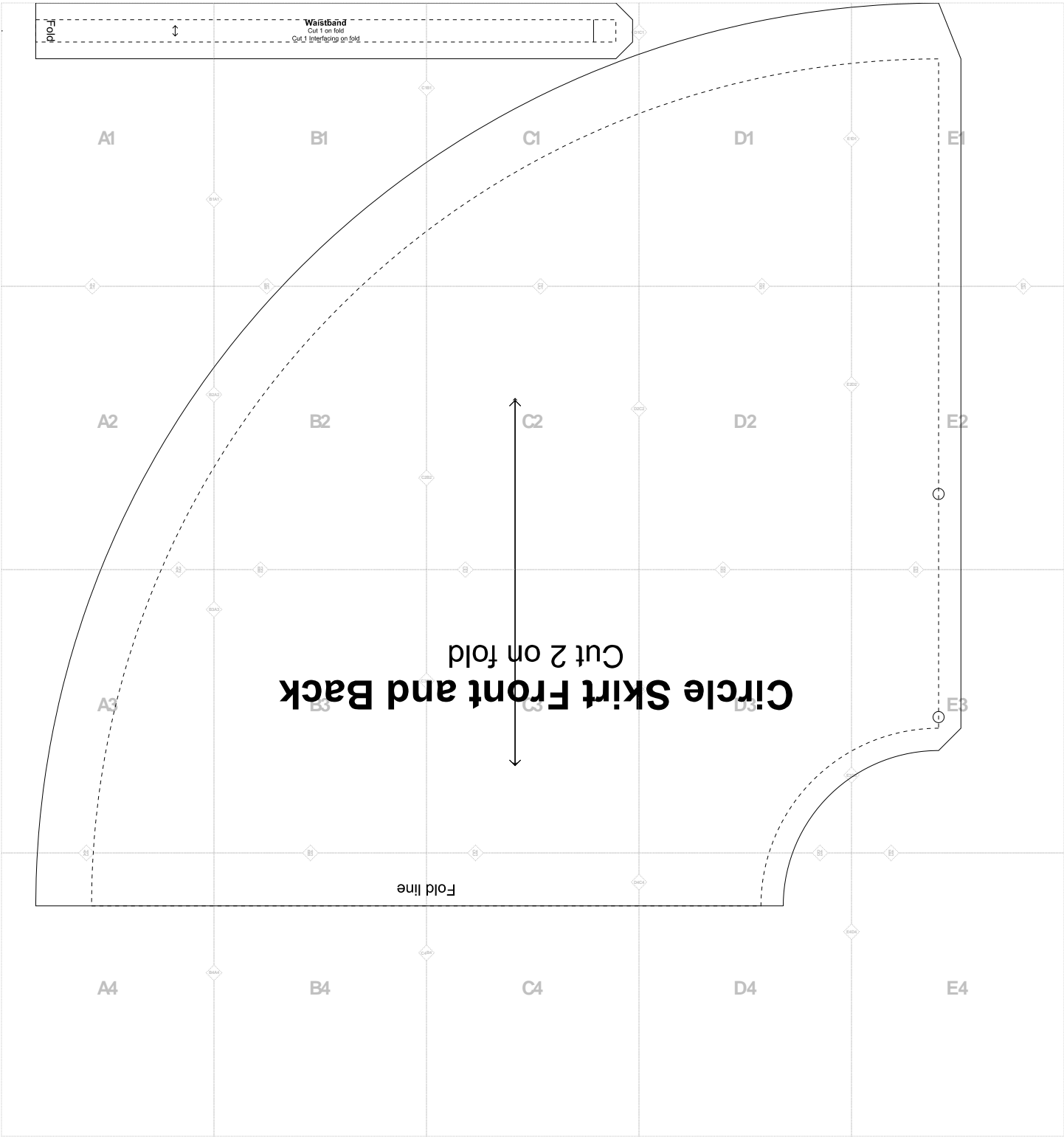


8. Fold towards inside of skirt along fold line and press. Fold under seam allowance of waistband. Hand stitch on inside of skirt.

Finishing

9. Fold in hem allowance on fabric. Pin and handstitch using hemstitch.
10. Add hooks and eyes to waistband at opening.





Fold



B1

A1
THUNDERLIY 

A2

Waistband

Cut 1 on fold

Cut 1 Interfacing on fold

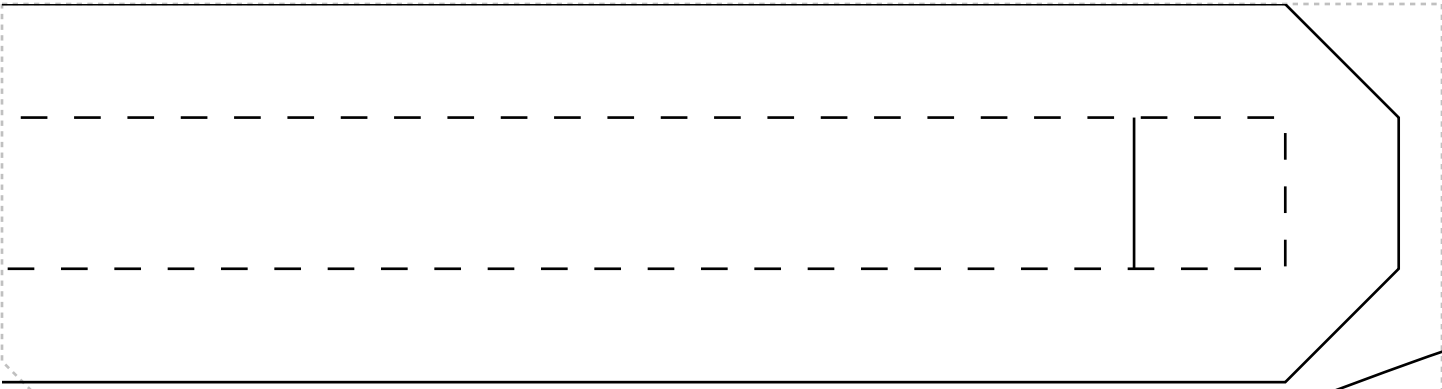
C1

A1

B1

THUNDERLION

B2



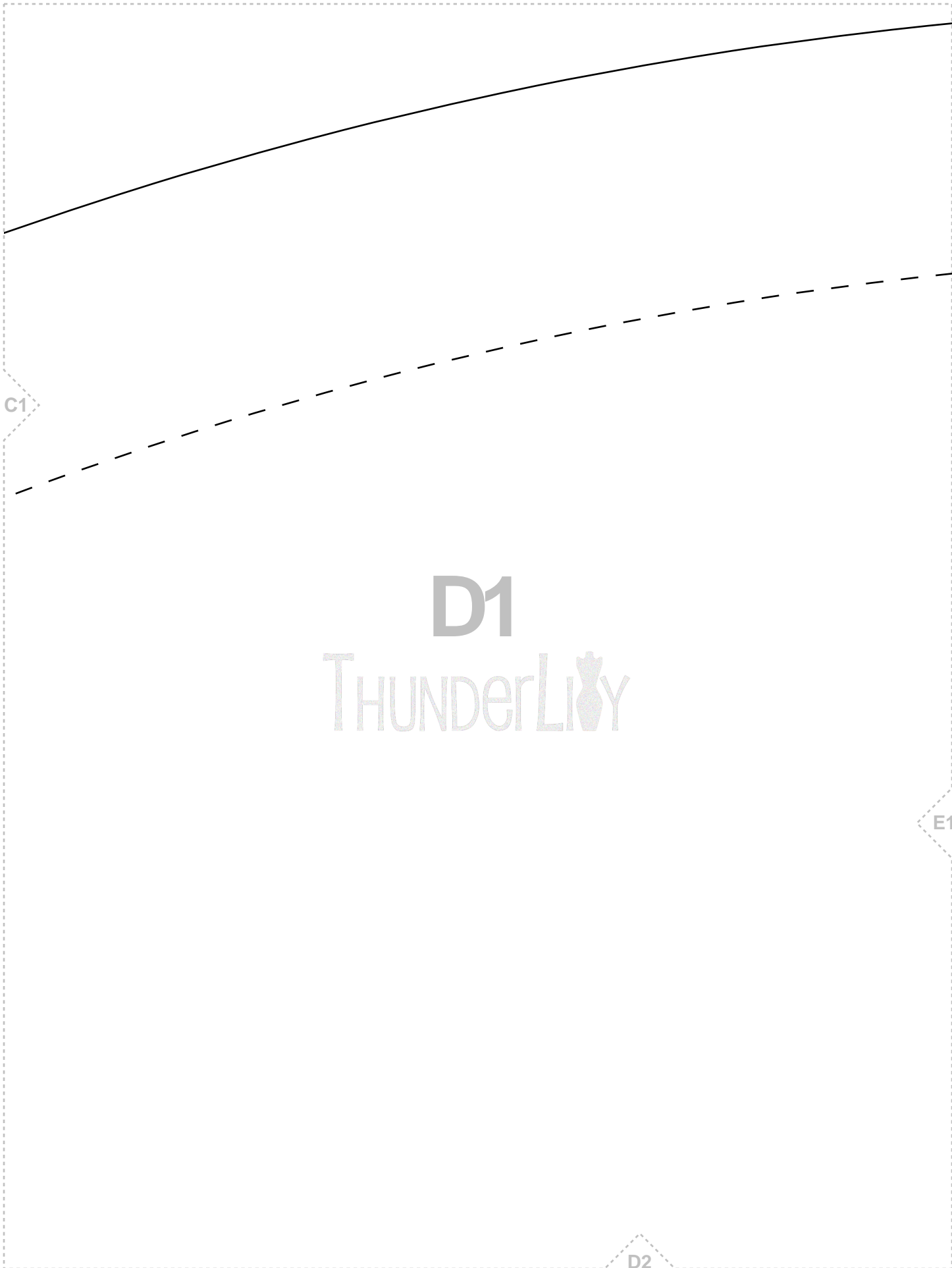
B1

D1

C1

THUNDERLIVY

C2



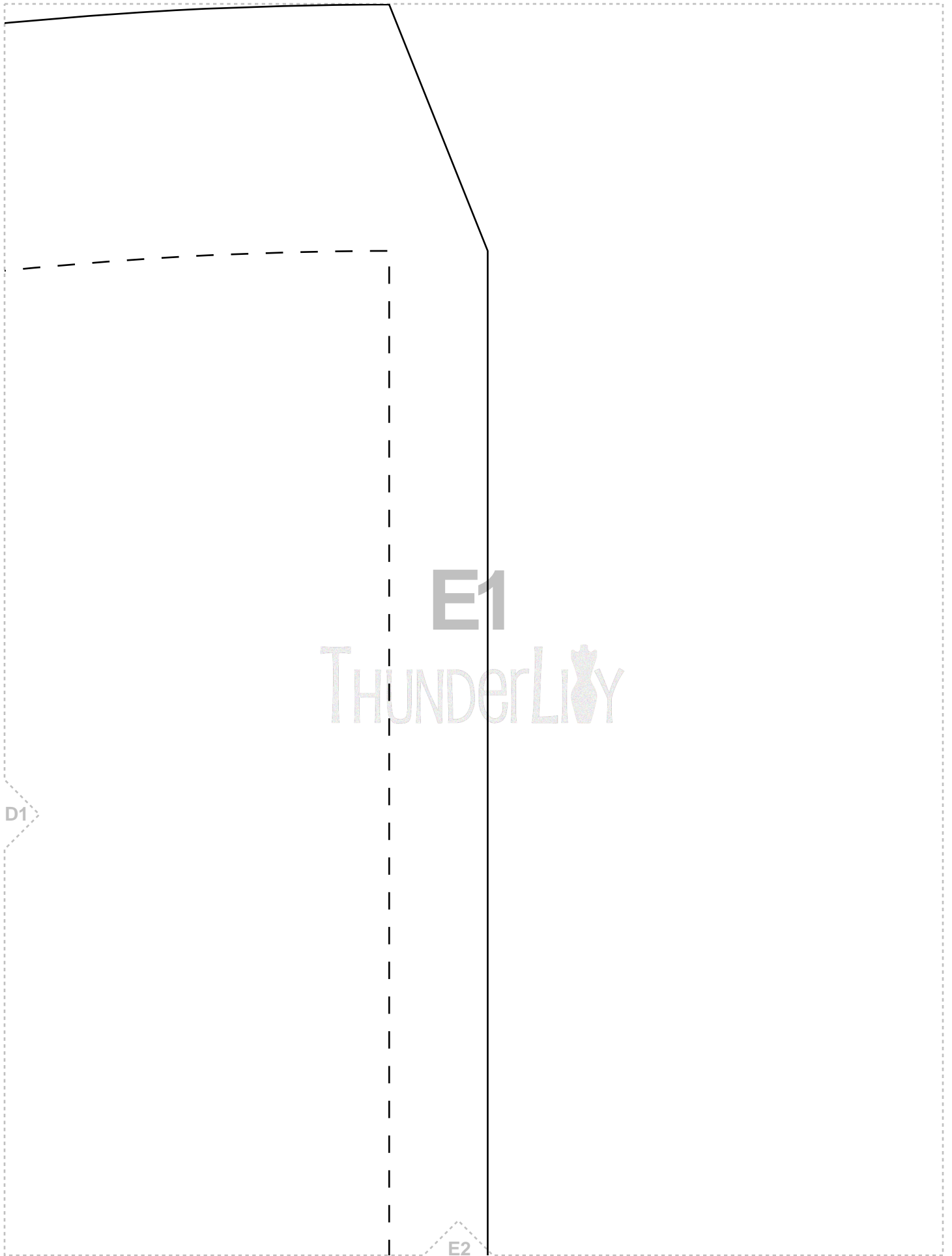
C1

D1

THUNDERLIQY

E1

D2



D1

E1

THUNDERLION

E2

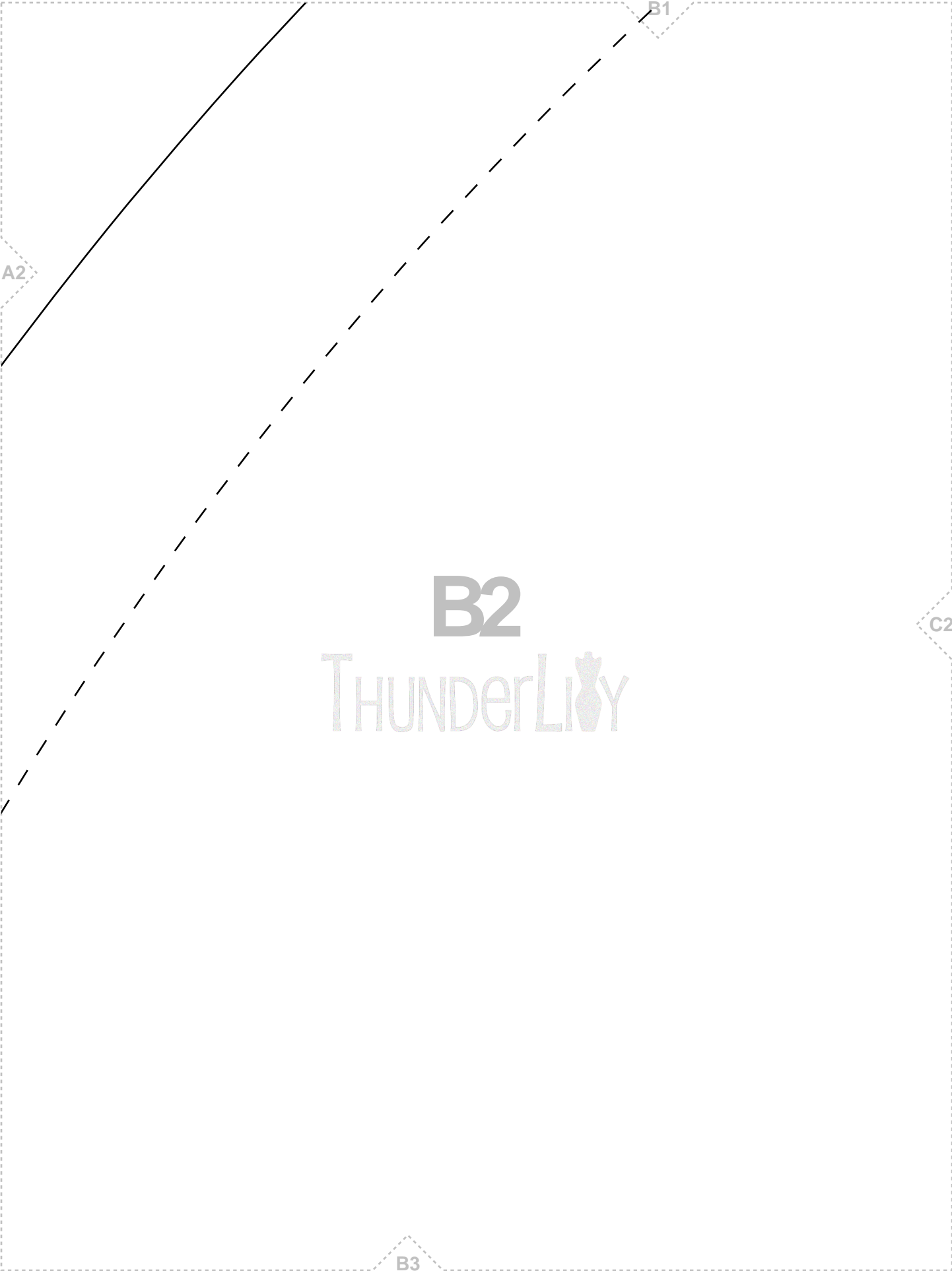
A1

B2

A2

THUNDERLIQY 

A3



A2

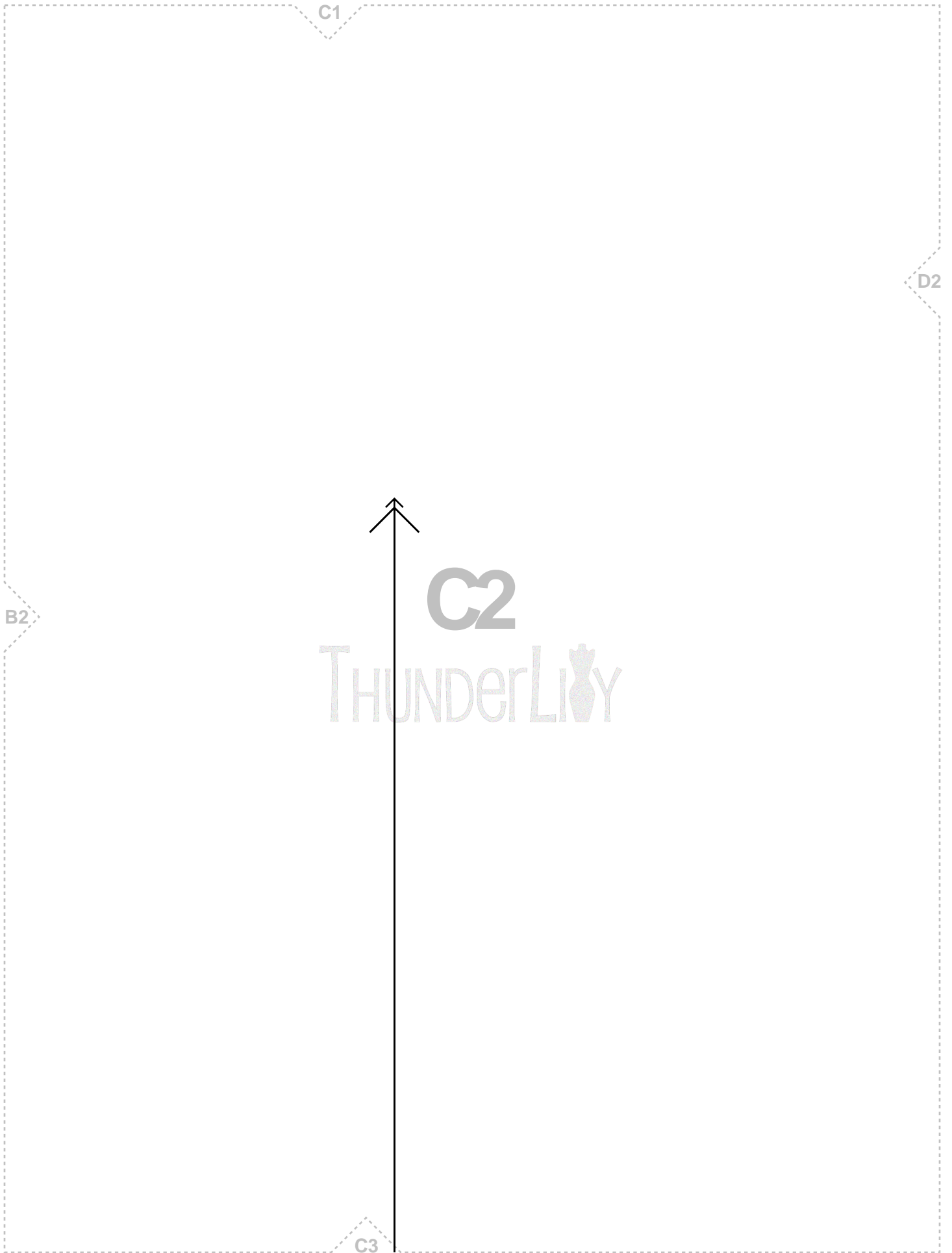
B1

B2

THUNDERLIQ

C2

B3



C1

D2

B2

C2

THUNDERLIQ

C3

D1

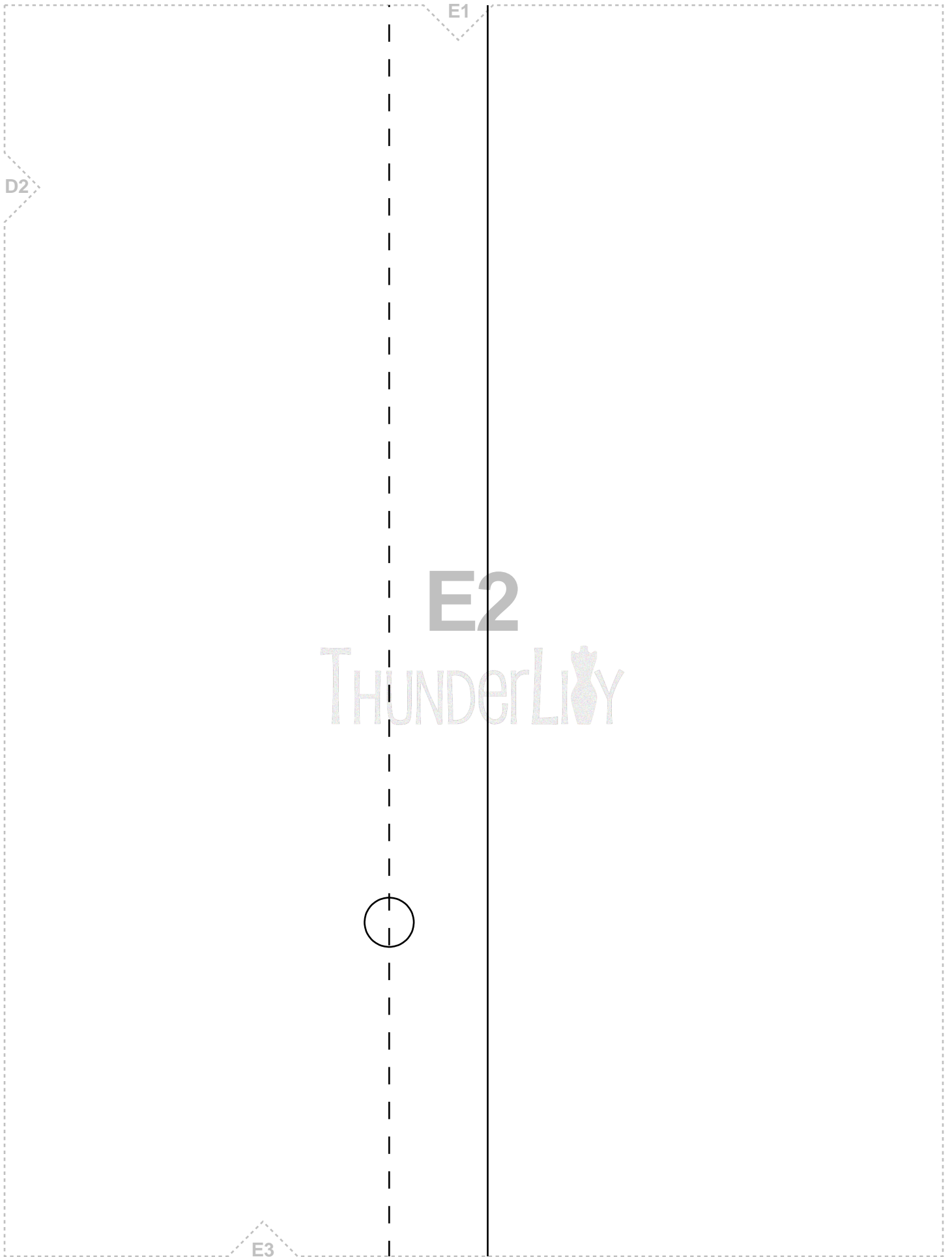
E2

C2

D2

THUNDERLION

D3



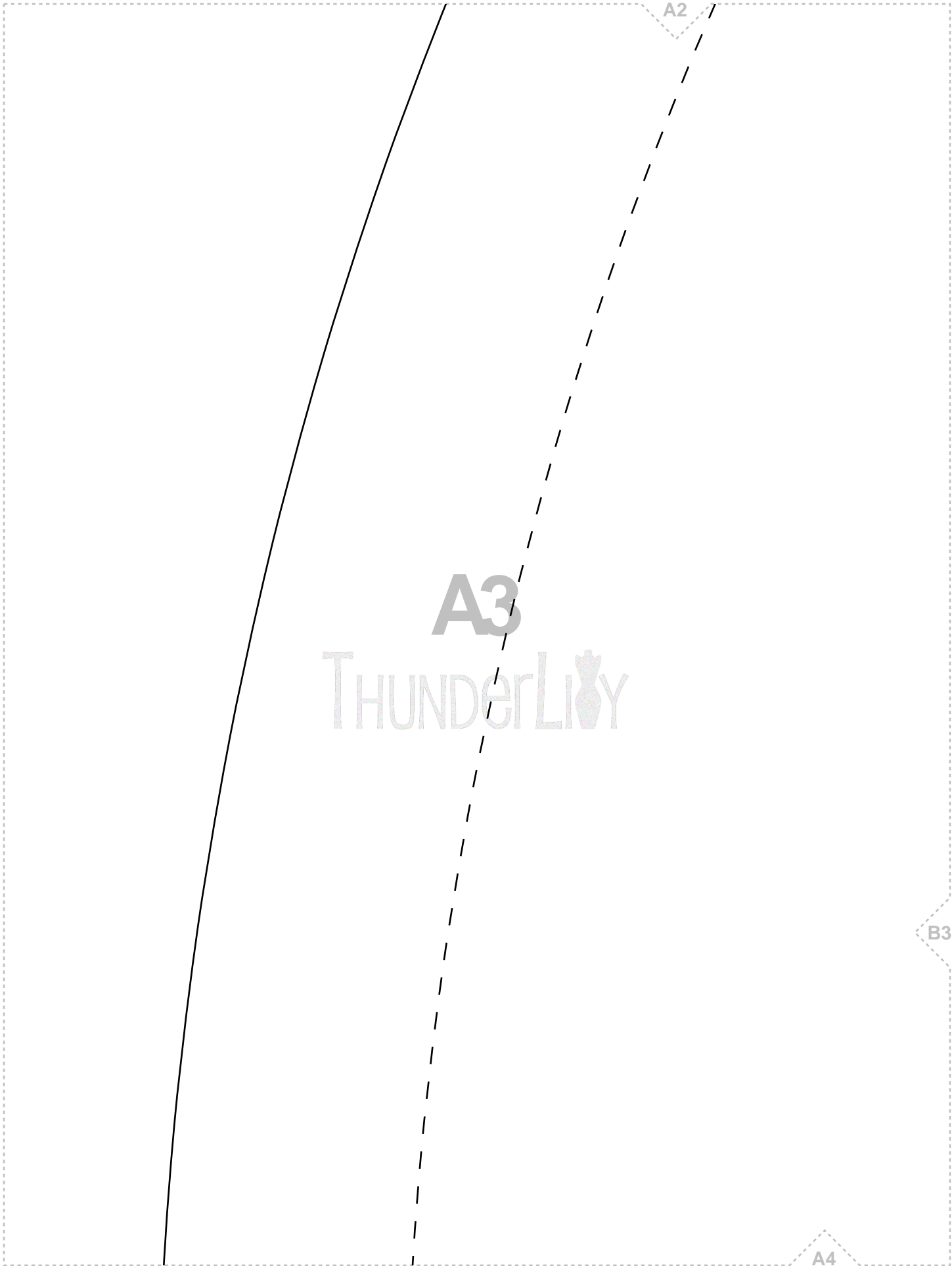
E1

D2

E2

THUNDERLION

E3



A2

A3

THUNDERLILY

B3

A4

B2

nd Back

B3

THUNDERLION

C3

A3

B4

Kit Front a
Cut 2 on fold

C2

B3

THUNDERLION

D3

C4

D2

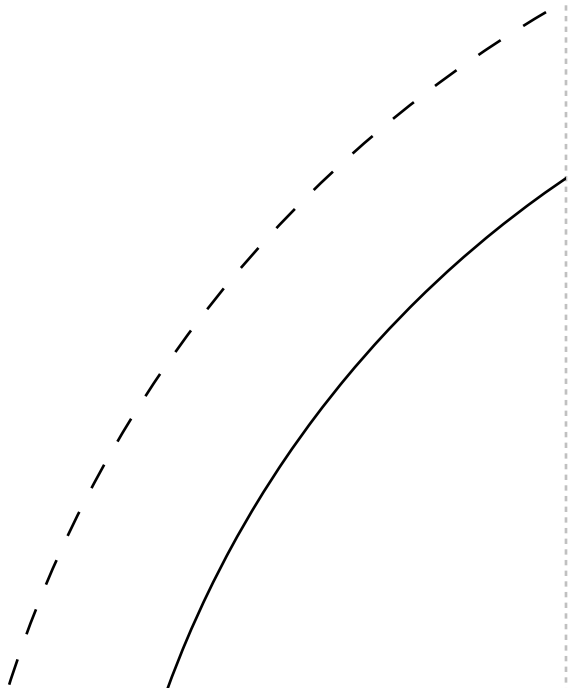
circle si

D3

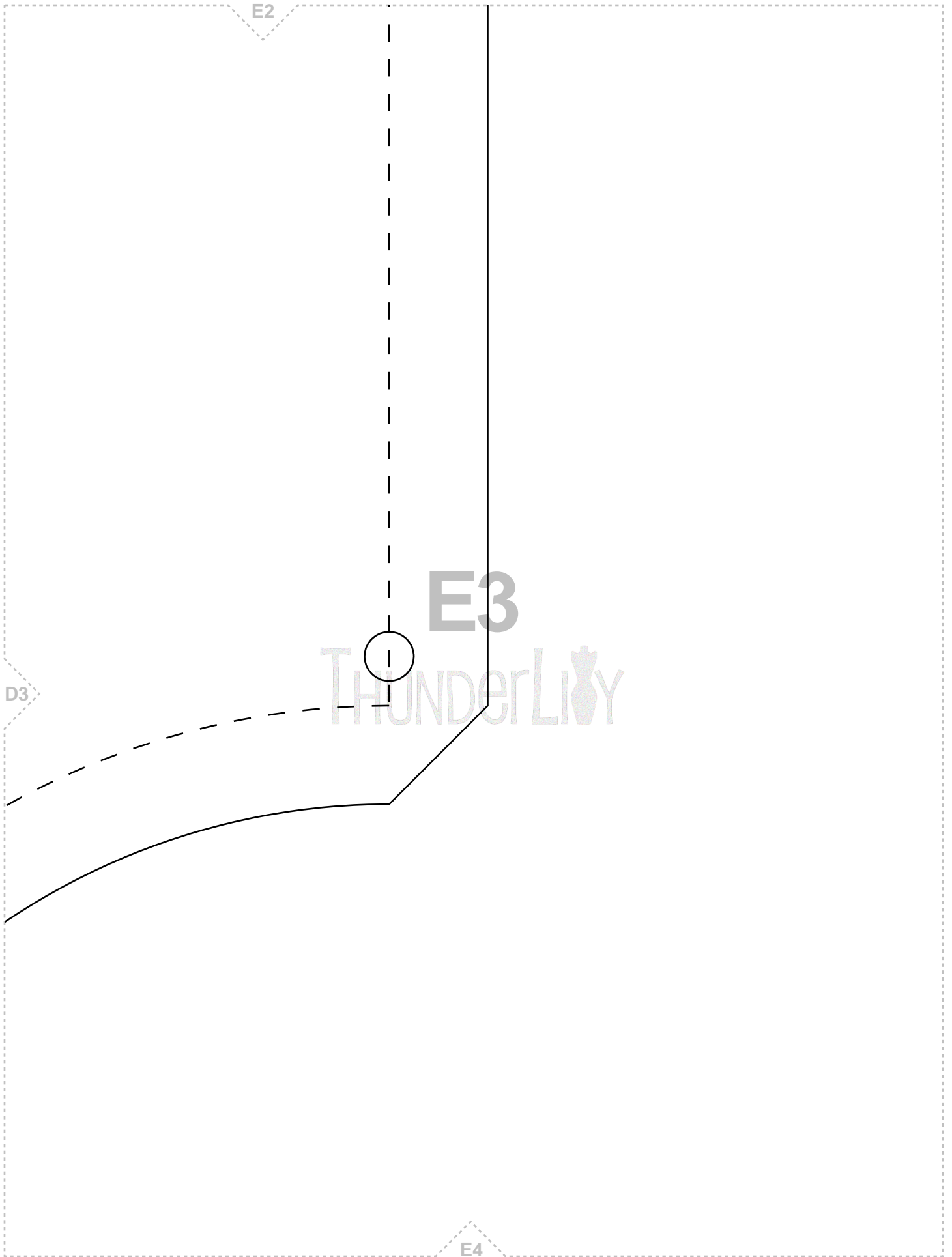
THUNDERLION

E3

C3



D4



E2

E3

D3

THUNDERLIQ

E4

A3

A4

THUNDERLION

B4

B3

line

B4

THUNDERLION

A4

C4

Fold

C3

D4

C4

THUNDERLION

B4

D3

C4

D4

THUNDERLION

E4

E3

E4

THUNDERLIQY 

D4