



# BowNeck Sleeveless Blouse

---

## **Bowneck Sleeveless Blouse**

Pass the champagne and slink on down through this summer of Boho Chic. A sassy bow at the neck let's everyone know that you are a leader not a follower and do not cave in to casual necking.

This is the year when we cast our memories back to the hazy summer days of the 70's. Unearthing and breathing fresh life into the beloved era of big hair, free flowing dresses and flowers in our hair—it is the year of boho chic.

## **Pattern information**

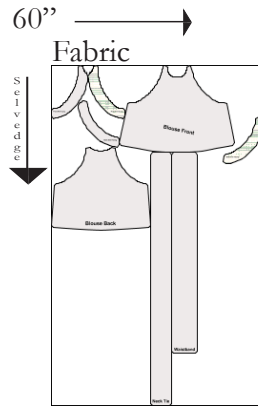
Suggested fabrics: Ideal for lightweight fabrics, chiffons, organzas, cheesecloth, silk charmeuse or soft drapey fabrics.

This pattern is created for You

[info@thunderlily.com](mailto:info@thunderlily.com)



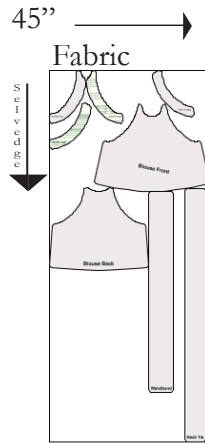
### Fabric cutting layout



### Fabric requirements

60" 2 3/4yd.

45" 3yd.

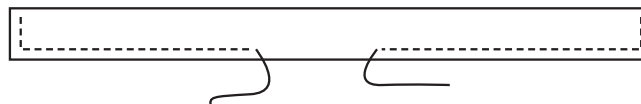


### Sewing Instructions

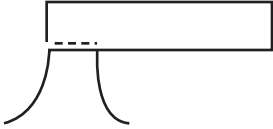
1. Stitch Front and Back sections together at sides, leaving open on right side below large circle. Press flat. Handroll open edges below large circle on right side, using a slip stitch to finish.
2. Put a small holding stitch to keep front and back sections together at neck.
3. With right sides together sew Armhole Facings to armhole edges, matching small circles. Fold in seam allowance on facings and edge stitch. Fold facings to inside of blouse and press into place. Use a hand-stitch on the shoulder and under armhole to keep facing in place.

### Tie

4. Fold Tie section along fold line so right sides are together. Sew leaving open between small circles.

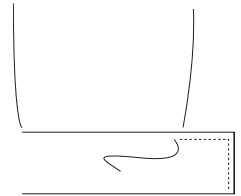


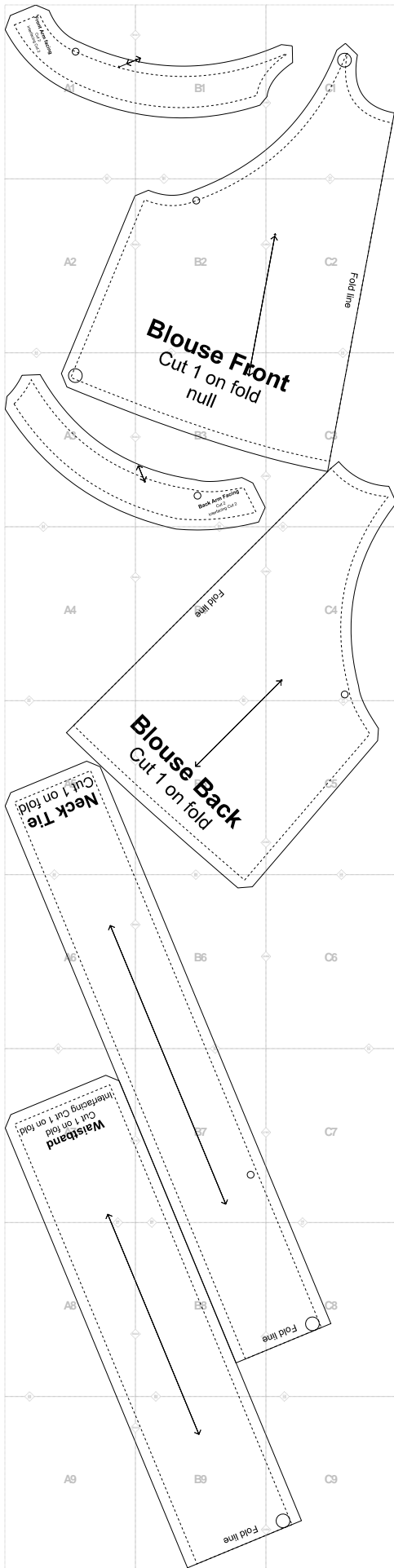
- Pin Tie to Front and Back Blouse sections by matching large circle on tie to large circle on blouse front. left side. Pin tie around front section. Pin Tie around back neck section. Sew in place, leaving neck open at right side. Hand sew inside hem of Tie to inside of neck to close all open edges.

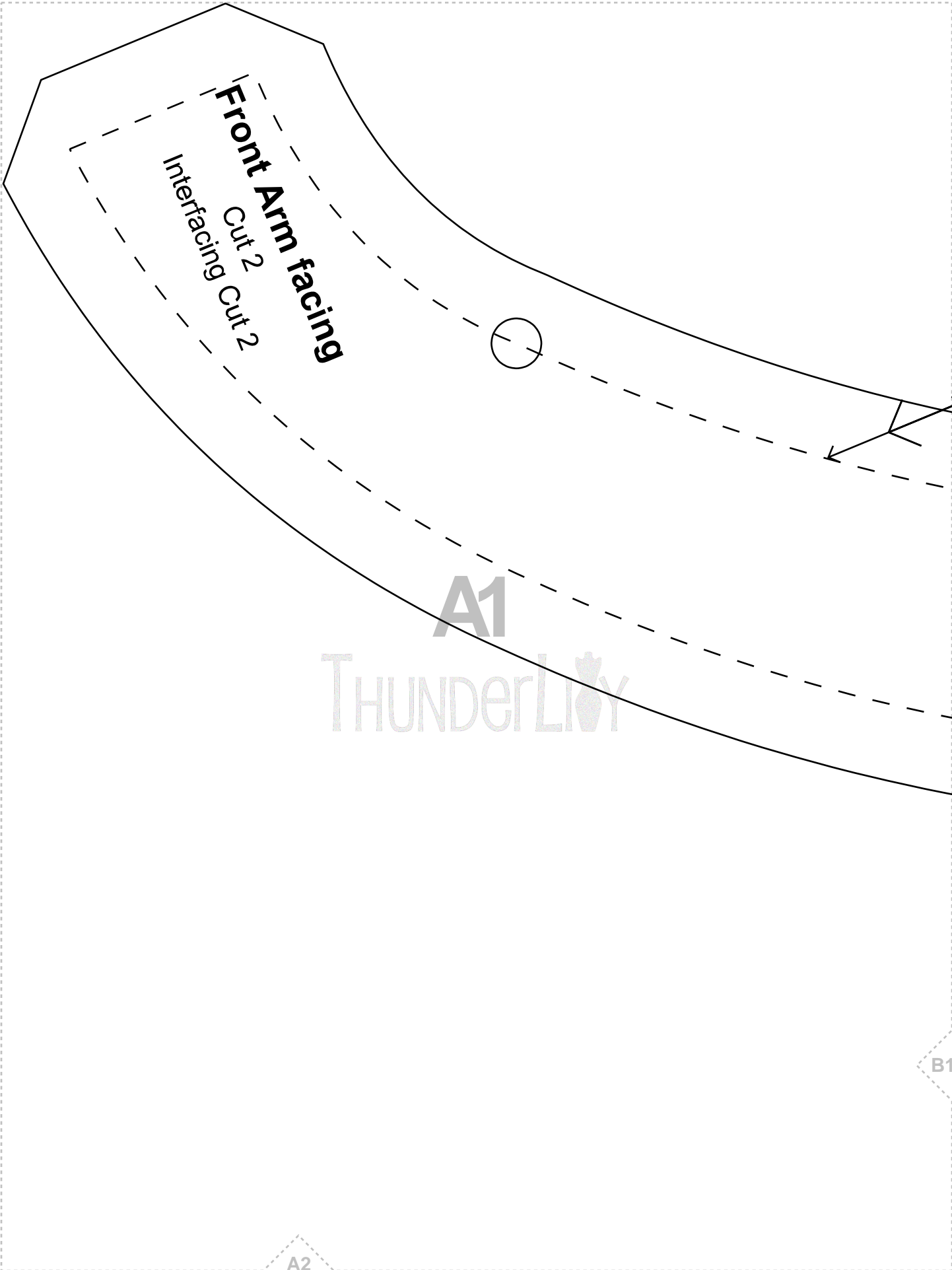


### Waistband

- Attach interfacing to wrong side of Waistband. Starting at Back right edge, pin right side of Waistband, to right side of blouse. Sew. Press.
- Fold Waistband along center fold, with right sides together. Sew open ends of overlap. Trim corners and turn right sides out.
- Fold Waistband towards inside of blouse along fold line and press. Fold under seam allowance of waistband. Hand stitch on inside of blouse.
- Sew buttonhole and attach button to fit.







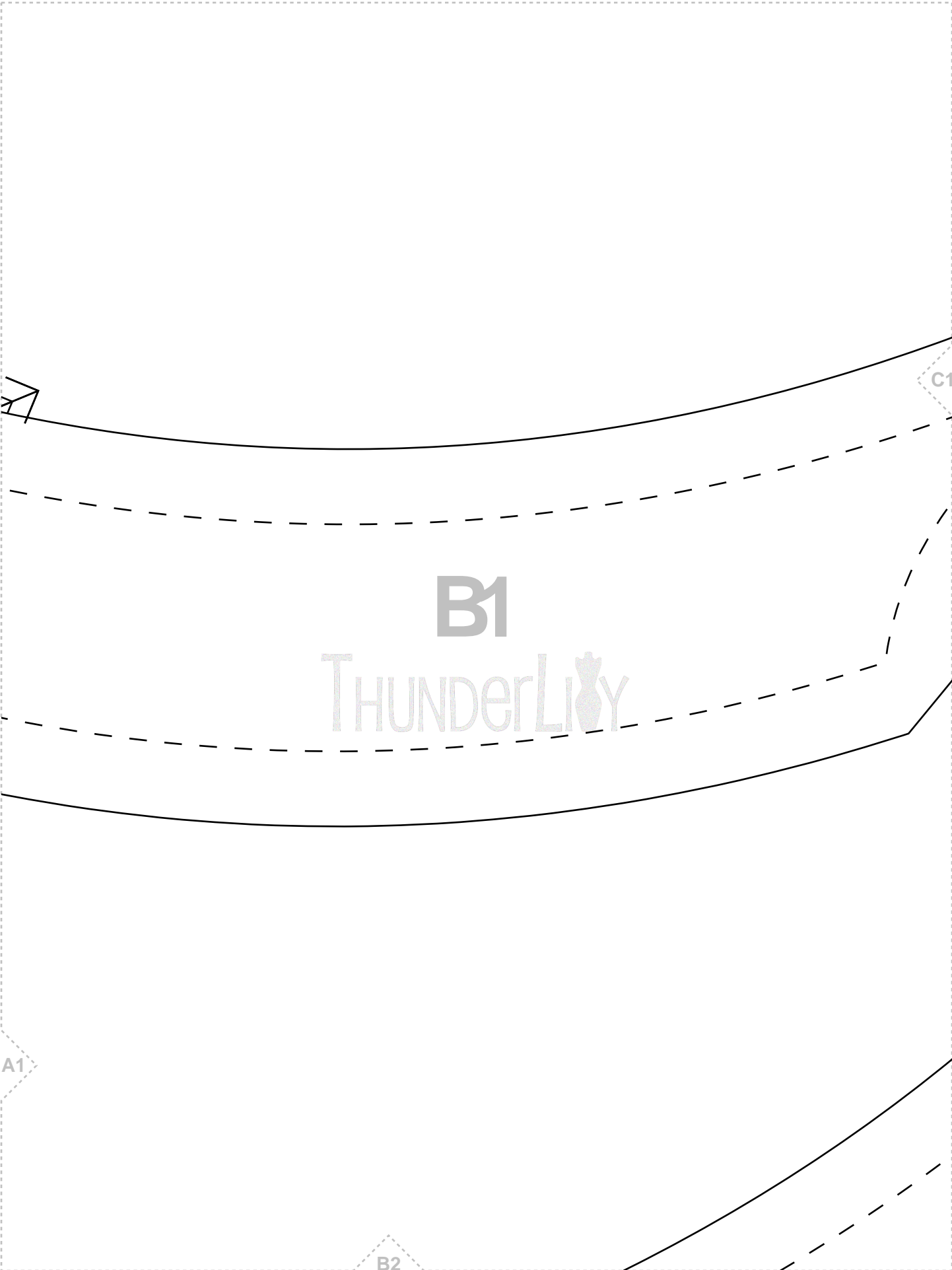
**Front Arm facing**  
Cut 2  
Interfacing Cut 2

A1

THUNDERLily

B1

A2



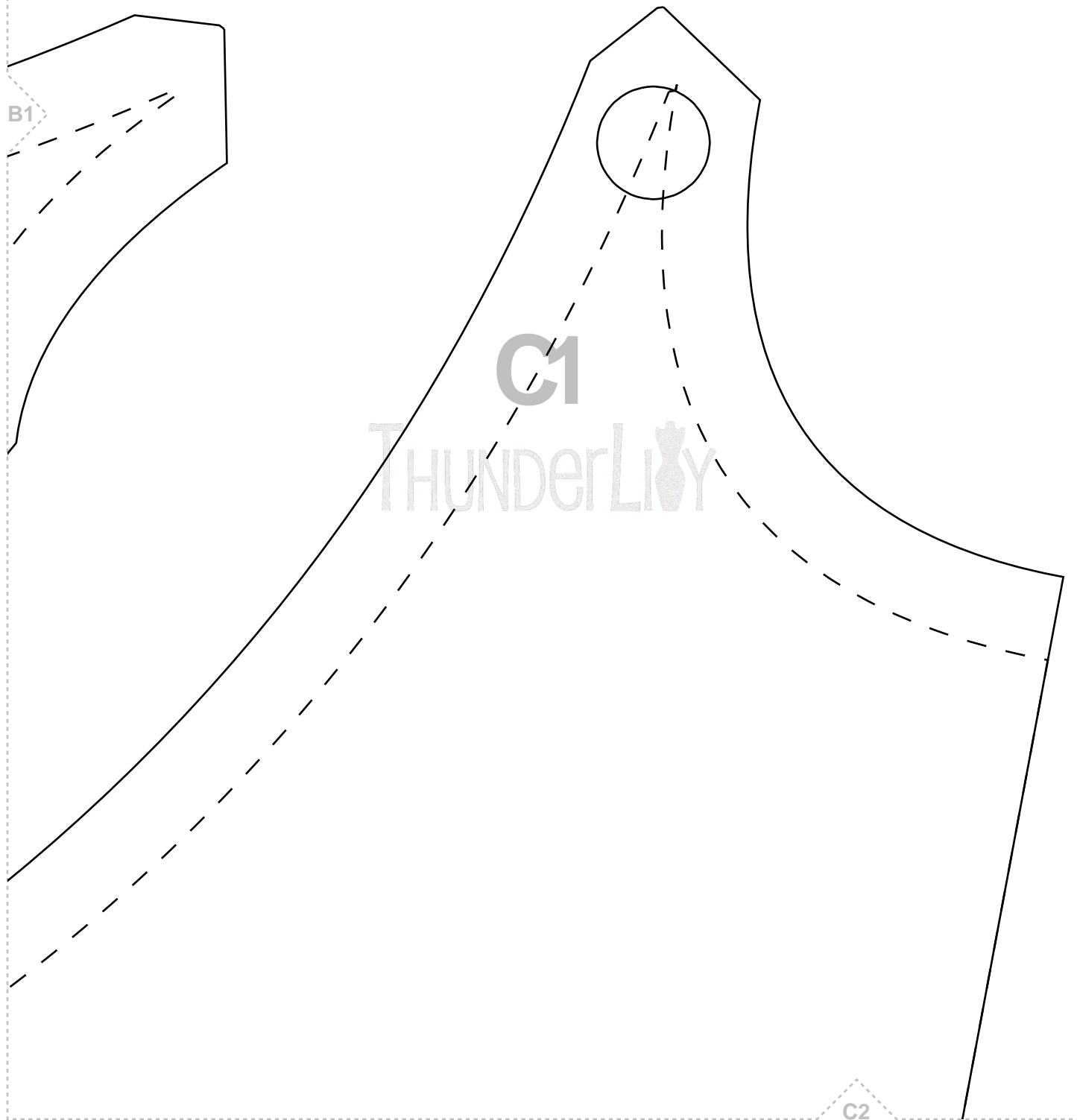
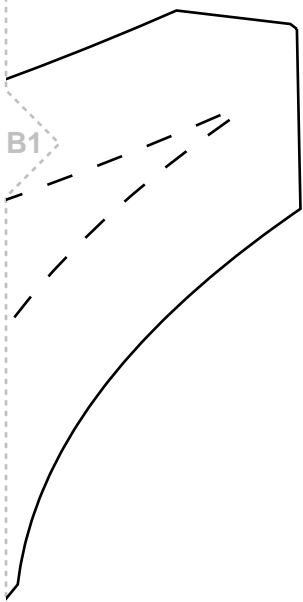
C1

**B1**

THUNDERLIDY

A1

B2



C2

A1

A2

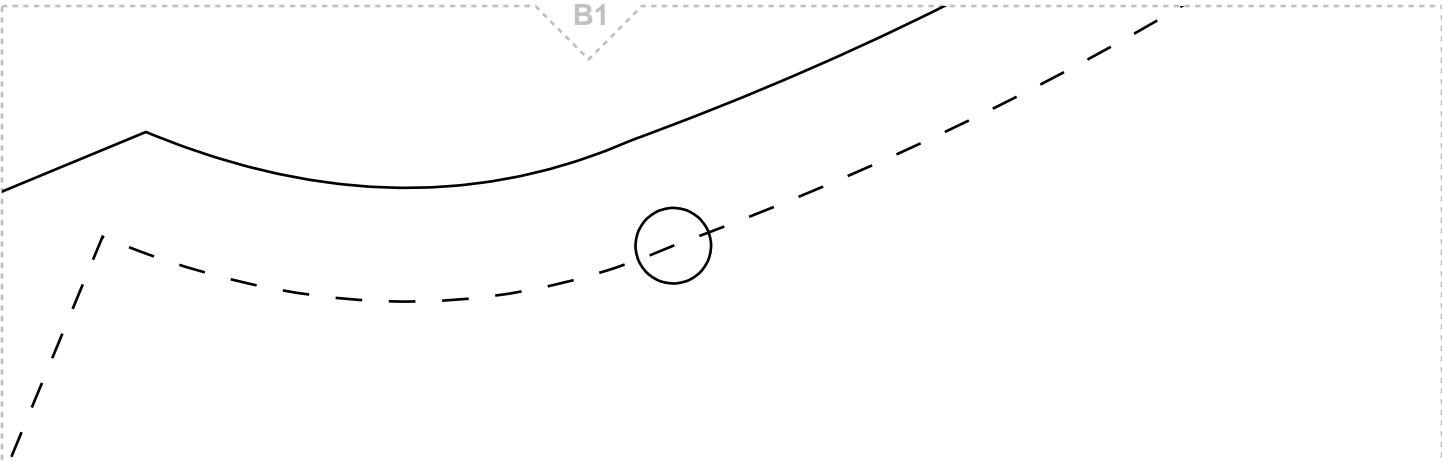
THUNDERLIQY 

B2

A3



B1



B2

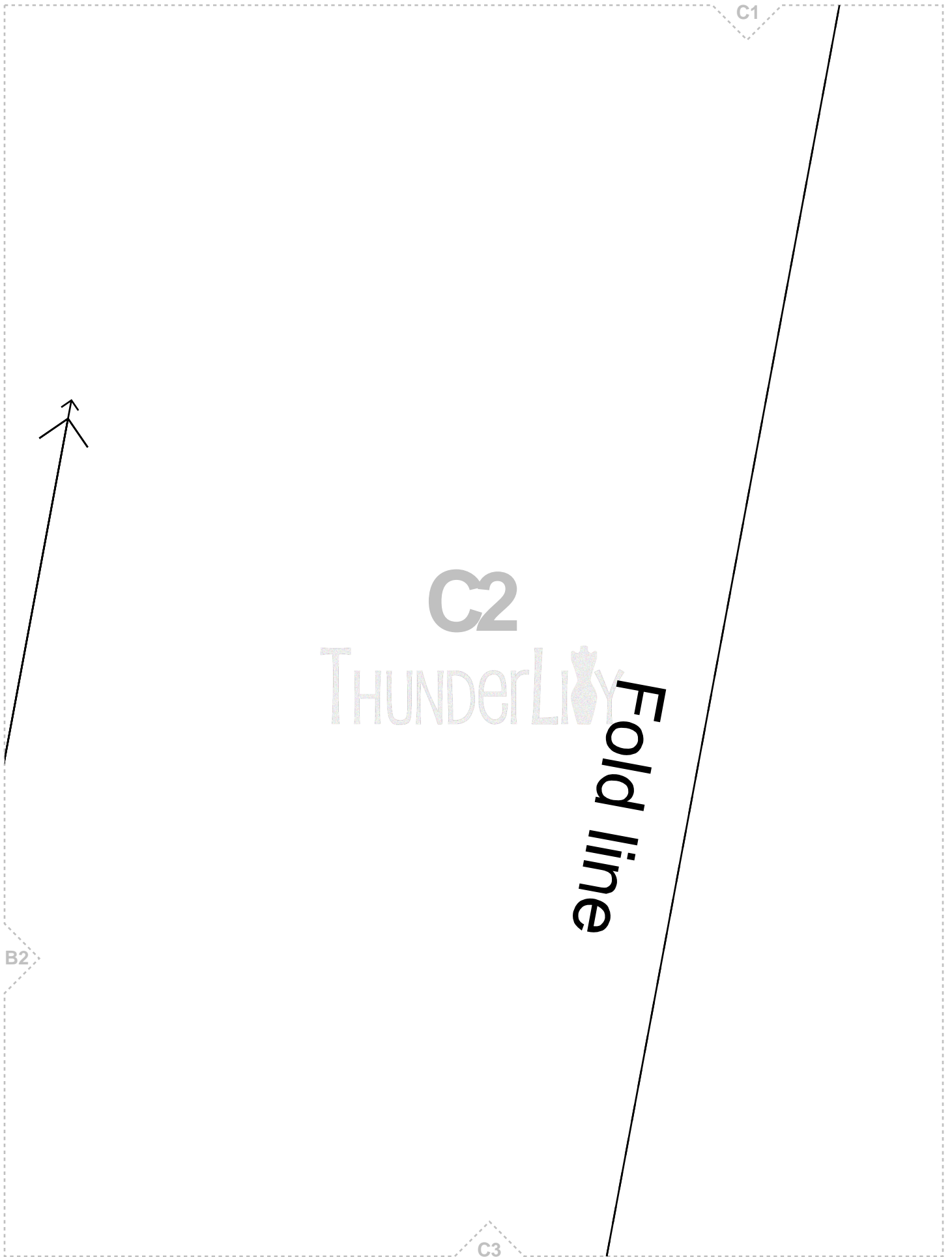
THUNDERLION

A2

C2

**Blouse**

B3



C1

C2

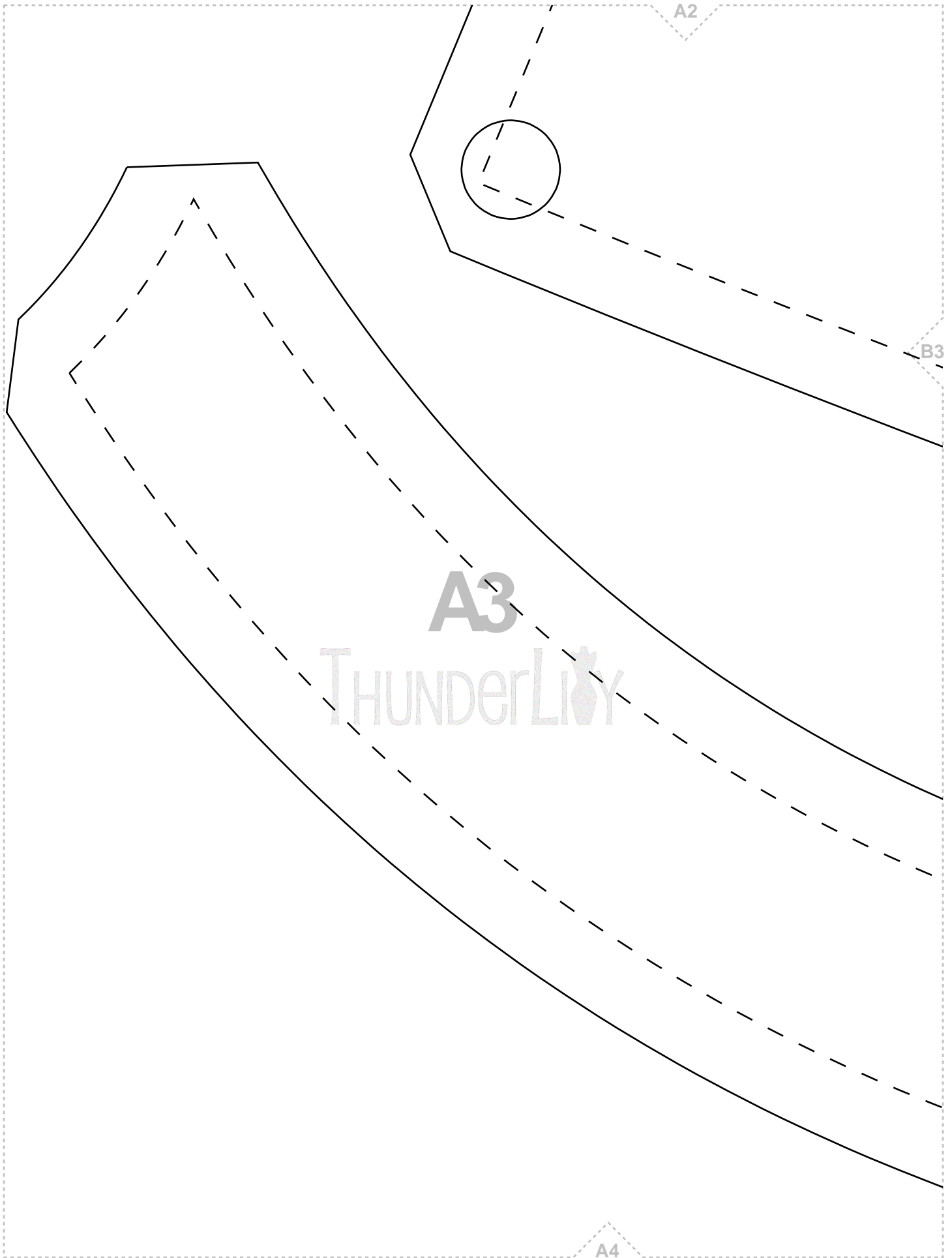
THUNDERLily

Fold line

B2

C3





A2

B3

A3

THUNDERLIVY

A4

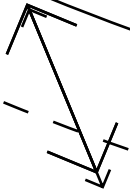
B2

Use Fro  
Cut 1 on fold  
null

A3

B3

THUNDERLIVY



Back Arm Facing

Cut 2  
Interfacing Cut 2

B4

C2

B  
**nt**

C3

THUNDERLION

C4

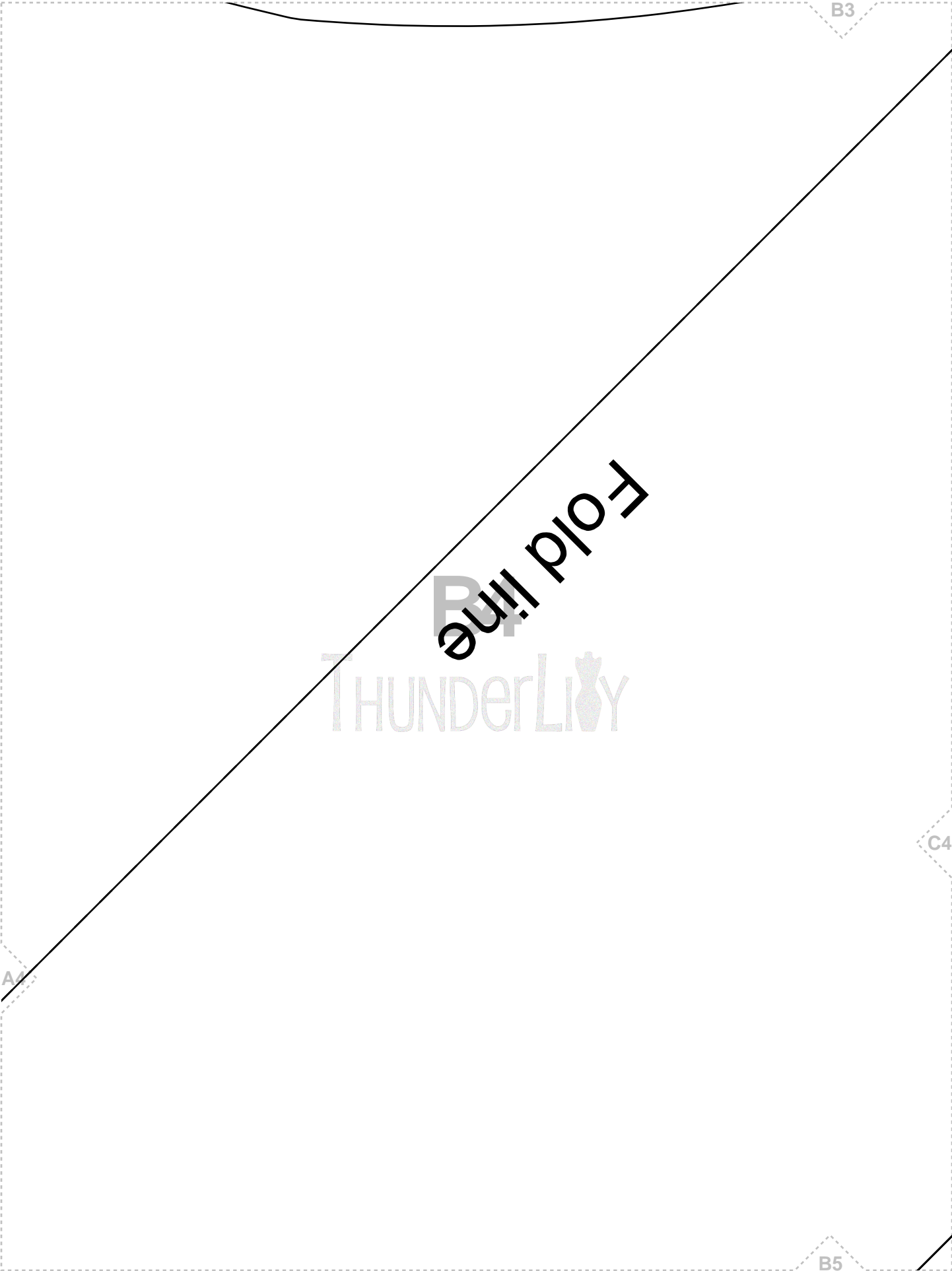
A3

# A4

## THUNDERLIQY

B4

A5



B3

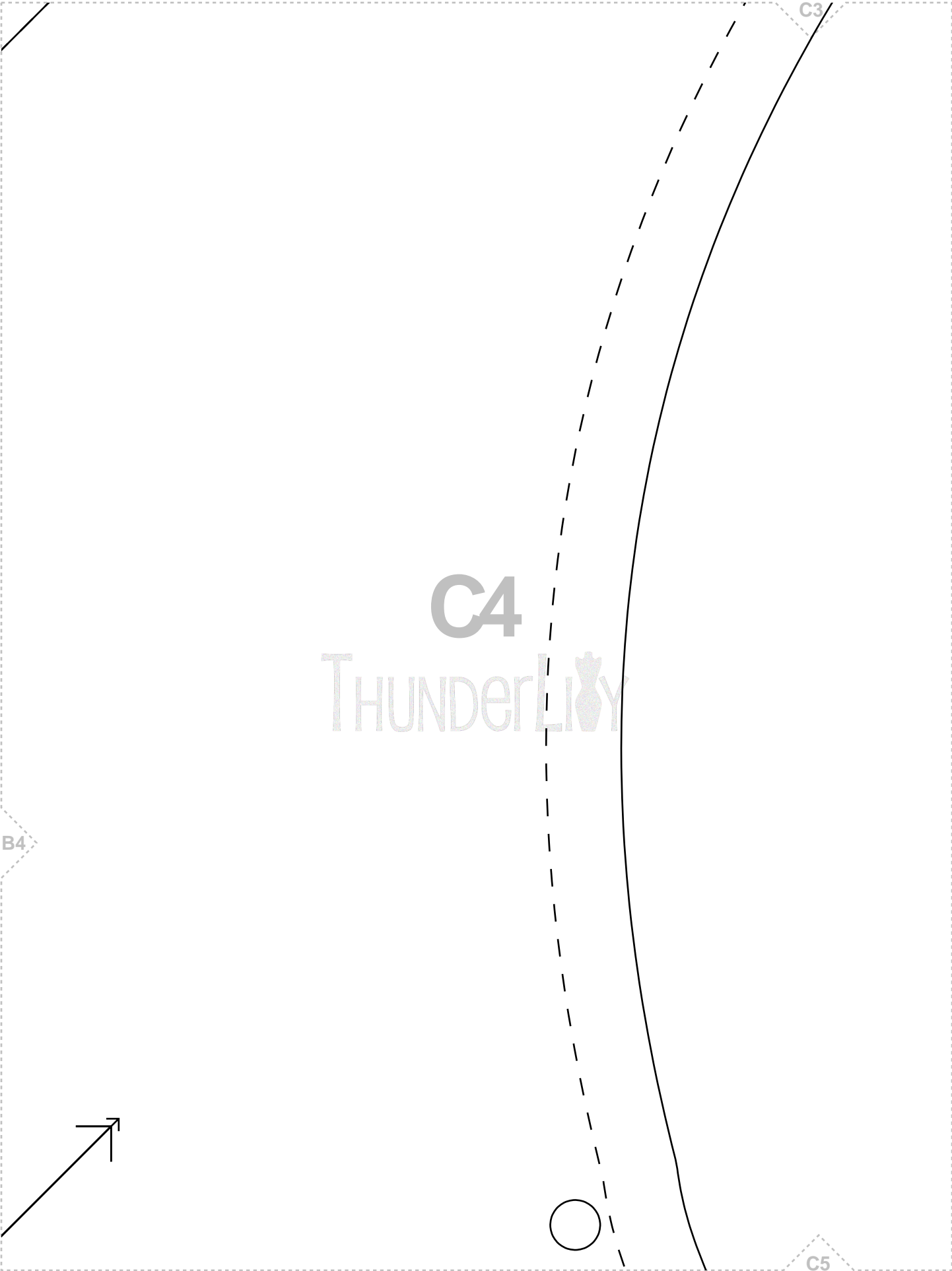
Fold line

THUNDERLILY

C4

A4

B5



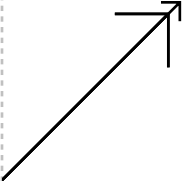
C3

C4

THUNDERLION

B4

C5





A4

Neck Tie  
Cut 1 on fold

A5

ThunderLink

B5

A6

**Blouses  
1 The  
on e  
fold  
Back**

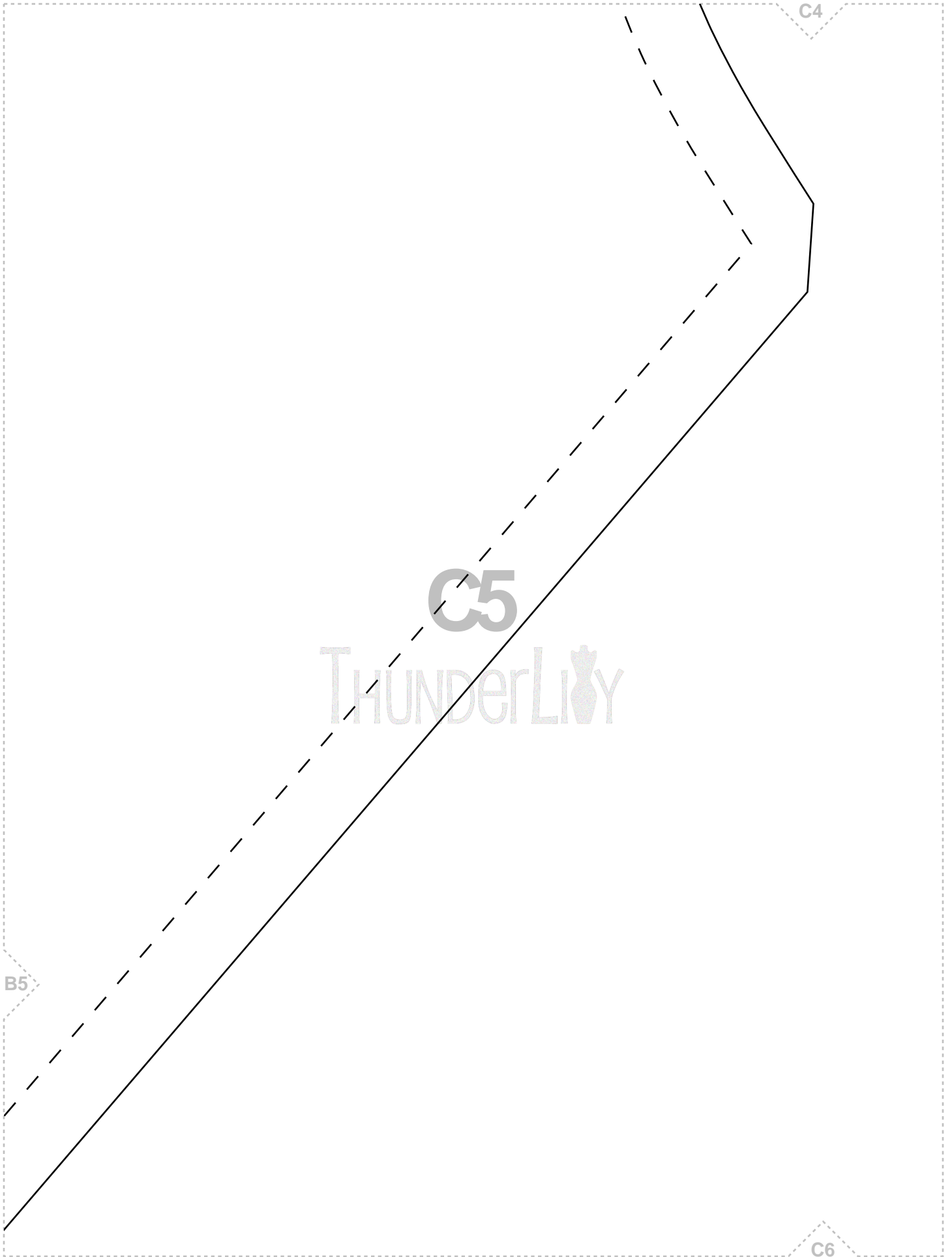
B4

C5

A5

B6

THUNDORAY



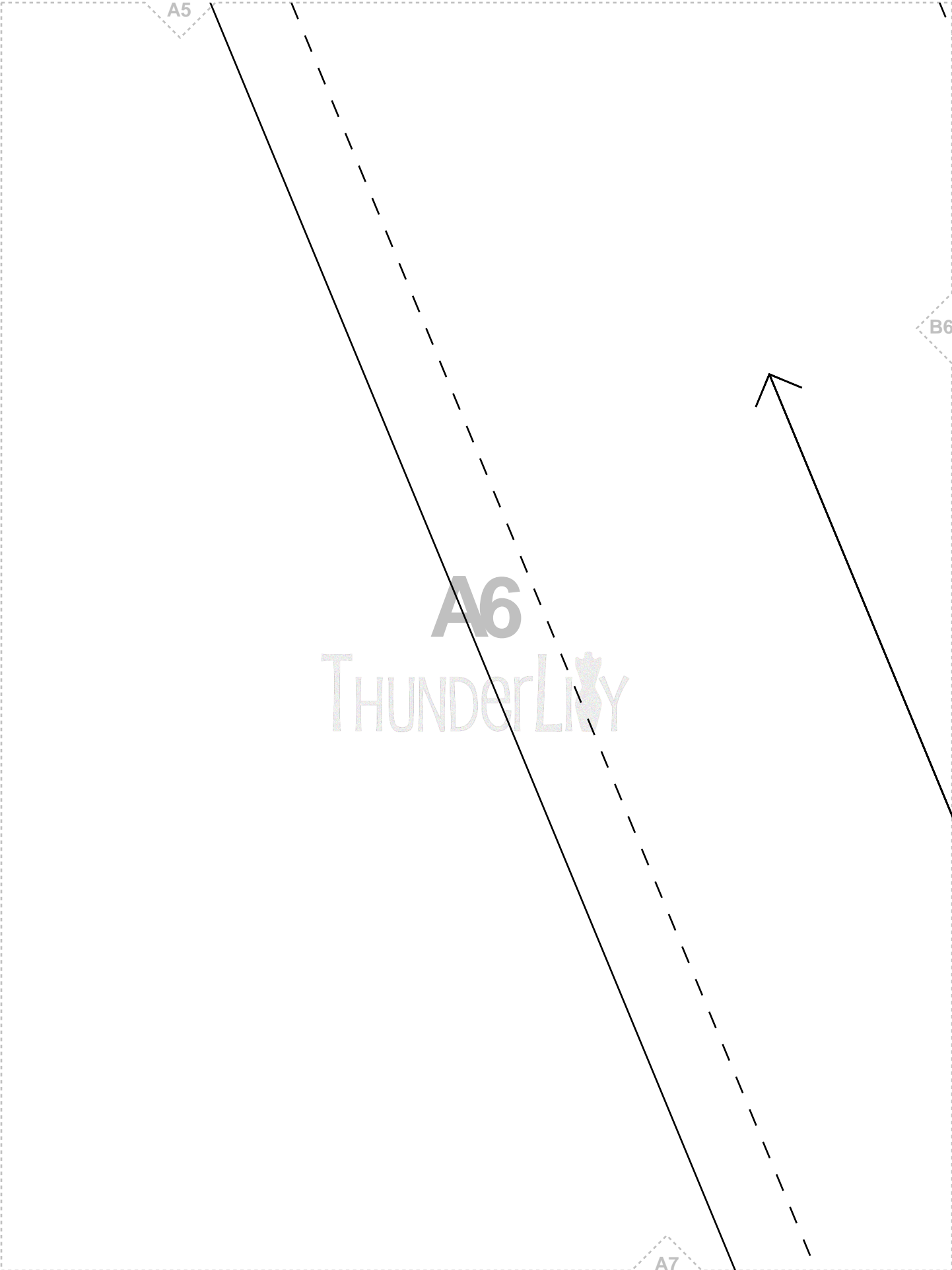
C4

C5

THUNDERLIQ

B5

C6



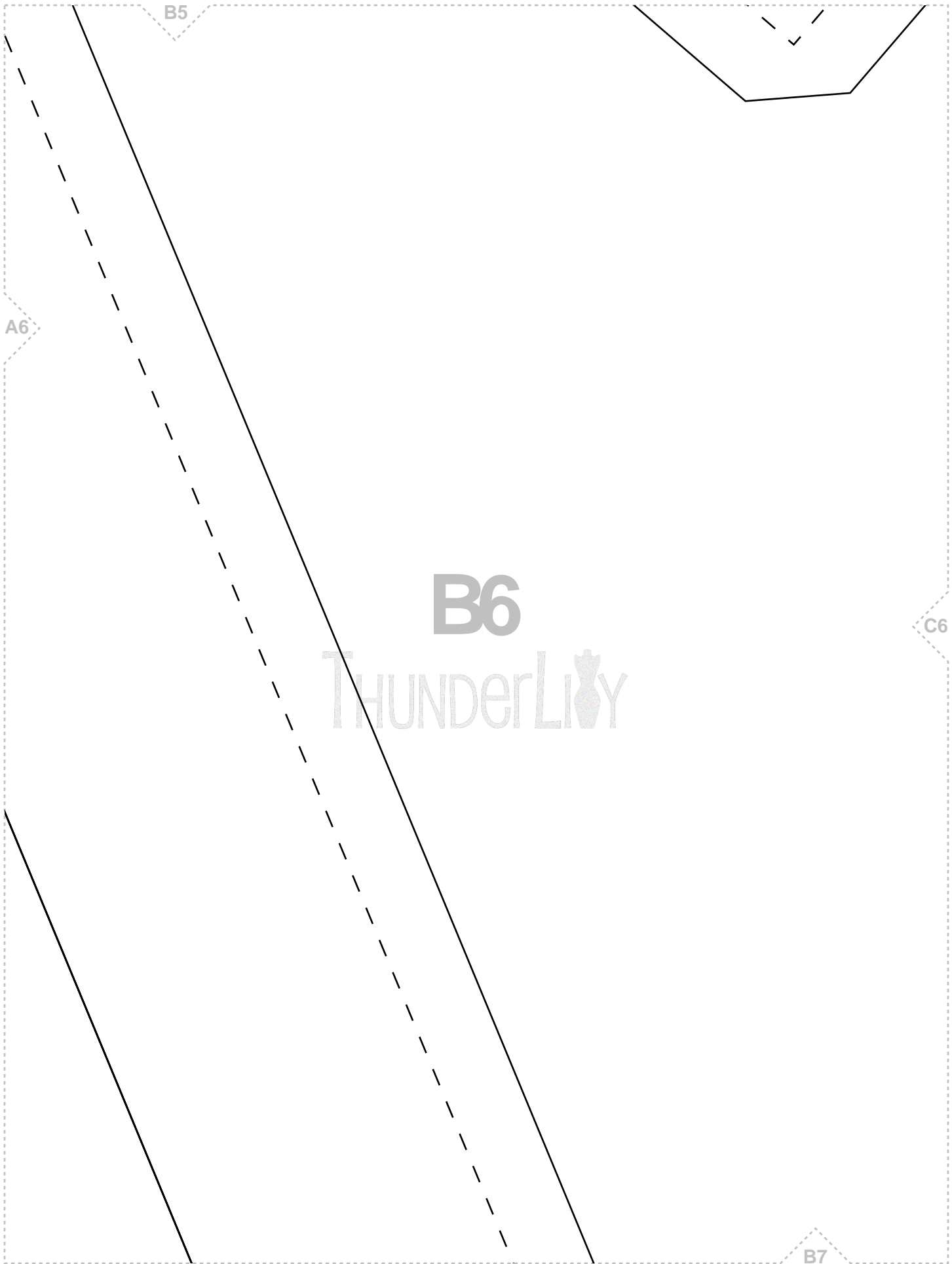
A5

B6

A6

THUNDERLION

A7



B5

A6

B6

THUNDERLIY

C6

B7

C5

B6

**C6**  
THUNDERLIY 

C7

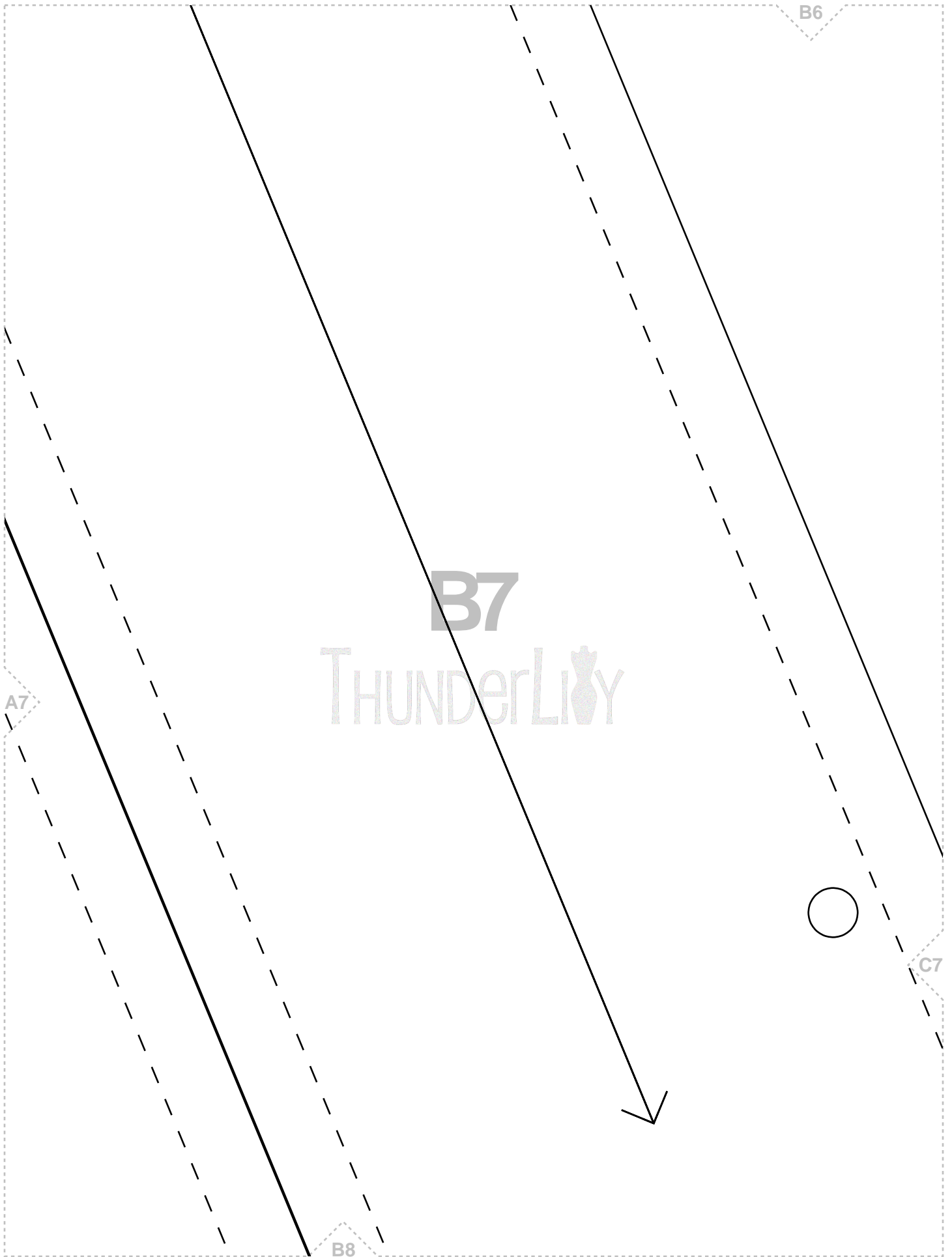
A6

**Waistband**  
Cut 1 on fold  
Interfacing Cut 1 on fold

B7

A8





B6

A7

B7

THUNDERLION

B8

C7



C6

# C7

## THUNDERLIY

B7

C8

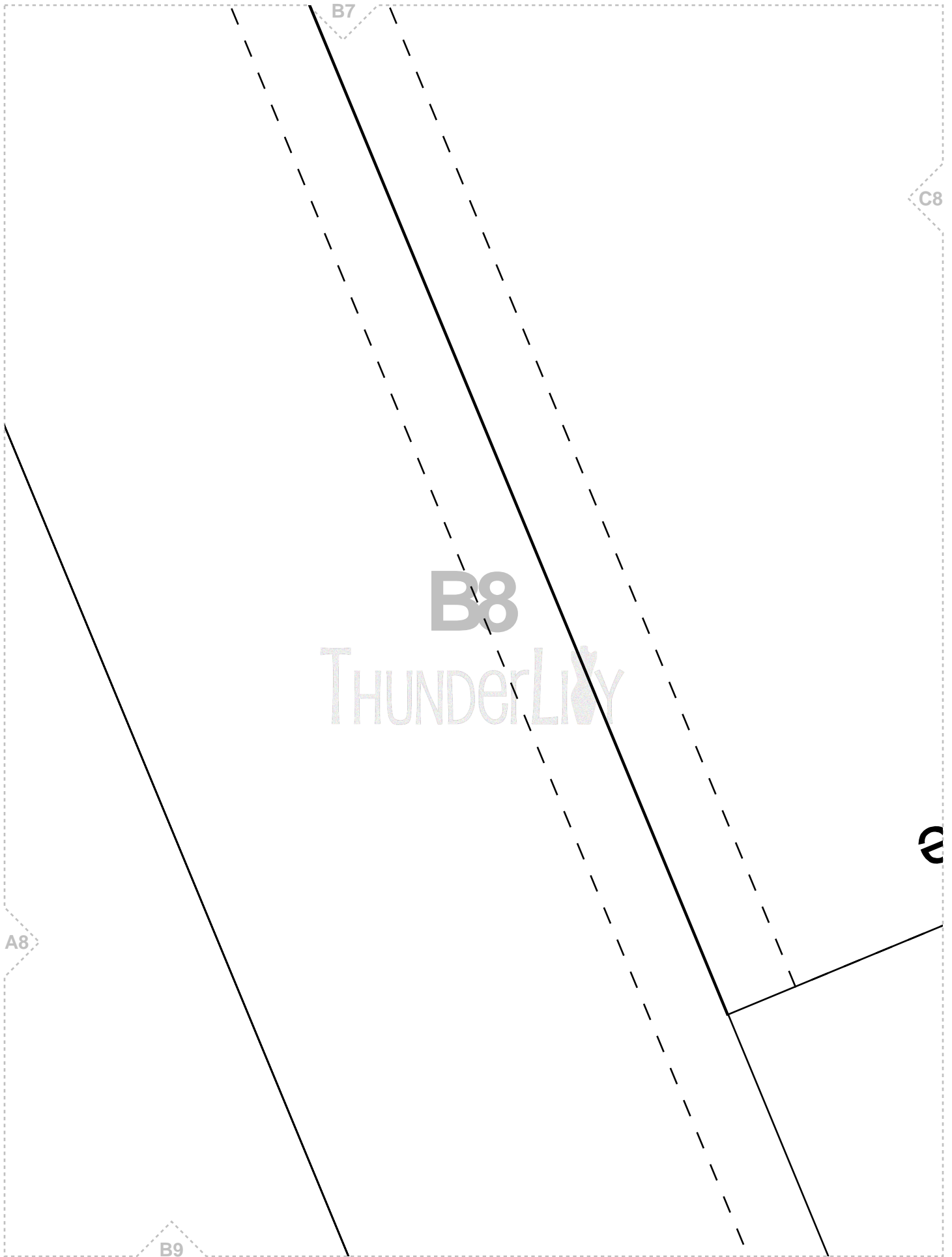
A7

A8

THUNDERLNY

B8

A9



B7

C8

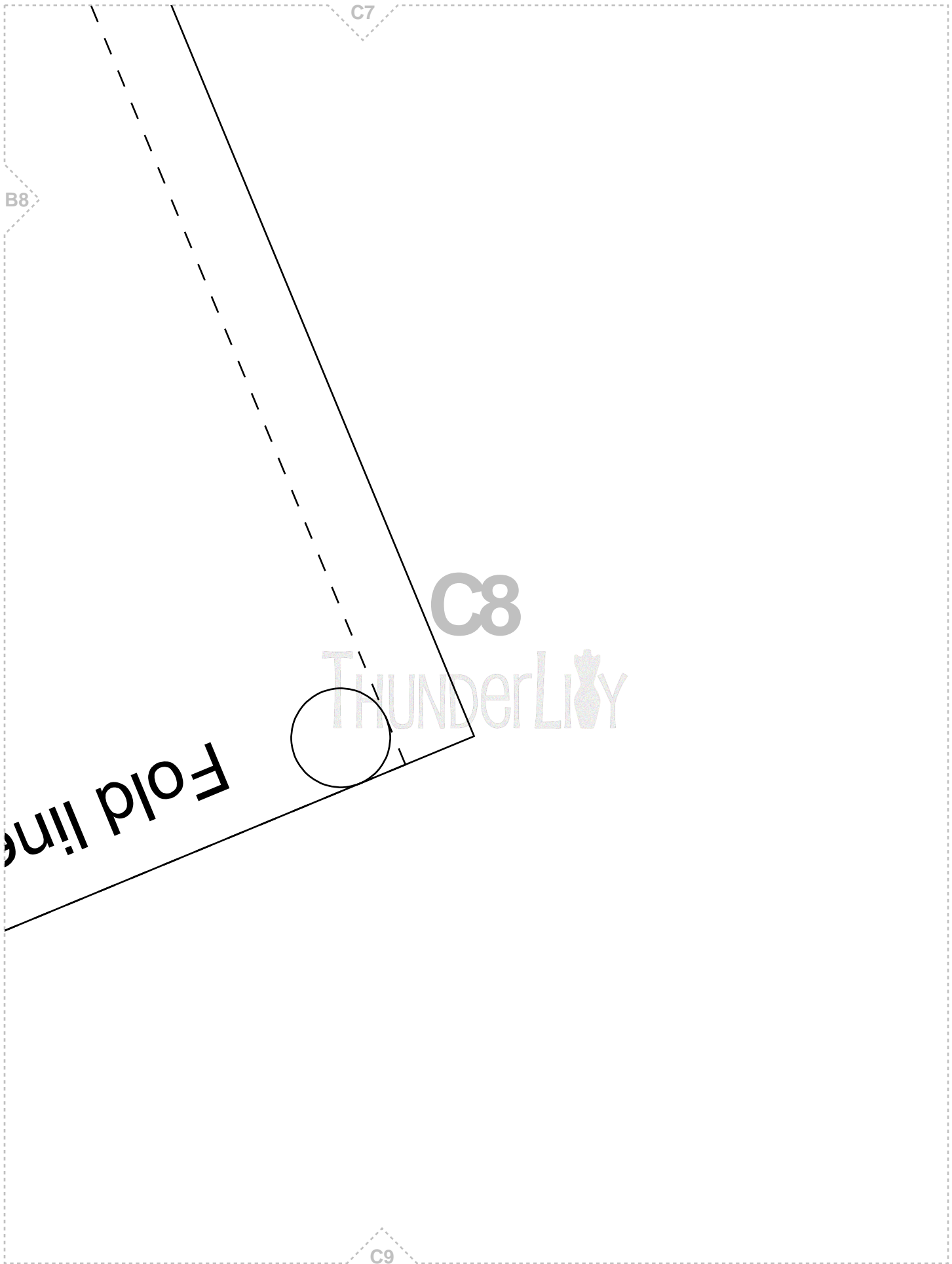
B8

THUNDERLIVY

A8

B9

B9



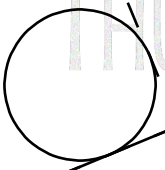
B8

C7

C8

ThunderLily

Fold line



1

C9

A8

B9

**A9**  
THUNDERLIY 

B8

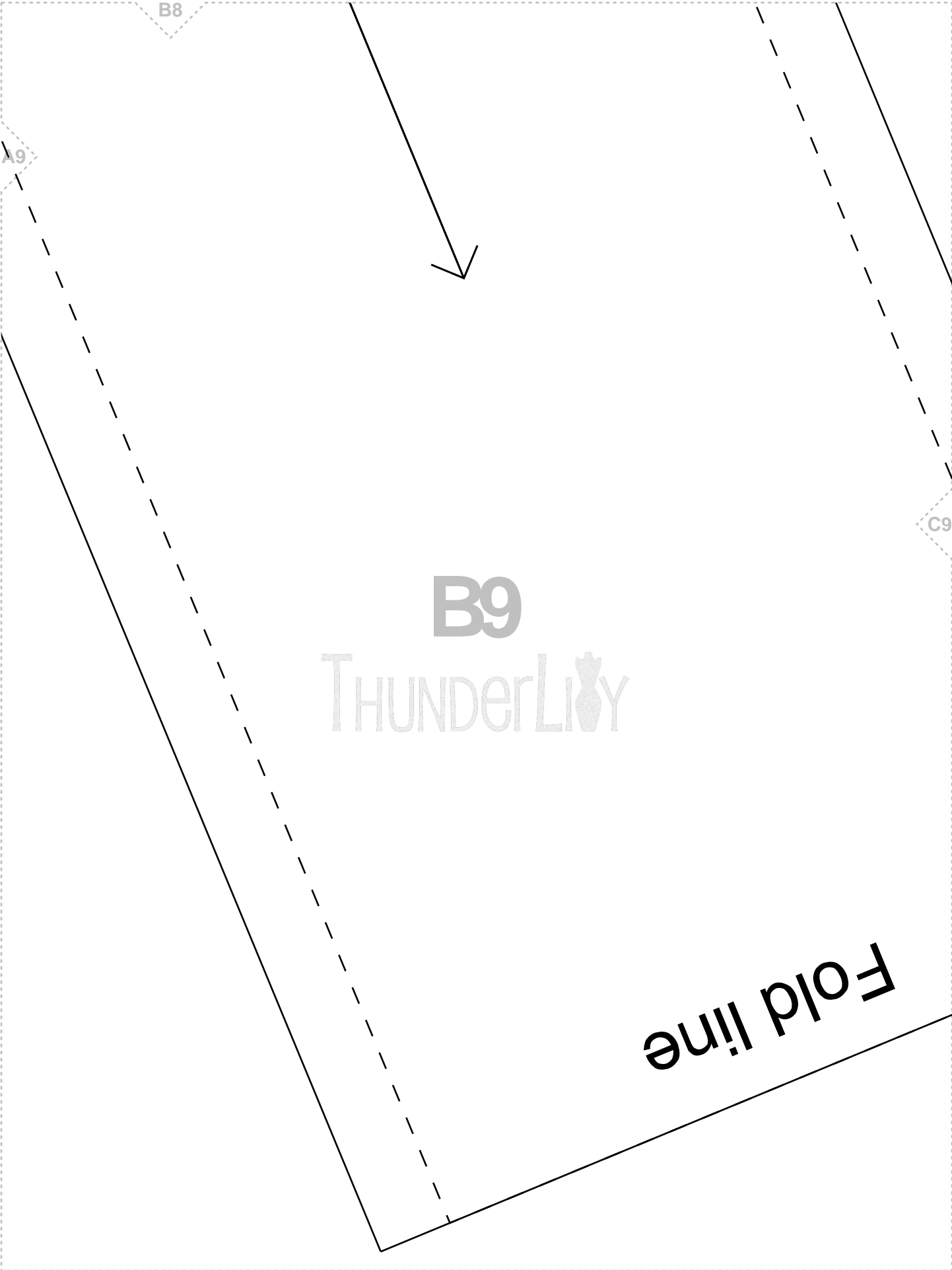
A9

C9

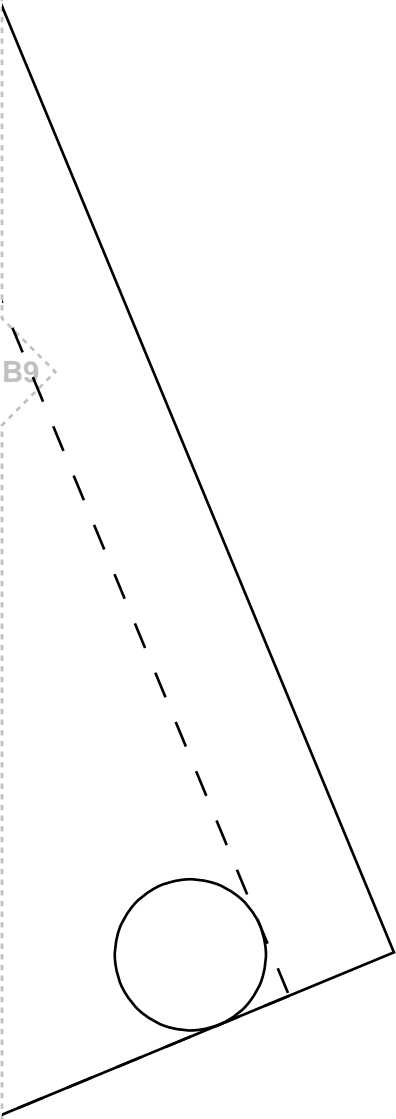
B9

THUNDERLION

Fold line



C8



B9

C9

THUNDERLION