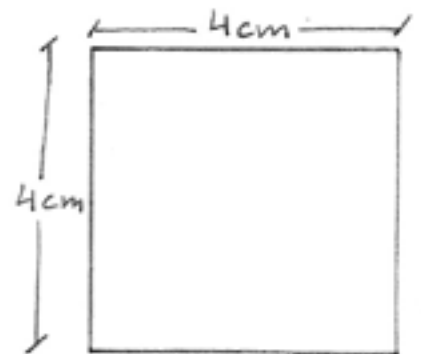
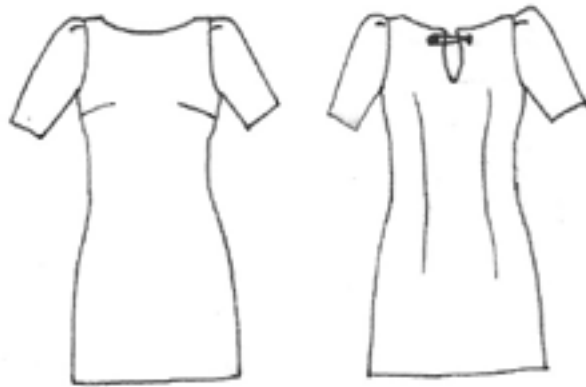


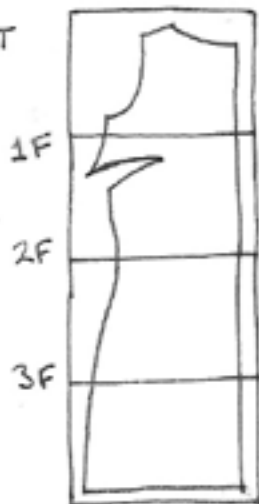
# 60's dress

for body dimensions:

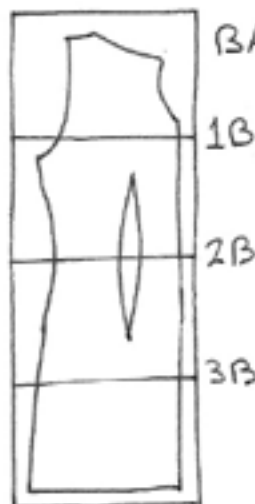
bust → 84cm  
waist → 70cm  
hips → 96cm



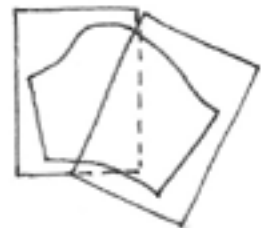
FRONT



BACK

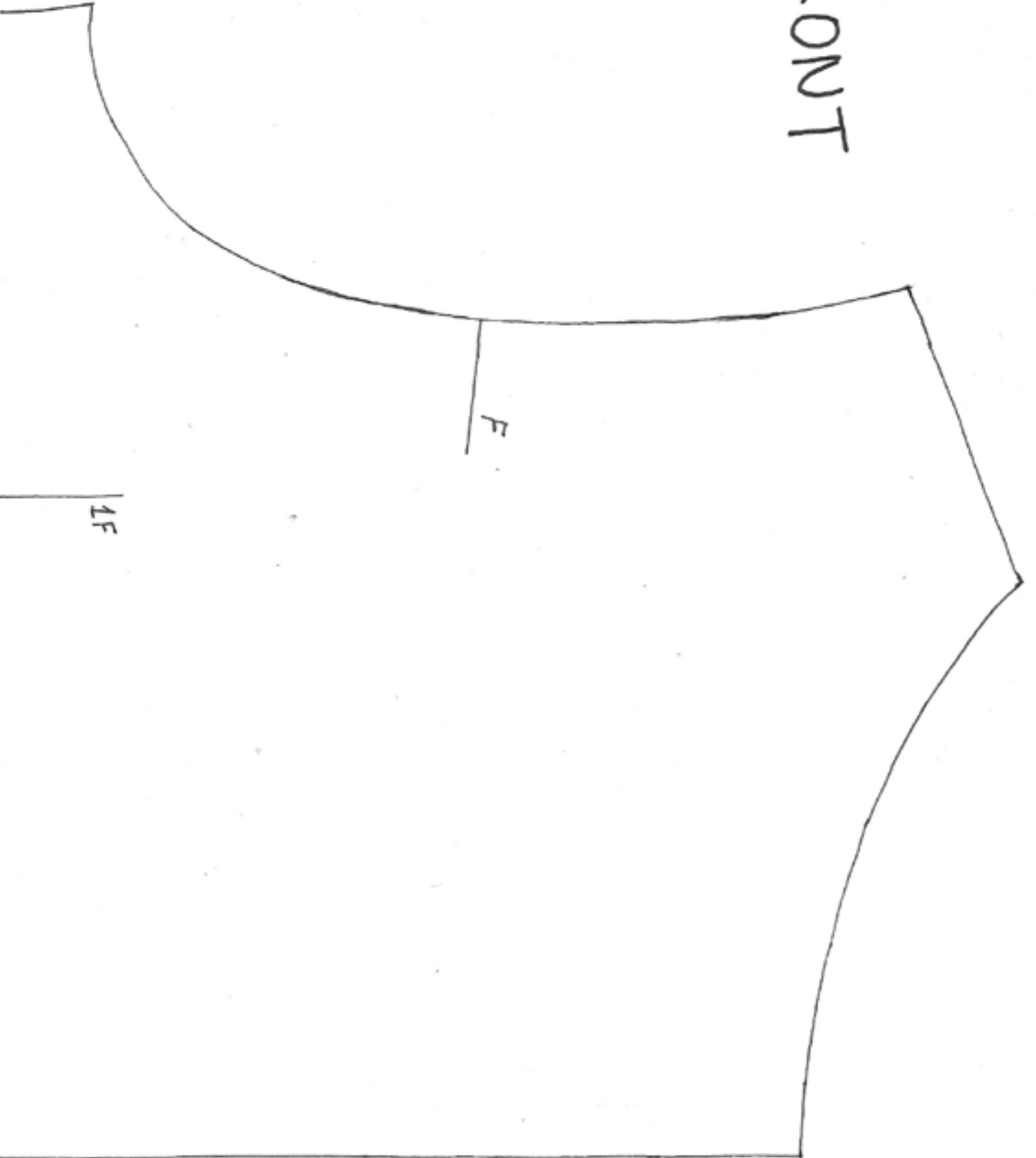


SLEEVE



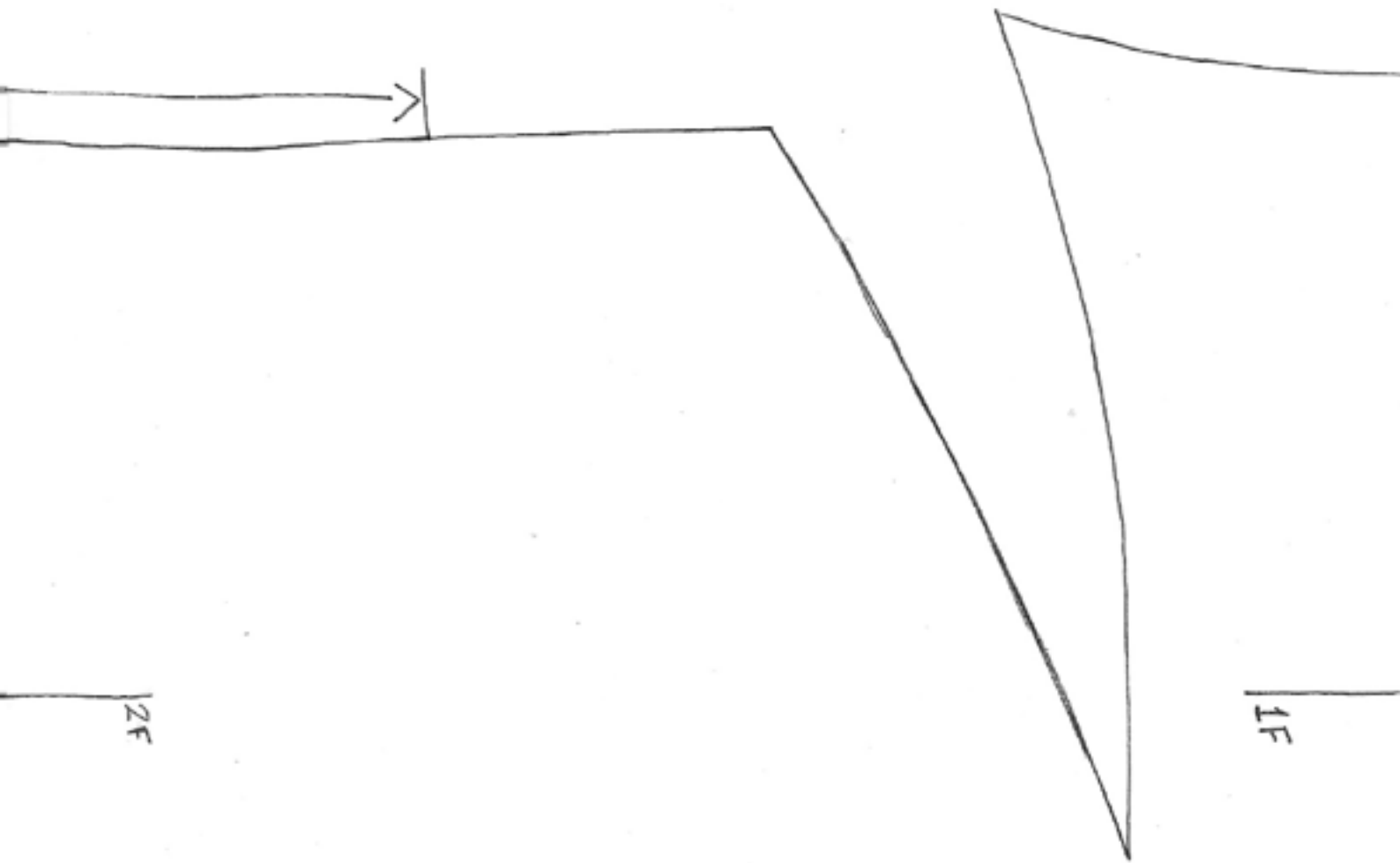
pattern by Alexandra P.

FRONT



F

1F



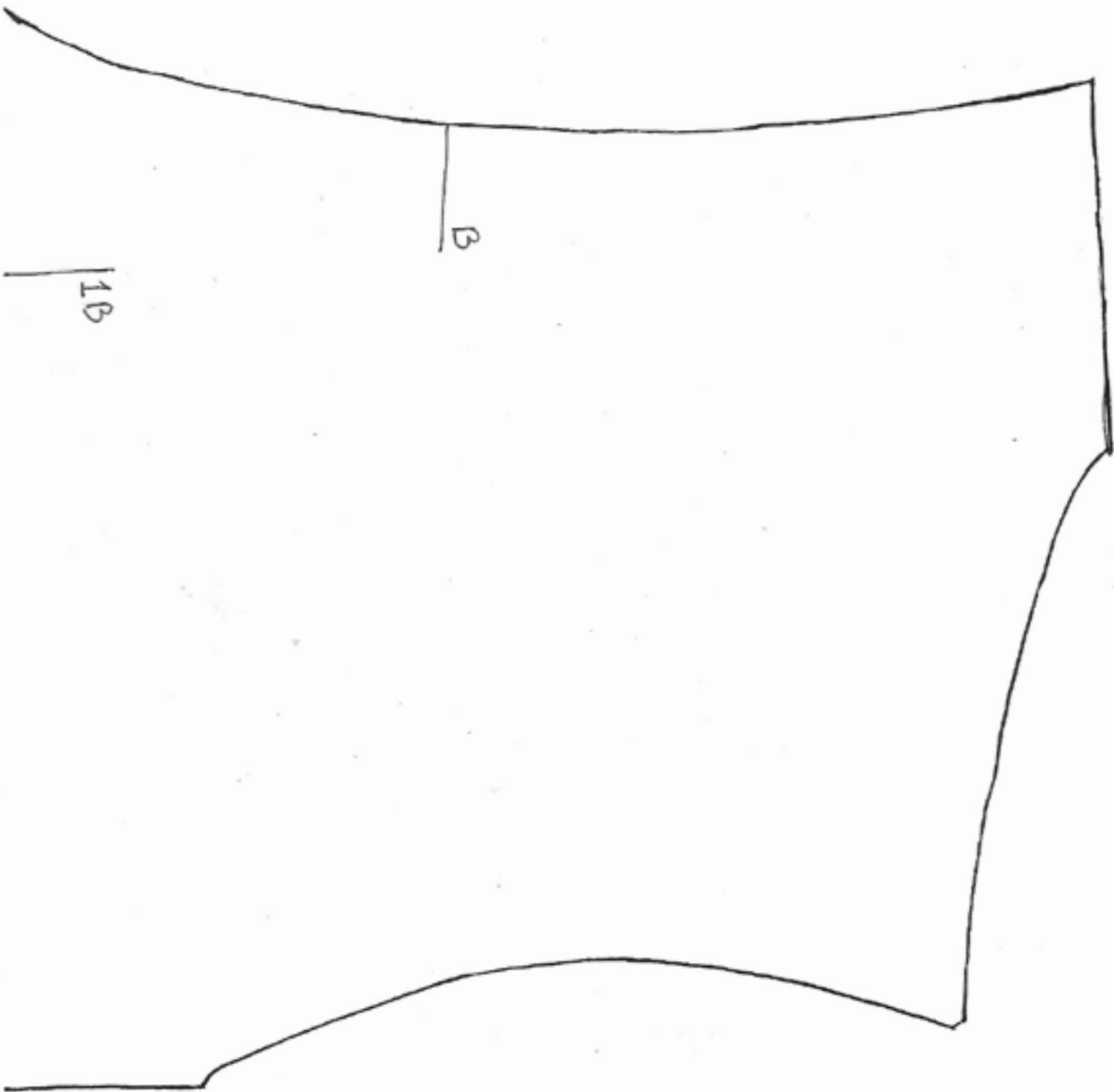
← ZIPPER (on Right OR Left side)

2F

3F

3F

BACK





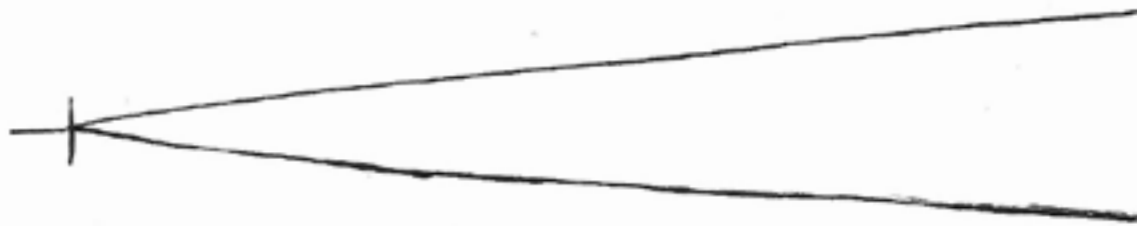
1B

2B





2B



3B





3B

SLEEVE

W

S

